

Converting Colors

YUV(166.5460, -21.4682,
25.8312)

Have a look what the booklet for
YUV(166.5460, -21.4682, 25.8312)
contains.

YUV(166.5460, -21.4682, 25.8312)	3
<i>Conversions</i>	4
<i>Details</i>	6
<i>Harmonies</i>	12
<i>Previews</i>	24
<i>Color Blindness Simulation</i>	28
<i>CSS Examples</i>	31

Color

**YUV(166.5460, -21.4682,
25.8312)**

Conversions

Conversions Part 1

Format	Color
Hex	C4A07B
RGB	196, 160, 123
RGB Percent	77%, 63%, 48%
CMY	0.2314, 0.3725, 0.5176
CMYK	0.00, 0.18, 0.37, 0.23
HSL	30°, 38%, 63%
HSV	30°, 37%, 77%
XYZ	38.9109, 38.3074, 24.0821
YIQ	166.5460, 33.3330, -3.8750

Conversions

Conversions Part 2

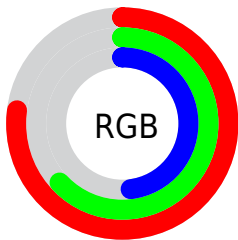
Format	Color
RYB	194, 196, 123
Decimal	12886139
CIELab	68.25, 8.13, 24.30
CIElCh	68, 25.626, 71.502
Yxy	38.3074, 0.3841, 0.3782
Android (android.graphics.Color)	4291076219 (0xFFC4A07B)
YUV	166.5460, -21.4682, 25.8312
Hunter-Lab	61.8930, 3.9067, 20.2558

Details

The YUV color **166.5460, -21.4682, 25.8312** is a light color, and the websafe version is hex **CC9966**. A complement of this color would be **152.4540, 21.4682, -25.8312**, and the grayscale version is **167.0000, 0.0000, 0.0000**.

A 20% lighter version of the original color is **222.2150, -22.7840, 27.8754**, and **114.5780, -20.0050, 23.1721** is the 20% darker color. If you saturate the color by 10%, you get **158.3960, -27.3102, 32.9787**, and if you desaturate by 10%, it is **174.6960, -15.6261, 18.6836**.

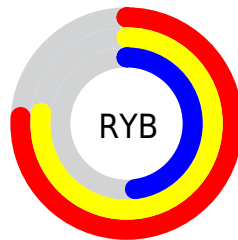
Distribution



Red (77%)

Green (63%)

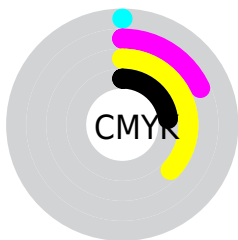
Blue (48%)



Red (76%)

Yellow (77%)

Blue (48%)

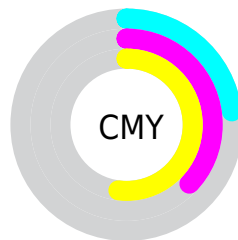


Cyan (0%)

Magenta (18%)

Yellow (37%)

Black (23%)



Cyan (23%)

Magenta (37%)

Yellow (52%)

Brightness & Saturation Gradients

These gradients show how the YUV color 166.5460, -21.4682, 25.8312 changes by changing the brightness by 10 percent. The first figure shows a shift by +10% for each color and the second figure -10%.

Similar to the brightness gradients but the following saturation gradients show a change of the YUV color 166.5460, -21.4682, 25.8312 by changing the saturation by 10% instead.

■ 166.5460,
-21.4682, 25.8312

■ 166.5460,
-21.4682, 25.8312

255.0000, 0.0000,
0.0000

■ 140.0620,
-20.7366, 24.5016

■ 222.2150,
-22.7840, 27.8754

■ 114.5780,
-20.0050, 23.1721

■ 242.0280,
-19.2408, 11.3764

■ 89.2080, -18.8365,
21.7426

■ 252.2640,
-10.4832, 2.3995

■ 65.7240, -18.1049,
20.4131

■ 42.5990, -18.5363,
18.7687

■ 23.1130, -11.3947,
14.8099

■ 0.2990, -0.1474,

0.6148

0.0000, 0.0000,
0.0000

166.5460,
-21.4682, 25.8312

166.5460,
-21.4682, 25.8312

158.3960,
-27.3102, 32.9787

174.6960,
-15.6261, 18.6836

150.9470,
-33.0049, 39.5115

182.1450, -9.9315,
12.1508

142.7970,
-38.8469, 46.6590

190.2950, -4.0894,
5.0033

134.7610,
-44.2522, 53.7066

198.3310, 1.3158,
-2.0443

127.1980,
-50.3836, 60.3394

205.8940, 7.4473,
-8.6770

■ 119.0480,
-56.2257, 67.4869

■ 214.0440, 13.2893,
-15.8246

■ 116.7170,
-57.5415, 69.5312

■ 221.5100, 16.5106,
-22.3723

■ 226.7930, 13.9061,
-27.0055

■ 232.6630, 11.0121,
-32.1535

Harmonies

Analogous

The Analogous color harmony consists of three colors that are next to each other on the color wheel.



168.2190, -15.3910, 36.6419



166.5460, -21.4682, 25.8312



164.4360, -21.4139, 8.3876

Triad

The Triadic color harmony groups three colors that are evenly spaced from another and form a triangle on the color wheel.



166.5460, -21.4682, 25.8312



155.5210, 9.6031, -46.9379



169.1920, 15.6813, 10.3556

Complementary

The Complementary color scheme is a pair of colors which are on the opposite of each other on the color wheel.



166.5460, -21.4682, 25.8312



152.4540, 21.4682, -25.8312

Split Complementary

Split-complementary colors differ from the complementary color scheme. The scheme consists of three colors, the original color and two neighbors of the complement color.



165.7590, 22.3038, -13.8206



166.5460, -21.4682, 25.8312



156.4310, 19.5075, -50.3670

Square

The Square scheme is like the rectangle color scheme, but the four colors are evenly spaced on the color wheel.



166.5460, -21.4682, 25.8312



158.1780, -3.5388, -31.7281



160.7730, 24.2689, -37.5119



170.0820, 5.8756, 28.8691

Rectangle

The Rectangle color scheme consists of four colors that form a rectangle on the color wheel.



166.5460, -21.4682, 25.8312



162.2710, -17.8816, -4.6227



160.7730, 24.2689, -37.5119



168.5330, 18.4712, 2.1636

Sweetspot

The Sweet Spot groups the original color and five complimentary colors.



166.5460, -21.4682, 25.8312



243.5900, -8.1789, 10.0066



149.0450, 5.4008, 41.1795



120.7790, -4.8210, 6.3328



0.0000, 0.0000, 0.0000



128.0000, 0.0000, 0.0000

Same Dimension

The Same Dimension uses a secret algorithm to generate beautiful new colors.



166.5460, -21.4682, 25.8312



208.4310, -33.7365, 40.8410



187.6780, -31.8863, 7.2984



92.9250, -2.9210, 3.5738



95.6860, -47.1732, 57.2804



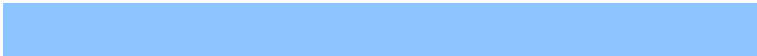
19.8460, -9.7841, 11.5361

Inverse Universe

The Inverse Universe completely reimagines the original color for something new.



152.4540, 21.4682, -25.8312



186.5690, 33.7365, -40.8410



131.3220, 31.8863, -7.2984



91.0750, 2.9210, -3.5738



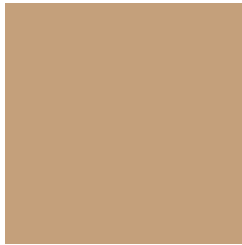
64.7270, 47.4626, -56.7656



13.1540, 9.7841, -11.5361

Previews

White Background



This preview shows how the YUV color 166.5460, -21.4682, 25.8312 looks on a white background.

Color Contrast Check

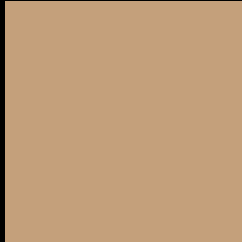
Large Text (above 18pt) WCAG AA × Fail

Any Text WCAG AA × Fail

Large Text (above 18pt) WCAG AAA × Fail

Any Text WCAG AAA × Fail

Black Background



This preview shows how the YUV color 166.5460, -21.4682, 25.8312 looks on a black background.

Color Contrast Check

Large Text (above 18pt) WCAG AA ✓ Pass

Any Text WCAG AA ✓ Pass

Large Text (above 18pt) WCAG AAA ✓ Pass

Any Text WCAG AAA ✓ Pass

If you want to check with other color combinations, try the [Color Contrast Checker](#).

YUV 166.5460, -21.4682, 25.8312 Background



This preview shows how black text looks on a background with the YUV color 166.5460, -21.4682, 25.8312.



This preview shows how white text looks on a background with the YUV color 166.5460, -21.4682, 25.8312.

25.8312.

Color Blindness Simulation

Color vision deficiency is a very complex topic, and I could not describe the different causes any better than Wikipedia does, so if you want to learn more, you should check out their [article about color blindness](#).

Dichromacy



Original Color

166.5460, -21.4682, 25.8312

Protanopia

165.0280, -19.2408, 11.3764

Deuteranopia

166.8450, -21.6156, 26.4459



Tritanopia

169.1220, -1.5391, 27.0800

Trichromacy



Original Color

166.5460, -21.4682, 25.8312

Protanomaly

165.8330, -20.1307, 16.8095

Deuteranomaly

166.8450, -21.6156, 26.4459

Tritanomaly

168.1730, -8.9593, 27.0353

Monochromacy



Original Color

166.5460, -21.4682, 25.8312

Achromatopsia

167.0000, 0.0000, 0.0000

Achromatomaly

166.7040, -7.7421, 9.9066

CSS Examples

Text

The CSS property to change the color of the text to YUV 166.5460, -21.4682, 25.8312 is called "color". The color property can be set on classes, ids or directly on the HTML element.

This example shows how text in the color `rgb(196, 160, 123)` looks like.

```
.text, #text, p{  
    color:rgb(196, 160, 123)  
}
```

If you want to add a text shadow in that color use the text-shadow property, you can generate a text shadow directly with our [CSS Text Shadow Generator](#).

Here you see how black text with a 4 pixel rgb(196, 160, 123) colored shadow looks like.

```
.shadow{ text-shadow: 4px 4px 2px rgb(196, 160, 123) }
```

Border

The CSS property to change the border of an element to YUV 166.5460, -21.4682, 25.8312 is called "border".

The border property can be set on classes, ids or directly on the HTML element.

This example shows the color as border, it can be applied via the CSS property "border" or "border-color".

```
.border, #border, table{ border:4px solid rgb(196, 160, 123) }
```


If only the border color should be changed use the property `border-color`.

```
.border{ border-color:rgb(196, 160, 123) }
```

If you want to add a box shadow in that color use:

Here you see how a box with a 4 pixel `rgb(196, 160, 123)` colored shadow looks like.

```
.boxshadow{ -moz-box-shadow:4px 4px 4px  
4px rgb(196, 160, 123); -webkit-box-  
shadow:4px 4px 4px 4px rgb(196, 160, 123);  
box-shadow:4px 4px 4px 4px rgb(196, 160,  
123) }
```

Background

The CSS property to change the background color of an element to YUV 166.5460, -21.4682, 25.8312 is called "background". The background property can be set on classes, ids or directly on the HTML element.

```
.background, #background, body{  
background: rgb(196, 160, 123) }
```

If only the background color should be changed can be used:

```
.background{ background-color: rgb(196,  
160, 123) }
```

This example shows the color as background, it is applied via the CSS property "background".

To optimize and compress your CSS code, you can use our [online CSS compressor and optimizer](#) based on csstidy. If you want to create a linear or radial gradient as background or border, check our [CSS Gradient Generator](#).

Hey! You found this booklet interesting? Support Converting Colors with the new Membership Option!

The pro membership hides all ads, plus gives you double the colors in the color bucket, and more awesome pro features!

[Learn more, Memberships starting at \\$2.50/m!](#)

**Follow me
on Twitter!**

@ConvertingColor