

# Converting Colors

YUV(166.8130, -12.7258,  
68.5700)

Have a look what the booklet for  
YUV(166.8130, -12.7258, 68.5700)  
contains.

<b>YUV(166.8130, -12.7258, 68.5700)</b> .....	3
<b><i>Conversions</i></b> .....	4
<b><i>Details</i></b> .....	6
<b><i>Harmonies</i></b> .....	12
<b><i>Previews</i></b> .....	24
<b><i>Color Blindness Simulation</i></b> .....	28
<b><i>CSS Examples</i></b> .....	31

# Color

**YUV(166.8130, -12.7258,  
68.5700)**

# Conversions

## Conversions Part 1

Format	Color
Hex	F5848D
RGB	245, 132, 141
RGB Percent	96%, 52%, 55%
CMY	0.0392, 0.4824, 0.4471
CMYK	0.00, 0.46, 0.42, 0.04
HSL	355°, 85%, 74%
HSV	355°, 46%, 96%
XYZ	50.7152, 37.8381, 29.8298
YIQ	166.8130, 64.4590, 26.7550

# Conversions

## Conversions Part 2

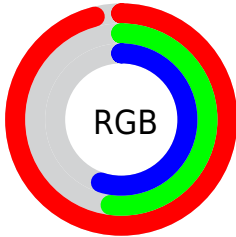
<b>Format</b>	<b>Color</b>
R <sub>Y</sub> B	245, 132, 141
Decimal	16090253
CIE Lab	67.90, 43.90, 14.76
CIE LCh	68, 46.315, 18.586
Yxy	37.8381, 0.4284, 0.3196
Android (android.graphics.Color)	4294280333 (0xFFFF5848D)
YUV	166.8130, -12.7258, 68.5700
Hunter-Lab	61.5127, 39.5202, 14.3069

# Details

The YUV color **166.8130, -12.7258, 68.5700** is a light color, and the websafe version is hex **FF9999**. A complement of this color would be **210.1870, 12.7258, -68.5700**, and the grayscale version is **167.0000, 0.0000, 0.0000**.

A 20% lighter version of the original color is **208.2440, -6.5293, 41.0050**, and **112.0620, -10.3836, 63.9666** is the 20% darker color. If you saturate the color by 10%, you get **150.1030, -15.8268, 83.2247**, and if you desaturate by 10%, it is **184.1100, -9.9142, 53.4005**.

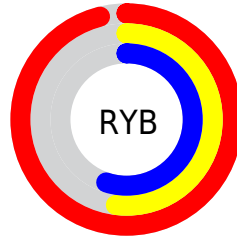
# Distribution



Red (96%)

Green (52%)

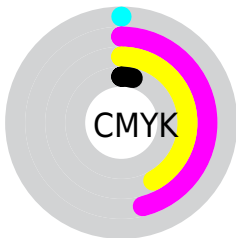
Blue (55%)



Red (96%)

Yellow (52%)

Blue (55%)

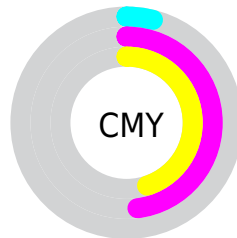


Cyan (0%)

Magenta (46%)

Yellow (42%)

Black (4%)



Cyan (4%)

Magenta (48%)

Yellow (45%)

# Brightness & Saturation Gradients

These gradients show how the YUV color 166.8130, -12.7258, 68.5700 changes by changing the brightness by 10 percent. The first figure shows a shift by +10% for each color and the second figure -10%.

Similar to the brightness gradients but the following saturation gradients show a change of the YUV color 166.8130, -12.7258, 68.5700 by changing the saturation by 10% instead.



166.8130,  
-12.7258, 68.5700

166.8130,  
-12.7258, 68.5700

255.0000, 0.0000,  
0.0000

139.1440,  
-11.4100, 66.5257

208.2440, -6.5293,  
41.0050

112.0620,  
-10.3836, 63.9666

227.7580, -2.8387,  
23.8912

85.5070, -8.6310,  
61.8224

248.0870, 1.4361,  
6.0627

57.8920, -5.8628,  
60.6077

32.4510, -3.6733,  
58.3635

21.5280, -10.6133,  
44.2639

13.9820, -5.9071,

28.0798

■ 0.0000, 0.0000,  
0.0000

■ 166.8130,  
-12.7258, 68.5700

■ 166.8130,  
-12.7258, 68.5700

■ 150.1030,  
-15.8268, 83.2247

■ 184.1100, -9.9142,  
53.4005

■ 132.9200,  
-18.2016, 98.2942

■ 200.7060, -7.2501,  
38.8458

■ 116.2100,  
-21.3025, 112.9488

■ 218.0030, -4.4385,  
23.6764

■ 99.0270, -23.6773,  
128.0183

■ 234.5990, -1.7743,  
9.1217

■ 82.3170, -26.7783,  
142.6730

■ 251.8960, 1.0373,  
-6.0478

■ 75.5350, -27.3788,  
148.6208

■ 252.0100, 1.4741,  
-6.1478

# Harmonies

## Analogous

The Analogous color harmony consists of three colors that are next to each other on the color wheel.



169.1980, 6.8044, 57.7084



166.8130, -12.7258, 68.5700



164.8770, -30.0124, 59.7439

# Triad

The Triadic color harmony groups three colors that are evenly spaced from another and form a triangle on the color wheel.



166.8130, -12.7258, 68.5700



153.5420, -22.4522, -32.0473



145.2460, 50.1647, -83.5307

# Complementary

The Complementary color scheme is a pair of colors which are on the opposite of each other on the color wheel.



166.8130, -12.7258, 68.5700



210.1870, 12.7258, -68.5700

# Split Complementary

Split-complementary colors differ from the complementary color scheme. The scheme consists of three colors, the original color and two neighbors of the complement color.



133.2990, 46.1946, -116.9032



166.8130, -12.7258, 68.5700



140.1070, 3.8912, -81.6548

# Square

The Square scheme is like the rectangle color scheme, but the four colors are evenly spaced on the color wheel.



166.8130, -12.7258, 68.5700



159.2880, -37.1170, 5.0094



131.5430, 29.3123, -115.3632



165.4930, 39.1970, -18.8494



# Rectangle

The Rectangle color scheme consists of four colors that form a rectangle on the color wheel.



166.8130, -12.7258, 68.5700



163.7260, -37.8259, 45.8443



131.5430, 29.3123, -115.3632



132.1880, 54.6303, -115.9289

# Sweetspot

The Sweet Spot groups the original color and five complimentary colors.



166.8130, -12.7258, 68.5700



230.1060, -3.9963, 21.8320



175.9780, 34.0278, 52.6393



112.8060, -2.3694, 13.3251



0.0000, 0.0000, 0.0000



128.0000, 0.0000, 0.0000



# Same Dimension

The Same Dimension uses a secret algorithm to generate beautiful new colors.



166.8130, -12.7258, 68.5700



158.1140, -15.8322, 84.9690



193.3760, -30.2584, 45.2742



113.7020, -1.3321, 7.2773



57.3240, -20.8657, 112.8489



18.2110, -6.5130, 35.7720



# Inverse Universe

The Inverse Universe completely reimagines the original color for something new.



166.8130, -12.7258, 68.5700



158.1140, -15.8322, 84.9690



183.6240, 30.2584, -45.2742



113.7020, -1.3321, 7.2773



57.3240, -20.8657, 112.8489



18.2110, -6.5130, 35.7720



# Previews

## White Background



This preview shows how the YUV color 166.8130, -12.7258, 68.5700 looks on a white background.

## Color Contrast Check

Large Text (above 18pt) WCAG AA × Fail

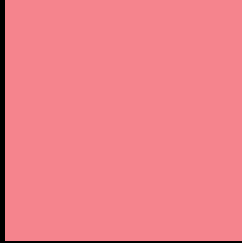
Any Text WCAG AA × Fail

Large Text (above 18pt) WCAG AAA × Fail

Any Text WCAG AAA × Fail



# Black Background



This preview shows how the YUV color 166.8130, -12.7258, 68.5700 looks on a black background.

## Color Contrast Check

Large Text (above 18pt) WCAG AA ✓ Pass

Any Text WCAG AA ✓ Pass

Large Text (above 18pt) WCAG AAA ✓ Pass

Any Text WCAG AAA ✓ Pass

If you want to check with other color combinations, try the [Color Contrast Checker](#).

# YUV 166.8130, -12.7258, 68.5700

## Background



This preview shows how black text looks on a background with the YUV color 166.8130, -12.7258, 68.5700.



This preview shows how white text looks on a background with the YUV color 166.8130, -12.7258, 68.5700.



# Color Blindness Simulation

Color vision deficiency is a very complex topic, and I could not describe the different causes any better than Wikipedia does, so if you want to learn more, you should check out their [article about color blindness](#).

## Dichromacy



### Original Color

166.8130, -12.7258, 68.5700

### Protanopia

165.9960, -3.9420, 4.3885

### Deuteranopia

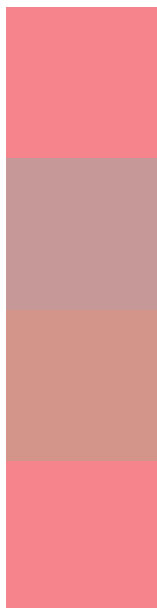
166.2450, -14.9108, 22.5871



## Tritanopia

166.8130, -12.7258, 68.5700

# Trichromacy



## Original Color

166.8130, -12.7258, 68.5700

## Protanomaly

166.3410, -7.0701, 27.7649

## Deuteranomaly

166.2840, -13.9440, 39.2159

## Tritanomaly

166.8130, -12.7258, 68.5700

# Monochromacy



## Original Color

166.8130, -12.7258, 68.5700

## Achromatopsia

167.0000, 0.0000, 0.0000

## Achromatomaly

166.7150, -4.2965, 24.8059

# CSS Examples

## Text

The CSS property to change the color of the text to YUV 166.8130, -12.7258, 68.5700 is called "color". The color property can be set on classes, ids or directly on the HTML element.

This example shows how text in the color `rgb(245, 132, 141)` looks like.

```
.text, #text, p{  
    color:rgb(245, 132, 141)  
}
```

If you want to add a text shadow in that color use the text-shadow property, you can generate a text shadow directly with our [CSS Text Shadow Generator](#).

Here you see how black text with a 4 pixel rgb(245, 132, 141) colored shadow looks like.

```
.shadow{ text-shadow: 4px 4px 2px rgb(245, 132, 141) }
```

## Border

The CSS property to change the border of an element to YUV 166.8130, -12.7258, 68.5700 is called "border".

The border property can be set on classes, ids or directly on the HTML element.

This example shows the color as border, it can be applied via the CSS property "border" or "border-color".

```
.border, #border, table{ border:4px solid rgb(245, 132, 141) }
```



If only the border color should be changed use the property `border-color`.

```
.border{ border-color:rgb(245, 132, 141) }
```

If you want to add a box shadow in that color use:

Here you see how a box with a 4 pixel `rgb(245, 132, 141)` colored shadow looks like.

```
.boxshadow{ -moz-box-shadow:4px 4px 4px  
4px rgb(245, 132, 141); -webkit-box-  
shadow:4px 4px 4px 4px rgb(245, 132, 141);  
box-shadow:4px 4px 4px 4px rgb(245, 132,  
141) }
```

# Background

The CSS property to change the background color of an element to YUV 166.8130, -12.7258, 68.5700 is called "background". The background property can be set on classes, ids or directly on the HTML element.

```
.background, #background, body{  
background: rgb(245, 132, 141) }
```

If only the background color should be changed can be used:

```
.background{ background-color: rgb(245,  
132, 141) }
```

This example shows the color as background, it is applied via the CSS property "background".

To optimize and compress your CSS code, you can use our [online CSS compressor and optimizer](#) based on csstidy. If you want to create a linear or radial gradient as background or border, check our [CSS Gradient Generator](#).

Hey! You found this booklet interesting? Support Converting Colors with the new Membership Option!

The pro membership hides all ads, plus gives you double the colors in the color bucket, and more awesome pro features!

**[Learn more, Memberships starting at \\$2.50/m!](#)**

**Follow me  
on Twitter!**

@ConvertingColor