

Converting Colors

YUV(166.9070, -8.8282,
31.6536)

Have a look what the booklet for
YUV(166.9070, -8.8282, 31.6536)
contains.

YUV(166.9070, -8.8282, 31.6536)	3
<i>Conversions</i>	4
<i>Details</i>	6
<i>Harmonies</i>	12
<i>Previews</i>	24
<i>Color Blindness Simulation</i>	28
<i>CSS Examples</i>	31

Color

**YUV(166.9070, -8.8282,
31.6536)**

Conversions

Conversions Part 1

Format	Color
Hex	CB9895
RGB	203, 152, 149
RGB Percent	80%, 60%, 58%
CMY	0.2039, 0.4039, 0.4157
CMYK	0.00, 0.25, 0.27, 0.20
HSL	3°, 34%, 69%
HSV	3°, 27%, 80%
XYZ	41.2817, 37.3229, 33.4620
YIQ	166.9070, 31.3590, 9.8790

Conversions

Conversions Part 2

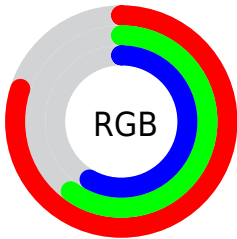
Format	Color
R _Y B	203, 152, 149
Decimal	13342869
CIE Lab	67.52, 18.66, 9.03
CIE LCh	68, 20.731, 25.824
Yxy	37.3229, 0.3684, 0.3330
Android (android.graphics.Color)	4291532949 (0xFFCB9895)
YUV	166.9070, -8.8282, 31.6536
Hunter-Lab	61.0925, 13.7049, 10.2900

Details

The YUV color $166.9070, -8.8282, 31.6536$ is a light color, and the websafe version is hex $CC9999$. A complement of this color would be $185.0930, 8.8282, -31.6536$, and the grayscale version is $167.0000, 0.0000, 0.0000$.

A 20% lighter version of the original color is $220.3090, -8.5333, 30.4240$, and $114.7110, -8.2385, 29.1945$ is the 20% darker color. If you saturate the color by 10%, you get $153.4740, -12.0657, 43.4343$, and if you desaturate by 10%, it is $180.3400, -5.5906, 19.8728$.

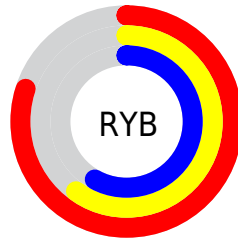
Distribution



Red (80%)

Green (60%)

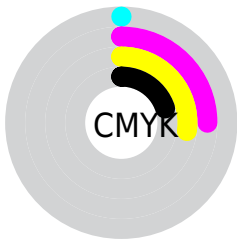
Blue (58%)



Red (80%)

Yellow (60%)

Blue (58%)

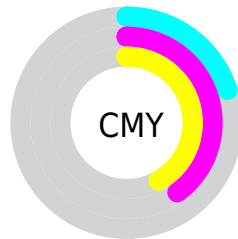


Cyan (0%)

Magenta (25%)

Yellow (27%)

Black (20%)



Cyan (20%)

Magenta (40%)

Yellow (42%)

Brightness & Saturation Gradients

These gradients show how the YUV color 166.9070, -8.8282, 31.6536 changes by changing the brightness by 10 percent. The first figure shows a shift by +10% for each color and the second figure -10%.

Similar to the brightness gradients but the following saturation gradients show a change of the YUV color 166.9070, -8.8282, 31.6536 by changing the saturation by 10% instead.

■ 166.9070, -8.8282,
31.6536

■ 166.9070, -8.8282,
31.6536

255.0000, 0.0000,
0.0000

■ 140.3090, -8.5333,
30.4240

■ 220.3090, -8.5333,
30.4240

■ 114.7110, -8.2385,
29.1945

■ 240.5240, -4.6953,
12.6955

■ 89.9280, -7.3595,
27.2501

■ 65.4440, -6.6279,
25.9206

■ 42.6610, -5.7489,
23.9763

■ 20.6070, -7.2013,
23.1467

■ 5.6810, -2.8007,

11.6808

■ 0.0000, 0.0000,
0.0000

■ 166.9070, -8.8282,
31.6536

■ 166.9070, -8.8282,
31.6536

■ 153.4740,
-12.0657, 43.4343

■ 180.3400, -5.5906,
19.8728

■ 139.9270,
-15.7400, 55.3150

■ 193.8870, -1.9163,
7.9921

■ 125.9070,
-18.6882, 67.6106

■ 207.9070, 1.0318,
-4.3034

■ 112.4740,
-21.9257, 79.3913

■ 221.3400, 4.2694,
-16.0842

■ 99.0410, -25.1632,
91.1720

■ 234.8870, 7.9437,
-27.9649

■ 85.4940, -28.8375,
103.0528

■ 239.4520, 7.6652,
-31.9684

■ 72.0610, -32.0751,
114.8335

■ 67.1540, -33.1069,
119.1369

Harmonies

Analogous

The Analogous color harmony consists of three colors that are next to each other on the color wheel.



167.5890, 0.2026, 28.4244



166.9070, -8.8282, 31.6536



165.4520, -15.5058, 26.7906

Triad

The Triadic color harmony groups three colors that are evenly spaced from another and form a triangle on the color wheel.



166.9070, -8.8282, 31.6536



159.7130, -8.2395, -17.2883



162.5040, 18.9785, -20.6130

Complementary

The Complementary color scheme is a pair of colors which are on the opposite of each other on the color wheel.



166.9070, -8.8282, 31.6536



185.0930, 8.8282, -31.6536

Split Complementary

Split-complementary colors differ from the complementary color scheme. The scheme consists of three colors, the original color and two neighbors of the complement color.



158.7750, 17.8589, -34.8827



166.9070, -8.8282, 31.6536



157.2580, 1.8448, -31.7983

Square

The Square scheme is like the rectangle color scheme, but the four colors are evenly spaced on the color wheel.



166.9070, -8.8282, 31.6536



161.6890, -15.1297, -0.6043



156.7330, 11.4706, -39.2308



166.1150, 15.7193, -1.8549

Rectangle

The Rectangle color scheme consists of four colors that form a rectangle on the color wheel.



166.9070, -8.8282, 31.6536



164.5390, -17.5207, 19.6983



156.7330, 11.4706, -39.2308



161.1720, 19.1422, -26.4608

Sweetspot

The Sweet Spot groups the original color and five complimentary colors.



166.9070, -8.8282, 31.6536



241.5670, -3.2375, 11.7807



170.9600, 14.3167, 28.0991



118.8870, -1.9163, 7.9921



0.0000, 0.0000, 0.0000



128.0000, 0.0000, 0.0000

Same Dimension

The Same Dimension uses a secret algorithm to generate beautiful new colors.



166.9070, -8.8282, 31.6536



200.4530, -13.5343, 47.8377



182.7560, -16.6417, 17.7540



94.9900, -1.4741, 6.1478



54.9170, -27.0741, 97.4198



12.5360, -6.1802, 22.3319

Inverse Universe

The Inverse Universe completely reimagines the original color for something new.



185.0930, 8.8282, -31.6536



227.5470, 13.5343, -47.8377



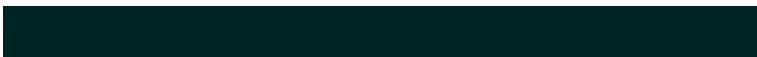
169.2440, 16.6417, -17.7540



98.4230, 1.7635, -5.6330



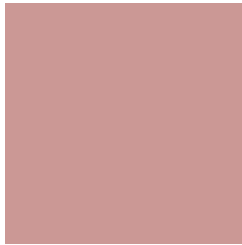
111.0830, 27.0741, -97.4198



25.4640, 6.1802, -22.3319

Previews

White Background



This preview shows how the YUV color 166.9070, -8.8282, 31.6536 looks on a white background.

Color Contrast Check

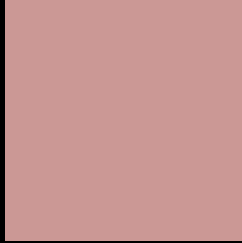
Large Text (above 18pt) WCAG AA × Fail

Any Text WCAG AA × Fail

Large Text (above 18pt) WCAG AAA × Fail

Any Text WCAG AAA × Fail

Black Background



This preview shows how the YUV color 166.9070, -8.8282, 31.6536 looks on a black background.

Color Contrast Check

Large Text (above 18pt) WCAG AA ✓ Pass

Any Text WCAG AA ✓ Pass

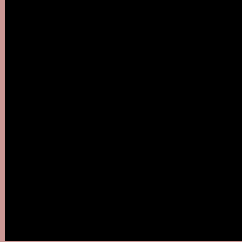
Large Text (above 18pt) WCAG AAA ✓ Pass

Any Text WCAG AAA ✓ Pass

If you want to check with other color combinations, try the [Color Contrast Checker](#).

YUV 166.9070, -8.8282, 31.6536

Background



This preview shows how black text looks on a background with the YUV color 166.9070, -8.8282, 31.6536.



This preview shows how white text looks on a background with the YUV color 166.9070, -8.8282,

Color Blindness Simulation

Color vision deficiency is a very complex topic, and I could not describe the different causes any better than Wikipedia does, so if you want to learn more, you should check out their [article about color blindness](#).

Dichromacy



Original Color

166.9070, -8.8282, 31.6536

Protanopia

164.7680, -4.8156, 4.5885

Deuteranopia

166.1180, -8.9322, 18.3135



Tritanopia

167.5140, -2.7184, 31.9982

Trichromacy



Original Color

166.9070, -8.8282, 31.6536

Protanomaly

165.7800, -6.3005, 14.2249

Deuteranomaly

166.1510, -8.9484, 23.5466

Tritanomaly

167.5310, -5.1918, 31.9833

Monochromacy



Original Color

166.9070, -8.8282, 31.6536

Achromatopsia

167.0000, 0.0000, 0.0000

Achromatomaly

167.1540, -3.5269, 11.2659

CSS Examples

Text

The CSS property to change the color of the text to YUV 166.9070, -8.8282, 31.6536 is called "color". The color property can be set on classes, ids or directly on the HTML element.

This example shows how text in the color `rgb(203, 152, 149)` looks like.

```
.text, #text, p{  
    color:rgb(203, 152, 149)  
}
```

If you want to add a text shadow in that color use the text-shadow property, you can generate a text shadow directly with our [CSS Text Shadow Generator](#).

Here you see how black text with a 4 pixel rgb(203, 152, 149) colored shadow looks like.

```
.shadow{ text-shadow: 4px 4px 2px rgb(203, 152, 149) }
```

Border

The CSS property to change the border of an element to YUV 166.9070, -8.8282, 31.6536 is called "border". The border property can be set on classes, ids or directly on the HTML element.

This example shows the color as border, it can be applied via the CSS property "border" or "border-color".

```
.border, #border, table{ border:4px solid rgb(203, 152, 149) }
```


If only the border color should be changed use the property `border-color`.

```
.border{ border-color:rgb(203, 152, 149) }
```

If you want to add a box shadow in that color use:

Here you see how a box with a 4 pixel `rgb(203, 152, 149)` colored shadow looks like.

```
.boxshadow{ -moz-box-shadow:4px 4px 4px  
4px rgb(203, 152, 149); -webkit-box-  
shadow:4px 4px 4px 4px rgb(203, 152, 149);  
box-shadow:4px 4px 4px 4px rgb(203, 152,  
149) }
```

Background

The CSS property to change the background color of an element to YUV 166.9070, -8.8282, 31.6536 is called "background". The background property can be set on classes, ids or directly on the HTML element.

```
.background, #background, body{  
background: rgb(203, 152, 149) }
```

If only the background color should be changed can be used:

```
.background{ background-color: rgb(203,  
152, 149) }
```

This example shows the color as background, it is applied via the CSS property "background".

To optimize and compress your CSS code, you can use our [online CSS compressor and optimizer](#) based on csstidy. If you want to create a linear or radial gradient as background or border, check our [CSS Gradient Generator](#).

Hey! You found this booklet interesting? Support Converting Colors with the new Membership Option!

The pro membership hides all ads, plus gives you double the colors in the color bucket, and more awesome pro features!

[Learn more, Memberships starting at \\$2.50/m!](#)

**Follow me
on Twitter!**

@ConvertingColor