

Converting Colors

YUV(167.1660, -5.0118,
20.9024)

Have a look what the booklet for
YUV(167.1660, -5.0118, 20.9024)
contains.

YUV(167.1660, -5.0118, 20.9024)	3
<i>Conversions</i>	4
<i>Details</i>	6
<i>Harmonies</i>	12
<i>Previews</i>	24
<i>Color Blindness Simulation</i>	28
<i>CSS Examples</i>	31

Color

**YUV(167.1660, -5.0118,
20.9024)**

Conversions

Conversions Part 1

Format	Color
Hex	BF9D9D
RGB	191, 157, 157
RGB Percent	75%, 62%, 62%
CMY	0.2510, 0.3843, 0.3843
CMYK	0.00, 0.18, 0.18, 0.25
HSL	0°, 21%, 68%
HSV	0°, 18%, 75%
XYZ	39.6286, 37.6246, 37.0719
YIQ	167.1660, 20.2640, 7.2080

Conversions

Conversions Part 2

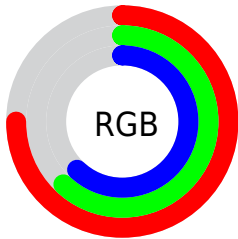
Format	Color
R _Y B	191, 157, 157
Decimal	12557725
CIE Lab	67.74, 12.57, 4.73
CIE LCh	68, 13.430, 20.617
Yxy	37.6246, 0.3466, 0.3291
Android (android.graphics.Color)	4290747805 (0xFFBF9D9D)
YUV	167.1660, -5.0118, 20.9024
Hunter-Lab	61.3389, 7.9786, 7.1037

Details

The YUV color $167.1660, -5.0118, 20.9024$ is a light color, and the websafe version is hex $CC9999$. A complement of this color would be $180.8340, 5.0118, -20.9024$, and the grayscale version is $167.0000, 0.0000, 0.0000$.

A 20% lighter version of the original color is $222.7640, -5.3067, 22.1320$, and $115.2690, -4.5696, 19.0581$ is the 20% darker color. If you saturate the color by 10%, you get $153.8470, -7.8126, 32.5832$, and if you desaturate by 10%, it is $180.4850, -2.2111, 9.2217$.

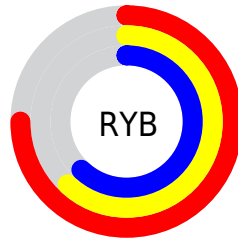
Distribution



Red (75%)

Green (62%)

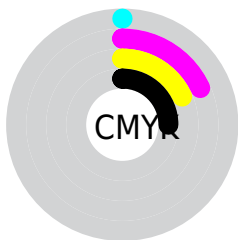
Blue (62%)



Red (75%)

Yellow (62%)

Blue (62%)

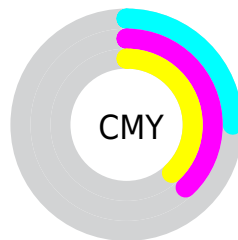


Cyan (0%)

Magenta (18%)

Yellow (18%)

Black (25%)



Cyan (25%)

Magenta (38%)

Yellow (38%)

Brightness & Saturation Gradients

These gradients show how the YUV color 167.1660, -5.0118, 20.9024 changes by changing the brightness by 10 percent. The first figure shows a shift by +10% for each color and the second figure -10%.

Similar to the brightness gradients but the following saturation gradients show a change of the YUV color 167.1660, -5.0118, 20.9024 by changing the saturation by 10% instead.

■ 167.1660, -5.0118,
20.9024

■ 167.1660, -5.0118,
20.9024

■ 255.0000, 0.0000,
0.0000

■ 140.8670, -4.8644,
20.2876

■ 222.7640, -5.3067,
22.1320

■ 115.2690, -4.5696,
19.0581

■ 244.4850, -2.2111,
9.2217

■ 90.0840, -3.9854,
18.3433

■ 66.4860, -3.6906,
17.1138

■ 44.1870, -3.5432,
16.4990

■ 23.1760, -3.5378,
14.7546

■ 2.0930, -1.0318,

4.3034

0.0000, 0.0000,
0.0000

167.1660, -5.0118,
20.9024

167.1660, -5.0118,
20.9024

153.8470, -7.8126,
32.5832

180.4850, -2.2111,
9.2217

140.5280,
-10.6133, 44.2639

193.8040, 0.5896,
-2.4591

127.2090,
-13.4140, 55.9447

207.1230, 3.3904,
-14.1399

113.8900,
-16.2148, 67.6255

220.4420, 6.1911,
-25.8206

100.5710,
-19.0155, 79.3062

233.7610, 8.9918,
-37.5014

■ 86.5510, -21.9636,
91.6018

■ 235.8640, 9.4340,
-39.3457

■ 73.2320, -24.7644,
103.2825

■ 59.9130, -27.5651,
114.9633

■ 57.1090, -28.1547,
117.4224

Harmonies

Analogous

The Analogous color harmony consists of three colors that are next to each other on the color wheel.



167.3380, 0.8194, 17.2436



167.1660, -5.0118, 20.9024



166.3030, -9.5164, 19.0283

Triad

The Triadic color harmony groups three colors that are evenly spaced from another and form a triangle on the color wheel.



167.1660, -5.0118, 20.9024



162.2240, -6.5194, -8.9664



163.5280, 12.5577, -14.4951

Complementary

The Complementary color scheme is a pair of colors which are on the opposite of each other on the color wheel.



167.1660, -5.0118, 20.9024



180.8340, 5.0118, -20.9024

Split Complementary

Split-complementary colors differ from the complementary color scheme. The scheme consists of three colors, the original color and two neighbors of the complement color.



161.6150, 10.5428, -21.5874



167.1660, -5.0118, 20.9024



161.1780, -0.0878, -18.5731

Square

The Square scheme is like the rectangle color scheme, but the four colors are evenly spaced on the color wheel.



167.1660, -5.0118, 20.9024



163.8510, -10.7725, 1.8847



160.7520, 6.0383, -23.4615



165.8500, 10.9199, -2.4995

Rectangle

The Rectangle color scheme consists of four colors that form a rectangle on the color wheel.



167.1660, -5.0118, 20.9024



165.8140, -11.2473, 14.1951



160.7520, 6.0383, -23.4615



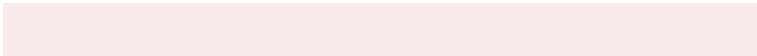
162.6910, 11.9843, -17.2690

Sweetspot

The Sweet Spot groups the original color and five complimentary colors.



167.1660, -5.0118, 20.9024



238.5880, -1.7689, 7.3773



171.0420, 9.8393, 17.5032



119.3920, -1.1793, 4.9182



252.0000, 0.0000, 0.0000



125.0000, 0.0000, 0.0000

Same Dimension

The Same Dimension uses a secret algorithm to generate beautiful new colors.



167.1660, -5.0118, 20.9024



210.5480, -7.6652, 31.9684



177.1450, -9.9315, 12.1508



87.6910, -1.3267, 5.5330



47.2420, -23.2903, 97.1348



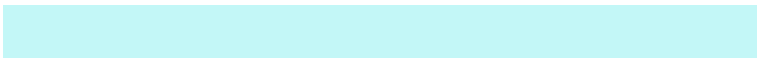
9.2690, -4.5696, 19.0581

Inverse Universe

The Inverse Universe completely reimagines the original color for something new.



180.8340, 5.0118, -20.9024



231.4520, 7.6652, -31.9684



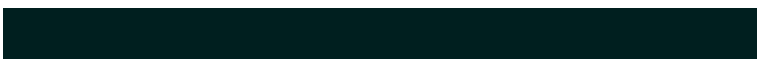
170.8550, 9.9315, -12.1508



91.3090, 1.3267, -5.5330



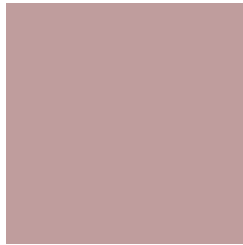
110.7580, 23.2903, -97.1348



21.7310, 4.5696, -19.0581

Previews

White Background



This preview shows how the YUV color 167.1660, -5.0118, 20.9024 looks on a white background.

Color Contrast Check

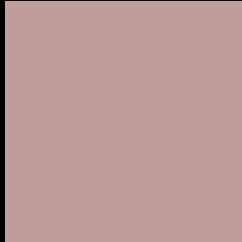
Large Text (above 18pt) WCAG AA × Fail

Any Text WCAG AA × Fail

Large Text (above 18pt) WCAG AAA × Fail

Any Text WCAG AAA × Fail

Black Background



This preview shows how the YUV color 167.1660, -5.0118, 20.9024 looks on a black background.

Color Contrast Check

Large Text (above 18pt) WCAG AA ✓ Pass

Any Text WCAG AA ✓ Pass

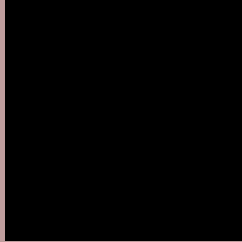
Large Text (above 18pt) WCAG AAA ✓ Pass

Any Text WCAG AAA ✓ Pass

If you want to check with other color combinations, try the [Color Contrast Checker](#).

YUV 167.1660, -5.0118, 20.9024

Background



This preview shows how black text looks on a background with the YUV color 167.1660, -5.0118, 20.9024.



This preview shows how white text looks on a background with the YUV color 167.1660, -5.0118,

Color Blindness Simulation

Color vision deficiency is a very complex topic, and I could not describe the different causes any better than Wikipedia does, so if you want to learn more, you should check out their [article about color blindness](#).

Dichromacy



Original Color

167.1660, -5.0118, 20.9024

Protanopia

165.1530, -2.0474, 3.3738

Deuteranopia

166.8340, -4.8482, 15.0546



Tritanopia

167.4310, -0.2125, 21.5470

Trichromacy



Original Color

167.1660, -5.0118, 20.9024

Protanomaly

165.6700, -2.7953, 9.9364

Deuteranomaly

167.1440, -5.0010, 17.4137

Tritanomaly

167.5620, -2.2491, 21.4321

Monochromacy



Original Color

167.1660, -5.0118, 20.9024

Achromatopsia

167.0000, 0.0000, 0.0000

Achromatomaly

166.8870, -1.9163, 7.9921

CSS Examples

Text

The CSS property to change the color of the text to YUV 167.1660, -5.0118, 20.9024 is called "color". The color property can be set on classes, ids or directly on the HTML element.

This example shows how text in the color `rgb(191, 157, 157)` looks like.

```
.text, #text, p{  
    color:rgb(191, 157, 157)  
}
```

If you want to add a text shadow in that color use the text-shadow property, you can generate a text shadow directly with our [CSS Text Shadow Generator](#).

Here you see how black text with a 4 pixel rgb(191, 157, 157) colored shadow looks like.

```
.shadow{ text-shadow: 4px 4px 2px rgb(191, 157, 157) }
```

Border

The CSS property to change the border of an element to YUV 167.1660, -5.0118, 20.9024 is called "border". The border property can be set on classes, ids or directly on the HTML element.

This example shows the color as border, it can be applied via the CSS property "border" or "border-color".

```
.border, #border, table{ border:4px solid rgb(191, 157, 157) }
```


If only the border color should be changed use the property `border-color`.

```
.border{ border-color:rgb(191, 157, 157) }
```

If you want to add a box shadow in that color use:

Here you see how a box with a 4 pixel `rgb(191, 157, 157)` colored shadow looks like.

```
.boxshadow{ -moz-box-shadow:4px 4px 4px  
4px rgb(191, 157, 157); -webkit-box-  
shadow:4px 4px 4px 4px rgb(191, 157, 157);  
box-shadow:4px 4px 4px 4px rgb(191, 157,  
157) }
```

Background

The CSS property to change the background color of an element to YUV 167.1660, -5.0118, 20.9024 is called "background". The background property can be set on classes, ids or directly on the HTML element.

```
.background, #background, body{  
background: rgb(191, 157, 157) }
```

If only the background color should be changed can be used:

```
.background{ background-color: rgb(191,  
157, 157) }
```

This example shows the color as background, it is applied via the CSS property "background".

To optimize and compress your CSS code, you can use our [online CSS compressor and optimizer](#) based on csstidy. If you want to create a linear or radial gradient as background or border, check our [CSS Gradient Generator](#).

Hey! You found this booklet interesting? Support Converting Colors with the new Membership Option!

The pro membership hides all ads, plus gives you double the colors in the color bucket, and more awesome pro features!

[Learn more, Memberships starting at \\$2.50/m!](#)

**Follow me
on Twitter!**

@ConvertingColor