

Converting Colors

YUV(167.3730, -5.6069,
25.1059)

Have a look what the booklet for
YUV(167.3730, -5.6069, 25.1059)
contains.

YUV(167.3730, -5.6069, 25.1059)	3
<i>Conversions</i>	4
<i>Details</i>	6
<i>Harmonies</i>	12
<i>Previews</i>	24
<i>Color Blindness Simulation</i>	28
<i>CSS Examples</i>	31

Color

**YUV(167.3730, -5.6069,
25.1059)**

Conversions

Conversions Part 1

Format	Color
Hex	C49B9C
RGB	196, 155, 156
RGB Percent	77%, 61%, 61%
CMY	0.2314, 0.3922, 0.3882
CMYK	0.00, 0.21, 0.20, 0.23
HSL	359°, 26%, 69%
HSV	359°, 21%, 77%
XYZ	40.4870, 37.5788, 36.5720
YIQ	167.3730, 24.1150, 9.0030

Conversions

Conversions Part 2

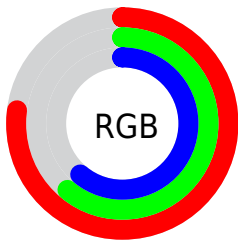
Format	Color
R_{YB}	196, 155, 156
Decimal	12884892
CIE _{Lab}	67.71, 15.39, 5.30
CIE _{LCh}	68, 16.281, 19.000
Yxy	37.5788, 0.3532, 0.3278
Android (android.graphics.Color)	4291074972 (0xFFC49B9C)
YUV	167.3730, -5.6069, 25.1059
Hunter-Lab	61.3015, 10.6140, 7.5391

Details

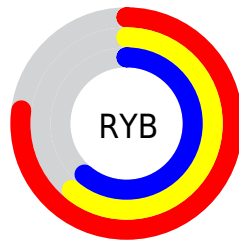
The YUV color $167.3730, -5.6069, 25.1059$ is a light color, and the websafe version is hex $CC9999$. A complement of this color would be $183.6270, 5.6069, -25.1059$, and the grayscale version is $167.0000, 0.0000, 0.0000$.

A 20% lighter version of the original color is $222.8570, -6.3385, 26.4354$, and $115.4760, -5.1647, 23.2615$ is the 20% darker color. If you saturate the color by 10%, you get $153.4670, -8.1182, 37.3014$, and if you desaturate by 10%, it is $181.2790, -3.0955, 12.9103$.

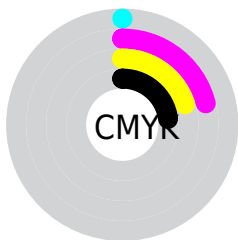
Distribution



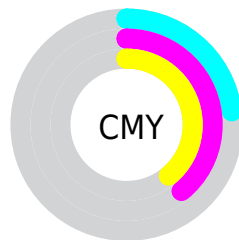
- Red (77%)
- Green (61%)
- Blue (61%)



- Red (77%)
- Yellow (61%)
- Blue (61%)



- Cyan (0%)
- Magenta (21%)
- Yellow (20%)
- Black (23%)



- Cyan (23%)
- Magenta (39%)
- Yellow (39%)

Brightness & Saturation Gradients

These gradients show how the YUV color 167.3730, -5.6069, 25.1059 changes by changing the brightness by 10 percent. The first figure shows a shift by +10% for each color and the second figure -10%.

Similar to the brightness gradients but the following saturation gradients show a change of the YUV color 167.3730, -5.6069, 25.1059 by changing the saturation by 10% instead.

■ 167.3730, -5.6069,
25.1059

■ 167.3730, -5.6069,
25.1059

■ 255.0000, 0.0000,
0.0000

■ 140.7750, -5.3121,
23.8763

■ 222.8570, -6.3385,
26.4354

■ 115.4760, -5.1647,
23.2615

■ 243.1970, -2.0691,
10.3512

■ 90.2910, -4.5805,
22.5468

■ 66.3940, -4.1382,
20.7025

■ 43.7960, -3.8434,
19.4729

■ 22.7850, -3.8380,
17.7286

■ 4.1860, -2.0637,

8.6069

■ 0.0000, 0.0000,
0.0000

■ 167.3730, -5.6069,
25.1059

■ 167.3730, -5.6069,
25.1059

■ 153.4670, -8.1182,
37.3014

■ 181.2790, -3.0955,
12.9103

■ 140.1480,
-10.9190, 48.9822

■ 194.5980, -0.2948,
1.2296

■ 126.2420,
-13.4303, 61.1778

■ 208.5040, 2.2165,
-10.9660

■ 112.9230,
-16.2310, 72.8585

■ 221.8230, 5.0173,
-22.6468

■ 98.9030, -19.1792,
85.1541

■ 235.8430, 7.9654,
-34.9423

■ 84.9970, -21.6905,
97.3496

■ 237.3590, 8.6970,
-36.2718

■ 71.6780, -24.4913,
109.0304

■ 59.1740, -26.7078,
119.9964

Harmonies

Analogous

The Analogous color harmony consists of three colors that are next to each other on the color wheel.



167.5880, 1.6821, 20.5323



167.3730, -5.6069, 25.1059



166.4560, -11.5638, 22.4021

Triad

The Triadic color harmony groups three colors that are evenly spaced from another and form a triangle on the color wheel.



167.3730, -5.6069, 25.1059



161.7570, -8.2612, -10.3109



163.0760, 14.7525, -18.4837

Complementary

The Complementary color scheme is a pair of colors which are on the opposite of each other on the color wheel.



167.3730, -5.6069, 25.1059



183.6270, 5.6069, -25.1059

Split Complementary

Split-complementary colors differ from the complementary color scheme. The scheme consists of three colors, the original color and two neighbors of the complement color.



160.8530, 12.8905, -27.9351



167.3730, -5.6069, 25.1059



160.0420, -0.5137, -21.9618

Square

The Square scheme is like the rectangle color scheme, but the four colors are evenly spaced on the color wheel.



167.3730, -5.6069, 25.1059



163.5800, -13.1039, 2.9993



159.3600, 7.2175, -28.3797



165.8220, 13.3988, -4.2289

Rectangle

The Rectangle color scheme consists of four colors that form a rectangle on the color wheel.



167.3730, -5.6069, 25.1059



165.2660, -13.4421, 18.1837



159.3600, 7.2175, -28.3797



162.0540, 14.7634, -21.9724

Sweetspot

The Sweet Spot groups the original color and five complimentary colors.



167.3730, -5.6069, 25.1059



244.4850, -2.2111, 9.2217



171.6340, 12.0124, 20.4920



121.6910, -1.3267, 5.5330



0.0000, 0.0000, 0.0000



128.0000, 0.0000, 0.0000

Same Dimension

The Same Dimension uses a secret algorithm to generate beautiful new colors.



167.3730, -5.6069, 25.1059



210.3640, -8.5605, 39.1458



178.4120, -11.5421, 15.4247



89.9900, -1.4741, 6.1478



48.5950, -21.9853, 98.5792



9.9810, -4.4276, 20.1877

Inverse Universe

The Inverse Universe completely reimagines the original color for something new.



167.3730, -5.6069, 25.1059



210.3640, -8.5605, 39.1458



172.5880, 11.5421, -15.4247



89.9900, -1.4741, 6.1478



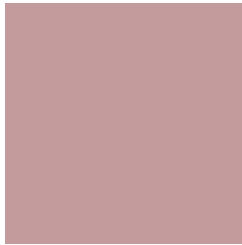
48.5950, -21.9853, 98.5792



9.9810, -4.4276, 20.1877

Previews

White Background



This preview shows how the YUV color 167.3730, -5.6069, 25.1059 looks on a white background.

Color Contrast Check

Large Text (above 18pt) WCAG AA × Fail

Any Text WCAG AA × Fail

Large Text (above 18pt) WCAG AAA × Fail

Any Text WCAG AAA × Fail

Black Background



This preview shows how the YUV color 167.3730, -5.6069, 25.1059 looks on a black background.

Color Contrast Check

Large Text (above 18pt) WCAG AA ✓ Pass

Any Text WCAG AA ✓ Pass

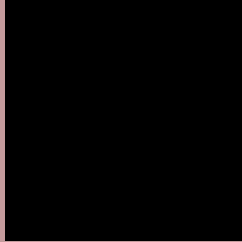
Large Text (above 18pt) WCAG AAA ✓ Pass

Any Text WCAG AAA ✓ Pass

If you want to check with other color combinations, try the [Color Contrast Checker](#).

YUV 167.3730, -5.6069, 25.1059

Background



This preview shows how black text looks on a background with the YUV color 167.3730, -5.6069, 25.1059.



This preview shows how white text looks on a background with the YUV color 167.3730, -5.6069,

Color Blindness Simulation

Color vision deficiency is a very complex topic, and I could not describe the different causes any better than Wikipedia does, so if you want to learn more, you should check out their [article about color blindness](#).

Dichromacy



Original Color

167.3730, -5.6069, 25.1059

Protanopia

165.1530, -2.0474, 3.3738

Deuteranopia

166.3180, -5.5798, 16.3841



Tritanopia

168.1110, -1.5337, 25.3357

Trichromacy



Original Color

167.3730, -5.6069, 25.1059

Protanomaly

166.1540, -3.5269, 11.2659

Deuteranomaly

166.9270, -5.8800, 19.3580

Tritanomaly

167.7690, -2.8441, 25.6356

Monochromacy



Original Color

167.3730, -5.6069, 25.1059

Achromatopsia

167.0000, 0.0000, 0.0000

Achromatomaly

167.4850, -2.2111, 9.2217

CSS Examples

Text

The CSS property to change the color of the text to YUV 167.3730, -5.6069, 25.1059 is called "color". The color property can be set on classes, ids or directly on the HTML element.

This example shows how text in the color `rgb(196, 155, 156)` looks like.

```
.text, #text, p{  
    color:rgb(196, 155, 156)  
}
```

If you want to add a text shadow in that color use the text-shadow property, you can generate a text shadow directly with our [CSS Text Shadow Generator](#).

Here you see how black text with a 4 pixel rgb(196, 155, 156) colored shadow looks like.

```
.shadow{ text-shadow: 4px 4px 2px rgb(196, 155, 156) }
```

Border

The CSS property to change the border of an element to YUV 167.3730, -5.6069, 25.1059 is called "border". The border property can be set on classes, ids or directly on the HTML element.

This example shows the color as border, it can be applied via the CSS property "border" or "border-color".

```
.border, #border, table{ border:4px solid rgb(196, 155, 156) }
```


If only the border color should be changed use the property `border-color`.

```
.border{ border-color:rgb(196, 155, 156) }
```

If you want to add a box shadow in that color use:

Here you see how a box with a 4 pixel `rgb(196, 155, 156)` colored shadow looks like.

```
.boxshadow{ -moz-box-shadow:4px 4px 4px  
4px rgb(196, 155, 156); -webkit-box-  
shadow:4px 4px 4px 4px rgb(196, 155, 156);  
box-shadow:4px 4px 4px 4px rgb(196, 155,  
156) }
```

Background

The CSS property to change the background color of an element to YUV 167.3730, -5.6069, 25.1059 is called "background". The background property can be set on classes, ids or directly on the HTML element.

```
.background, #background, body{  
background: rgb(196, 155, 156) }
```

If only the background color should be changed can be used:

```
.background{ background-color: rgb(196,  
155, 156) }
```

This example shows the color as background, it is applied via the CSS property "background".

To optimize and compress your CSS code, you can use our [online CSS compressor and optimizer](#) based on csstidy. If you want to create a linear or radial gradient as background or border, check our [CSS Gradient Generator](#).

Hey! You found this booklet interesting? Support Converting Colors with the new Membership Option!

The pro membership hides all ads, plus gives you double the colors in the color bucket, and more awesome pro features!

[Learn more, Memberships starting at \\$2.50/m!](#)

**Follow me
on Twitter!**

@ConvertingColor