

Converting Colors

YUV(167.4930, -24.4000,
32.8936)

Have a look what the booklet for
YUV(167.4930, -24.4000, 32.8936)
contains.

YUV(167.4930, -24.4000, 32.8936)	3
<i>Conversions</i>	4
<i>Details</i>	6
<i>Harmonies</i>	12
<i>Previews</i>	24
<i>Color Blindness Simulation</i>	28
<i>CSS Examples</i>	31

Color

**YUV(167.4930, -24.4000,
32.8936)**

Conversions

Conversions Part 1

Format	Color
Hex	CD9E76
RGB	205, 158, 118
RGB Percent	80%, 62%, 46%
CMY	0.1961, 0.3804, 0.5373
CMYK	0.00, 0.23, 0.42, 0.20
HSL	28°, 47%, 63%
HSV	28°, 42%, 80%
XYZ	40.6737, 38.7409, 22.4735
YIQ	167.4930, 40.8520, -2.4760

Conversions

Conversions Part 2

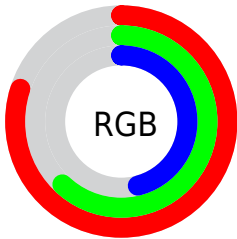
Format	Color
RYB	205, 192, 118
Decimal	13475446
CIELab	68.56, 12.29, 27.60
CIELCh	69, 30.216, 65.999
Yxy	38.7409, 0.3992, 0.3802
Android (android.graphics.Color)	4291665526 (0xFFCD9E76)
YUV	167.4930, -24.4000, 32.8936
Hunter-Lab	62.2422, 7.7216, 22.1619

Details

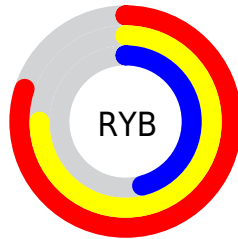
The YUV color **167.4930, -24.4000, 32.8936** is a light color, and the websafe version is hex **CC9966**. A complement of this color would be **155.5070, 24.4000, -32.8936**, and the grayscale version is **168.0000, 0.0000, 0.0000**.

A 20% lighter version of the original color is **220.7700, -24.5366, 30.0197**, and **115.2260, -22.7894, 29.6198** is the 20% darker color. If you saturate the color by 10%, you get **158.7560, -29.9527, 40.5560**, and if you desaturate by 10%, it is **176.3440, -18.4106, 25.1313**.

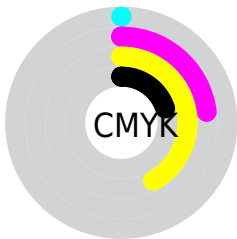
Distribution



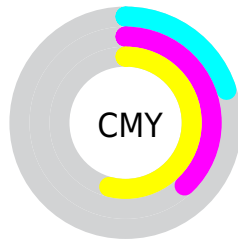
- Red (80%)
- Green (62%)
- Blue (46%)



- Red (80%)
- Yellow (75%)
- Blue (46%)



- Cyan (0%)
- Magenta (23%)
- Yellow (42%)
- Black (20%)



- Cyan (20%)
- Magenta (38%)
- Yellow (54%)

Brightness & Saturation Gradients

These gradients show how the YUV color 167.4930, -24.4000, 32.8936 changes by changing the brightness by 10 percent. The first figure shows a shift by +10% for each color and the second figure -10%.

Similar to the brightness gradients but the following saturation gradients show a change of the YUV color 167.4930, -24.4000, 32.8936 by changing the saturation by 10% instead.

■ 167.4930,
-24.4000, 32.8936

■ 167.4930,
-24.4000, 32.8936

255.0000, 0.0000,
0.0000

■ 141.0090,
-23.6684, 31.5641

■ 220.7700,
-24.5366, 30.0197

■ 115.2260,
-22.7894, 29.6198

■ 240.2840,
-20.8460, 12.9059

■ 89.8560, -21.6210,
28.1903

■ 251.6940,
-12.6671, 2.8994

■ 65.7740, -20.5946,
25.6312

■ 42.6490, -21.0260,
23.9868

■ 23.4340, -11.5530,
18.9134

■ 4.4850, -2.2111,

9.2217

■ 0.0000, 0.0000,
0.0000

■ 167.4930,
-24.4000, 32.8936

■ 167.4930,
-24.4000, 32.8936

■ 158.7560,
-29.9527, 40.5560

■ 176.3440,
-18.4106, 25.1313

■ 149.9050,
-35.9422, 48.3183

■ 185.0810,
-12.8579, 17.4690

■ 141.1680,
-41.4948, 55.9807

■ 193.9320, -6.8685,
9.7066

■ 132.3170,
-47.4843, 63.7430

■ 202.6690, -1.3158,
2.0443

■ 123.5800,
-53.0369, 71.4053

■ 211.5200, 4.6736,
-5.7180

■ 116.4730,
-57.4212, 77.6382

■ 220.2570, 10.2263,
-13.3804

■ 228.8970, 12.8688,
-20.9577

■ 235.3540, 9.6855,
-26.6205

■ 240.0500, 7.3704,
-30.7388

Harmonies

Analogous

The Analogous color harmony consists of three colors that are next to each other on the color wheel.



169.0350, -16.2863, 43.8193



167.4930, -24.4000, 32.8936



165.0300, -25.6508, 14.0057

Triad

The Triadic color harmony groups three colors that are evenly spaced from another and form a triangle on the color wheel.



167.4930, -24.4000, 32.8936



153.3520, 9.1935, -55.5597



170.0220, 20.2022, 6.9967

Complementary

The Complementary color scheme is a pair of colors which are on the opposite of each other on the color wheel.



167.4930, -24.4000, 32.8936



155.5070, 24.4000, -32.8936

Split Complementary

Split-complementary colors differ from the complementary color scheme. The scheme consists of three colors, the original color and two neighbors of the complement color.



165.3710, 27.4251, -23.1274



167.4930, -24.4000, 32.8936



152.1410, 22.6085, -65.0217

Square

The Square scheme is like the rectangle color scheme, but the four colors are evenly spaced on the color wheel.



167.4930, -24.4000, 32.8936



157.6570, -6.7329, -33.9022



157.8360, 28.6749, -50.7222



171.6030, 9.0697, 31.0432

Rectangle

The Rectangle color scheme consists of four colors that form a rectangle on the color wheel.



167.4930, -24.4000, 32.8936



163.4410, -22.4024, -1.2638



157.8360, 28.6749, -50.7222



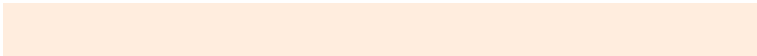
168.7650, 23.2869, -2.4249

Sweetspot

The Sweet Spot groups the original color and five complimentary colors.



167.4930, -24.4000, 32.8936



240.6720, -9.2053, 12.5657



149.4850, 8.1419, 48.6867



118.5620, -5.7001, 8.2771



0.0000, 0.0000, 0.0000



128.0000, 0.0000, 0.0000

Same Dimension

The Same Dimension uses a secret algorithm to generate beautiful new colors.



167.4930, -24.4000, 32.8936



199.0900, -36.5264, 49.0331



192.7340, -36.8439, 10.7573



97.3380, -2.6316, 4.0886



94.2460, -46.4633, 62.9283



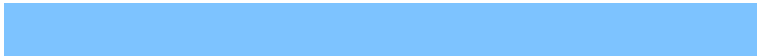
21.9280, -10.8105, 14.0951

Inverse Universe

The Inverse Universe completely reimagines the original color for something new.



155.5070, 24.4000, -32.8936



180.9100, 36.5264, -49.0331



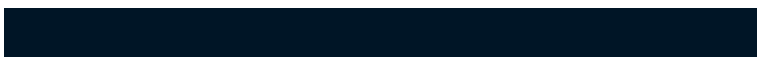
130.2660, 36.8439, -10.7573



96.0750, 2.9210, -3.5738



71.7540, 46.4633, -62.9283



16.6590, 10.5211, -14.6099

Previews

White Background



This preview shows how the YUV color 167.4930, -24.4000, 32.8936 looks on a white background.

Color Contrast Check

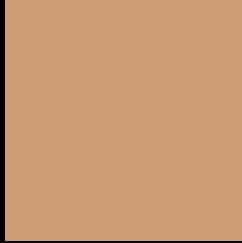
Large Text (above 18pt) WCAG AA × Fail

Any Text WCAG AA × Fail

Large Text (above 18pt) WCAG AAA × Fail

Any Text WCAG AAA × Fail

Black Background



This preview shows how the YUV color 167.4930, -24.4000, 32.8936 looks on a black background.

Color Contrast Check

Large Text (above 18pt) WCAG AA ✓ Pass

Any Text WCAG AA ✓ Pass

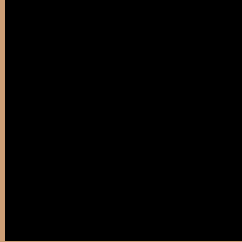
Large Text (above 18pt) WCAG AAA ✓ Pass

Any Text WCAG AAA ✓ Pass

If you want to check with other color combinations, try the [Color Contrast Checker](#).

YUV 167.4930, -24.4000, 32.8936

Background



This preview shows how black text looks on a background with the YUV color 167.4930, -24.4000, 32.8936.



This preview shows how white text looks on a background with the YUV color 167.4930, -24.4000,

Color Blindness Simulation

Color vision deficiency is a very complex topic, and I could not describe the different causes any better than Wikipedia does, so if you want to learn more, you should check out their [article about color blindness](#).

Dichromacy



Original Color

167.4930, -24.4000, 32.8936

Protanopia

165.7570, -21.5722, 12.4911

Deuteranopia

166.8730, -24.0944, 28.1754



Tritanopia

170.4110, -3.1606, 33.8426

Trichromacy



Original Color

167.4930, -24.4000, 32.8936

Protanomaly

166.5730, -22.4675, 19.6685

Deuteranomaly

166.8840, -24.0998, 29.9197

Tritanomaly

169.3480, -11.0176, 33.8978

Monochromacy



Original Color

167.4930, -24.4000, 32.8936

Achromatopsia

167.0000, 0.0000, 0.0000

Achromatomaly

167.3730, -9.0579, 11.9509

CSS Examples

Text

The CSS property to change the color of the text to YUV 167.4930, -24.4000, 32.8936 is called "color". The color property can be set on classes, ids or directly on the HTML element.

This example shows how text in the color `rgb(205, 158, 118)` looks like.

```
.text, #text, p{  
    color:rgb(205, 158, 118)  
}
```

If you want to add a text shadow in that color use the text-shadow property, you can generate a text shadow directly with our [CSS Text Shadow Generator](#).

Here you see how black text with a 4 pixel rgb(205, 158, 118) colored shadow looks like.

```
.shadow{ text-shadow: 4px 4px 2px rgb(205, 158, 118) }
```

Border

The CSS property to change the border of an element to YUV 167.4930, -24.4000, 32.8936 is called "border".

The border property can be set on classes, ids or directly on the HTML element.

This example shows the color as border, it can be applied via the CSS property "border" or "border-color".

```
.border, #border, table{ border:4px solid rgb(205, 158, 118) }
```


If only the border color should be changed use the property `border-color`.

```
.border{ border-color:rgb(205, 158, 118) }
```

If you want to add a box shadow in that color use:

Here you see how a box with a 4 pixel `rgb(205, 158, 118)` colored shadow looks like.

```
.boxshadow{ -moz-box-shadow:4px 4px 4px  
4px rgb(205, 158, 118); -webkit-box-  
shadow:4px 4px 4px 4px rgb(205, 158, 118);  
box-shadow:4px 4px 4px 4px rgb(205, 158,  
118) }
```

Background

The CSS property to change the background color of an element to YUV 167.4930, -24.4000, 32.8936 is called "background". The background property can be set on classes, ids or directly on the HTML element.

```
.background, #background, body{  
background: rgb(205, 158, 118) }
```

If only the background color should be changed can be used:

```
.background{ background-color: rgb(205,  
158, 118) }
```

This example shows the color as background, it is applied via the CSS property "background".

To optimize and compress your CSS code, you can use our [online CSS compressor and optimizer](#) based on csstidy. If you want to create a linear or radial gradient as background or border, check our [CSS Gradient Generator](#).

Hey! You found this booklet interesting? Support Converting Colors with the new Membership Option!

The pro membership hides all ads, plus gives you double the colors in the color bucket, and more awesome pro features!

[Learn more, Memberships starting at \\$2.50/m!](#)

**Follow me
on Twitter!**

@ConvertingColor