

Converting Colors

YUV(167.5850, -7.1904,
19.6580)

Have a look what the booklet for
YUV(167.5850, -7.1904, 19.6580)
contains.

YUV(167.5850, -7.1904, 19.6580)	3
<i>Conversions</i>	4
<i>Details</i>	6
<i>Harmonies</i>	12
<i>Previews</i>	24
<i>Color Blindness Simulation</i>	28
<i>CSS Examples</i>	31

Color

**YUV(167.5850, -7.1904,
19.6580)**

Conversions

Conversions Part 1

Format	Color
Hex	BE9F99
RGB	190, 159, 153
RGB Percent	75%, 62%, 60%
CMY	0.2549, 0.3765, 0.4000
CMYK	0.00, 0.16, 0.19, 0.25
HSL	10°, 22%, 67%
HSV	10°, 19%, 75%
XYZ	39.3831, 38.0433, 35.4044
YIQ	167.5850, 20.4020, 4.7060

Conversions

Conversions Part 2

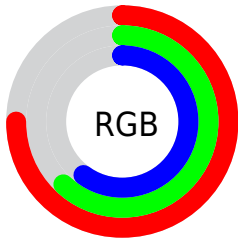
Format	Color
R _Y B	190, 160, 153
Decimal	12492697
CIE Lab	68.05, 10.46, 7.39
CIE LCh	68, 12.809, 35.230
Yxy	38.0433, 0.3490, 0.3372
Android (android.graphics.Color)	4290682777 (0xFFBE9F99)
YUV	167.5850, -7.1904, 19.6580
Hunter-Lab	61.6793, 6.0361, 9.1426

Details

The YUV color $167.5850, -7.1904, 19.6580$ is a light color, and the websafe version is hex $CC9999$. A complement of this color would be $175.4150, 7.1904, -19.6580$, and the grayscale version is $168.0000, 0.0000, 0.0000$.

A 20% lighter version of the original color is $223.0690, -7.9220, 20.9875$, and $115.6880, -6.7482, 17.8136$ is the 20% darker color. If you saturate the color by 10%, you get $156.0270, -10.8593, 29.7943$, and if you desaturate by 10%, it is $179.1430, -3.5215, 9.5216$.

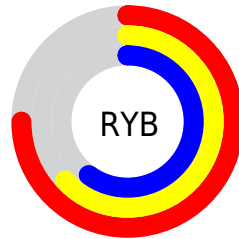
Distribution



Red (75%)

Green (62%)

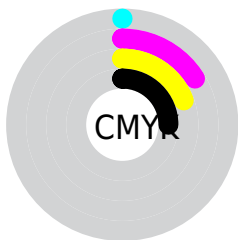
Blue (60%)



Red (75%)

Yellow (63%)

Blue (60%)

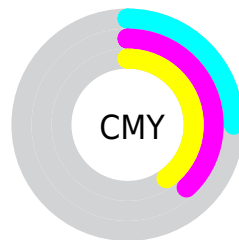


Cyan (0%)

Magenta (16%)

Yellow (19%)

Black (25%)



Cyan (25%)

Magenta (38%)

Yellow (40%)

Brightness & Saturation Gradients

These gradients show how the YUV color 167.5850, -7.1904, 19.6580 changes by changing the brightness by 10 percent. The first figure shows a shift by +10% for each color and the second figure -10%.

Similar to the brightness gradients but the following saturation gradients show a change of the YUV color 167.5850, -7.1904, 19.6580 by changing the saturation by 10% instead.

■ 167.5850, -7.1904,
19.6580

■ 167.5850, -7.1904,
19.6580

■ 255.0000, 0.0000,
0.0000

■ 141.2860, -7.0430,
19.0432

■ 223.0690, -7.9220,
20.9875

■ 115.6880, -6.7482,
17.8136

■ 245.2030, -4.5371,
8.5920

■ 90.5030, -6.1640,
17.0989

■ 67.2040, -6.0166,
16.4841

■ 44.7200, -5.2850,
15.1546

■ 23.5950, -5.7163,
13.5102

■ 1.4950, -0.7370,

3.0739

0.0000, 0.0000,
0.0000

167.5850, -7.1904,
19.6580

167.5850, -7.1904,
19.6580

156.0270,
-10.8593, 29.7943

179.1430, -3.5215,
9.5216

144.4690,
-14.5282, 39.9307

190.7010, 0.1474,
-0.6148

132.9110,
-18.1971, 50.0671

202.2590, 3.8163,
-10.7511

121.3530,
-21.8660, 60.2034

213.8170, 7.4852,
-20.8875

109.7950,
-25.5349, 70.3398

225.3750, 11.1541,
-31.0239

■ 98.2370, -29.2038,
80.4762

■ 235.5650, 9.5815,
-39.9605

■ 87.2660, -33.1621,
90.0977

■ 75.7080, -36.8310,
100.2341

■ 75.0070, -36.9785,
100.8489

Harmonies

Analogous

The Analogous color harmony consists of three colors that are next to each other on the color wheel.



168.2520, -2.0962, 19.0730



167.5850, -7.1904, 19.6580



166.6400, -10.6685, 15.2247

Triad

The Triadic color harmony groups three colors that are evenly spaced from another and form a triangle on the color wheel.



167.5850, -7.1904, 19.6580



162.7010, -3.3036, -13.7698



165.6320, 11.5204, -8.4473

Complementary

The Complementary color scheme is a pair of colors which are on the opposite of each other on the color wheel.



167.5850, -7.1904, 19.6580



175.4150, 7.1904, -19.6580

Split Complementary

Split-complementary colors differ from the complementary color scheme. The scheme consists of three colors, the original color and two neighbors of the complement color.



163.7510, 10.9688, -18.1986



167.5850, -7.1904, 19.6580



161.8510, 2.5385, -20.9173

Square

The Square scheme is like the rectangle color scheme, but the four colors are evenly spaced on the color wheel.



167.5850, -7.1904, 19.6580



163.8010, -8.2829, -3.3335



162.3330, 8.2168, -22.2170



167.3130, 8.7197, 3.2335

Rectangle

The Rectangle color scheme consists of four colors that form a rectangle on the color wheel.



167.5850, -7.1904, 19.6580



165.4930, -11.0890, 10.0916



162.3330, 8.2168, -22.2170



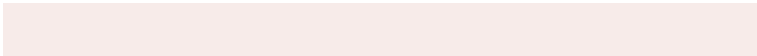
164.7240, 11.9681, -12.0359

Sweetspot

The Sweet Spot groups the original color and five complimentary colors.



167.5850, -7.1904, 19.6580



238.3600, -2.6425, 7.5773



167.5970, 8.0867, 19.6474



119.8650, -1.9054, 4.5034



252.0000, 0.0000, 0.0000



125.0000, 0.0000, 0.0000

Same Dimension

The Same Dimension uses a secret algorithm to generate beautiful new colors.



167.5850, -7.1904, 19.6580



212.9130, -11.2961, 29.8943



178.1510, -12.3994, 10.3916



88.2780, -1.6161, 5.0182



62.5040, -30.8145, 83.7500



12.2040, -6.0166, 16.4841

Inverse Universe

The Inverse Universe completely reimagines the original color for something new.



175.4150, 7.1904, -19.6580



224.6740, 11.0067, -30.4091



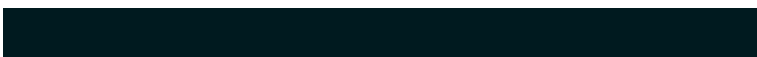
164.8490, 12.3994, -10.3916



90.7220, 1.6161, -5.0182



95.4960, 30.8145, -83.7500



18.7960, 6.0166, -16.4841

Previews

White Background



This preview shows how the YUV color 167.5850, -7.1904, 19.6580 looks on a white background.

Color Contrast Check

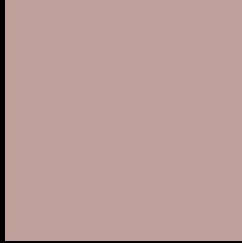
Large Text (above 18pt) WCAG AA × Fail

Any Text WCAG AA × Fail

Large Text (above 18pt) WCAG AAA × Fail

Any Text WCAG AAA × Fail

Black Background



This preview shows how the YUV color 167.5850, -7.1904, 19.6580 looks on a black background.

Color Contrast Check

Large Text (above 18pt) WCAG AA ✓ Pass

Any Text WCAG AA ✓ Pass

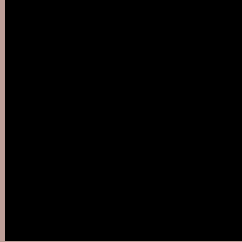
Large Text (above 18pt) WCAG AAA ✓ Pass

Any Text WCAG AAA ✓ Pass

If you want to check with other color combinations, try the [Color Contrast Checker](#).

YUV 167.5850, -7.1904, 19.6580

Background



This preview shows how black text looks on a background with the YUV color 167.5850, -7.1904, 19.6580.



This preview shows how white text looks on a background with the YUV color 167.5850, -7.1904,

Color Blindness Simulation

Color vision deficiency is a very complex topic, and I could not describe the different causes any better than Wikipedia does, so if you want to learn more, you should check out their [article about color blindness](#).

Dichromacy



Original Color

167.5850, -7.1904, 19.6580

Protanopia

165.7680, -4.8156, 4.5885

Deuteranopia

167.2750, -7.0376, 17.2988



Tritanopia

168.8330, 0.0823, 20.3175

Trichromacy



Original Color

167.5850, -7.1904, 19.6580

Protanomaly

166.5730, -5.7055, 10.0215

Deuteranomaly

167.5740, -7.1850, 17.9136

Tritanomaly

168.4370, -2.6804, 19.7878

Monochromacy



Original Color

167.5850, -7.1904, 19.6580

Achromatopsia

168.0000, 0.0000, 0.0000

Achromatomaly

168.0610, -2.4951, 6.9625

CSS Examples

Text

The CSS property to change the color of the text to YUV 167.5850, -7.1904, 19.6580 is called "color". The color property can be set on classes, ids or directly on the HTML element.

This example shows how text in the color `rgb(190, 159, 153)` looks like.

```
.text, #text, p{  
    color:rgb(190, 159, 153)  
}
```

If you want to add a text shadow in that color use the text-shadow property, you can generate a text shadow directly with our [CSS Text Shadow Generator](#).

Here you see how black text with a 4 pixel rgb(190, 159, 153) colored shadow looks like.

```
.shadow{ text-shadow: 4px 4px 2px rgb(190, 159, 153) }
```

Border

The CSS property to change the border of an element to YUV 167.5850, -7.1904, 19.6580 is called "border". The border property can be set on classes, ids or directly on the HTML element.

This example shows the color as border, it can be applied via the CSS property "border" or "border-color".

```
.border, #border, table{ border:4px solid rgb(190, 159, 153) }
```


If only the border color should be changed use the property `border-color`.

```
.border{ border-color:rgb(190, 159, 153) }
```

If you want to add a box shadow in that color use:

Here you see how a box with a 4 pixel `rgb(190, 159, 153)` colored shadow looks like.

```
.boxshadow{ -moz-box-shadow:4px 4px 4px  
4px rgb(190, 159, 153); -webkit-box-  
shadow:4px 4px 4px 4px rgb(190, 159, 153);  
box-shadow:4px 4px 4px 4px rgb(190, 159,  
153) }
```

Background

The CSS property to change the background color of an element to YUV 167.5850, -7.1904, 19.6580 is called "background". The background property can be set on classes, ids or directly on the HTML element.

```
.background, #background, body{  
background: rgb(190, 159, 153) }
```

If only the background color should be changed can be used:

```
.background{ background-color: rgb(190,  
159, 153) }
```

This example shows the color as background, it is applied via the CSS property "background".

To optimize and compress your CSS code, you can use our [online CSS compressor and optimizer](#) based on csstidy. If you want to create a linear or radial gradient as background or border, check our [CSS Gradient Generator](#).

Hey! You found this booklet interesting? Support Converting Colors with the new Membership Option!

The pro membership hides all ads, plus gives you double the colors in the color bucket, and more awesome pro features!

[Learn more, Memberships starting at \\$2.50/m!](#)

**Follow me
on Twitter!**

@ConvertingColor