

Converting Colors

YUV(167.7170, -10.7065,
27.4352)

Have a look what the booklet for
YUV(167.7170, -10.7065, 27.4352)
contains.

YUV(167.7170, -10.7065, 27.4352)	3
<i>Conversions</i>	4
<i>Details</i>	6
<i>Harmonies</i>	12
<i>Previews</i>	24
<i>Color Blindness Simulation</i>	28
<i>CSS Examples</i>	31

Color

**YUV(167.7170, -10.7065,
27.4352)**

Conversions

Conversions Part 1

Format	Color
Hex	C79C92
RGB	199, 156, 146
RGB Percent	78%, 61%, 57%
CMY	0.2196, 0.3882, 0.4275
CMYK	0.00, 0.22, 0.27, 0.22
HSL	11°, 32%, 68%
HSV	11°, 27%, 78%
XYZ	40.6300, 37.9944, 32.3863
YIQ	167.7170, 28.8380, 6.0060

Conversions

Conversions Part 2

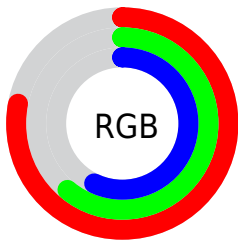
Format	Color
R_{YB}	199, 158, 146
Decimal	13081746
CIE _{Lab}	68.02, 14.51, 11.35
CIE _{LCh}	68, 18.423, 38.033
Yxy	37.9944, 0.3660, 0.3423
Android (android.graphics.Color)	4291271826 (0xFFC79C92)
YUV	167.7170, -10.7065, 27.4352
Hunter-Lab	61.6396, 9.7897, 11.9959

Details

The YUV color **167.7170, -10.7065, 27.4352** is a light color, and the websafe version is hex **CC9999**. A complement of this color would be **177.2830, 10.7065, -27.4352**, and the grayscale version is **168.0000, 0.0000, 0.0000**.

A 20% lighter version of the original color is **222.9020, -11.2907, 28.1499**, and **115.6350, -9.6801, 24.8761** is the 20% darker color. If you saturate the color by 10%, you get **156.0450, -14.8122, 37.6715**, and if you desaturate by 10%, it is **179.3890, -6.6008, 17.1988**.

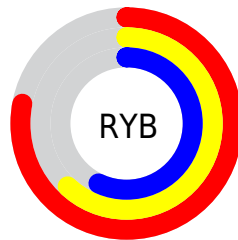
Distribution



Red (78%)

Green (61%)

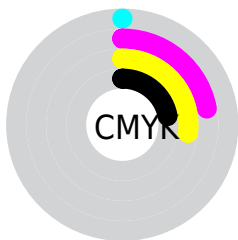
Blue (57%)



Red (78%)

Yellow (62%)

Blue (57%)

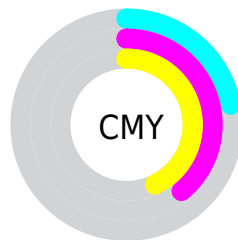


Cyan (0%)

Magenta (22%)

Yellow (27%)

Black (22%)



Cyan (22%)

Magenta (39%)

Yellow (43%)

Brightness & Saturation Gradients

These gradients show how the YUV color 167.7170, -10.7065, 27.4352 changes by changing the brightness by 10 percent. The first figure shows a shift by +10% for each color and the second figure -10%.

Similar to the brightness gradients but the following saturation gradients show a change of the YUV color 167.7170, -10.7065, 27.4352 by changing the saturation by 10% instead.

■ 167.7170,
-10.7065, 27.4352

■ 167.7170,
-10.7065, 27.4352

255.0000, 0.0000,
0.0000

■ 141.1190,
-10.4117, 26.2056

■ 222.9020,
-11.2907, 28.1499

■ 115.6350, -9.6801,
24.8761

■ 242.5300, -7.1633,
10.9362

■ 90.4500, -9.0958,
24.1614

■ 66.5530, -8.6536,
22.3170

■ 44.0690, -7.9220,
20.9875

■ 22.4880, -10.1006,
19.7430

■ 4.4850, -2.2111,

9.2217

■ 0.0000, 0.0000,
0.0000

■ 167.7170,
-10.7065, 27.4352

■ 167.7170,
-10.7065, 27.4352

■ 156.0450,
-14.8122, 37.6715

■ 179.3890, -6.6008,
17.1988

■ 144.3730,
-18.9179, 47.9079

■ 191.0610, -2.4951,
6.9625

■ 132.7010,
-23.0236, 58.1442

■ 202.7330, 1.6106,
-3.2738

■ 120.4420,
-26.8399, 68.8954

■ 214.9920, 5.4269,
-14.0250

■ 108.8840,
-30.5088, 79.0317

■ 226.6640, 9.5326,
-24.2613

■ 97.2120, -34.6145,
89.2681

■ 237.0820, 8.8336,
-33.3979

■ 85.5400, -38.7202,
99.5044

■ 238.2560, 8.2548,
-34.4275

■ 81.8070, -40.3309,
102.7783

Harmonies

Analogous

The Analogous color harmony consists of three colors that are next to each other on the color wheel.



168.6660, -3.2863, 27.4799



167.7170, -10.7065, 27.4352



166.7070, -15.6316, 20.4280

Triad

The Triadic color harmony groups three colors that are evenly spaced from another and form a triangle on the color wheel.



167.7170, -10.7065, 27.4352



160.5430, -3.7187, -20.6472



165.7610, 15.8938, -11.1914

Complementary

The Complementary color scheme is a pair of colors which are on the opposite of each other on the color wheel.



167.7170, -10.7065, 27.4352



177.2830, 10.7065, -27.4352

Split Complementary

Split-complementary colors differ from the complementary color scheme. The scheme consists of three colors, the original color and two neighbors of the complement color.



162.1890, 16.6688, -26.4758



167.7170, -10.7065, 27.4352



159.1810, 5.3338, -30.8537

Square

The Square scheme is like the rectangle color scheme, but the four colors are evenly spaced on the color wheel.



167.7170, -10.7065, 27.4352



162.5680, -11.6190, -6.6371



159.5210, 13.0541, -33.7829



167.8340, 11.9138, 5.4076

Rectangle

The Rectangle color scheme consists of four colors that form a rectangle on the color wheel.



167.7170, -10.7065, 27.4352



165.2500, -15.8993, 12.9358



159.5210, 13.0541, -33.7829



164.6570, 16.9311, -17.2392

Sweetspot

The Sweet Spot groups the original color and five complimentary colors.



167.7170, -10.7065, 27.4352



242.7410, -3.8163, 10.7511



166.7490, 10.9697, 28.2841



120.0610, -2.4951, 6.9625



0.0000, 0.0000, 0.0000



128.0000, 0.0000, 0.0000

Same Dimension

The Same Dimension uses a secret algorithm to generate beautiful new colors.



167.7170, -10.7065, 27.4352



206.9100, -16.7176, 42.1749



182.9790, -18.2306, 14.0504



93.2780, -1.6161, 5.0182



66.9340, -32.9985, 84.2499



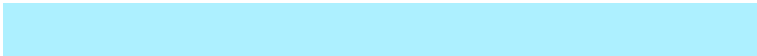
14.8730, -7.3324, 18.5284

Inverse Universe

The Inverse Universe completely reimagines the original color for something new.



177.2830, 10.7065, -27.4352



221.6770, 16.4282, -42.6897



162.0210, 18.2306, -14.0504



95.7220, 1.6161, -5.0182



96.0660, 32.9985, -84.2499



21.1270, 7.3324, -18.5284

Previews

White Background



This preview shows how the YUV color 167.7170, -10.7065, 27.4352 looks on a white background.

Color Contrast Check

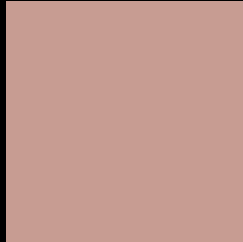
Large Text (above 18pt) WCAG AA × Fail

Any Text WCAG AA × Fail

Large Text (above 18pt) WCAG AAA × Fail

Any Text WCAG AAA × Fail

Black Background



This preview shows how the YUV color 167.7170, -10.7065, 27.4352 looks on a black background.

Color Contrast Check

Large Text (above 18pt) WCAG AA ✓ Pass

Any Text WCAG AA ✓ Pass

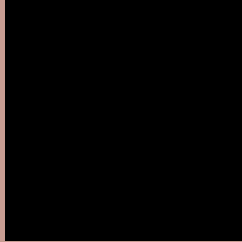
Large Text (above 18pt) WCAG AAA ✓ Pass

Any Text WCAG AAA ✓ Pass

If you want to check with other color combinations, try the [Color Contrast Checker](#).

YUV 167.7170, -10.7065, 27.4352

Background



This preview shows how black text looks on a background with the YUV color 167.7170, -10.7065, 27.4352.



This preview shows how white text looks on a background with the YUV color 167.7170, -10.7065, 27.4352.

Color Blindness Simulation

Color vision deficiency is a very complex topic, and I could not describe the different causes any better than Wikipedia does, so if you want to learn more, you should check out their [article about color blindness](#).

Dichromacy



Original Color

167.7170, -10.7065, 27.4352

Protanopia

165.7960, -7.2944, 6.3179

Deuteranopia

167.2600, -10.9742, 19.9430



Tritanopia

168.7200, -1.8340, 28.3096

Trichromacy



Original Color

167.7170, -10.7065, 27.4352

Protanomaly

166.4980, -8.6265, 13.5953

Deuteranomaly

167.5700, -11.1270, 22.3021

Tritanomaly

168.2100, -5.0335, 27.8798

Monochromacy



Original Color

167.7170, -10.7065, 27.4352

Achromatopsia

168.0000, 0.0000, 0.0000

Achromatomaly

168.0290, -3.9583, 9.6216

CSS Examples

Text

The CSS property to change the color of the text to YUV 167.7170, -10.7065, 27.4352 is called "color". The color property can be set on classes, ids or directly on the HTML element.

This example shows how text in the color `rgb(199, 156, 146)` looks like.

```
.text, #text, p{  
    color:rgb(199, 156, 146)  
}
```

If you want to add a text shadow in that color use the text-shadow property, you can generate a text shadow directly with our [CSS Text Shadow Generator](#).

Here you see how black text with a 4 pixel rgb(199, 156, 146) colored shadow looks like.

```
.shadow{ text-shadow: 4px 4px 2px rgb(199, 156, 146) }
```

Border

The CSS property to change the border of an element to YUV 167.7170, -10.7065, 27.4352 is called "border".

The border property can be set on classes, ids or directly on the HTML element.

This example shows the color as border, it can be applied via the CSS property "border" or "border-color".

```
.border, #border, table{ border:4px solid rgb(199, 156, 146) }
```


If only the border color should be changed use the property `border-color`.

```
.border{ border-color:rgb(199, 156, 146) }
```

If you want to add a box shadow in that color use:

Here you see how a box with a 4 pixel `rgb(199, 156, 146)` colored shadow looks like.

```
.boxshadow{ -moz-box-shadow:4px 4px 4px  
4px rgb(199, 156, 146); -webkit-box-  
shadow:4px 4px 4px 4px rgb(199, 156, 146);  
box-shadow:4px 4px 4px 4px rgb(199, 156,  
146) }
```

Background

The CSS property to change the background color of an element to YUV 167.7170, -10.7065, 27.4352 is called "background". The background property can be set on classes, ids or directly on the HTML element.

```
.background, #background, body{  
background: rgb(199, 156, 146) }
```

If only the background color should be changed can be used:

```
.background{ background-color: rgb(199,  
156, 146) }
```

This example shows the color as background, it is applied via the CSS property "background".

To optimize and compress your CSS code, you can use our [online CSS compressor and optimizer](#) based on csstidy. If you want to create a linear or radial gradient as background or border, check our [CSS Gradient Generator](#).

Hey! You found this booklet interesting? Support Converting Colors with the new Membership Option!

The pro membership hides all ads, plus gives you double the colors in the color bucket, and more awesome pro features!

[Learn more, Memberships starting at \\$2.50/m!](#)

**Follow me
on Twitter!**

@ConvertingColor