

Converting Colors

YUV(167.7740, -3.8326,
15.9842)

Have a look what the booklet for
YUV(167.7740, -3.8326, 15.9842)
contains.

YUV(167.7740, -3.8326, 15.9842)	3
<i>Conversions</i>	4
<i>Details</i>	6
<i>Harmonies</i>	12
<i>Previews</i>	24
<i>Color Blindness Simulation</i>	28
<i>CSS Examples</i>	31

Color

**YUV(167.7740, -3.8326,
15.9842)**

Conversions

Conversions Part 1

Format	Color
Hex	BAA0A0
RGB	186, 160, 160
RGB Percent	73%, 63%, 63%
CMY	0.2706, 0.3725, 0.3725
CMYK	0.00, 0.14, 0.14, 0.27
HSL	0°, 16%, 68%
HSV	0°, 14%, 73%
XYZ	39.1657, 38.1188, 38.5511
YIQ	167.7740, 15.4960, 5.5120

Conversions

Conversions Part 2

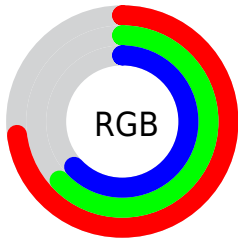
Format	Color
RYB	186, 160, 160
Decimal	12230816
CIELab	68.11, 9.54, 3.53
CIELCh	68, 10.167, 20.287
Yxy	38.1188, 0.3381, 0.3291
Android (android.graphics.Color)	4290420896 (0xFFBAA0A0)
YUV	167.7740, -3.8326, 15.9842
Hunter-Lab	61.7404, 5.1876, 6.1972

Details

The YUV color **167.7740, -3.8326, 15.9842** is a light color, and the websafe version is hex **CC9999**. A complement of this color would be **178.2260, 3.8326, -15.9842**, and the grayscale version is **168.0000, 0.0000, 0.0000**.

A 20% lighter version of the original color is **223.0730, -3.9800, 16.5990**, and **116.1760, -3.5378, 14.7546** is the 20% darker color. If you saturate the color by 10%, you get **154.4550, -6.6333, 27.6650**, and if you desaturate by 10%, it is **181.0930, -1.0318, 4.3034**.

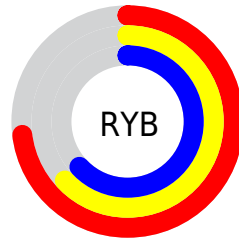
Distribution



Red (73%)

Green (63%)

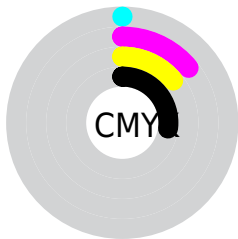
Blue (63%)



Red (73%)

Yellow (63%)

Blue (63%)

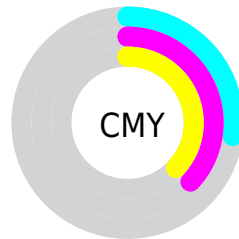


Cyan (0%)

Magenta (14%)

Yellow (14%)

Black (27%)



Cyan (27%)

Magenta (37%)

Yellow (37%)

Brightness & Saturation Gradients

These gradients show how the YUV color 167.7740, -3.8326, 15.9842 changes by changing the brightness by 10 percent. The first figure shows a shift by +10% for each color and the second figure -10%.

Similar to the brightness gradients but the following saturation gradients show a change of the YUV color 167.7740, -3.8326, 15.9842 by changing the saturation by 10% instead.

■ 167.7740, -3.8326,
15.9842

■ 167.7740, -3.8326,
15.9842

255.0000, 0.0000,
0.0000

■ 141.4750, -3.6852,
15.3694

■ 223.0730, -3.9800,
16.5990

■ 116.1760, -3.5378,
14.7546

■ 246.5880, -1.7689,
7.3773

■ 90.8770, -3.3904,
14.1399

■ 67.5780, -3.2430,
13.5251

■ 44.9800, -2.9481,
12.2955

■ 24.3820, -2.6533,
11.0660

■ 1.1960, -0.5896,

2.4591

0.0000, 0.0000,
0.0000

167.7740, -3.8326,
15.9842

167.7740, -3.8326,
15.9842

154.4550, -6.6333,
27.6650

181.0930, -1.0318,
4.3034

141.8370, -9.2866,
38.7310

193.7110, 1.6215,
-6.7625

128.5180,
-12.0874, 50.4117

207.0300, 4.4222,
-18.4433

115.9000,
-14.7407, 61.4777

219.6480, 7.0755,
-29.5093

102.5810,
-17.5414, 73.1585

232.9670, 9.8763,
-41.1901

■ 89.2620, -20.3422,
84.8392

■ 234.3690, 10.1711,
-42.4196

■ 76.6440, -22.9955,
95.9052

■ 63.3250, -25.7962,
107.5860

■ 55.6140, -27.4177,
114.3485

Harmonies

Analogous

The Analogous color harmony consists of three colors that are next to each other on the color wheel.



167.9030, 0.5408, 13.2401



167.7740, -3.8326, 15.9842



167.4380, -7.6109, 14.5249

Triad

The Triadic color harmony groups three colors that are evenly spaced from another and form a triangle on the color wheel.



167.7740, -3.8326, 15.9842



163.9900, -4.9251, -7.0072



165.3390, 9.1999, -10.8213

Complementary

The Complementary color scheme is a pair of colors which are on the opposite of each other on the color wheel.



167.7740, -3.8326, 15.9842



178.2260, 3.8326, -15.9842

Split Complementary

Split-complementary colors differ from the complementary color scheme. The scheme consists of three colors, the original color and two neighbors of the complement color.



163.6650, 8.0532, -16.3692



167.7740, -3.8326, 15.9842



162.9120, 0.0434, -13.9548

Square

The Square scheme is like the rectangle color scheme, but the four colors are evenly spaced on the color wheel.



167.7740, -3.8326, 15.9842



164.9480, -7.8624, 1.7996



162.7420, 4.5642, -17.3137



166.7530, 8.0098, -2.4144

Rectangle

The Rectangle color scheme consists of four colors that form a rectangle on the color wheel.



167.7740, -3.8326, 15.9842



166.1880, -8.4737, 11.2361



162.7420, 4.5642, -17.3137



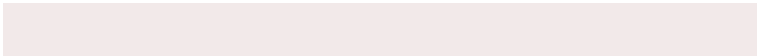
164.9150, 8.9159, -13.0805

Sweetspot

The Sweet Spot groups the original color and five complimentary colors.



167.7740, -3.8326, 15.9842



235.6910, -1.3267, 5.5330



170.7380, 7.5242, 13.3848



117.7940, -0.8844, 3.6887



250.0000, 0.0000, 0.0000



122.0000, 0.0000, 0.0000

Same Dimension

The Same Dimension uses a secret algorithm to generate beautiful new colors.



167.7740, -3.8326, 15.9842



213.2590, -6.0437, 25.2059



175.4050, -7.5947, 9.2918



85.6910, -1.3267, 5.5330



46.6440, -22.9955, 95.9052



8.3720, -4.1274, 17.2138

Inverse Universe

The Inverse Universe completely reimagines the original color for something new.



178.2260, 3.8326, -15.9842



229.7410, 6.0437, -25.2059



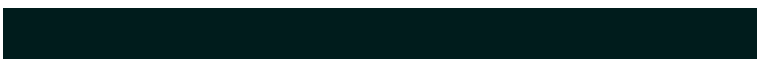
170.5950, 7.5947, -9.2918



89.3090, 1.3267, -5.5330



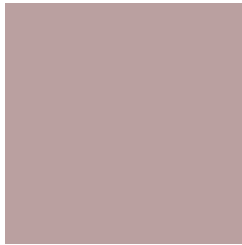
109.3560, 22.9955, -95.9052



19.6280, 4.1274, -17.2138

Previews

White Background



This preview shows how the YUV color 167.7740, -3.8326, 15.9842 looks on a white background.

Color Contrast Check

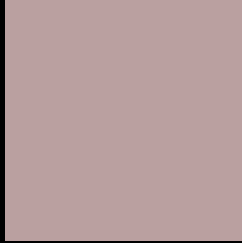
Large Text (above 18pt) WCAG AA × Fail

Any Text WCAG AA × Fail

Large Text (above 18pt) WCAG AAA × Fail

Any Text WCAG AAA × Fail

Black Background



This preview shows how the YUV color 167.7740, -3.8326, 15.9842 looks on a black background.

Color Contrast Check

Large Text (above 18pt) WCAG AA ✓ Pass

Any Text WCAG AA ✓ Pass

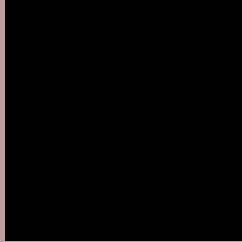
Large Text (above 18pt) WCAG AAA ✓ Pass

Any Text WCAG AAA ✓ Pass

If you want to check with other color combinations, try the [Color Contrast Checker](#).

YUV 167.7740, -3.8326, 15.9842

Background



This preview shows how black text looks on a background with the YUV color 167.7740, -3.8326, 15.9842.



This preview shows how white text looks on a background with the YUV color 167.7740, -3.8326,

15.9842.

Color Blindness Simulation

Color vision deficiency is a very complex topic, and I could not describe the different causes any better than Wikipedia does, so if you want to learn more, you should check out their [article about color blindness](#).

Dichromacy



Original Color

167.7740, -3.8326, 15.9842

Protanopia

166.2670, -1.6106, 3.2738

Deuteranopia

167.7630, -3.8272, 14.2398



Tritanopia

168.1530, 1.4036, 16.5288

Trichromacy



Original Color

167.7740, -3.8326, 15.9842

Protanomaly

166.7730, -2.3531, 8.0921

Deuteranomaly

168.0620, -3.9746, 14.8546

Tritanomaly

168.2840, -0.6330, 16.4139

Monochromacy



Original Color

167.7740, -3.8326, 15.9842

Achromatopsia

168.0000, 0.0000, 0.0000

Achromatomaly

167.9900, -1.4741, 6.1478

CSS Examples

Text

The CSS property to change the color of the text to YUV 167.7740, -3.8326, 15.9842 is called "color". The color property can be set on classes, ids or directly on the HTML element.

This example shows how text in the color `rgb(186, 160, 160)` looks like.

```
.text, #text, p{  
    color:rgb(186, 160, 160)  
}
```

If you want to add a text shadow in that color use the text-shadow property, you can generate a text shadow directly with our [CSS Text Shadow Generator](#).

Here you see how black text with a 4 pixel rgb(186, 160, 160) colored shadow looks like.

```
.shadow{ text-shadow: 4px 4px 2px rgb(186, 160, 160) }
```

Border

The CSS property to change the border of an element to YUV 167.7740, -3.8326, 15.9842 is called "border". The border property can be set on classes, ids or directly on the HTML element.

This example shows the color as border, it can be applied via the CSS property "border" or "border-color".

```
.border, #border, table{ border:4px solid rgb(186, 160, 160) }
```


If only the border color should be changed use the property `border-color`.

```
.border{ border-color:rgb(186, 160, 160) }
```

If you want to add a box shadow in that color use:

Here you see how a box with a 4 pixel `rgb(186, 160, 160)` colored shadow looks like.

```
.boxshadow{ -moz-box-shadow:4px 4px 4px  
4px rgb(186, 160, 160); -webkit-box-  
shadow:4px 4px 4px 4px rgb(186, 160, 160);  
box-shadow:4px 4px 4px 4px rgb(186, 160,  
160) }
```

Background

The CSS property to change the background color of an element to YUV 167.7740, -3.8326, 15.9842 is called "background". The background property can be set on classes, ids or directly on the HTML element.

```
.background, #background, body{  
background: rgb(186, 160, 160) }
```

If only the background color should be changed can be used:

```
.background{ background-color: rgb(186,  
160, 160) }
```

This example shows the color as background, it is applied via the CSS property "background".

To optimize and compress your CSS code, you can use our [online CSS compressor and optimizer](#) based on csstidy. If you want to create a linear or radial gradient as background or border, check our [CSS Gradient Generator](#).

Hey! You found this booklet interesting? Support Converting Colors with the new Membership Option!

The pro membership hides all ads, plus gives you double the colors in the color bucket, and more awesome pro features!

[Learn more, Memberships starting at \\$2.50/m!](#)

**Follow me
on Twitter!**

@ConvertingColor