

Converting Colors

YUV(167.9490, -5.8909,
22.8467)

Have a look what the booklet for
YUV(167.9490, -5.8909, 22.8467)
contains.

YUV(167.9490, -5.8909, 22.8467)	3
<i>Conversions</i>	4
<i>Details</i>	6
<i>Harmonies</i>	12
<i>Previews</i>	24
<i>Color Blindness Simulation</i>	28
<i>CSS Examples</i>	31

Color

**YUV(167.9490, -5.8909,
22.8467)**

Conversions

Conversions Part 1

Format	Color
Hex	C29D9C
RGB	194, 157, 156
RGB Percent	76%, 62%, 61%
CMY	0.2392, 0.3843, 0.3882
CMYK	0.00, 0.19, 0.20, 0.24
HSL	2°, 24%, 69%
HSV	2°, 20%, 76%
XYZ	40.3059, 37.9836, 36.6597
YIQ	167.9490, 22.3730, 7.5330

Conversions

Conversions Part 2

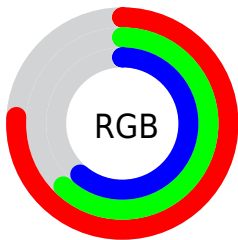
Format	Color
RYB	194, 157, 156
Decimal	12754332
CIELab	68.01, 13.54, 5.71
CIElCh	68, 14.695, 22.850
Yxy	37.9836, 0.3506, 0.3304
Android (android.graphics.Color)	4290944412 (0xFFC29D9C)
YUV	167.9490, -5.8909, 22.8467
Hunter-Lab	61.6308, 8.8830, 7.8742

Details

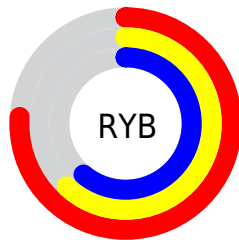
The YUV color $167.9490, -5.8909, 22.8467$ is a light color, and the websafe version is hex $CC9999$. A complement of this color would be $182.0510, 5.8909, -22.8467$, and the grayscale version is $168.0000, 0.0000, 0.0000$.

A 20% lighter version of the original color is $223.4330, -6.6225, 24.1763$, and $116.0520, -5.4486, 21.0024$ is the 20% darker color. If you saturate the color by 10%, you get $154.6300, -8.6916, 34.5275$, and if you desaturate by 10%, it is $181.2680, -3.0901, 11.1660$.

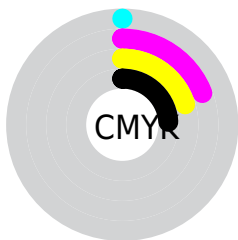
Distribution



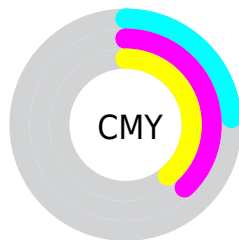
- Red (76%)
- Green (62%)
- Blue (61%)



- Red (76%)
- Yellow (62%)
- Blue (61%)



- Cyan (0%)
- Magenta (19%)
- Yellow (20%)
- Black (24%)



- Cyan (24%)
- Magenta (38%)
- Yellow (39%)

Brightness & Saturation Gradients

These gradients show how the YUV color 167.9490, -5.8909, 22.8467 changes by changing the brightness by 10 percent. The first figure shows a shift by +10% for each color and the second figure -10%.

Similar to the brightness gradients but the following saturation gradients show a change of the YUV color 167.9490, -5.8909, 22.8467 by changing the saturation by 10% instead.

■ 167.9490, -5.8909,
22.8467

■ 167.9490, -5.8909,
22.8467

255.0000, 0.0000,
0.0000

■ 141.6500, -5.7434,
22.2320

■ 223.4330, -6.6225,
24.1763

■ 116.0520, -5.4486,
21.0024

■ 244.3710, -2.6479,
9.3216

■ 90.8670, -4.8644,
20.2876

■ 67.2690, -4.5696,
19.0581

■ 44.6710, -4.2748,
17.8285

■ 23.6600, -4.2694,
16.0842

■ 3.8870, -1.9163,

7.9921

■ 0.0000, 0.0000,
0.0000

■ 167.9490, -5.8909,
22.8467

■ 167.9490, -5.8909,
22.8467

■ 154.6300, -8.6916,
34.5275

■ 181.2680, -3.0901,
11.1660

■ 141.1970,
-11.9291, 46.3082

■ 194.7010, 0.1474,
-0.6148

■ 127.8780,
-14.7299, 57.9890

■ 208.0200, 2.9481,
-12.2955

■ 114.4450,
-17.9674, 69.7697

■ 221.4530, 6.1857,
-24.0763

■ 101.7130,
-21.0575, 80.9357

■ 234.1850, 9.2758,
-35.2422

■ 88.3940, -23.8582,
92.6165

■ 236.7610, 8.9918,
-37.5014

■ 74.9610, -27.0958,
104.3972

■ 61.6420, -29.8965,
116.0780

■ 60.9410, -30.0439,
116.6927

Harmonies

Analogous

The Analogous color harmony consists of three colors that are next to each other on the color wheel.



168.5340, 0.2297, 19.7027



167.9490, -5.8909, 22.8467



167.2600, -10.9742, 19.9430

Triad

The Triadic color harmony groups three colors that are evenly spaced from another and form a triangle on the color wheel.



167.9490, -5.8909, 22.8467



162.2130, -6.5140, -10.7108



164.4570, 13.5787, -15.3098

Complementary

The Complementary color scheme is a pair of colors which are on the opposite of each other on the color wheel.



167.9490, -5.8909, 22.8467



182.0510, 5.8909, -22.8467

Split Complementary

Split-complementary colors differ from the complementary color scheme. The scheme consists of three colors, the original color and two neighbors of the complement color.



161.9460, 11.8586, -23.6316



167.9490, -5.8909, 22.8467



160.9820, 0.5019, -21.0322

Square

The Square scheme is like the rectangle color scheme, but the four colors are evenly spaced on the color wheel.



167.9490, -5.8909, 22.8467



164.0250, -11.3513, 0.8551



160.6700, 7.0647, -26.0206



166.3770, 11.6461, -2.0846

Rectangle

The Rectangle color scheme consists of four colors that form a rectangle on the color wheel.



167.9490, -5.8909, 22.8467



166.1840, -12.4157, 15.6246



160.6700, 7.0647, -26.0206



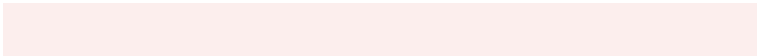
163.4350, 13.5895, -18.7985

Sweetspot

The Sweet Spot groups the original color and five complimentary colors.



167.9490, -5.8909, 22.8467



242.0720, -2.5005, 8.7069



171.5800, 10.5601, 19.6623



121.6910, -1.3267, 5.5330



0.0000, 0.0000, 0.0000



128.0000, 0.0000, 0.0000

Same Dimension

The Same Dimension uses a secret algorithm to generate beautiful new colors.



167.9490, -5.8909, 22.8467



210.5270, -9.1338, 36.3718



179.1020, -11.3893, 13.0655



89.9900, -1.4741, 6.1478



50.4870, -24.8901, 96.9199



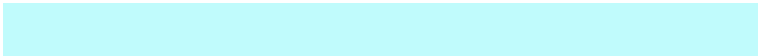
10.4540, -5.1538, 19.7728

Inverse Universe

The Inverse Universe completely reimagines the original color for something new.



182.0510, 5.8909, -22.8467



233.4730, 9.1338, -36.3718



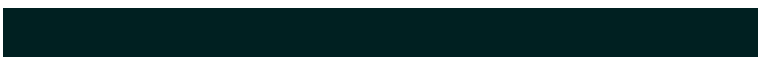
170.8980, 11.3893, -13.0655



94.0100, 1.4741, -6.1478



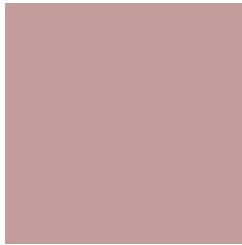
109.9260, 25.1795, -96.4051



22.5460, 5.1538, -19.7728

Previews

White Background



This preview shows how the YUV color 167.9490, -5.8909, 22.8467 looks on a white background.

Color Contrast Check

Large Text (above 18pt) WCAG AA × Fail

Any Text WCAG AA × Fail

Large Text (above 18pt) WCAG AAA × Fail

Any Text WCAG AAA × Fail

Black Background



This preview shows how the YUV color 167.9490, -5.8909, 22.8467 looks on a black background.

Color Contrast Check

Large Text (above 18pt) WCAG AA ✓ Pass

Any Text WCAG AA ✓ Pass

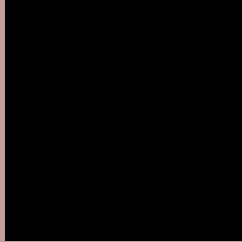
Large Text (above 18pt) WCAG AAA ✓ Pass

Any Text WCAG AAA ✓ Pass

If you want to check with other color combinations, try the [Color Contrast Checker](#).

YUV 167.9490, -5.8909, 22.8467

Background



This preview shows how black text looks on a background with the YUV color 167.9490, -5.8909, 22.8467.



This preview shows how white text looks on a background with the YUV color 167.9490, -5.8909,

Color Blindness Simulation

Color vision deficiency is a very complex topic, and I could not describe the different causes any better than Wikipedia does, so if you want to learn more, you should check out their [article about color blindness](#).

Dichromacy



Original Color

167.9490, -5.8909, 22.8467

Protanopia

166.0390, -2.4842, 3.4738

Deuteranopia

167.2040, -6.0166, 16.4841



Tritanopia

168.3280, -0.6547, 23.3913

Trichromacy



Original Color

167.9490, -5.8909, 22.8467

Protanomaly

166.7410, -3.8163, 10.7511

Deuteranomaly

167.5140, -6.1694, 18.8432

Tritanomaly

168.4590, -2.6913, 23.2765

Monochromacy



Original Color

167.9490, -5.8909, 22.8467

Achromatopsia

168.0000, 0.0000, 0.0000

Achromatomaly

167.8870, -1.9163, 7.9921

CSS Examples

Text

The CSS property to change the color of the text to YUV 167.9490, -5.8909, 22.8467 is called "color". The color property can be set on classes, ids or directly on the HTML element.

This example shows how text in the color `rgb(194, 157, 156)` looks like.

```
.text, #text, p{  
    color:rgb(194, 157, 156)  
}
```

If you want to add a text shadow in that color use the text-shadow property, you can generate a text shadow directly with our [CSS Text Shadow Generator](#).

Here you see how black text with a 4 pixel rgb(194, 157, 156) colored shadow looks like.

```
.shadow{ text-shadow: 4px 4px 2px rgb(194, 157, 156) }
```

Border

The CSS property to change the border of an element to YUV 167.9490, -5.8909, 22.8467 is called "border". The border property can be set on classes, ids or directly on the HTML element.

This example shows the color as border, it can be applied via the CSS property "border" or "border-color".

```
.border, #border, table{ border:4px solid rgb(194, 157, 156) }
```


If only the border color should be changed use the property `border-color`.

```
.border{ border-color:rgb(194, 157, 156) }
```

If you want to add a box shadow in that color use:

Here you see how a box with a 4 pixel `rgb(194, 157, 156)` colored shadow looks like.

```
.boxshadow{ -moz-box-shadow:4px 4px 4px  
4px rgb(194, 157, 156); -webkit-box-  
shadow:4px 4px 4px 4px rgb(194, 157, 156);  
box-shadow:4px 4px 4px 4px rgb(194, 157,  
156) }
```

Background

The CSS property to change the background color of an element to YUV 167.9490, -5.8909, 22.8467 is called "background". The background property can be set on classes, ids or directly on the HTML element.

```
.background, #background, body{  
background: rgb(194, 157, 156) }
```

If only the background color should be changed can be used:

```
.background{ background-color: rgb(194,  
157, 156) }
```

This example shows the color as background, it is applied via the CSS property "background".

To optimize and compress your CSS code, you can use our [online CSS compressor and optimizer](#) based on csstidy. If you want to create a linear or radial gradient as background or border, check our [CSS Gradient Generator](#).

Hey! You found this booklet interesting? Support Converting Colors with the new Membership Option!

The pro membership hides all ads, plus gives you double the colors in the color bucket, and more awesome pro features!

[Learn more, Memberships starting at \\$2.50/m!](#)

**Follow me
on Twitter!**

@ConvertingColor