

Converting Colors

YUV(168.0300, -18.7488,
40.3157)

Have a look what the booklet for
YUV(168.0300, -18.7488, 40.3157)
contains.

YUV(168.0300, -18.7488, 40.3157)	3
<i>Conversions</i>	4
<i>Details</i>	6
<i>Harmonies</i>	12
<i>Previews</i>	24
<i>Color Blindness Simulation</i>	28
<i>CSS Examples</i>	31

Color

**YUV(168.0300, -18.7488,
40.3157)**

Conversions

Conversions Part 1

Format	Color
Hex	D69882
RGB	214, 152, 130
RGB Percent	84%, 60%, 51%
CMY	0.1608, 0.4039, 0.4902
CMYK	0.00, 0.29, 0.39, 0.16
HSL	16°, 51%, 67%
HSV	16°, 39%, 84%
XYZ	42.9891, 38.3643, 26.2584
YIQ	168.0300, 44.0140, 6.3020

Conversions

Conversions Part 2

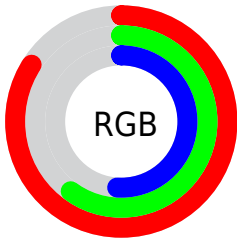
Format	Color
R _Y B	214, 160, 130
Decimal	14063746
CIE Lab	68.29, 20.49, 20.84
CIE LCh	68, 29.224, 45.475
Yxy	38.3643, 0.3995, 0.3565
Android (android.graphics.Color)	4292253826 (0xFFD69882)
YUV	168.0300, -18.7488, 40.3157
Hunter-Lab	61.9389, 15.4958, 18.2219

Details

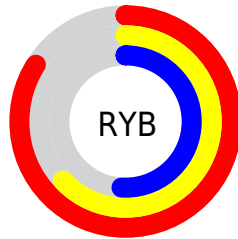
The YUV color **168.0300, -18.7488, 40.3157** is a light color, and the websafe version is hex **CC9999**. A complement of this color would be **175.9700, 18.7488, -40.3157**, and the grayscale version is **168.0000, 0.0000, 0.0000**.

A 20% lighter version of the original color is **218.6160, -17.5587, 31.9088**, and **115.4640, -16.9908, 36.4271** is the 20% darker color. If you saturate the color by 10%, you get **156.2440, -23.2913, 50.6520**, and if you desaturate by 10%, it is **179.8160, -14.2063, 29.9794**.

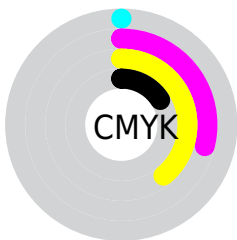
Distribution



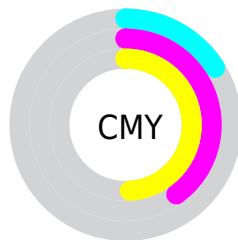
- Red (84%)
- Green (60%)
- Blue (51%)



- Red (84%)
- Yellow (63%)
- Blue (51%)



- Cyan (0%)
- Magenta (29%)
- Yellow (39%)
- Black (16%)



- Cyan (16%)
- Magenta (40%)
- Yellow (49%)

Brightness & Saturation Gradients

These gradients show how the YUV color 168.0300, -18.7488, 40.3157 changes by changing the brightness by 10 percent. The first figure shows a shift by +10% for each color and the second figure -10%.

Similar to the brightness gradients but the following saturation gradients show a change of the YUV color 168.0300, -18.7488, 40.3157 by changing the saturation by 10% instead.

■ 168.0300,
-18.7488, 40.3157

■ 168.0300,
-18.7488, 40.3157

■ 255.0000, 0.0000,
0.0000

■ 141.2470,
-17.8698, 38.3714

■ 218.6160,
-17.5587, 31.9088

■ 115.4640,
-16.9908, 36.4271

■ 238.2440,
-13.4313, 14.6950

■ 89.9800, -16.2591,
35.0975

■ 253.1760, -6.9888,
1.5996

■ 66.0120, -14.7959,
32.4385

■ 42.9300, -13.7695,
29.8794

■ 20.8310, -10.2697,
27.3352

■ 7.8880, -3.3958,

15.8842

■ 0.0000, 0.0000,
0.0000

■ 168.0300,
-18.7488, 40.3157

■ 168.0300,
-18.7488, 40.3157

■ 156.2440,
-23.2913, 50.6520

■ 179.8160,
-14.2063, 29.9794

■ 144.3440,
-28.2706, 61.0883

■ 191.7160, -9.2270,
19.5431

■ 133.1450,
-33.1025, 70.9098

■ 202.9150, -4.3951,
9.7215

■ 121.2450,
-38.0818, 81.3461

■ 214.8150, 0.5842,
-0.7148

■ 109.4590,
-42.6243, 91.6825

■ 226.6010, 5.1267,
-11.0511

■ 97.6730, -47.1668,
102.0188

■ 238.0450, 8.3588,
-21.0875

■ 96.8580, -47.7510,
102.7335

■ 242.7410, 6.0437,
-25.2059

Harmonies

Analogous

The Analogous color harmony consists of three colors that are next to each other on the color wheel.



169.6250, -7.7031, 44.1789



168.0300, -18.7488, 40.3157



166.0470, -24.6732, 27.1458

Triad

The Triadic color harmony groups three colors that are evenly spaced from another and form a triangle on the color wheel.



168.0300, -18.7488, 40.3157



156.1770, -2.0593, -39.6202



166.4540, 24.9192, -12.6762

Complementary

The Complementary color scheme is a pair of colors which are on the opposite of each other on the color wheel.



168.0300, -18.7488, 40.3157



175.9700, 18.7488, -40.3157

Split Complementary

Split-complementary colors differ from the complementary color scheme. The scheme consists of three colors, the original color and two neighbors of the complement color.



160.3750, 27.9161, -40.6709



168.0300, -18.7488, 40.3157



152.7800, 13.4195, -57.6891

Square

The Square scheme is like the rectangle color scheme, but the four colors are evenly spaced on the color wheel.



168.0300, -18.7488, 40.3157



160.1770, -15.3703, -16.8182



153.6300, 24.3394, -60.1885



170.1540, 16.6861, 14.7739

Rectangle

The Rectangle color scheme consists of four colors that form a rectangle on the color wheel.



168.0300, -18.7488, 40.3157



164.2580, -24.7772, 13.8057



153.6300, 24.3394, -60.1885



164.5560, 26.8409, -22.4126

Sweetspot

The Sweet Spot groups the original color and five complimentary colors.



168.0300, -18.7488, 40.3157



237.9650, -6.8847, 14.9397



162.2980, 15.1361, 45.3427



117.7300, -3.8109, 9.0068



0.0000, 0.0000, 0.0000



128.0000, 0.0000, 0.0000

Same Dimension

The Same Dimension uses a secret algorithm to generate beautiful new colors.



168.0300, -18.7488, 40.3157



189.6640, -26.9494, 57.2997



192.0970, -30.6138, 19.2089



101.0500, -2.4896, 5.2182



77.5440, -38.2292, 81.9609



19.3140, -9.5218, 20.7726

Inverse Universe

The Inverse Universe completely reimagines the original color for something new.



175.9700, 18.7488, -40.3157



200.9230, 26.6600, -57.8145



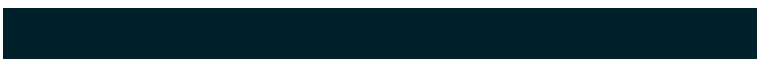
151.9030, 30.6138, -19.2089



101.9500, 2.4897, -5.2181



93.4560, 38.2292, -81.9609



23.6860, 9.5218, -20.7726

Previews

White Background



This preview shows how the YUV color 168.0300, -18.7488, 40.3157 looks on a white background.

Color Contrast Check

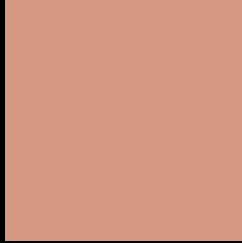
Large Text (above 18pt) WCAG AA × Fail

Any Text WCAG AA × Fail

Large Text (above 18pt) WCAG AAA × Fail

Any Text WCAG AAA × Fail

Black Background



This preview shows how the YUV color 168.0300, -18.7488, 40.3157 looks on a black background.

Color Contrast Check

Large Text (above 18pt) WCAG AA ✓ Pass

Any Text WCAG AA ✓ Pass

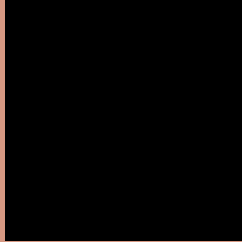
Large Text (above 18pt) WCAG AAA ✓ Pass

Any Text WCAG AAA ✓ Pass

If you want to check with other color combinations, try the [Color Contrast Checker](#).

YUV 168.0300, -18.7488, 40.3157

Background



This preview shows how black text looks on a background with the YUV color 168.0300, -18.7488, 40.3157.



This preview shows how white text looks on a background with the YUV color 168.0300, -18.7488, 40.3157.

Color Blindness Simulation

Color vision deficiency is a very complex topic, and I could not describe the different causes any better than Wikipedia does, so if you want to learn more, you should check out their [article about color blindness](#).

Dichromacy



Original Color

168.0300, -18.7488, 40.3157

Protanopia

165.9830, -14.2886, 9.6619

Deuteranopia

167.1160, -19.2842, 25.3313



Tritanopia

169.8850, -5.3663, 41.3199

Trichromacy



Original Color

168.0300, -18.7488, 40.3157

Protanomaly

166.5930, -16.0683, 20.5279

Deuteranomaly

167.5620, -19.0111, 31.0791

Tritanomaly

168.9190, -10.3131, 41.2900

Monochromacy



Original Color

168.0300, -18.7488, 40.3157

Achromatopsia

168.0000, 0.0000, 0.0000

Achromatomaly

167.9650, -6.8847, 14.9397

CSS Examples

Text

The CSS property to change the color of the text to YUV 168.0300, -18.7488, 40.3157 is called "color". The color property can be set on classes, ids or directly on the HTML element.

This example shows how text in the color `rgb(214, 152, 130)` looks like.

```
.text, #text, p{  
    color:rgb(214, 152, 130)  
}
```

If you want to add a text shadow in that color use the text-shadow property, you can generate a text shadow directly with our [CSS Text Shadow Generator](#).

Here you see how black text with a 4 pixel rgb(214, 152, 130) colored shadow looks like.

```
.shadow{ text-shadow: 4px 4px 2px rgb(214, 152, 130) }
```

Border

The CSS property to change the border of an element to YUV 168.0300, -18.7488, 40.3157 is called "border".

The border property can be set on classes, ids or directly on the HTML element.

This example shows the color as border, it can be applied via the CSS property "border" or "border-color".

```
.border, #border, table{ border:4px solid rgb(214, 152, 130) }
```


If only the border color should be changed use the property `border-color`.

```
.border{ border-color:rgb(214, 152, 130) }
```

If you want to add a box shadow in that color use:

Here you see how a box with a 4 pixel `rgb(214, 152, 130)` colored shadow looks like.

```
.boxshadow{ -moz-box-shadow:4px 4px 4px  
4px rgb(214, 152, 130); -webkit-box-  
shadow:4px 4px 4px 4px rgb(214, 152, 130);  
box-shadow:4px 4px 4px 4px rgb(214, 152,  
130) }
```

Background

The CSS property to change the background color of an element to YUV 168.0300, -18.7488, 40.3157 is called "background". The background property can be set on classes, ids or directly on the HTML element.

```
.background, #background, body{  
background: rgb(214, 152, 130) }
```

If only the background color should be changed can be used:

```
.background{ background-color: rgb(214,  
152, 130) }
```

This example shows the color as background, it is applied via the CSS property "background".

To optimize and compress your CSS code, you can use our [online CSS compressor and optimizer](#) based on csstidy. If you want to create a linear or radial gradient as background or border, check our [CSS Gradient Generator](#).

Hey! You found this booklet interesting? Support Converting Colors with the new Membership Option!

The pro membership hides all ads, plus gives you double the colors in the color bucket, and more awesome pro features!

[Learn more, Memberships starting at \\$2.50/m!](#)

**Follow me
on Twitter!**

@ConvertingColor