

Converting Colors

YUV(168.0740, -5.4595,
24.4911)

Have a look what the booklet for
YUV(168.0740, -5.4595, 24.4911)
contains.

YUV(168.0740, -5.4595, 24.4911)	3
<i>Conversions</i>	4
<i>Details</i>	6
<i>Harmonies</i>	12
<i>Previews</i>	24
<i>Color Blindness Simulation</i>	28
<i>CSS Examples</i>	31

Color

**YUV(168.0740, -5.4595,
24.4911)**

Conversions

Conversions Part 1

Format	Color
Hex	C49C9D
RGB	196, 156, 157
RGB Percent	77%, 61%, 62%
CMY	0.2314, 0.3882, 0.3843
CMYK	0.00, 0.20, 0.20, 0.23
HSL	358°, 25%, 69%
HSV	358°, 20%, 77%
XYZ	40.7392, 37.9470, 37.0756
YIQ	168.0740, 23.5190, 8.7910

Conversions

Conversions Part 2

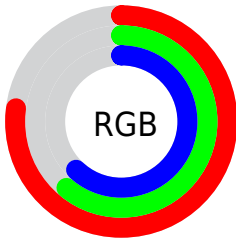
Format	Color
RYB	196, 156, 157
Decimal	12885149
CIELab	67.98, 15.00, 5.14
CIELCh	68, 15.854, 18.901
Yxy	37.9470, 0.3519, 0.3278
Android (android.graphics.Color)	4291075229 (0xFFC49C9D)
YUV	168.0740, -5.4595, 24.4911
Hunter-Lab	61.6012, 10.2469, 7.4362

Details

The YUV color **168.0740, -5.4595, 24.4911** is a light color, and the websafe version is hex **CC9999**. A complement of this color would be **183.9260, 5.4595, -24.4911**, and the grayscale version is **168.0000, 0.0000, 0.0000**.

A 20% lighter version of the original color is **223.6720, -5.7543, 25.7207**, and **116.1770, -5.0173, 22.6468** is the 20% darker color. If you saturate the color by 10%, you get **154.1680, -7.9708, 36.6867**, and if you desaturate by 10%, it is **181.9800, -2.9481, 12.2955**.

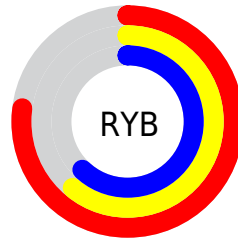
Distribution



Red (77%)

Green (61%)

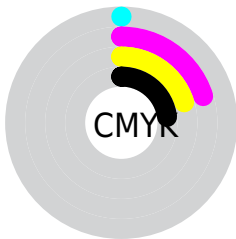
Blue (62%)



Red (77%)

Yellow (61%)

Blue (62%)

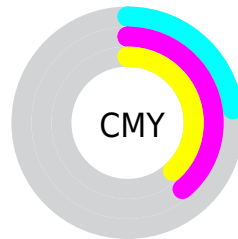


Cyan (0%)

Magenta (20%)

Yellow (20%)

Black (23%)



Cyan (23%)


Magenta (39%)


Yellow (38%)

Brightness & Saturation Gradients

These gradients show how the YUV color 168.0740, -5.4595, 24.4911 changes by changing the brightness by 10 percent. The first figure shows a shift by +10% for each color and the second figure -10%.

Similar to the brightness gradients but the following saturation gradients show a change of the YUV color 168.0740, -5.4595, 24.4911 by changing the saturation by 10% instead.


 168.0740, -5.4595,
24.4911

 168.0740, -5.4595,
24.4911


255.0000, 0.0000,
0.0000


 141.4760, -5.1647,
23.2615


 223.6720, -5.7543,
25.7207


 116.1770, -5.0173,
22.6468

 243.8980, -1.9217,
9.7365

 90.9920, -4.4331,
21.9320

 67.0950, -3.9908,
20.0877

 44.4970, -3.6960,
18.8581

 23.4860, -3.6906,
17.1138

 4.7840, -2.3585,

9.8364

0.0000, 0.0000,
0.0000

168.0740, -5.4595,
24.4911

168.0740, -5.4595,
24.4911

154.1680, -7.9708,
36.6867

181.9800, -2.9481,
12.2955

140.8490,
-10.7716, 48.3674

195.2990, -0.1474,
0.6148

126.9430,
-13.2829, 60.5630

209.2050, 2.3639,
-11.5808

113.6240,
-16.0836, 72.2438

222.5240, 5.1647,
-23.2615

99.6040, -19.0318,
84.5393

236.5440, 8.1128,
-35.5571

■ 85.6980, -21.5431,
96.7349

■ 237.3590, 8.6970,
-36.2718

■ 72.3790, -24.3438,
108.4156

■ 59.1740, -26.7078,
119.9964

Harmonies

Analogous

The Analogous color harmony consists of three colors that are next to each other on the color wheel.



168.2890, 1.8295, 19.9175



168.0740, -5.4595, 24.4911



167.5700, -11.1270, 22.3021

Triad

The Triadic color harmony groups three colors that are evenly spaced from another and form a triangle on the color wheel.



168.0740, -5.4595, 24.4911



162.2840, -7.5350, -9.8961



163.9620, 14.3157, -18.3837

Complementary

The Complementary color scheme is a pair of colors which are on the opposite of each other on the color wheel.



168.0740, -5.4595, 24.4911



183.9260, 5.4595, -24.4911

Split Complementary

Split-complementary colors differ from the complementary color scheme. The scheme consists of three colors, the original color and two neighbors of the complement color.



161.4510, 12.5957, -26.7055



168.0740, -5.4595, 24.4911



161.0420, -0.5137, -21.9618

Square

The Square scheme is like the rectangle color scheme, but the four colors are evenly spaced on the color wheel.



168.0740, -5.4595, 24.4911



164.3950, -12.5197, 2.2846



160.2460, 6.7807, -28.2797



166.7080, 12.9620, -4.1289

Rectangle

The Rectangle color scheme consists of four colors that form a rectangle on the color wheel.



168.0740, -5.4595, 24.4911



165.9670, -13.2947, 17.5689



160.2460, 6.7807, -28.2797



162.9400, 14.3266, -21.8724

Sweetspot

The Sweet Spot groups the original color and five complimentary colors.



168.0740, -5.4595, 24.4911



244.4850, -2.2111, 9.2217



172.2210, 11.7230, 19.9772



121.6910, -1.3267, 5.5330



0.0000, 0.0000, 0.0000



128.0000, 0.0000, 0.0000

Same Dimension

The Same Dimension uses a secret algorithm to generate beautiful new colors.



168.0740, -5.4595, 24.4911



212.3530, -8.5550, 37.4014



179.1130, -11.3947, 14.8099



89.9900, -1.4741, 6.1478



48.5950, -21.9853, 98.5792



9.9810, -4.4276, 20.1877

Inverse Universe

The Inverse Universe completely reimagines the original color for something new.



168.0740, -5.4595, 24.4911



212.3530, -8.5550, 37.4014



172.8870, 11.3947, -14.8099



89.9900, -1.4741, 6.1478



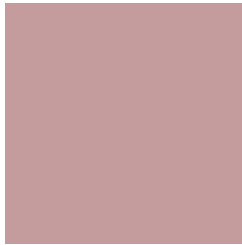
48.5950, -21.9853, 98.5792



9.9810, -4.4276, 20.1877

Previews

White Background



This preview shows how the YUV color 168.0740, -5.4595, 24.4911 looks on a white background.

Color Contrast Check

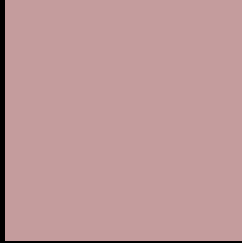
Large Text (above 18pt) WCAG AA × Fail

Any Text WCAG AA × Fail

Large Text (above 18pt) WCAG AAA × Fail

Any Text WCAG AAA × Fail

Black Background



This preview shows how the YUV color 168.0740, -5.4595, 24.4911 looks on a black background.

Color Contrast Check

Large Text (above 18pt) WCAG AA ✓ Pass

Any Text WCAG AA ✓ Pass

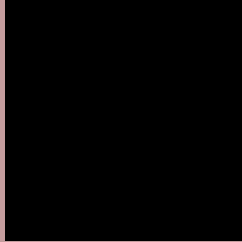
Large Text (above 18pt) WCAG AAA ✓ Pass

Any Text WCAG AAA ✓ Pass

If you want to check with other color combinations, try the [Color Contrast Checker](#).

YUV 168.0740, -5.4595, 24.4911

Background



This preview shows how black text looks on a background with the YUV color 168.0740, -5.4595, 24.4911.



This preview shows how white text looks on a background with the YUV color 168.0740, -5.4595,

Color Blindness Simulation

Color vision deficiency is a very complex topic, and I could not describe the different causes any better than Wikipedia does, so if you want to learn more, you should check out their [article about color blindness](#).

Dichromacy



Original Color

168.0740, -5.4595, 24.4911

Protanopia

166.1530, -2.0474, 3.3738

Deuteranopia

167.3180, -5.5798, 16.3841



Tritanopia

168.8120, -1.3863, 24.7209

Trichromacy



Original Color

168.0740, -5.4595, 24.4911

Protanomaly

166.8550, -3.3795, 10.6512

Deuteranomaly

167.9270, -5.8800, 19.3580

Tritanomaly

168.4700, -2.6967, 25.0208

Monochromacy



Original Color

168.0740, -5.4595, 24.4911

Achromatopsia

168.0000, 0.0000, 0.0000

Achromatomaly

168.1860, -2.0637, 8.6069

CSS Examples

Text

The CSS property to change the color of the text to YUV 168.0740, -5.4595, 24.4911 is called "color". The color property can be set on classes, ids or directly on the HTML element.

This example shows how text in the color `rgb(196, 156, 157)` looks like.

```
.text, #text, p{  
    color:rgb(196, 156, 157)  
}
```

If you want to add a text shadow in that color use the text-shadow property, you can generate a text shadow directly with our [CSS Text Shadow Generator](#).

Here you see how black text with a 4 pixel rgb(196, 156, 157) colored shadow looks like.

```
.shadow{ text-shadow: 4px 4px 2px rgb(196, 156, 157) }
```

Border

The CSS property to change the border of an element to YUV 168.0740, -5.4595, 24.4911 is called "border". The border property can be set on classes, ids or directly on the HTML element.

This example shows the color as border, it can be applied via the CSS property "border" or "border-color".

```
.border, #border, table{ border:4px solid rgb(196, 156, 157) }
```


If only the border color should be changed use the property `border-color`.

```
.border{ border-color:rgb(196, 156, 157) }
```

If you want to add a box shadow in that color use:

Here you see how a box with a 4 pixel `rgb(196, 156, 157)` colored shadow looks like.

```
.boxshadow{ -moz-box-shadow:4px 4px 4px  
4px rgb(196, 156, 157); -webkit-box-  
shadow:4px 4px 4px 4px rgb(196, 156, 157);  
box-shadow:4px 4px 4px 4px rgb(196, 156,  
157) }
```

Background

The CSS property to change the background color of an element to YUV 168.0740, -5.4595, 24.4911 is called "background". The background property can be set on classes, ids or directly on the HTML element.

```
.background, #background, body{  
background: rgb(196, 156, 157) }
```

If only the background color should be changed can be used:

```
.background{ background-color: rgb(196,  
156, 157) }
```

This example shows the color as background, it is applied via the CSS property "background".

To optimize and compress your CSS code, you can use our [online CSS compressor and optimizer](#) based on csstidy. If you want to create a linear or radial gradient as background or border, check our [CSS Gradient Generator](#).

Hey! You found this booklet interesting? Support Converting Colors with the new Membership Option!

The pro membership hides all ads, plus gives you double the colors in the color bucket, and more awesome pro features!

[Learn more, Memberships starting at \\$2.50/m!](#)

**Follow me
on Twitter!**

@ConvertingColor