

Converting Colors

YUV(168.2900, -19.8630,
24.3017)

Have a look what the booklet for
YUV(168.2900, -19.8630, 24.3017)
contains.

YUV(168.2900, -19.8630, 24.3017)	3
<i>Conversions</i>	4
<i>Details</i>	6
<i>Harmonies</i>	12
<i>Previews</i>	24
<i>Color Blindness Simulation</i>	28
<i>CSS Examples</i>	31

Color

**YUV(168.2900, -19.8630,
24.3017)**

Conversions

Conversions Part 1

Format	Color
Hex	C4A280
RGB	196, 162, 128
RGB Percent	77%, 64%, 50%
CMY	0.2314, 0.3647, 0.4980
CMYK	0.00, 0.17, 0.35, 0.23
HSL	30°, 37%, 64%
HSV	30°, 35%, 77%
XYZ	39.5816, 39.1349, 25.8897
YIQ	168.2900, 31.1780, -3.3660

Conversions

Conversions Part 2

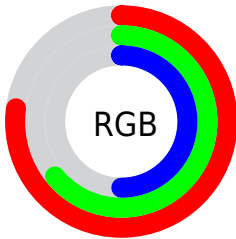
Format	Color
R _Y B	196, 196, 128
Decimal	12886656
CIE Lab	68.85, 7.66, 22.39
CIE LCh	69, 23.660, 71.122
Yxy	39.1349, 0.3784, 0.3741
Android (android.graphics.Color)	4291076736 (0xFFC4A280)
YUV	168.2900, -19.8630, 24.3017
Hunter-Lab	62.5579, 3.4639, 19.2533

Details

The YUV color $168.2900, -19.8630, 24.3017$ is a light color, and the websafe version is hex $CC9966$. A complement of this color would be $155.7100, 19.8630, -24.3017$, and the grayscale version is $168.0000, 0.0000, 0.0000$.

A 20% lighter version of the original color is $223.9590, -21.1788, 26.3460$, and $115.7350, -18.1104, 22.1574$ is the 20% darker color. If you saturate the color by 10%, you get $160.1400, -25.7050, 31.4492$, and if you desaturate by 10%, it is $176.4400, -14.0209, 17.1541$.

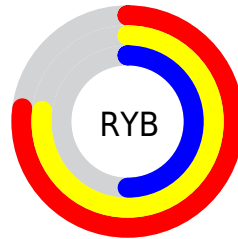
Distribution



Red (77%)

Green (64%)

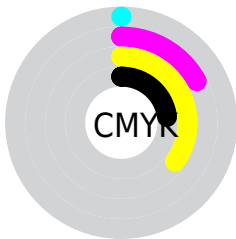
Blue (50%)



Red (77%)

Yellow (77%)

Blue (50%)

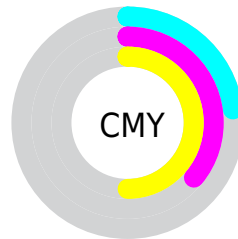


Cyan (0%)

Magenta (17%)

Yellow (35%)

Black (23%)



Cyan (23%)

Magenta (36%)

Yellow (50%)

Brightness & Saturation Gradients

These gradients show how the YUV color 168.2900, -19.8630, 24.3017 changes by changing the brightness by 10 percent. The first figure shows a shift by +10% for each color and the second figure -10%.

Similar to the brightness gradients but the following saturation gradients show a change of the YUV color 168.2900, -19.8630, 24.3017 by changing the saturation by 10% instead.

■ 168.2900,
-19.8630, 24.3017

■ 168.2900,
-19.8630, 24.3017

255.0000, 0.0000,
0.0000

■ 141.8060,
-19.1314, 22.9721

■ 223.9590,
-21.1788, 26.3460

■ 115.7350,
-18.1104, 22.1574

■ 243.8860,
-17.1988, 9.7470

■ 91.1370, -17.8155,
20.9279

■ 252.9480, -7.8624,
1.7996

■ 67.3540, -16.9365,
18.9835

■ 44.5710, -16.0575,
17.0392

■ 24.5860, -12.1209,
14.3951

■ 2.0930, -1.0318,

4.3034

0.0000, 0.0000,
0.0000

168.2900,
-19.8630, 24.3017

168.2900,
-19.8630, 24.3017

160.1400,
-25.7050, 31.4492

176.4400,
-14.0209, 17.1541

152.1040,
-31.1103, 38.4968

184.4760, -8.6157,
10.1065

144.5410,
-37.2417, 45.1295

192.0390, -2.4842,
3.4738

136.5050,
-42.6470, 52.1771

200.0750, 2.9210,
-3.5738

128.3550,
-48.4890, 59.3247

208.2250, 8.7631,
-10.7213

■ 120.2050,
-54.3311, 66.4722

■ 216.3750, 14.6051,
-17.8689

■ 116.1300,
-57.2521, 70.0460

■ 223.2710, 15.6424,
-23.9167

■ 228.5540, 13.0379,
-28.5499

■ 234.4240, 10.1440,
-33.6978

Harmonies

Analogous

The Analogous color harmony consists of three colors that are next to each other on the color wheel.



170.1370, -14.3645, 34.0829



168.2900, -19.8630, 24.3017



166.1910, -19.8142, 8.6025

Triad

The Triadic color harmony groups three colors that are evenly spaced from another and form a triangle on the color wheel.



168.2900, -19.8630, 24.3017



158.5000, 8.1345, -42.5345



170.8390, 14.3764, 8.9112

Complementary

The Complementary color scheme is a pair of colors which are on the opposite of each other on the color wheel.



168.2900, -19.8630, 24.3017



155.7100, 19.8630, -24.3017

Split Complementary

Split-complementary colors differ from the complementary color scheme. The scheme consists of three colors, the original color and two neighbors of the complement color.



167.7160, 20.8460, -12.9059



168.2900, -19.8630, 24.3017



158.7090, 17.8915, -45.3488

Square

The Square scheme is like the rectangle color scheme, but the four colors are evenly spaced on the color wheel.



168.2900, -19.8630, 24.3017



160.7870, -3.8390, -28.7542



163.2250, 22.0741, -33.5233



171.5440, 5.1548, 26.7099

Rectangle

The Rectangle color scheme consists of four colors that form a rectangle on the color wheel.



168.2900, -19.8630, 24.3017



164.3250, -16.4292, -3.7930



163.2250, 22.0741, -33.5233



170.1910, 17.1608, 2.4635

Sweetspot

The Sweet Spot groups the original color and five complimentary colors.



168.2900, -19.8630, 24.3017



244.5190, -7.1579, 9.1918



152.2080, 4.8275, 38.4056



121.4800, -4.6736, 5.7180



0.0000, 0.0000, 0.0000



128.0000, 0.0000, 0.0000

Same Dimension

The Same Dimension uses a secret algorithm to generate beautiful new colors.



168.2900, -19.8630, 24.3017



211.1040, -31.1103, 38.4968



187.6610, -29.4129, 7.3133



92.9250, -2.9210, 3.5738



95.0990, -46.8838, 57.7952



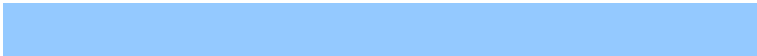
19.8460, -9.7841, 11.5361

Inverse Universe

The Inverse Universe completely reimagines the original color for something new.



155.7100, 19.8630, -24.3017



191.3090, 31.3997, -37.9820



135.7520, 29.7023, -6.7985



91.0750, 2.9210, -3.5738



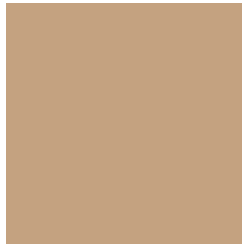
65.3140, 47.1732, -57.2804



13.7410, 9.4947, -12.0509

Previews

White Background



This preview shows how the YUV color 168.2900, -19.8630, 24.3017 looks on a white background.

Color Contrast Check

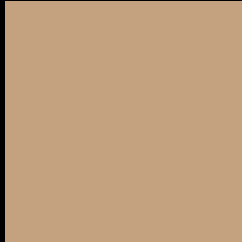
Large Text (above 18pt) WCAG AA × Fail

Any Text WCAG AA × Fail

Large Text (above 18pt) WCAG AAA × Fail

Any Text WCAG AAA × Fail

Black Background



This preview shows how the YUV color 168.2900, -19.8630, 24.3017 looks on a black background.

Color Contrast Check

Large Text (above 18pt) WCAG AA ✓ Pass

Any Text WCAG AA ✓ Pass

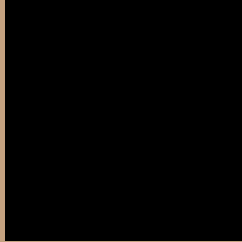
Large Text (above 18pt) WCAG AAA ✓ Pass

Any Text WCAG AAA ✓ Pass

If you want to check with other color combinations, try the [Color Contrast Checker](#).

YUV 168.2900, -19.8630, 24.3017

Background



This preview shows how black text looks on a background with the YUV color 168.2900, -19.8630, 24.3017.



This preview shows how white text looks on a background with the YUV color 168.2900, -19.8630,

Color Blindness Simulation

Color vision deficiency is a very complex topic, and I could not describe the different causes any better than Wikipedia does, so if you want to learn more, you should check out their [article about color blindness](#).

Dichromacy



Original Color

168.2900, -19.8630, 24.3017

Protanopia

167.0710, -17.7830, 10.4617

Deuteranopia

168.3010, -19.8684, 26.0460



Tritanopia

170.6380, -0.8075, 25.7505

Trichromacy



Original Color

168.2900, -19.8630, 24.3017

Protanomaly

167.5770, -18.5255, 15.2800

Deuteranomaly

168.0020, -19.7210, 25.4312

Tritanomaly

169.8030, -7.7909, 25.6058

Monochromacy



Original Color

168.2900, -19.8630, 24.3017

Achromatopsia

168.0000, 0.0000, 0.0000

Achromatomaly

168.1060, -7.4473, 8.6770

CSS Examples

Text

The CSS property to change the color of the text to YUV 168.2900, -19.8630, 24.3017 is called "color". The color property can be set on classes, ids or directly on the HTML element.

This example shows how text in the color `rgb(196, 162, 128)` looks like.

```
.text, #text, p{  
    color:rgb(196, 162, 128)  
}
```

If you want to add a text shadow in that color use the text-shadow property, you can generate a text shadow directly with our [CSS Text Shadow Generator](#).

Here you see how black text with a 4 pixel rgb(196, 162, 128) colored shadow looks like.

```
.shadow{ text-shadow: 4px 4px 2px rgb(196, 162, 128) }
```

Border

The CSS property to change the border of an element to YUV 168.2900, -19.8630, 24.3017 is called "border".

The border property can be set on classes, ids or directly on the HTML element.

This example shows the color as border, it can be applied via the CSS property "border" or "border-color".

```
.border, #border, table{ border:4px solid rgb(196, 162, 128) }
```


If only the border color should be changed use the property `border-color`.

```
.border{ border-color:rgb(196, 162, 128) }
```

If you want to add a box shadow in that color use:

Here you see how a box with a 4 pixel `rgb(196, 162, 128)` colored shadow looks like.

```
.boxshadow{ -moz-box-shadow:4px 4px 4px 4px rgb(196, 162, 128); -webkit-box-shadow:4px 4px 4px 4px rgb(196, 162, 128); box-shadow:4px 4px 4px 4px rgb(196, 162, 128) }
```

Background

The CSS property to change the background color of an element to YUV 168.2900, -19.8630, 24.3017 is called "background". The background property can be set on classes, ids or directly on the HTML element.

```
.background, #background, body{  
background: rgb(196, 162, 128) }
```

If only the background color should be changed can be used:

```
.background{ background-color: rgb(196,  
162, 128) }
```

This example shows the color as background, it is applied via the CSS property "background".

To optimize and compress your CSS code, you can use our [online CSS compressor and optimizer](#) based on csstidy. If you want to create a linear or radial gradient as background or border, check our [CSS Gradient Generator](#).

Hey! You found this booklet interesting? Support Converting Colors with the new Membership Option!

The pro membership hides all ads, plus gives you double the colors in the color bucket, and more awesome pro features!

[Learn more, Memberships starting at \\$2.50/m!](#)

**Follow me
on Twitter!**

@ConvertingColor