

Converting Colors

YUV(168.3050, -15.9264,
21.6575)

Have a look what the booklet for
YUV(168.3050, -15.9264, 21.6575)
contains.

YUV(168.3050, -15.9264, 21.6575)	3
<i>Conversions</i>	4
<i>Details</i>	6
<i>Harmonies</i>	12
<i>Previews</i>	24
<i>Color Blindness Simulation</i>	28
<i>CSS Examples</i>	31

Color

**YUV(168.3050, -15.9264,
21.6575)**

Conversions

Conversions Part 1

Format	Color
Hex	C1A288
RGB	193, 162, 136
RGB Percent	76%, 64%, 53%
CMY	0.2431, 0.3647, 0.4667
CMYK	0.00, 0.16, 0.30, 0.24
HSL	27°, 31%, 65%
HSV	27°, 30%, 76%
XYZ	39.3566, 38.9557, 28.7374
YIQ	168.3050, 26.8220, -1.5140

Conversions

Conversions Part 2

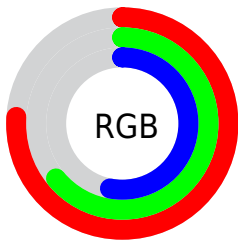
Format	Color
RYB	193, 184, 136
Decimal	12690056
CIELab	68.72, 7.51, 17.78
CIElCh	69, 19.297, 67.110
Yxy	38.9557, 0.3676, 0.3639
Android (android.graphics.Color)	4290880136 (0xFFC1A288)
YUV	168.3050, -15.9264, 21.6575
Hunter-Lab	62.4145, 3.3310, 16.3913

Details

The YUV color **168.3050, -15.9264, 21.6575** is a light color, and the websafe version is hex **CC9999**. A complement of this color would be **160.6950, 15.9264, -21.6575**, and the grayscale version is **168.0000, 0.0000, 0.0000**.

A 20% lighter version of the original color is **223.6750, -17.0948, 23.0870**, and **115.9350, -14.7580, 20.2280** is the 20% darker color. If you saturate the color by 10%, you get **160.2690, -21.3316, 28.7051**, and if you desaturate by 10%, it is **176.3410, -10.5211, 14.6099**.

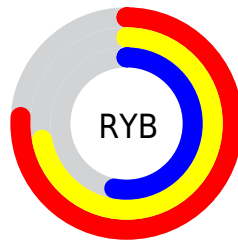
Distribution



Red (76%)

Green (64%)

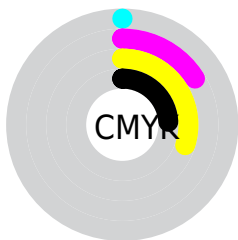
Blue (53%)



Red (76%)

Yellow (72%)

Blue (53%)

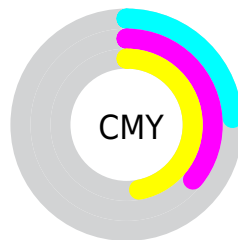


Cyan (0%)

Magenta (16%)

Yellow (30%)

Black (24%)



Cyan (24%)

Magenta (36%)

Yellow (47%)

Brightness & Saturation Gradients

These gradients show how the YUV color 168.3050, -15.9264, 21.6575 changes by changing the brightness by 10 percent. The first figure shows a shift by +10% for each color and the second figure -10%.

Similar to the brightness gradients but the following saturation gradients show a change of the YUV color 168.3050, -15.9264, 21.6575 by changing the saturation by 10% instead.

■ 168.3050,
-15.9264, 21.6575

■ 168.3050,
-15.9264, 21.6575

255.0000, 0.0000,
0.0000

■ 141.8210,
-15.1948, 20.3280

■ 223.6750,
-17.0948, 23.0870

■ 115.9350,
-14.7580, 20.2280

■ 244.7980,
-13.7044, 8.9472

■ 91.1520, -13.8789,
18.2837

■ 253.9740, -3.9312,
0.8998

■ 67.6680, -13.1473,
16.9542

■ 45.1840, -12.4157,
15.6246

■ 23.7000, -11.6841,
14.2951

■ 1.4950, -0.7370,

3.0739

0.0000, 0.0000,
0.0000

168.3050,
-15.9264, 21.6575

168.3050,
-15.9264, 21.6575

160.2690,
-21.3316, 28.7051

176.3410,
-10.5211, 14.6099

151.5320,
-26.8843, 36.3674

185.0780, -4.9685,
6.9476

143.4960,
-32.2895, 43.4150

193.1140, 0.4368,
-0.1000

134.8730,
-37.4054, 50.9774

201.7370, 5.5527,
-7.6623

126.7230,
-43.2474, 58.1249

209.8870, 11.3947,
-14.8099

■ 118.1000,
-48.3633, 65.6873

■ 218.5100, 16.5106,
-22.3723

■ 110.0640,
-53.7686, 72.7349

■ 224.7220, 14.9271,
-27.8202

■ 109.3630,
-53.9160, 73.3496

■ 231.1790, 11.7438,
-33.4830

■ 236.4620, 9.1392,
-38.1162

Harmonies

Analogous

The Analogous color harmony consists of three colors that are next to each other on the color wheel.



169.6140, -11.1487, 29.2795



168.3050, -15.9264, 21.6575



166.7010, -16.6146, 9.0322

Triad

The Triadic color harmony groups three colors that are evenly spaced from another and form a triangle on the color wheel.



168.3050, -15.9264, 21.6575



161.0560, 4.9024, -32.4981



169.9480, 12.3506, 5.3076

Complementary

The Complementary color scheme is a pair of colors which are on the opposite of each other on the color wheel.



168.3050, -15.9264, 21.6575



160.6950, 15.9264, -21.6575

Split Complementary

Split-complementary colors differ from the complementary color scheme. The scheme consists of three colors, the original color and two neighbors of the complement color.



167.3910, 17.0622, -12.6209



168.3050, -15.9264, 21.6575



161.2110, 13.2070, -36.1420

Square

The Square scheme is like the rectangle color scheme, but the four colors are evenly spaced on the color wheel.



168.3050, -15.9264, 21.6575



162.1300, -4.0081, -21.1620



163.7050, 17.4004, -27.8053



170.9130, 5.4659, 20.2473

Rectangle

The Rectangle color scheme consists of four colors that form a rectangle on the color wheel.



168.3050, -15.9264, 21.6575



164.9170, -14.2561, -0.8042



163.7050, 17.4004, -27.8053



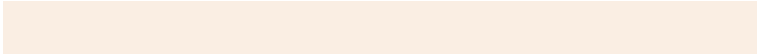
169.4850, 14.5509, -0.4253

Sweetspot

The Sweet Spot groups the original color and five complimentary colors.



168.3050, -15.9264, 21.6575



240.3340, -6.5737, 8.4771



156.5770, 5.1385, 31.9430



118.7080, -3.8000, 5.5181



252.0000, 0.0000, 0.0000



125.0000, 0.0000, 0.0000

Same Dimension

The Same Dimension uses a secret algorithm to generate beautiful new colors.



168.3050, -15.9264, 21.6575



211.7920, -24.5475, 33.5084



184.7410, -24.0293, 7.2431



92.9250, -2.9210, 3.5738



90.9900, -44.8581, 61.3988



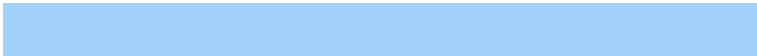
18.6720, -9.2053, 12.5657

Inverse Universe

The Inverse Universe completely reimagines the original color for something new.



160.6950, 15.9264, -21.6575



200.2080, 24.5475, -33.5084



144.2590, 24.0293, -7.2431



91.0750, 2.9210, -3.5738



69.4230, 45.1475, -60.8840



14.3280, 9.2053, -12.5657

Previews

White Background



This preview shows how the YUV color 168.3050, -15.9264, 21.6575 looks on a white background.

Color Contrast Check

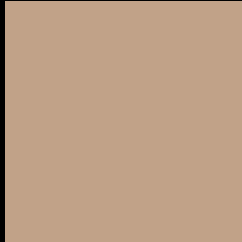
Large Text (above 18pt) WCAG AA × Fail

Any Text WCAG AA × Fail

Large Text (above 18pt) WCAG AAA × Fail

Any Text WCAG AAA × Fail

Black Background



This preview shows how the YUV color 168.3050, -15.9264, 21.6575 looks on a black background.

Color Contrast Check

Large Text (above 18pt) WCAG AA ✓ Pass

Any Text WCAG AA ✓ Pass

Large Text (above 18pt) WCAG AAA ✓ Pass

Any Text WCAG AAA ✓ Pass

If you want to check with other color combinations, try the [Color Contrast Checker](#).

YUV 168.3050, -15.9264, 21.6575

Background



This preview shows how black text looks on a background with the YUV color 168.3050, -15.9264, 21.6575.



This preview shows how white text looks on a background with the YUV color 168.3050, -15.9264, 21.6575.

Color Blindness Simulation

Color vision deficiency is a very complex topic, and I could not describe the different causes any better than Wikipedia does, so if you want to learn more, you should check out their [article about color blindness](#).

Dichromacy



Original Color

168.3050, -15.9264, 21.6575

Protanopia

166.7980, -13.7044, 8.9472

Deuteranopia

168.3160, -15.9318, 23.4019



Tritanopia

170.3280, -0.6547, 23.3913

Trichromacy



Original Color

168.3050, -15.9264, 21.6575

Protanomaly

167.3040, -14.4469, 13.7654

Deuteranomaly

168.0170, -15.7844, 22.7871

Tritanomaly

169.8350, -6.3277, 22.9467

Monochromacy



Original Color

168.3050, -15.9264, 21.6575

Achromatopsia

168.0000, 0.0000, 0.0000

Achromatomaly

168.1490, -5.9895, 7.7623

CSS Examples

Text

The CSS property to change the color of the text to YUV 168.3050, -15.9264, 21.6575 is called "color". The color property can be set on classes, ids or directly on the HTML element.

This example shows how text in the color `rgb(193, 162, 136)` looks like.

```
.text, #text, p{  
    color:rgb(193, 162, 136)  
}
```

If you want to add a text shadow in that color use the text-shadow property, you can generate a text shadow directly with our [CSS Text Shadow Generator](#).

Here you see how black text with a 4 pixel rgb(193, 162, 136) colored shadow looks like.

```
.shadow{ text-shadow: 4px 4px 2px rgb(193, 162, 136) }
```

Border

The CSS property to change the border of an element to YUV 168.3050, -15.9264, 21.6575 is called "border".

The border property can be set on classes, ids or directly on the HTML element.

This example shows the color as border, it can be applied via the CSS property "border" or "border-color".

```
.border, #border, table{ border:4px solid rgb(193, 162, 136) }
```


If only the border color should be changed use the property `border-color`.

```
.border{ border-color:rgb(193, 162, 136) }
```

If you want to add a box shadow in that color use:

Here you see how a box with a 4 pixel `rgb(193, 162, 136)` colored shadow looks like.

```
.boxshadow{ -moz-box-shadow:4px 4px 4px  
4px rgb(193, 162, 136); -webkit-box-  
shadow:4px 4px 4px 4px rgb(193, 162, 136);  
box-shadow:4px 4px 4px 4px rgb(193, 162,  
136) }
```

Background

The CSS property to change the background color of an element to YUV 168.3050, -15.9264, 21.6575 is called "background". The background property can be set on classes, ids or directly on the HTML element.

```
.background, #background, body{  
background: rgb(193, 162, 136) }
```

If only the background color should be changed can be used:

```
.background{ background-color: rgb(193,  
162, 136) }
```

This example shows the color as background, it is applied via the CSS property "background".

To optimize and compress your CSS code, you can use our [online CSS compressor and optimizer](#) based on csstidy. If you want to create a linear or radial gradient as background or border, check our [CSS Gradient Generator](#).

Hey! You found this booklet interesting? Support Converting Colors with the new Membership Option!

The pro membership hides all ads, plus gives you double the colors in the color bucket, and more awesome pro features!

[Learn more, Memberships starting at \\$2.50/m!](#)

**Follow me
on Twitter!**

@ConvertingColor