

Converting Colors

YUV(168.3070, -5.5744,
14.6398)

Have a look what the booklet for
YUV(168.3070, -5.5744, 14.6398)
contains.

YUV(168.3070, -5.5744, 14.6398)	3
<i>Conversions</i>	4
<i>Details</i>	6
<i>Harmonies</i>	12
<i>Previews</i>	24
<i>Color Blindness Simulation</i>	28
<i>CSS Examples</i>	31

Color

**YUV(168.3070, -5.5744,
14.6398)**

Conversions

Conversions Part 1

Format	Color
Hex	B9A29D
RGB	185, 162, 157
RGB Percent	73%, 64%, 62%
CMY	0.2745, 0.3647, 0.3843
CMYK	0.00, 0.12, 0.15, 0.27
HSL	11°, 17%, 67%
HSV	11°, 15%, 73%
XYZ	39.0137, 38.5893, 37.2905
YIQ	168.3070, 15.3130, 3.3210

Conversions

Conversions Part 2

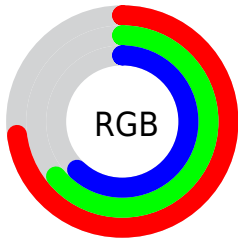
Format	Color
RYB	185, 163, 157
Decimal	12165789
CIELab	68.45, 7.57, 5.68
CIELCh	68, 9.462, 36.879
Yxy	38.5893, 0.3396, 0.3359
Android (android.graphics.Color)	4290355869 (0xFFB9A29D)
YUV	168.3070, -5.5744, 14.6398
Hunter-Lab	62.1203, 3.3938, 7.8927

Details

The YUV color **168.3070, -5.5744, 14.6398** is a light color, and the websafe version is hex **999999**. A complement of this color would be **173.6930, 5.5744, -14.6398**, and the grayscale version is **168.0000, 0.0000, 0.0000**.

A 20% lighter version of the original color is **223.6060, -5.7218, 15.2545**, and **116.1220, -4.9901, 13.9250** is the 20% darker color. If you saturate the color by 10%, you get **157.4500, -9.0958, 24.1614**, and if you desaturate by 10%, it is **179.2780, -1.6161, 5.0182**.

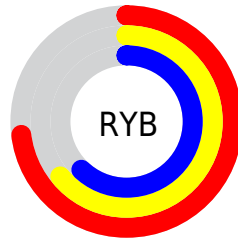
Distribution



Red (73%)

Green (64%)

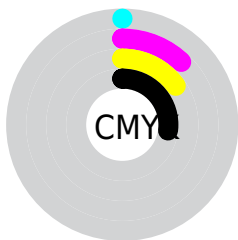
Blue (62%)



Red (73%)

Yellow (64%)

Blue (62%)

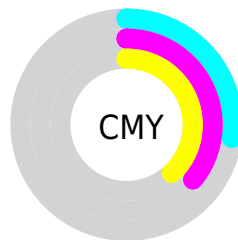


Cyan (0%)

Magenta (12%)

Yellow (15%)

Black (27%)



Cyan (27%)

Magenta (36%)

Yellow (38%)

Brightness & Saturation Gradients

These gradients show how the YUV color 168.3070, -5.5744, 14.6398 changes by changing the brightness by 10 percent. The first figure shows a shift by +10% for each color and the second figure -10%.

Similar to the brightness gradients but the following saturation gradients show a change of the YUV color 168.3070, -5.5744, 14.6398 by changing the saturation by 10% instead.

■ 168.3070, -5.5744,
14.6398

■ 168.3070, -5.5744,
14.6398

■ 255.0000, 0.0000,
0.0000

■ 142.0080, -5.4269,
14.0250

■ 223.6060, -5.7218,
15.2545

■ 116.1220, -4.9901,
13.9250

■ 247.4200, -3.6581,
6.6477

■ 91.5240, -4.6953,
12.6955

■ 68.2250, -4.5479,
12.0807

■ 45.6270, -4.2531,
10.8511

■ 24.3280, -4.1057,
10.2363

■ 0.5980, -0.2948,

1.2296

■ 0.0000, 0.0000,
0.0000

■ 168.3070, -5.5744,
14.6398

■ 168.3070, -5.5744,
14.6398

■ 157.4500, -9.0958,
24.1614

■ 179.2780, -1.6161,
5.0182

■ 146.4790,
-13.0541, 33.7829

■ 190.1350, 1.9054,
-4.5034

■ 135.0350,
-16.2863, 43.8193

■ 201.6930, 5.5744,
-14.6398

■ 124.0640,
-20.2446, 53.4409

■ 212.5500, 9.0959,
-24.1613

■ 113.2070,
-23.7661, 62.9625

■ 223.5210, 13.0541,
-33.7829

■ 102.2360,
-27.7243, 72.5840

■ 232.8960, 10.8973,
-42.0048

■ 91.3790, -31.2458,
82.1056

■ 234.0700, 10.3185,
-43.0344

■ 79.8210, -34.9148,
92.2420

■ 74.6860, -36.8202,
96.7454

Harmonies

Analogous

The Analogous color harmony consists of three colors that are next to each other on the color wheel.



168.6320, -1.7906, 14.3547



168.3070, -5.5744, 14.6398



167.3020, -8.0369, 11.1361

Triad

The Triadic color harmony groups three colors that are evenly spaced from another and form a triangle on the color wheel.



168.3070, -5.5744, 14.6398



164.3640, -2.1515, -9.9662



166.8450, 8.4574, -6.0031

Complementary

The Complementary color scheme is a pair of colors which are on the opposite of each other on the color wheel.



168.3070, -5.5744, 14.6398



173.6930, 5.5744, -14.6398

Split Complementary

Split-complementary colors differ from the complementary color scheme. The scheme consists of three colors, the original color and two neighbors of the complement color.



165.6870, 8.0423, -12.8805



168.3070, -5.5744, 14.6398



164.1830, 2.3748, -15.0695

Square

The Square scheme is like the rectangle color scheme, but the four colors are evenly spaced on the color wheel.



168.3070, -5.5744, 14.6398



165.6700, -6.2463, -3.2186



164.2090, 6.3060, -15.9693



168.0310, 6.3937, 2.6038

Rectangle

The Rectangle color scheme consists of four colors that form a rectangle on the color wheel.



168.3070, -5.5744, 14.6398



166.8670, -8.3154, 7.1326



164.2090, 6.3060, -15.9693



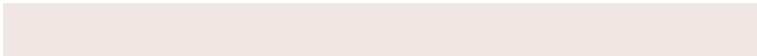
166.5350, 8.6102, -8.3622

Sweetspot

The Sweet Spot groups the original color and five complimentary colors.



168.3070, -5.5744, 14.6398



232.7620, -2.3477, 6.3477



167.9940, 5.9190, 14.9143



115.6800, -1.3212, 3.7886



247.0000, 0.0000, 0.0000



120.0000, 0.0000, 0.0000

Same Dimension

The Same Dimension uses a secret algorithm to generate beautiful new colors.



168.3070, -5.5744, 14.6398



213.9660, -8.3642, 22.8318



176.5250, -9.6258, 7.4326



86.2780, -1.6161, 5.0182



63.0800, -31.0984, 81.4908



11.3070, -5.5744, 14.6398

Inverse Universe

The Inverse Universe completely reimagines the original color for something new.



173.6930, 5.5744, -14.6398



222.4470, 8.6536, -22.3170



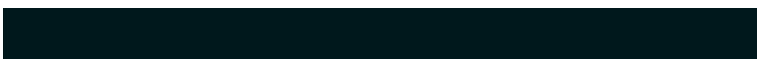
165.4750, 9.6258, -7.4326



88.1350, 1.9054, -4.5034



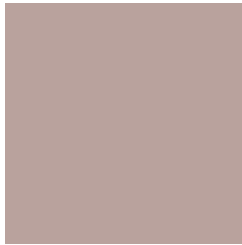
92.9200, 31.0984, -81.4908



16.6930, 5.5744, -14.6398

Previews

White Background



This preview shows how the YUV color 168.3070, -5.5744, 14.6398 looks on a white background.

Color Contrast Check

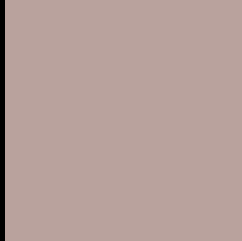
Large Text (above 18pt) WCAG AA × Fail

Any Text WCAG AA × Fail

Large Text (above 18pt) WCAG AAA × Fail

Any Text WCAG AAA × Fail

Black Background



This preview shows how the YUV color 168.3070, -5.5744, 14.6398 looks on a black background.

Color Contrast Check

Large Text (above 18pt) WCAG AA ✓ Pass

Any Text WCAG AA ✓ Pass

Large Text (above 18pt) WCAG AAA ✓ Pass

Any Text WCAG AAA ✓ Pass

If you want to check with other color combinations, try the [Color Contrast Checker](#).

YUV 168.3070, -5.5744, 14.6398

Background



This preview shows how black text looks on a background with the YUV color 168.3070, -5.5744, 14.6398.



This preview shows how white text looks on a background with the YUV color 168.3070, -5.5744,

Color Blindness Simulation

Color vision deficiency is a very complex topic, and I could not describe the different causes any better than Wikipedia does, so if you want to learn more, you should check out their [article about color blindness](#).

Dichromacy



Original Color

168.3070, -5.5744, 14.6398

Protanopia

166.9960, -3.9420, 4.3885

Deuteranopia

168.3180, -5.5798, 16.3841



Tritanopia

169.4410, 1.2616, 15.3992

Trichromacy



Original Color

168.3070, -5.5744, 14.6398

Protanomaly

167.7900, -4.8265, 8.0772

Deuteranomaly

168.0190, -5.4324, 15.7693

Tritanomaly

169.1590, -1.0644, 14.7696

Monochromacy



Original Color

168.3070, -5.5744, 14.6398

Achromatopsia

168.0000, 0.0000, 0.0000

Achromatomaly

168.1640, -2.0529, 5.1182

CSS Examples

Text

The CSS property to change the color of the text to YUV 168.3070, -5.5744, 14.6398 is called "color". The color property can be set on classes, ids or directly on the HTML element.

This example shows how text in the color `rgb(185, 162, 157)` looks like.

```
.text, #text, p{  
    color:rgb(185, 162, 157)  
}
```

If you want to add a text shadow in that color use the text-shadow property, you can generate a text shadow directly with our [CSS Text Shadow Generator](#).

Here you see how black text with a 4 pixel rgb(185, 162, 157) colored shadow looks like.

```
.shadow{ text-shadow: 4px 4px 2px rgb(185, 162, 157) }
```

Border

The CSS property to change the border of an element to YUV 168.3070, -5.5744, 14.6398 is called "border". The border property can be set on classes, ids or directly on the HTML element.

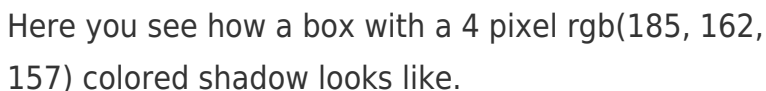
This example shows the color as border, it can be applied via the CSS property "border" or "border-color".

```
.border, #border, table{ border:4px solid rgb(185, 162, 157) }
```


If only the border color should be changed use the property `border-color`.

```
.border{ border-color:rgb(185, 162, 157) }
```

If you want to add a box shadow in that color use:



Here you see how a box with a 4 pixel `rgb(185, 162, 157)` colored shadow looks like.

```
.boxshadow{ -moz-box-shadow:4px 4px 4px  
4px rgb(185, 162, 157); -webkit-box-  
shadow:4px 4px 4px 4px rgb(185, 162, 157);  
box-shadow:4px 4px 4px 4px rgb(185, 162,  
157) }
```

Background

The CSS property to change the background color of an element to YUV 168.3070, -5.5744, 14.6398 is called "background". The background property can be set on classes, ids or directly on the HTML element.

```
.background, #background, body{  
background: rgb(185, 162, 157) }
```

If only the background color should be changed can be used:

```
.background{ background-color: rgb(185,  
162, 157) }
```

This example shows the color as background, it is applied via the CSS property "background".

To optimize and compress your CSS code, you can use our [online CSS compressor and optimizer](#) based on csstidy. If you want to create a linear or radial gradient as background or border, check our [CSS Gradient Generator](#).

Hey! You found this booklet interesting? Support Converting Colors with the new Membership Option!

The pro membership hides all ads, plus gives you double the colors in the color bucket, and more awesome pro features!

[Learn more, Memberships starting at \\$2.50/m!](#)

**Follow me
on Twitter!**

@ConvertingColor