

Converting Colors

YUV(168.3470, -2.6361,
52.3157)

Have a look what the booklet for
YUV(168.3470, -2.6361, 52.3157)
contains.

YUV(168.3470, -2.6361, 52.3157)	3
<i>Conversions</i>	4
<i>Details</i>	6
<i>Harmonies</i>	12
<i>Previews</i>	24
<i>Color Blindness Simulation</i>	28
<i>CSS Examples</i>	31

Color

**YUV(168.3470, -2.6361,
52.3157)**

Conversions

Conversions Part 1

Format	Color
Hex	E48BA3
RGB	228, 139, 163
RGB Percent	89%, 55%, 64%
CMY	0.1059, 0.4549, 0.3608
CMYK	0.00, 0.39, 0.29, 0.11
HSL	344°, 62%, 72%
HSV	344°, 39%, 89%
XYZ	47.8384, 37.6036, 39.3872
YIQ	168.3470, 45.3400, 26.3320

Conversions

Conversions Part 2

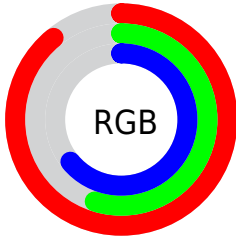
Format	Color
R _Y B	228, 139, 163
Decimal	14977955
CIE Lab	67.73, 36.83, 1.85
CIE LCh	68, 36.877, 2.880
Yxy	37.6036, 0.3832, 0.3012
Android (android.graphics.Color)	4293168035 (0xFFE48BA3)
YUV	168.3470, -2.6361, 52.3157
Hunter-Lab	61.3217, 31.9386, 4.8430

Details

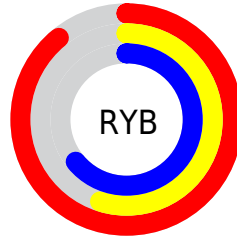
The YUV color $168.3470, -2.6361, 52.3157$ is a light color, and the websafe version is hex $FF99CC$. A complement of this color would be $198.6530, 2.6361, -52.3157$, and the grayscale version is $168.0000, 0.0000, 0.0000$.

A 20% lighter version of the original color is $214.9750, 1.4913, 35.1019$, and $114.5530, -1.7516, 48.6270$ is the 20% darker color. If you saturate the color by 10%, you get $152.9080, -3.4056, 65.8557$, and if you desaturate by 10%, it is $183.7860, -1.8665, 38.7757$.

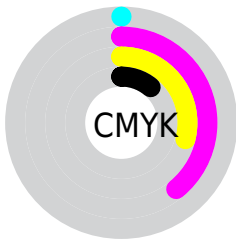
Distribution



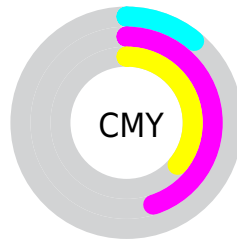
- Red (89%)
- Green (55%)
- Blue (64%)



- Red (89%)
- Yellow (55%)
- Blue (64%)



- Cyan (0%)
- Magenta (39%)
- Yellow (29%)
- Black (11%)



- Cyan (11%)
- Magenta (45%)
- Yellow (36%)

Brightness & Saturation Gradients

These gradients show how the YUV color 168.3470, -2.6361, 52.3157 changes by changing the brightness by 10 percent. The first figure shows a shift by +10% for each color and the second figure -10%.

Similar to the brightness gradients but the following saturation gradients show a change of the YUV color 168.3470, -2.6361, 52.3157 by changing the saturation by 10% instead.


 168.3470, -2.6361,
52.3157


 168.3470, -2.6361,
52.3157


255.0000, 0.0000,
0.0000


 141.4500, -2.1938,
50.4714

 214.9750, 1.4913,
35.1019

 114.5530, -1.7516,
48.6270

 234.6030, 5.6187,
17.8882

 89.0690, -1.0200,
47.2975

 252.6520, 1.1576,
2.0592

 63.4000, 0.2958,
45.2532

 36.0950, 2.9112,
46.3977

 21.3450, 0.3229,
36.5314

 12.0740, -5.4595,

24.4911

■ 0.0000, 0.0000,
0.0000

■ 168.3470, -2.6361,
52.3157

■ 168.3470, -2.6361,
52.3157

■ 152.9080, -3.4056,
65.8557

■ 183.7860, -1.8665,
38.7757

■ 137.5830, -3.7384,
79.2957

■ 199.1110, -1.5337,
25.3357

■ 122.7310, -4.7974,
92.3209

■ 213.9630, -0.4748,
12.3104

■ 107.2920, -5.5670,
105.8609

■ 229.4020, 0.2948,
-1.2296

■ 91.9670, -5.8997,
119.3009

■ 244.7270, 0.6276,
-14.6696

■ 76.5280, -6.6693,
132.8409

■ 246.9270, 3.9800,
-16.5990

■ 75.1260, -6.9641,
134.0705

Harmonies

Analogous

The Analogous color harmony consists of three colors that are next to each other on the color wheel.



169.6620, 12.9846, 35.3764



168.3470, -2.6361, 52.3157



167.0470, -17.7712, 53.4558

Triad

The Triadic color harmony groups three colors that are evenly spaced from another and form a triangle on the color wheel.



168.3470, -2.6361, 52.3157



159.0010, -25.1435, -8.7709



147.2720, 37.3339, -74.7835

Complementary

The Complementary color scheme is a pair of colors which are on the opposite of each other on the color wheel.



168.3470, -2.6361, 52.3157



198.6530, 2.6361, -52.3157

Split Complementary

Split-complementary colors differ from the complementary color scheme. The scheme consists of three colors, the original color and two neighbors of the complement color.



134.7170, 32.1845, -103.2378



168.3470, -2.6361, 52.3157



153.2280, -9.4794, -39.6650

Square

The Square scheme is like the rectangle color scheme, but the four colors are evenly spaced on the color wheel.



168.3470, -2.6361, 52.3157



162.4560, -31.7768, 18.8941



144.9970, 10.8475, -72.7884



160.8410, 34.5884, -34.0636

Rectangle

The Rectangle color scheme consists of four colors that form a rectangle on the color wheel.



168.3470, -2.6361, 52.3157



165.8260, -26.0432, 46.6336



144.9970, 10.8475, -72.7884



142.3690, 36.7931, -88.0236

Sweetspot

The Sweet Spot groups the original color and five complimentary colors.



168.3470, -2.6361, 52.3157



234.2950, -0.6384, 18.1583



168.2820, 29.4410, 30.4477



115.8380, -0.9061, 10.6661



0.0000, 0.0000, 0.0000



128.0000, 0.0000, 0.0000

Same Dimension

The Same Dimension uses a secret algorithm to generate beautiful new colors.



168.3470, -2.6361, 52.3157



174.5280, -3.7113, 70.5739



176.7640, -18.6177, 44.9340



106.9300, -0.4585, 7.0774



58.9930, -5.4195, 105.2461



16.8450, -1.4026, 29.9539

Inverse Universe

The Inverse Universe completely reimagines the original color for something new.



168.3470, -2.6361, 52.3157



174.5280, -3.7113, 70.5739



190.2360, 18.6177, -44.9340



106.9300, -0.4585, 7.0774



58.9930, -5.4195, 105.2461



16.8450, -1.4026, 29.9539

Previews

White Background



This preview shows how the YUV color 168.3470, -2.6361, 52.3157 looks on a white background.

Color Contrast Check

Large Text (above 18pt) WCAG AA × Fail

Any Text WCAG AA × Fail

Large Text (above 18pt) WCAG AAA × Fail

Any Text WCAG AAA × Fail

Black Background



This preview shows how the YUV color 168.3470, -2.6361, 52.3157 looks on a black background.

Color Contrast Check

Large Text (above 18pt) WCAG AA ✓ Pass

Any Text WCAG AA ✓ Pass

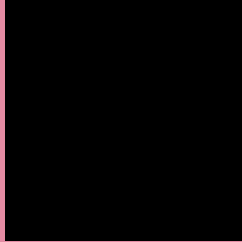
Large Text (above 18pt) WCAG AAA ✓ Pass

Any Text WCAG AAA ✓ Pass

If you want to check with other color combinations, try the [Color Contrast Checker](#).

YUV 168.3470, -2.6361, 52.3157

Background



This preview shows how black text looks on a background with the YUV color 168.3470, -2.6361, 52.3157.



This preview shows how white text looks on a background with the YUV color 168.3470, -2.6361,

Color Blindness Simulation

Color vision deficiency is a very complex topic, and I could not describe the different causes any better than Wikipedia does, so if you want to learn more, you should check out their [article about color blindness](#).

Dichromacy



Original Color

168.3470, -2.6361, 52.3157

Protanopia

165.8950, 5.9678, -0.7849

Deuteranopia

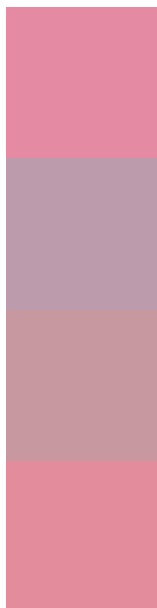
167.0620, -3.9746, 14.8546



Tritanopia

167.9680, -7.8722, 51.7711

Trichromacy



Original Color

168.3470, -2.6361, 52.3157

Protanomaly

166.9190, 2.9979, 18.4880

Deuteranomaly

167.2640, -3.5812, 28.7095

Tritanomaly

167.8370, -5.8356, 51.8860

Monochromacy



Original Color

168.3470, -2.6361, 52.3157

Achromatopsia

168.0000, 0.0000, 0.0000

Achromatomaly

167.8930, -0.9332, 19.3878

CSS Examples

Text

The CSS property to change the color of the text to YUV 168.3470, -2.6361, 52.3157 is called "color". The color property can be set on classes, ids or directly on the HTML element.

This example shows how text in the color `rgb(228, 139, 163)` looks like.

```
.text, #text, p{  
    color:rgb(228, 139, 163)  
}
```

If you want to add a text shadow in that color use the text-shadow property, you can generate a text shadow directly with our [CSS Text Shadow Generator](#).

Here you see how black text with a 4 pixel rgb(228, 139, 163) colored shadow looks like.

```
.shadow{ text-shadow: 4px 4px 2px rgb(228, 139, 163) }
```

Border

The CSS property to change the border of an element to YUV 168.3470, -2.6361, 52.3157 is called "border". The border property can be set on classes, ids or directly on the HTML element.

This example shows the color as border, it can be applied via the CSS property "border" or "border-color".

```
.border, #border, table{ border:4px solid rgb(228, 139, 163) }
```


If only the border color should be changed use the property `border-color`.

```
.border{ border-color:rgb(228, 139, 163) }
```

If you want to add a box shadow in that color use:

Here you see how a box with a 4 pixel `rgb(228, 139, 163)` colored shadow looks like.

```
.boxshadow{ -moz-box-shadow:4px 4px 4px  
4px rgb(228, 139, 163); -webkit-box-  
shadow:4px 4px 4px 4px rgb(228, 139, 163);  
box-shadow:4px 4px 4px 4px rgb(228, 139,  
163) }
```

Background

The CSS property to change the background color of an element to YUV 168.3470, -2.6361, 52.3157 is called "background". The background property can be set on classes, ids or directly on the HTML element.

```
.background, #background, body{  
background: rgb(228, 139, 163) }
```

If only the background color should be changed can be used:

```
.background{ background-color: rgb(228,  
139, 163) }
```

This example shows the color as background, it is applied via the CSS property "background".

To optimize and compress your CSS code, you can use our [online CSS compressor and optimizer](#) based on csstidy. If you want to create a linear or radial gradient as background or border, check our [CSS Gradient Generator](#).

Hey! You found this booklet interesting? Support Converting Colors with the new Membership Option!

The pro membership hides all ads, plus gives you double the colors in the color bucket, and more awesome pro features!

[Learn more, Memberships starting at \\$2.50/m!](#)

**Follow me
on Twitter!**

@ConvertingColor