

Converting Colors

YUV(168.4080, -15.4841,
19.8132)

Have a look what the booklet for
YUV(168.4080, -15.4841, 19.8132)
contains.

YUV(168.4080, -15.4841, 19.8132)	3
<i>Conversions</i>	4
<i>Details</i>	6
<i>Harmonies</i>	12
<i>Previews</i>	24
<i>Color Blindness Simulation</i>	28
<i>CSS Examples</i>	31

Color

**YUV(168.4080, -15.4841,
19.8132)**

Conversions

Conversions Part 1

Format	Color
Hex	BFA389
RGB	191, 163, 137
RGB Percent	75%, 64%, 54%
CMY	0.2510, 0.3608, 0.4627
CMYK	0.00, 0.15, 0.28, 0.25
HSL	29°, 30%, 64%
HSV	29°, 28%, 75%
XYZ	39.0984, 39.0769, 29.1488
YIQ	168.4080, 25.0340, -2.1500

Conversions

Conversions Part 2

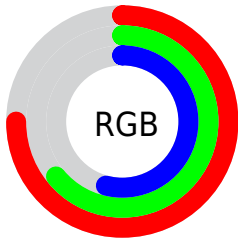
Format	Color
RYB	191, 187, 137
Decimal	12559241
CIELab	68.81, 6.31, 17.32
CIELCh	69, 18.434, 69.980
Yxy	39.0769, 0.3643, 0.3641
Android (android.graphics.Color)	4290749321 (0xFFBFA389)
YUV	168.4080, -15.4841, 19.8132
Hunter-Lab	62.5115, 2.2493, 16.1114

Details

The YUV color **168.4080, -15.4841, 19.8132** is a light color, and the websafe version is hex **CC9999**. A complement of this color would be **159.5920, 15.4841, -19.8132**, and the grayscale version is **169.0000, 0.0000, 0.0000**.

A 20% lighter version of the original color is **223.7780, -16.6526, 21.2427**, and **116.0380, -14.3157, 18.3837** is the 20% darker color. If you saturate the color by 10%, you get **160.3720, -20.8894, 26.8608**, and if you desaturate by 10%, it is **176.4440, -10.0789, 12.7656**.

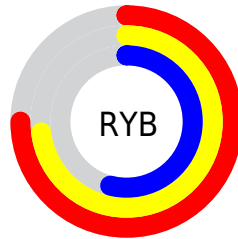
Distribution



Red (75%)

Green (64%)

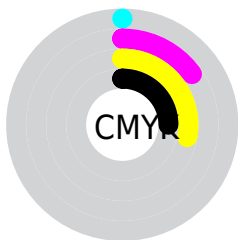
Blue (54%)



Red (75%)

Yellow (73%)

Blue (54%)

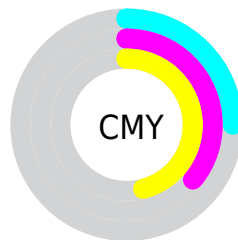


Cyan (0%)

Magenta (15%)

Yellow (28%)

Black (25%)



Cyan (25%)

Magenta (36%)

Yellow (46%)

Brightness & Saturation Gradients

These gradients show how the YUV color 168.4080, -15.4841, 19.8132 changes by changing the brightness by 10 percent. The first figure shows a shift by +10% for each color and the second figure -10%.

Similar to the brightness gradients but the following saturation gradients show a change of the YUV color 168.4080, -15.4841, 19.8132 by changing the saturation by 10% instead.

■ 168.4080,
-15.4841, 19.8132

■ 168.4080,
-15.4841, 19.8132

255.0000, 0.0000,
0.0000

■ 142.2230,
-14.8999, 19.0984

■ 223.7780,
-16.6526, 21.2427

■ 116.0380,
-14.3157, 18.3837

■ 245.4990,
-13.5570, 8.3324

■ 91.5540, -13.5841,
17.0541

■ 254.0880, -3.4944,
0.7998

■ 67.9560, -13.2893,
15.8246

■ 45.2870, -11.9735,
13.7803

■ 23.9880, -11.8261,
13.1655

■ 0.8970, -0.4422,

1.8443

■ 0.0000, 0.0000,
0.0000

■ 168.4080,
-15.4841, 19.8132

■ 168.4080,
-15.4841, 19.8132

■ 160.3720,
-20.8894, 26.8608

■ 176.4440,
-10.0789, 12.7656

■ 152.3360,
-26.2946, 33.9083

■ 184.4800, -4.6736,
5.7180

■ 144.3000,
-31.6999, 40.9559

■ 192.5160, 0.7316,
-1.3295

■ 136.2640,
-37.1052, 48.0035

■ 200.5520, 6.1369,
-8.3771

■ 128.2280,
-42.5104, 55.0510

■ 208.7020, 11.9789,
-15.5247

■ 120.6650,
-48.6418, 61.6838

■ 216.1510, 17.6736,
-22.0574

■ 112.6290,
-54.0471, 68.7314

■ 222.3630, 16.0900,
-27.5054

■ 111.1130,
-54.7787, 70.0609

■ 228.2330, 13.1961,
-32.6533

■ 234.1030, 10.3022,
-37.8013

Harmonies

Analogous

The Analogous color harmony consists of three colors that are next to each other on the color wheel.



169.6030, -11.1433, 27.5352



168.4080, -15.4841, 19.8132



166.9180, -15.7356, 7.0879

Triad

The Triadic color harmony groups three colors that are evenly spaced from another and form a triangle on the color wheel.



168.4080, -15.4841, 19.8132



161.5830, 5.6286, -32.0833



170.3180, 11.1822, 6.7371

Complementary

The Complementary color scheme is a pair of colors which are on the opposite of each other on the color wheel.



168.4080, -15.4841, 19.8132



159.5920, 15.4841, -19.8132

Split Complementary

Split-complementary colors differ from the complementary color scheme. The scheme consists of three colors, the original color and two neighbors of the complement color.



167.4730, 16.0358, -10.0618



168.4080, -15.4841, 19.8132



161.9340, 13.3435, -33.2681

Square

The Square scheme is like the rectangle color scheme, but the four colors are evenly spaced on the color wheel.



168.4080, -15.4841, 19.8132



162.9450, -3.4239, -21.8768



164.9010, 16.8108, -25.3462



171.2720, 4.3029, 19.9325

Rectangle

The Rectangle color scheme consists of four colors that form a rectangle on the color wheel.



168.4080, -15.4841, 19.8132



165.5470, -13.0877, -2.2337



164.9010, 16.8108, -25.3462



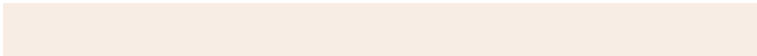
169.8550, 13.3825, 1.0042

Sweetspot

The Sweet Spot groups the original color and five complimentary colors.



168.4080, -15.4841, 19.8132



238.9640, -5.4053, 7.0476



156.4520, 4.7072, 30.2986



119.4090, -3.6526, 4.9033



252.0000, 0.0000, 0.0000



125.0000, 0.0000, 0.0000

Same Dimension

The Same Dimension uses a secret algorithm to generate beautiful new colors.



168.4080, -15.4841, 19.8132



212.1830, -24.2472, 30.5345



183.6700, -23.0083, 6.4284



90.0390, -2.4842, 3.4738



91.8540, -45.2840, 58.0100



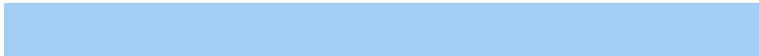
18.0740, -8.9105, 11.3361

Inverse Universe

The Inverse Universe completely reimagines the original color for something new.



159.5920, 15.4841, -19.8132



198.4040, 23.9578, -31.0493



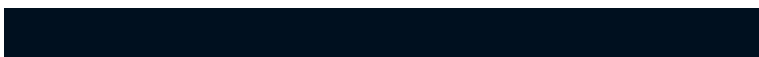
144.3300, 23.0083, -6.4284



88.9610, 2.4842, -3.4738



66.1460, 45.2840, -58.0100



12.9260, 8.9105, -11.3361

Previews

White Background



This preview shows how the YUV color 168.4080, -15.4841, 19.8132 looks on a white background.

Color Contrast Check

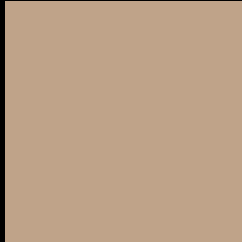
Large Text (above 18pt) WCAG AA × Fail

Any Text WCAG AA × Fail

Large Text (above 18pt) WCAG AAA × Fail

Any Text WCAG AAA × Fail

Black Background



This preview shows how the YUV color 168.4080, -15.4841, 19.8132 looks on a black background.

Color Contrast Check

Large Text (above 18pt) WCAG AA ✓ Pass

Any Text WCAG AA ✓ Pass

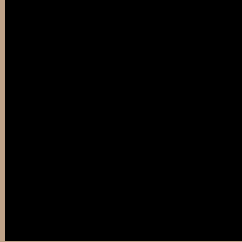
Large Text (above 18pt) WCAG AAA ✓ Pass

Any Text WCAG AAA ✓ Pass

If you want to check with other color combinations, try the [Color Contrast Checker](#).

YUV 168.4080, -15.4841, 19.8132

Background



This preview shows how black text looks on a background with the YUV color 168.4080, -15.4841, 19.8132.



This preview shows how white text looks on a background with the YUV color 168.4080, -15.4841, 19.8132.

Color Blindness Simulation

Color vision deficiency is a very complex topic, and I could not describe the different causes any better than Wikipedia does, so if you want to learn more, you should check out their [article about color blindness](#).

Dichromacy



Original Color

168.4080, -15.4841, 19.8132

Protanopia

167.3850, -13.9938, 8.4324

Deuteranopia

168.4300, -15.4950, 23.3019



Tritanopia

170.5450, 0.2243, 21.4470

Trichromacy



Original Color

168.4080, -15.4841, 19.8132

Protanomaly

167.5920, -14.5889, 12.6358

Deuteranomaly

168.7180, -15.6370, 22.1723

Tritanomaly

170.0520, -5.4486, 21.0024

Monochromacy



Original Color

168.4080, -15.4841, 19.8132

Achromatopsia

168.0000, 0.0000, 0.0000

Achromatomaly

167.9640, -5.4053, 7.0476

CSS Examples

Text

The CSS property to change the color of the text to YUV 168.4080, -15.4841, 19.8132 is called "color". The color property can be set on classes, ids or directly on the HTML element.

This example shows how text in the color `rgb(191, 163, 137)` looks like.

```
.text, #text, p{  
    color:rgb(191, 163, 137)  
}
```

If you want to add a text shadow in that color use the text-shadow property, you can generate a text shadow directly with our [CSS Text Shadow Generator](#).

Here you see how black text with a 4 pixel rgb(191, 163, 137) colored shadow looks like.

```
.shadow{ text-shadow: 4px 4px 2px rgb(191, 163, 137) }
```

Border

The CSS property to change the border of an element to YUV 168.4080, -15.4841, 19.8132 is called "border".

The border property can be set on classes, ids or directly on the HTML element.

This example shows the color as border, it can be applied via the CSS property "border" or "border-color".

```
.border, #border, table{ border:4px solid rgb(191, 163, 137) }
```


If only the border color should be changed use the property `border-color`.

```
.border{ border-color:rgb(191, 163, 137) }
```

If you want to add a box shadow in that color use:

Here you see how a box with a 4 pixel `rgb(191, 163, 137)` colored shadow looks like.

```
.boxshadow{ -moz-box-shadow:4px 4px 4px  
4px rgb(191, 163, 137); -webkit-box-  
shadow:4px 4px 4px 4px rgb(191, 163, 137);  
box-shadow:4px 4px 4px 4px rgb(191, 163,  
137) }
```

Background

The CSS property to change the background color of an element to YUV 168.4080, -15.4841, 19.8132 is called "background". The background property can be set on classes, ids or directly on the HTML element.

```
.background, #background, body{  
background: rgb(191, 163, 137) }
```

If only the background color should be changed can be used:

```
.background{ background-color: rgb(191,  
163, 137) }
```

This example shows the color as background, it is applied via the CSS property "background".

To optimize and compress your CSS code, you can use our [online CSS compressor and optimizer](#) based on csstidy. If you want to create a linear or radial gradient as background or border, check our [CSS Gradient Generator](#).

Hey! You found this booklet interesting? Support Converting Colors with the new Membership Option!

The pro membership hides all ads, plus gives you double the colors in the color bucket, and more awesome pro features!

[Learn more, Memberships starting at \\$2.50/m!](#)

**Follow me
on Twitter!**

@ConvertingColor