

Converting Colors

YUV(168.6180, -0.3047,
51.2010)

Have a look what the booklet for
YUV(168.6180, -0.3047, 51.2010)
contains.

YUV(168.6180, -0.3047, 51.2010)	3
<i>Conversions</i>	4
<i>Details</i>	6
<i>Harmonies</i>	12
<i>Previews</i>	24
<i>Color Blindness Simulation</i>	28
<i>CSS Examples</i>	31

Color

**YUV(168.6180, -0.3047,
51.2010)**

Conversions

Conversions Part 1

Format	Color
Hex	E38BA8
RGB	227, 139, 168
RGB Percent	89%, 55%, 66%
CMY	0.1098, 0.4549, 0.3412
CMYK	0.00, 0.39, 0.26, 0.11
HSL	340°, 61%, 72%
HSV	340°, 39%, 89%
XYZ	47.9791, 37.6233, 41.7790
YIQ	168.6180, 43.1390, 27.6750

Conversions

Conversions Part 2

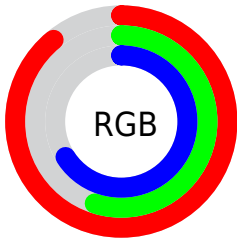
Format	Color
R_{YB}	227, 139, 168
Decimal	14912424
CIE _{Lab}	67.74, 37.16, -0.95
CIE _{LCh}	68, 37.169, 358.536
Yxy	37.6233, 0.3767, 0.2954
Android (android.graphics.Color)	4293102504 (0xFFE38BA8)
YUV	168.6180, -0.3047, 51.2010
Hunter-Lab	61.3378, 32.2833, 2.5523

Details

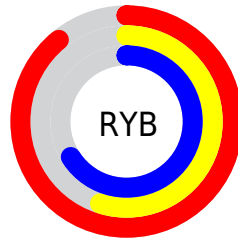
The YUV color **168.6180, -0.3047, 51.2010** is a light color, and the websafe version is hex **FF99CC**. A complement of this color would be **197.3820, 0.3047, -51.2010**, and the grayscale version is **169.0000, 0.0000, 0.0000**.

A 20% lighter version of the original color is **215.5450, 3.6753, 34.6020**, and **115.1230, 0.4324, 48.1271** is the 20% darker color. If you saturate the color by 10%, you get **153.4070, -0.2007, 64.5411**, and if you desaturate by 10%, it is **183.8290, -0.4087, 37.8610**.

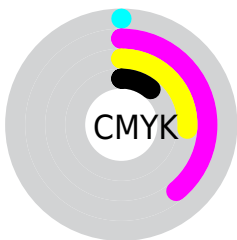
Distribution



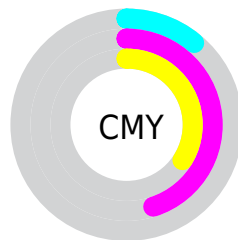
- Red (89%)
- Green (55%)
- Blue (66%)



- Red (89%)
- Yellow (55%)
- Blue (66%)



- Cyan (0%)
- Magenta (39%)
- Yellow (26%)
- Black (11%)



- Cyan (11%)
- Magenta (45%)
- Yellow (34%)

Brightness & Saturation Gradients

These gradients show how the YUV color 168.6180, -0.3047, 51.2010 changes by changing the brightness by 10 percent. The first figure shows a shift by +10% for each color and the second figure -10%.

Similar to the brightness gradients but the following saturation gradients show a change of the YUV color 168.6180, -0.3047, 51.2010 by changing the saturation by 10% instead.

■ 168.6180, -0.3047,
51.2010

■ 168.6180, -0.3047,
51.2010

■ 255.0000, 0.0000,
0.0000

■ 141.7210, 0.1375,
49.3567

■ 215.5450, 3.6753,
34.6020

■ 115.1230, 0.4324,
48.1271

■ 235.2870, 8.2395,
17.2883

■ 89.3400, 1.3114,
46.1828

■ 252.6520, 1.1576,
2.0592

■ 63.8560, 2.0430,
44.8533

■ 36.2520, 4.8058,
45.3830

■ 21.3880, 1.7807,
35.6167

■ 12.3730, -5.6069,

25.1059

■ 0.0000, 0.0000,
0.0000

■ 168.6180, -0.3047,
51.2010

■ 168.6180, -0.3047,
51.2010

■ 153.4070, -0.2007,
64.5411

■ 183.8290, -0.4087,
37.8610

■ 138.7830, -0.3860,
77.3663

■ 198.4530, -0.2233,
25.0357

■ 123.4580, -0.7188,
90.8063

■ 213.7780, 0.1094,
11.5957

■ 108.2470, -0.6148,
104.1464

■ 228.9890, 0.0054,
-1.7444

■ 93.6230, -0.8001,
116.9716

■ 243.6130, 0.1908,
-14.5696

■ 78.4120, -0.6961,
130.3117

■ 246.6280, 4.1274,
-17.2138

■ 76.4230, -0.7015,
132.0560

Harmonies

Analogous

The Analogous color harmony consists of three colors that are next to each other on the color wheel.



169.6230, 15.4689, 31.9026



168.6180, -0.3047, 51.2010



166.6280, -15.5926, 54.7002

Triad

The Triadic color harmony groups three colors that are evenly spaced from another and form a triangle on the color wheel.



168.6180, -0.3047, 51.2010



159.5670, -26.9015, -4.8823



144.9290, 37.5030, -82.3757

Complementary

The Complementary color scheme is a pair of colors which are on the opposite of each other on the color wheel.



168.6180, -0.3047, 51.2010



197.3820, 0.3047, -51.2010

Split Complementary

Split-complementary colors differ from the complementary color scheme. The scheme consists of three colors, the original color and two neighbors of the complement color.



133.3640, 30.8795, -104.6822



168.6180, -0.3047, 51.2010



154.4520, -12.5478, -35.4764

Square

The Square scheme is like the rectangle color scheme, but the four colors are evenly spaced on the color wheel.



168.6180, -0.3047, 51.2010



162.6630, -32.3719, 23.0975



146.2210, 7.7790, -68.5998



159.4380, 35.7731, -40.7261

Rectangle

The Rectangle color scheme consists of four colors that form a rectangle on the color wheel.



168.6180, -0.3047, 51.2010



165.5920, -24.4489, 48.5928



146.2210, 7.7790, -68.5998



138.7270, 37.1096, -96.2306

Sweetspot

The Sweet Spot groups the original color and five complimentary colors.



168.6180, -0.3047, 51.2010



234.4090, -0.2016, 18.0583



166.6730, 29.7412, 27.4738



116.0660, -0.0325, 10.4661



0.0000, 0.0000, 0.0000



128.0000, 0.0000, 0.0000

Same Dimension

The Same Dimension uses a secret algorithm to generate beautiful new colors.



168.6180, -0.3047, 51.2010



175.4400, -0.2169, 69.7741



174.1170, -17.3127, 46.3784



107.0440, -0.0217, 6.9774



60.2470, -0.6148, 104.1464



17.1870, -0.0922, 29.6540

Inverse Universe

The Inverse Universe completely reimagines the original color for something new.



168.6180, -0.3047, 51.2010



175.4400, -0.2169, 69.7741



191.8830, 17.3127, -46.3784



107.0440, -0.0217, 6.9774



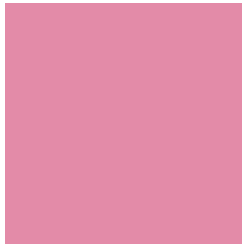
60.2470, -0.6148, 104.1464



17.1870, -0.0922, 29.6540

Previews

White Background



This preview shows how the YUV color 168.6180, -0.3047, 51.2010 looks on a white background.

Color Contrast Check

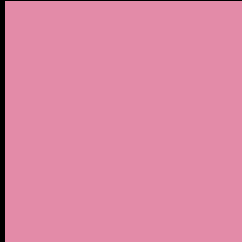
Large Text (above 18pt) WCAG AA × Fail

Any Text WCAG AA × Fail

Large Text (above 18pt) WCAG AAA × Fail

Any Text WCAG AAA × Fail

Black Background



This preview shows how the YUV color 168.6180, -0.3047, 51.2010 looks on a black background.

Color Contrast Check

Large Text (above 18pt) WCAG AA ✓ Pass

Any Text WCAG AA ✓ Pass

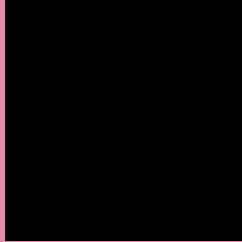
Large Text (above 18pt) WCAG AAA ✓ Pass

Any Text WCAG AAA ✓ Pass

If you want to check with other color combinations, try the [Color Contrast Checker](#).

YUV 168.6180, -0.3047, 51.2010

Background



This preview shows how black text looks on a background with the YUV color 168.6180, -0.3047, 51.2010.



This preview shows how white text looks on a background with the YUV color 168.6180, -0.3047,

Color Blindness Simulation

Color vision deficiency is a very complex topic, and I could not describe the different causes any better than Wikipedia does, so if you want to learn more, you should check out their [article about color blindness](#).

Dichromacy



Original Color

168.6180, -0.3047, 51.2010

Protanopia

165.8670, 8.4466, -2.5144

Deuteranopia

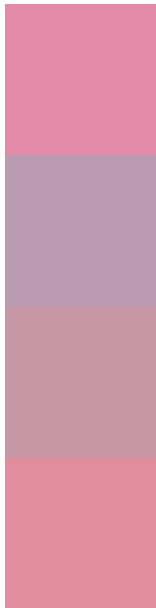
167.0340, -1.4958, 13.1252



Tritanopia

167.9570, -7.8668, 50.0267

Trichromacy



Original Color

168.6180, -0.3047, 51.2010

Protanomaly

166.8910, 5.4767, 16.7586

Deuteranomaly

167.2360, -1.1023, 26.9800

Tritanomaly

168.3530, -5.1040, 50.5564

Monochromacy



Original Color

168.6180, -0.3047, 51.2010

Achromatopsia

169.0000, 0.0000, 0.0000

Achromatomaly

168.8220, 0.0878, 18.5731

CSS Examples

Text

The CSS property to change the color of the text to YUV 168.6180, -0.3047, 51.2010 is called "color". The color property can be set on classes, ids or directly on the HTML element.

This example shows how text in the color `rgb(227, 139, 168)` looks like.

```
.text, #text, p{  
    color:rgb(227, 139, 168)  
}
```

If you want to add a text shadow in that color use the text-shadow property, you can generate a text shadow directly with our [CSS Text Shadow Generator](#).

Here you see how black text with a 4 pixel rgb(227, 139, 168) colored shadow looks like.

```
.shadow{ text-shadow: 4px 4px 2px rgb(227, 139, 168) }
```

Border

The CSS property to change the border of an element to YUV 168.6180, -0.3047, 51.2010 is called "border". The border property can be set on classes, ids or directly on the HTML element.

This example shows the color as border, it can be applied via the CSS property "border" or "border-color".

```
.border, #border, table{ border:4px solid rgb(227, 139, 168) }
```


If only the border color should be changed use the property `border-color`.

```
.border{ border-color:rgb(227, 139, 168) }
```

If you want to add a box shadow in that color use:

Here you see how a box with a 4 pixel `rgb(227, 139, 168)` colored shadow looks like.

```
.boxshadow{ -moz-box-shadow:4px 4px 4px  
4px rgb(227, 139, 168); -webkit-box-  
shadow:4px 4px 4px 4px rgb(227, 139, 168);  
box-shadow:4px 4px 4px 4px rgb(227, 139,  
168) }
```

Background

The CSS property to change the background color of an element to YUV 168.6180, -0.3047, 51.2010 is called "background". The background property can be set on classes, ids or directly on the HTML element.

```
.background, #background, body{  
background: rgb(227, 139, 168) }
```

If only the background color should be changed can be used:

```
.background{ background-color: rgb(227,  
139, 168) }
```

This example shows the color as background, it is applied via the CSS property "background".

To optimize and compress your CSS code, you can use our [online CSS compressor and optimizer](#) based on csstidy. If you want to create a linear or radial gradient as background or border, check our [CSS Gradient Generator](#).

Hey! You found this booklet interesting? Support Converting Colors with the new Membership Option!

The pro membership hides all ads, plus gives you double the colors in the color bucket, and more awesome pro features!

[Learn more, Memberships starting at \\$2.50/m!](#)

**Follow me
on Twitter!**

@ConvertingColor