

Converting Colors

YUV(168.7210, -3.3135,
36.2017)

Have a look what the booklet for
YUV(168.7210, -3.3135, 36.2017)
contains.

YUV(168.7210, -3.3135, 36.2017)	3
<i>Conversions</i>	4
<i>Details</i>	6
<i>Harmonies</i>	12
<i>Previews</i>	24
<i>Color Blindness Simulation</i>	28
<i>CSS Examples</i>	31

Color

**YUV(168.7210, -3.3135,
36.2017)**

Conversions

Conversions Part 1

Format	Color
Hex	D295A2
RGB	210, 149, 162
RGB Percent	82%, 58%, 64%
CMY	0.1765, 0.4157, 0.3647
CMYK	0.00, 0.29, 0.23, 0.18
HSL	347°, 40%, 70%
HSV	347°, 29%, 82%
XYZ	43.8474, 37.8052, 39.1685
YIQ	168.7210, 32.1830, 16.9750

Conversions

Conversions Part 2

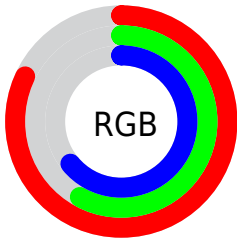
Format	Color
RYB	210, 149, 162
Decimal	13800866
CIELab	67.88, 24.80, 2.37
CIELCh	68, 24.917, 5.469
Yxy	37.8052, 0.3629, 0.3129
Android (android.graphics.Color)	4291990946 (0xFFD295A2)
YUV	168.7210, -3.3135, 36.2017
Hunter-Lab	61.4859, 19.6932, 5.2705

Details

The YUV color **168.7210, -3.3135, 36.2017** is a light color, and the websafe version is hex **CC9999**. A complement of this color would be **190.2790, 3.3135, -36.2017**, and the grayscale version is **169.0000, 0.0000, 0.0000**.

A 20% lighter version of the original color is **220.7310, -1.8394, 30.0539**, and **116.1120, -3.0132, 33.2278** is the 20% darker color. If you saturate the color by 10%, you get **154.4560, -4.6618, 48.7121**, and if you desaturate by 10%, it is **182.9860, -1.9651, 23.6913**.

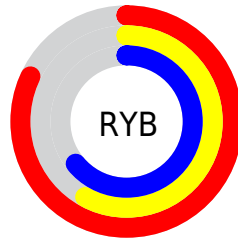
Distribution



Red (82%)

Green (58%)

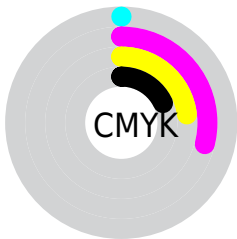
Blue (64%)



Red (82%)

Yellow (58%)

Blue (64%)

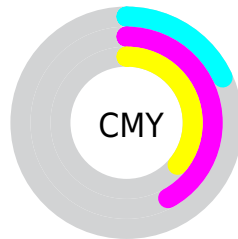


Cyan (0%)

Magenta (29%)

Yellow (23%)

Black (18%)



Cyan (18%)

Magenta (42%)

Yellow (36%)

Brightness & Saturation Gradients

These gradients show how the YUV color 168.7210, -3.3135, 36.2017 changes by changing the brightness by 10 percent. The first figure shows a shift by +10% for each color and the second figure -10%.

Similar to the brightness gradients but the following saturation gradients show a change of the YUV color 168.7210, -3.3135, 36.2017 by changing the saturation by 10% instead.

■ 168.7210, -3.3135,
36.2017

■ 168.7210, -3.3135,
36.2017

255.0000, 0.0000,
0.0000

■ 142.1230, -3.0186,
34.9721

■ 220.7310, -1.8394,
30.0539

■ 116.1120, -3.0132,
33.2278

■ 240.3590, 2.2880,
12.8402

■ 90.9270, -2.4290,
32.5130

■ 66.7310, -1.8394,
30.0539

■ 43.2470, -1.1078,
28.7244

■ 20.2900, 0.3500,
27.8097

■ 8.7850, -3.8380,

17.7286

■ 0.0000, 0.0000,
0.0000

■ 168.7210, -3.3135,
36.2017

■ 168.7210, -3.3135,
36.2017

■ 154.4560, -4.6618,
48.7121

■ 182.9860, -1.9651,
23.6913

■ 140.3050, -5.5734,
61.1225

■ 197.1370, -1.0535,
11.2809

■ 126.0400, -6.9217,
73.6329

■ 211.4020, 0.2948,
-1.2296

■ 111.8890, -7.8333,
86.0433

■ 225.5530, 1.2064,
-13.6400

■ 97.6240, -9.1816,
98.5538

■ 239.8180, 2.5547,
-26.1504

■ 83.4730, -10.0932,
110.9642

■ 241.5450, 6.6333,
-27.6650

■ 69.2080, -11.4415,
123.4746

■ 67.9200, -11.2996,
124.6042

Harmonies

Analogous

The Analogous color harmony consists of three colors that are next to each other on the color wheel.



169.4020, 7.1968, 25.0804



168.7210, -3.3135, 36.2017



167.0880, -13.3544, 36.7568

Triad

The Triadic color harmony groups three colors that are evenly spaced from another and form a triangle on the color wheel.



168.7210, -3.3135, 36.2017



161.3030, -16.4184, -7.2817



159.1210, 23.1113, -39.5711

Complementary

The Complementary color scheme is a pair of colors which are on the opposite of each other on the color wheel.



168.7210, -3.3135, 36.2017



190.2790, 3.3135, -36.2017

Split Complementary

Split-complementary colors differ from the complementary color scheme. The scheme consists of three colors, the original color and two neighbors of the complement color.



155.2740, 17.6129, -49.3523



168.7210, -3.3135, 36.2017



157.9290, -5.8810, -27.1247

Square

The Square scheme is like the rectangle color scheme, but the four colors are evenly spaced on the color wheel.



168.7210, -3.3135, 36.2017



163.8710, -21.1354, 12.3911



155.4460, 6.6821, -43.3641



164.1390, 22.6095, -18.5389

Rectangle

The Rectangle color scheme consists of four colors that form a rectangle on the color wheel.



168.7210, -3.3135, 36.2017



166.3880, -18.4323, 32.1087



155.4460, 6.6821, -43.3641



157.1590, 22.1066, -43.9894

Sweetspot

The Sweet Spot groups the original color and five complimentary colors.



168.7210, -3.3135, 36.2017



239.4470, -1.2064, 13.6400



170.3060, 19.5691, 23.4106



117.8270, -0.9007, 8.9217



0.0000, 0.0000, 0.0000



128.0000, 0.0000, 0.0000

Same Dimension

The Same Dimension uses a secret algorithm to generate beautiful new colors.



168.7210, -3.3135, 36.2017



194.7770, -4.8201, 52.8156



177.2180, -13.9115, 28.7498



97.5170, -0.7479, 6.5626



54.3360, -9.0396, 99.6833



13.2850, -2.1125, 24.3061

Inverse Universe

The Inverse Universe completely reimagines the original color for something new.



168.7210, -3.3135, 36.2017



194.7770, -4.8201, 52.8156



181.7820, 13.9115, -28.7498



97.5170, -0.7479, 6.5626



54.3360, -9.0396, 99.6833



13.2850, -2.1125, 24.3061

Previews

White Background



This preview shows how the YUV color 168.7210, -3.3135, 36.2017 looks on a white background.

Color Contrast Check

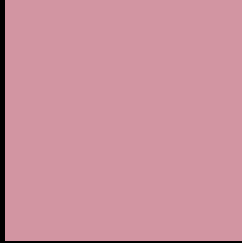
Large Text (above 18pt) WCAG AA × Fail

Any Text WCAG AA × Fail

Large Text (above 18pt) WCAG AAA × Fail

Any Text WCAG AAA × Fail

Black Background



This preview shows how the YUV color 168.7210, -3.3135, 36.2017 looks on a black background.

Color Contrast Check

Large Text (above 18pt) WCAG AA ✓ Pass

Any Text WCAG AA ✓ Pass

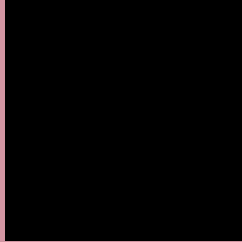
Large Text (above 18pt) WCAG AAA ✓ Pass

Any Text WCAG AAA ✓ Pass

If you want to check with other color combinations, try the [Color Contrast Checker](#).

YUV 168.7210, -3.3135, 36.2017

Background



This preview shows how black text looks on a background with the YUV color 168.7210, -3.3135, 36.2017.



This preview shows how white text looks on a background with the YUV color 168.7210, -3.3135,

Color Blindness Simulation

Color vision deficiency is a very complex topic, and I could not describe the different causes any better than Wikipedia does, so if you want to learn more, you should check out their [article about color blindness](#).

Dichromacy



Original Color

168.7210, -3.3135, 36.2017

Protanopia

166.2820, 2.3260, 0.6297

Deuteranopia

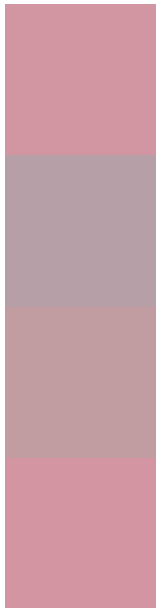
167.1760, -3.5378, 14.7546



Tritanopia

168.6070, -3.7503, 36.3017

Trichromacy



Original Color

168.7210, -3.3135, 36.2017

Protanomaly

167.2020, 0.3934, 13.8548

Deuteranomaly

167.6330, -3.2701, 22.2469

Tritanomaly

168.6070, -3.7503, 36.3017

Monochromacy



Original Color

168.7210, -3.3135, 36.2017

Achromatopsia

169.0000, 0.0000, 0.0000

Achromatomaly

169.0340, -1.4958, 13.1252

CSS Examples

Text

The CSS property to change the color of the text to YUV 168.7210, -3.3135, 36.2017 is called "color". The color property can be set on classes, ids or directly on the HTML element.

This example shows how text in the color `rgb(210, 149, 162)` looks like.

```
.text, #text, p{  
    color:rgb(210, 149, 162)  
}
```

If you want to add a text shadow in that color use the text-shadow property, you can generate a text shadow directly with our [CSS Text Shadow Generator](#).

Here you see how black text with a 4 pixel rgb(210, 149, 162) colored shadow looks like.

```
.shadow{ text-shadow: 4px 4px 2px rgb(210, 149, 162) }
```

Border

The CSS property to change the border of an element to YUV 168.7210, -3.3135, 36.2017 is called "border". The border property can be set on classes, ids or directly on the HTML element.

This example shows the color as border, it can be applied via the CSS property "border" or "border-color".

```
.border, #border, table{ border:4px solid rgb(210, 149, 162) }
```


If only the border color should be changed use the property `border-color`.

```
.border{ border-color:rgb(210, 149, 162) }
```

If you want to add a box shadow in that color use:

Here you see how a box with a 4 pixel `rgb(210, 149, 162)` colored shadow looks like.

```
.boxshadow{ -moz-box-shadow:4px 4px 4px  
4px rgb(210, 149, 162); -webkit-box-  
shadow:4px 4px 4px 4px rgb(210, 149, 162);  
box-shadow:4px 4px 4px 4px rgb(210, 149,  
162) }
```

Background

The CSS property to change the background color of an element to YUV 168.7210, -3.3135, 36.2017 is called "background". The background property can be set on classes, ids or directly on the HTML element.

```
.background, #background, body{  
background: rgb(210, 149, 162) }
```

If only the background color should be changed can be used:

```
.background{ background-color: rgb(210,  
149, 162) }
```

This example shows the color as background, it is applied via the CSS property "background".

To optimize and compress your CSS code, you can use our [online CSS compressor and optimizer](#) based on csstidy. If you want to create a linear or radial gradient as background or border, check our [CSS Gradient Generator](#).

Hey! You found this booklet interesting? Support Converting Colors with the new Membership Option!

The pro membership hides all ads, plus gives you double the colors in the color bucket, and more awesome pro features!

[Learn more, Memberships starting at \\$2.50/m!](#)

**Follow me
on Twitter!**

@ConvertingColor