

Converting Colors

YUV(168.8000, -16.6634,
24.7314)

Have a look what the booklet for
YUV(168.8000, -16.6634, 24.7314)
contains.

YUV(168.8000, -16.6634, 24.7314)	3
<i>Conversions</i>	4
<i>Details</i>	6
<i>Harmonies</i>	12
<i>Previews</i>	24
<i>Color Blindness Simulation</i>	28
<i>CSS Examples</i>	31

Color

**YUV(168.8000, -16.6634,
24.7314)**

Conversions

Conversions Part 1

Format	Color
Hex	C5A187
RGB	197, 161, 135
RGB Percent	77%, 63%, 53%
CMY	0.2275, 0.3686, 0.4706
CMYK	0.00, 0.18, 0.31, 0.23
HSL	25°, 35%, 65%
HSV	25°, 31%, 77%
XYZ	40.1440, 39.1093, 28.3547
YIQ	168.8000, 29.8020, -0.4540

Conversions

Conversions Part 2

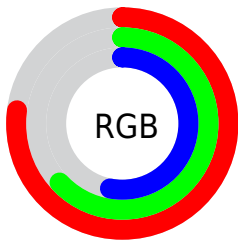
Format	Color
R_{YB}	197, 180, 135
Decimal	12951943
CIE _{Lab}	68.83, 9.50, 18.54
CIE _{LCh}	69, 20.831, 62.882
Yxy	39.1093, 0.3731, 0.3634
Android (android.graphics.Color)	4291142023 (0xFFC5A187)
YUV	168.8000, -16.6634, 24.7314
Hunter-Lab	62.5374, 5.1421, 16.8939

Details

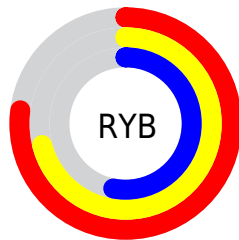
The YUV color **168.8000, -16.6634, 24.7314** is a light color, and the websafe version is hex **CC9999**. A complement of this color would be **163.2000, 16.6634, -24.7314**, and the grayscale version is **169.0000, 0.0000, 0.0000**.

A 20% lighter version of the original color is **224.1700, -17.8318, 26.1609**, and **116.1310, -15.3476, 22.6871** is the 20% darker color. If you saturate the color by 10%, you get **160.0630, -22.2161, 32.3937**, and if you desaturate by 10%, it is **177.5370, -11.1107, 17.0691**.

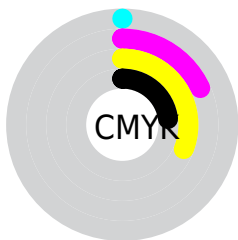
Distribution



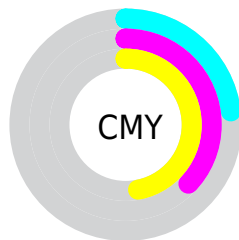
- Red (77%)
- Green (63%)
- Blue (53%)



- Red (77%)
- Yellow (71%)
- Blue (53%)



- Cyan (0%)
- Magenta (18%)
- Yellow (31%)
- Black (23%)



- Cyan (23%)
- Magenta (37%)
- Yellow (47%)

Brightness & Saturation Gradients

These gradients show how the YUV color 168.8000, -16.6634, 24.7314 changes by changing the brightness by 10 percent. The first figure shows a shift by +10% for each color and the second figure -10%.

Similar to the brightness gradients but the following saturation gradients show a change of the YUV color 168.8000, -16.6634, 24.7314 by changing the saturation by 10% instead.

■ 168.8000,
-16.6634, 24.7314

■ 168.8000,
-16.6634, 24.7314

255.0000, 0.0000,
0.0000

■ 142.3160,
-15.9318, 23.4019

■ 224.1700,
-17.8318, 26.1609

■ 116.1310,
-15.3476, 22.6871

■ 244.0970,
-13.8518, 9.5619

■ 91.6470, -14.6160,
21.3576

■ 253.8600, -4.3680,
0.9998

■ 67.8640, -13.7370,
19.4133

■ 45.3800, -13.0053,
18.0837

■ 24.0100, -11.8369,
16.6542

■ 3.5880, -1.7689,

7.3773

■ 0.0000, 0.0000,
0.0000

■ 168.8000,
-16.6634, 24.7314

■ 168.8000,
-16.6634, 24.7314

■ 160.0630,
-22.2161, 32.3937

■ 177.5370,
-11.1107, 17.0691

■ 150.8530,
-27.0425, 40.4709

■ 186.7470, -6.2843,
8.9919

■ 142.1160,
-32.5952, 48.1333

■ 195.4840, -0.7316,
1.3295

■ 132.7920,
-37.8585, 56.3104

■ 204.8080, 4.5317,
-6.8476

■ 124.1690,
-42.9743, 63.8728

■ 213.5450, 10.0843,
-14.5100

■ 114.8450,
-48.2376, 72.0499

■ 222.7550, 14.9108,
-22.5871

■ 107.6240,
-53.0586, 78.3828

■ 229.4400, 12.6011,
-28.4499

■ 236.4840, 9.1284,
-34.6275

■ 237.6580, 8.5496,
-35.6571

Harmonies

Analogous

The Analogous color harmony consists of three colors that are next to each other on the color wheel.



170.0380, -10.8647, 31.5387



168.8000, -16.6634, 24.7314



166.6690, -18.0778, 11.6913

Triad

The Triadic color harmony groups three colors that are evenly spaced from another and form a triangle on the color wheel.



168.8000, -16.6634, 24.7314



160.5180, 4.1816, -34.6573



170.5070, 14.5400, 3.0634

Complementary

The Complementary color scheme is a pair of colors which are on the opposite of each other on the color wheel.



168.8000, -16.6634, 24.7314



163.2000, 16.6634, -24.7314

Split Complementary

Split-complementary colors differ from the complementary color scheme. The scheme consists of three colors, the original color and two neighbors of the complement color.



166.8250, 18.8203, -16.5095



168.8000, -16.6634, 24.7314



160.6020, 13.5072, -39.1160

Square

The Square scheme is like the rectangle color scheme, but the four colors are evenly spaced on the color wheel.



168.8000, -16.6634, 24.7314



162.2610, -6.0447, -21.2769



163.3130, 18.5797, -32.7235



171.2550, 6.7763, 19.9474

Rectangle

The Rectangle color scheme consists of four colors that form a rectangle on the color wheel.



168.8000, -16.6634, 24.7314



165.4720, -16.0087, 1.3401



163.3130, 18.5797, -32.7235



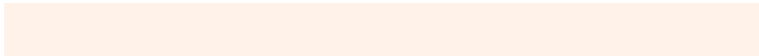
169.2180, 16.1615, -3.6992

Sweetspot

The Sweet Spot groups the original color and five complimentary colors.



168.8000, -16.6634, 24.7314



244.7470, -6.2843, 8.9919



157.6420, 6.5855, 34.5170



121.0070, -3.9475, 6.1329



0.0000, 0.0000, 0.0000



128.0000, 0.0000, 0.0000

Same Dimension

The Same Dimension uses a secret algorithm to generate beautiful new colors.



168.8000, -16.6634, 24.7314



211.0700, -26.1635, 38.5266



186.9970, -25.6345, 8.7726



95.0390, -2.4842, 3.4738



88.6530, -43.7059, 65.2023



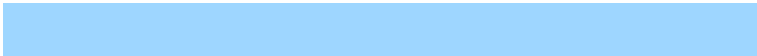
19.5690, -9.6475, 14.4100

Inverse Universe

The Inverse Universe completely reimagines the original color for something new.



163.2000, 16.6634, -24.7314



201.9300, 26.1635, -38.5266



145.0030, 25.6345, -8.7726



93.9610, 2.4842, -3.4738



74.3470, 43.7059, -65.2023



16.4310, 9.6475, -14.4100

Previews

White Background



This preview shows how the YUV color 168.8000, -16.6634, 24.7314 looks on a white background.

Color Contrast Check

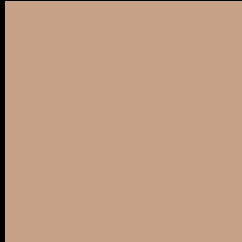
Large Text (above 18pt) WCAG AA × Fail

Any Text WCAG AA × Fail

Large Text (above 18pt) WCAG AAA × Fail

Any Text WCAG AAA × Fail

Black Background



This preview shows how the YUV color 168.8000, -16.6634, 24.7314 looks on a black background.

Color Contrast Check

Large Text (above 18pt) WCAG AA ✓ Pass

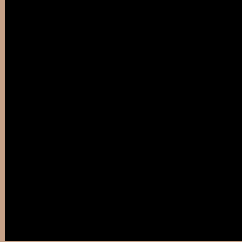
Any Text WCAG AA ✓ Pass

Large Text (above 18pt) WCAG AAA ✓ Pass

Any Text WCAG AAA ✓ Pass

If you want to check with other color combinations, try the [Color Contrast Checker](#).

YUV 168.8000, -16.6634, 24.7314 Background



This preview shows how black text looks on a background with the YUV color 168.8000, -16.6634, 24.7314.



This preview shows how white text looks on a background with the YUV color 168.8000, -16.6634, 24.7314.

24.7314.

Color Blindness Simulation

Color vision deficiency is a very complex topic, and I could not describe the different causes any better than Wikipedia does, so if you want to learn more, you should check out their [article about color blindness](#).

Dichromacy



Original Color

168.8000, -16.6634, 24.7314

Protanopia

167.5700, -14.5780, 9.1471

Deuteranopia

169.0880, -16.8054, 23.6018



Tritanopia

170.8230, -1.3917, 26.4652

Trichromacy



Original Color

168.8000, -16.6634, 24.7314

Protanomaly

167.7880, -15.1785, 15.0949

Deuteranomaly

169.0880, -16.8054, 23.6018

Tritanomaly

170.3300, -7.0647, 26.0206

Monochromacy



Original Color

168.8000, -16.6634, 24.7314

Achromatopsia

169.0000, 0.0000, 0.0000

Achromatomaly

168.8610, -5.8475, 8.8919

CSS Examples

Text

The CSS property to change the color of the text to YUV 168.8000, -16.6634, 24.7314 is called "color". The color property can be set on classes, ids or directly on the HTML element.

This example shows how text in the color `rgb(197, 161, 135)` looks like.

```
.text, #text, p{  
    color:rgb(197, 161, 135)  
}
```

If you want to add a text shadow in that color use the text-shadow property, you can generate a text shadow directly with our [CSS Text Shadow Generator](#).

Here you see how black text with a 4 pixel rgb(197, 161, 135) colored shadow looks like.

```
.shadow{ text-shadow: 4px 4px 2px rgb(197, 161, 135) }
```

Border

The CSS property to change the border of an element to YUV 168.8000, -16.6634, 24.7314 is called "border".

The border property can be set on classes, ids or directly on the HTML element.

This example shows the color as border, it can be applied via the CSS property "border" or "border-color".

```
.border, #border, table{ border:4px solid rgb(197, 161, 135) }
```


If only the border color should be changed use the property `border-color`.

```
.border{ border-color:rgb(197, 161, 135) }
```

If you want to add a box shadow in that color use:

Here you see how a box with a 4 pixel `rgb(197, 161, 135)` colored shadow looks like.

```
.boxshadow{ -moz-box-shadow:4px 4px 4px  
4px rgb(197, 161, 135); -webkit-box-  
shadow:4px 4px 4px 4px rgb(197, 161, 135);  
box-shadow:4px 4px 4px 4px rgb(197, 161,  
135) }
```

Background

The CSS property to change the background color of an element to YUV 168.8000, -16.6634, 24.7314 is called "background". The background property can be set on classes, ids or directly on the HTML element.

```
.background, #background, body{  
background: rgb(197, 161, 135) }
```

If only the background color should be changed can be used:

```
.background{ background-color: rgb(197,  
161, 135) }
```

This example shows the color as background, it is applied via the CSS property "background".

To optimize and compress your CSS code, you can use our [online CSS compressor and optimizer](#) based on csstidy. If you want to create a linear or radial gradient as background or border, check our [CSS Gradient Generator](#).

Hey! You found this booklet interesting? Support Converting Colors with the new Membership Option!

The pro membership hides all ads, plus gives you double the colors in the color bucket, and more awesome pro features!

[Learn more, Memberships starting at \\$2.50/m!](#)

**Follow me
on Twitter!**

@ConvertingColor