

# Converting Colors

YUV(168.9450, -26.5949,  
36.8822)

Have a look what the booklet for  
YUV(168.9450, -26.5949, 36.8822)  
contains.

<b>YUV(168.9450, -26.5949, 36.8822)</b> .....	3
<b><i>Conversions</i></b> .....	4
<b><i>Details</i></b> .....	6
<b><i>Harmonies</i></b> .....	12
<b><i>Previews</i></b> .....	24
<b><i>Color Blindness Simulation</i></b> .....	28
<b><i>CSS Examples</i></b> .....	31

# Color

**YUV(168.9450, -26.5949,  
36.8822)**

# Conversions

## Conversions Part 1

<b>Format</b>	<b>Color</b>
Hex	D39E73
RGB	211, 158, 115
RGB Percent	83%, 62%, 45%
CMY	0.1725, 0.3804, 0.5490
CMYK	0.00, 0.25, 0.45, 0.17
HSL	27°, 52%, 64%
HSV	27°, 45%, 83%
XYZ	42.1853, 39.5404, 21.6283
YIQ	168.9450, 45.3910, -2.1370

# Conversions

## Conversions Part 2

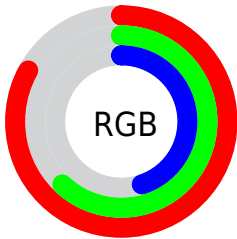
<b>Format</b>	<b>Color</b>
<b>R<sub>YB</sub></b>	211, 193, 115
Decimal	13868659
CIE <sub>Lab</sub>	69.14, 14.41, 30.10
CIE <sub>LCh</sub>	69, 33.372, 64.417
Yxy	39.5404, 0.4082, 0.3826
Android (android.graphics.Color)	4292058739 (0xFFD39E73)
YUV	168.9450, -26.5949, 36.8822
Hunter-Lab	62.8812, 9.7090, 23.6237

# Details

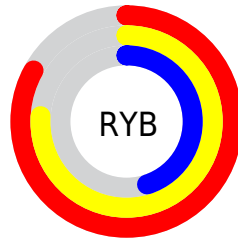
The YUV color **168.9450, -26.5949, 36.8822** is a light color, and the websafe version is hex **CC9966**. A complement of this color would be **157.0550, 26.5949, -36.8822**, and the grayscale version is **169.0000, 0.0000, 0.0000**.

A 20% lighter version of the original color is **220.3140, -26.2838, 30.4196**, and **116.3790, -24.8368, 32.9936** is the 20% darker color. If you saturate the color by 10%, you get **159.5070, -32.2950, 45.1594**, and if you desaturate by 10%, it is **178.3830, -20.8948, 28.6051**.

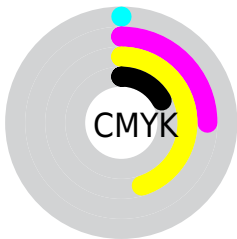
# Distribution



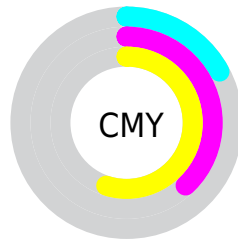
- Red (83%)
- Green (62%)
- Blue (45%)



- Red (83%)
- Yellow (76%)
- Blue (45%)



- Cyan (0%)
- Magenta (25%)
- Yellow (45%)
- Black (17%)



- Cyan (17%)
- Magenta (38%)
- Yellow (55%)

# Brightness & Saturation Gradients

These gradients show how the YUV color 168.9450, -26.5949, 36.8822 changes by changing the brightness by 10 percent. The first figure shows a shift by +10% for each color and the second figure -10%.

Similar to the brightness gradients but the following saturation gradients show a change of the YUV color 168.9450, -26.5949, 36.8822 by changing the saturation by 10% instead.



■ 168.9450,  
-26.5949, 36.8822

■ 168.9450,  
-26.5949, 36.8822

255.0000, 0.0000,  
0.0000

■ 142.1620,  
-25.7159, 34.9379

■ 220.3140,  
-26.2838, 30.4196

■ 116.3790,  
-24.8368, 32.9936

■ 239.9420,  
-22.1564, 13.2059

■ 91.0090, -23.6684,  
31.5641

■ 251.3520,  
-13.9775, 3.1993

■ 66.9270, -22.6420,  
29.0050

254.6580, -1.3104,  
0.2999

■ 43.8450, -21.6156,  
26.4459

■ 24.3310, -11.9952,  
20.7577

■ 6.8770, -3.3904,

14.1399

■ 0.0000, 0.0000,  
0.0000

■ 168.9450,  
-26.5949, 36.8822

■ 168.9450,  
-26.5949, 36.8822

■ 159.5070,  
-32.2950, 45.1594

■ 178.3830,  
-20.8948, 28.6051

■ 150.6560,  
-38.2844, 52.9217

■ 187.2340,  
-14.9054, 20.8428

■ 141.2180,  
-43.9845, 61.1988

■ 196.6720, -9.2053,  
12.5657

■ 131.7800,  
-49.6845, 69.4759

■ 206.1100, -3.5052,  
4.2885

■ 122.8150,  
-56.1108, 77.3382

■ 214.9610, 2.4842,  
-3.4738

■ 118.8540,  
-58.5950, 80.8120

■ 224.5130, 8.6211,  
-11.8509

■ 233.0390, 10.8268,  
-19.3282

■ 239.4960, 7.6435,  
-24.9910

■ 241.8440, 6.4859,  
-27.0502

# Harmonies

## Analogous

The Analogous color harmony consists of three colors that are next to each other on the color wheel.



170.5410, -17.0287, 48.6375



168.9450, -26.5949, 36.8822



166.2430, -28.7138, 16.4499

# Triad

The Triadic color harmony groups three colors that are evenly spaced from another and form a triangle on the color wheel.



168.9450, -26.5949, 36.8822



152.4220, 9.6520, -62.6371



171.8200, 23.2597, 6.2969

# Complementary

The Complementary color scheme is a pair of colors which are on the opposite of each other on the color wheel.



168.9450, -26.5949, 36.8822



157.0550, 26.5949, -36.8822

# Split Complementary

Split-complementary colors differ from the complementary color scheme. The scheme consists of three colors, the original color and two neighbors of the complement color.



165.9620, 31.0777, -28.0307



168.9450, -26.5949, 36.8822



149.5740, 25.8460, -76.8024

# Square

The Square scheme is like the rectangle color scheme, but the four colors are evenly spaced on the color wheel.



168.9450, -26.5949, 36.8822



158.5920, -8.1799, -36.4762



156.8070, 32.6331, -60.3437



173.3690, 10.6641, 33.0024



# Rectangle

The Rectangle color scheme consists of four colors that form a rectangle on the color wheel.



168.9450, -26.5949, 36.8822



164.6430, -25.4600, -0.5639



156.8070, 32.6331, -60.3437



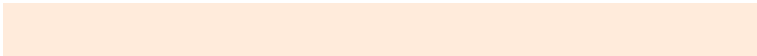
170.5520, 26.3499, -4.8691

# Sweetspot

The Sweet Spot groups the original color and five complimentary colors.



168.9450, -26.5949, 36.8822



239.1560, -9.9369, 13.8952



149.8600, 9.4360, 53.6198



118.4480, -6.1369, 8.3771



0.0000, 0.0000, 0.0000



128.0000, 0.0000, 0.0000



# Same Dimension

The Same Dimension uses a secret algorithm to generate beautiful new colors.



168.9450, -26.5949, 36.8822



193.8410, -38.8686, 53.6364



196.5340, -40.1963, 12.6867



100.2240, -3.0684, 4.1886



94.2570, -46.4687, 64.6726



22.8250, -11.2527, 15.9395



# Inverse Universe

The Inverse Universe completely reimagines the original color for something new.



157.0550, 26.5949, -36.8822



176.1590, 38.8686, -53.6364



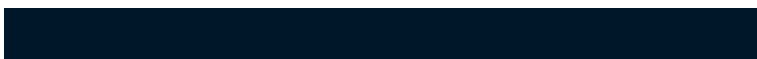
129.4660, 40.1963, -12.6867



98.7760, 3.0684, -4.1886



73.7430, 46.4687, -64.6726



18.1750, 11.2527, -15.9395



# Previews

## White Background



This preview shows how the YUV color 168.9450, -26.5949, 36.8822 looks on a white background.

## Color Contrast Check

Large Text (above 18pt) WCAG AA × Fail

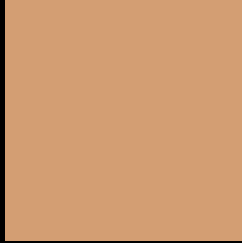
Any Text WCAG AA × Fail

Large Text (above 18pt) WCAG AAA × Fail

Any Text WCAG AAA × Fail



# Black Background



This preview shows how the YUV color 168.9450, -26.5949, 36.8822 looks on a black background.

## Color Contrast Check

Large Text (above 18pt) WCAG AA ✓ Pass

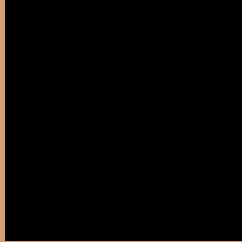
Any Text WCAG AA ✓ Pass

Large Text (above 18pt) WCAG AAA ✓ Pass

Any Text WCAG AAA ✓ Pass

If you want to check with other color combinations, try the [Color Contrast Checker](#).

# YUV 168.9450, -26.5949, 36.8822 Background



This preview shows how black text looks on a background with the YUV color 168.9450, -26.5949, 36.8822.



This preview shows how white text looks on a background with the YUV color 168.9450, -26.5949, 36.8822.



# Color Blindness Simulation

Color vision deficiency is a very complex topic, and I could not describe the different causes any better than Wikipedia does, so if you want to learn more, you should check out their [article about color blindness](#).

## Dichromacy



### Original Color

168.9450, -26.5949, 36.8822

### Protanopia

167.3010, -23.3194, 12.8910

### Deuteranopia

168.4880, -26.8626, 29.3900



## Tritanopia

172.0910, -4.4819, 37.6312

# Trichromacy



## Original Color

168.9450, -26.5949, 36.8822

## Protanomaly

168.0140, -24.6569, 21.9127

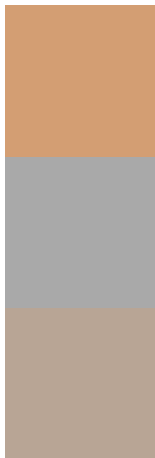
## Deuteranomaly

168.7980, -27.0154, 31.7492

## Tritanomaly

171.0280, -12.3388, 37.6864

# Monochromacy



## Original Color

168.9450, -26.5949, 36.8822

## Achromatopsia

169.0000, 0.0000, 0.0000

## Achromatomaly

168.8570, -9.7895, 13.2804

# CSS Examples

## Text

The CSS property to change the color of the text to YUV 168.9450, -26.5949, 36.8822 is called "color". The color property can be set on classes, ids or directly on the HTML element.

This example shows how text in the color `rgb(211, 158, 115)` looks like.

```
.text, #text, p{  
    color:rgb(211, 158, 115)  
}
```

If you want to add a text shadow in that color use the text-shadow property, you can generate a text shadow directly with our [CSS Text Shadow Generator](#).

Here you see how black text with a 4 pixel rgb(211, 158, 115) colored shadow looks like.

```
.shadow{ text-shadow: 4px 4px 2px rgb(211, 158, 115) }
```

## Border

The CSS property to change the border of an element to YUV 168.9450, -26.5949, 36.8822 is called "border".

The border property can be set on classes, ids or directly on the HTML element.

This example shows the color as border, it can be applied via the CSS property "border" or "border-color".

```
.border, #border, table{ border:4px solid rgb(211, 158, 115) }
```



If only the border color should be changed use the property `border-color`.

```
.border{ border-color:rgb(211, 158, 115) }
```

If you want to add a box shadow in that color use:

Here you see how a box with a 4 pixel `rgb(211, 158, 115)` colored shadow looks like.

```
.boxshadow{ -moz-box-shadow:4px 4px 4px  
4px rgb(211, 158, 115); -webkit-box-  
shadow:4px 4px 4px 4px rgb(211, 158, 115);  
box-shadow:4px 4px 4px 4px rgb(211, 158,  
115) }
```

# Background

The CSS property to change the background color of an element to YUV 168.9450, -26.5949, 36.8822 is called "background". The background property can be set on classes, ids or directly on the HTML element.

```
.background, #background, body{  
background: rgb(211, 158, 115) }
```

If only the background color should be changed can be used:

```
.background{ background-color: rgb(211,  
158, 115) }
```

This example shows the color as background, it is applied via the CSS property "background".

To optimize and compress your CSS code, you can use our [online CSS compressor and optimizer](#) based on csstidy. If you want to create a linear or radial gradient as background or border, check our [CSS Gradient Generator](#).

Hey! You found this booklet interesting? Support Converting Colors with the new Membership Option!

The pro membership hides all ads, plus gives you double the colors in the color bucket, and more awesome pro features!

**[Learn more, Memberships starting at \\$2.50/m!](#)**

**Follow me  
on Twitter!**

@ConvertingColor