

Converting Colors

YUV(168.9490, -5.8909,
22.8467)

Have a look what the booklet for
YUV(168.9490, -5.8909, 22.8467)
contains.

YUV(168.9490, -5.8909, 22.8467)	3
<i>Conversions</i>	4
<i>Details</i>	6
<i>Harmonies</i>	12
<i>Previews</i>	24
<i>Color Blindness Simulation</i>	28
<i>CSS Examples</i>	31

Color

**YUV(168.9490, -5.8909,
22.8467)**

Conversions

Conversions Part 1

Format	Color
Hex	C39E9D
RGB	195, 158, 157
RGB Percent	76%, 62%, 62%
CMY	0.2353, 0.3804, 0.3843
CMYK	0.00, 0.19, 0.19, 0.24
HSL	2°, 24%, 69%
HSV	2°, 19%, 76%
XYZ	40.8183, 38.4901, 37.1763
YIQ	168.9490, 22.3730, 7.5330

Conversions

Conversions Part 2

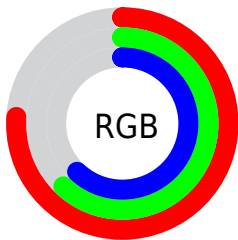
Format	Color
R_{YB}	195, 158, 157
Decimal	12820125
CIE _{Lab}	68.38, 13.52, 5.70
CIE _{LCh}	68, 14.675, 22.842
Yxy	38.4901, 0.3504, 0.3304
Android (android.graphics.Color)	4291010205 (0xFFC39E9D)
YUV	168.9490, -5.8909, 22.8467
Hunter-Lab	62.0404, 8.8700, 7.9002

Details

The YUV color **168.9490, -5.8909, 22.8467** is a light color, and the websafe version is hex **CC9999**. A complement of this color would be **183.0510, 5.8909, -22.8467**, and the grayscale version is **169.0000, 0.0000, 0.0000**.

A 20% lighter version of the original color is **224.5470, -6.1857, 24.0763**, and **117.0520, -5.4486, 21.0024** is the 20% darker color. If you saturate the color by 10%, you get **155.6300, -8.6916, 34.5275**, and if you desaturate by 10%, it is **182.3820, -2.6533, 11.0660**.

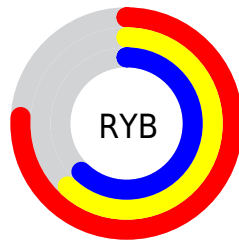
Distribution



Red (76%)

Green (62%)

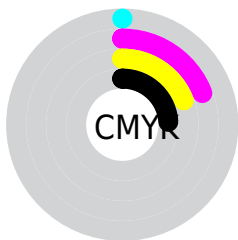
Blue (62%)



Red (76%)

Yellow (62%)

Blue (62%)

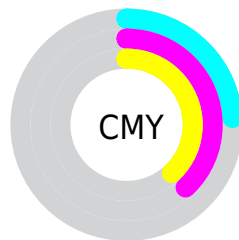


Cyan (0%)

Magenta (19%)

Yellow (19%)

Black (24%)



Cyan (24%)

Magenta (38%)

Yellow (38%)

Brightness & Saturation Gradients

These gradients show how the YUV color 168.9490, -5.8909, 22.8467 changes by changing the brightness by 10 percent. The first figure shows a shift by +10% for each color and the second figure -10%.

Similar to the brightness gradients but the following saturation gradients show a change of the YUV color 168.9490, -5.8909, 22.8467 by changing the saturation by 10% instead.

■ 168.9490, -5.8909,
22.8467

■ 168.9490, -5.8909,
22.8467

255.0000, 0.0000,
0.0000

■ 142.6500, -5.7435,
22.2319

■ 224.5470, -6.1857,
24.0763

■ 117.0520, -5.4486,
21.0024

■ 245.0720, -2.5005,
8.7069

■ 91.8670, -4.8644,
20.2876

■ 68.2690, -4.5696,
19.0581

■ 45.6710, -4.2748,
17.8285

■ 24.0730, -3.9800,
16.5990

■ 4.7840, -2.3585,

9.8364

0.0000, 0.0000,
0.0000

168.9490, -5.8909,
22.8467

168.9490, -5.8909,
22.8467

155.6300, -8.6916,
34.5275

182.3820, -2.6533,
11.0660

142.1970,
-11.9291, 46.3082

195.7010, 0.1474,
-0.6148

128.8780,
-14.7299, 57.9890

209.1340, 3.3849,
-12.3955

115.4450,
-17.9674, 69.7697

222.4530, 6.1857,
-24.0763

102.1260,
-20.7681, 81.4505

235.8860, 9.4232,
-35.8570

■ 88.6930, -24.0056,
93.2312

■ 237.0600, 8.8444,
-36.8866

■ 75.3740, -26.8064,
104.9120

■ 61.9410, -30.0439,
116.6927

■ 61.2400, -30.1913,
117.3075

Harmonies

Analogous

The Analogous color harmony consists of three colors that are next to each other on the color wheel.



169.5340, 0.2297, 19.7027



168.9490, -5.8909, 22.8467



168.2600, -10.9742, 19.9430

Triad

The Triadic color harmony groups three colors that are evenly spaced from another and form a triangle on the color wheel.



168.9490, -5.8909, 22.8467



163.2130, -6.5140, -10.7108



165.4570, 13.5787, -15.3098

Complementary

The Complementary color scheme is a pair of colors which are on the opposite of each other on the color wheel.



168.9490, -5.8909, 22.8467



183.0510, 5.8909, -22.8467

Split Complementary

Split-complementary colors differ from the complementary color scheme. The scheme consists of three colors, the original color and two neighbors of the complement color.



162.9460, 11.8586, -23.6316



168.9490, -5.8909, 22.8467



161.9820, 0.5019, -21.0322

Square

The Square scheme is like the rectangle color scheme, but the four colors are evenly spaced on the color wheel.



168.9490, -5.8909, 22.8467



165.0250, -11.3513, 0.8551



161.6700, 7.0647, -26.0206



167.3770, 11.6461, -2.0846

Rectangle

The Rectangle color scheme consists of four colors that form a rectangle on the color wheel.



168.9490, -5.8909, 22.8467



167.1840, -12.4157, 15.6246



161.6700, 7.0647, -26.0206



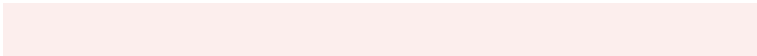
164.4350, 13.5895, -18.7985

Sweetspot

The Sweet Spot groups the original color and five complimentary colors.



168.9490, -5.8909, 22.8467



242.0720, -2.5005, 8.7069



172.5800, 10.5601, 19.6623



121.6910, -1.3267, 5.5330



0.0000, 0.0000, 0.0000



128.0000, 0.0000, 0.0000

Same Dimension

The Same Dimension uses a secret algorithm to generate beautiful new colors.



168.9490, -5.8909, 22.8467



212.5160, -9.1284, 34.6275



180.1020, -11.3893, 13.0655



89.9900, -1.4741, 6.1478



50.4870, -24.8901, 96.9199



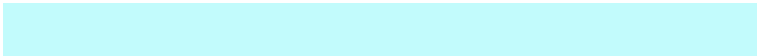
10.4540, -5.1538, 19.7728

Inverse Universe

The Inverse Universe completely reimagines the original color for something new.



183.0510, 5.8909, -22.8467



234.0710, 8.8390, -35.1423



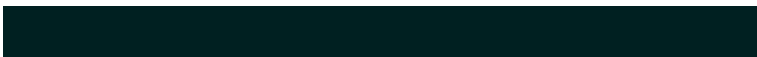
171.8980, 11.3893, -13.0655



94.0100, 1.4741, -6.1478



109.9260, 25.1795, -96.4051



22.5460, 5.1538, -19.7728

Previews

White Background



This preview shows how the YUV color 168.9490, -5.8909, 22.8467 looks on a white background.

Color Contrast Check

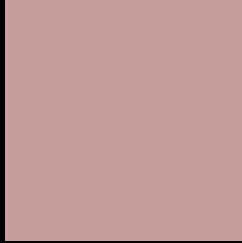
Large Text (above 18pt) WCAG AA × Fail

Any Text WCAG AA × Fail

Large Text (above 18pt) WCAG AAA × Fail

Any Text WCAG AAA × Fail

Black Background



This preview shows how the YUV color 168.9490, -5.8909, 22.8467 looks on a black background.

Color Contrast Check

Large Text (above 18pt) WCAG AA ✓ Pass

Any Text WCAG AA ✓ Pass

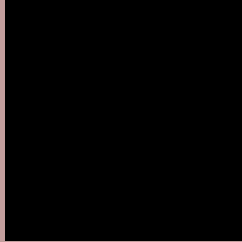
Large Text (above 18pt) WCAG AAA ✓ Pass

Any Text WCAG AAA ✓ Pass

If you want to check with other color combinations, try the [Color Contrast Checker](#).

YUV 168.9490, -5.8909, 22.8467

Background



This preview shows how black text looks on a background with the YUV color 168.9490, -5.8909, 22.8467.



This preview shows how white text looks on a background with the YUV color 168.9490, -5.8909,

Color Blindness Simulation

Color vision deficiency is a very complex topic, and I could not describe the different causes any better than Wikipedia does, so if you want to learn more, you should check out their [article about color blindness](#).

Dichromacy



Original Color

168.9490, -5.8909, 22.8467

Protanopia

167.0390, -2.4842, 3.4738

Deuteranopia

168.2040, -6.0166, 16.4841



Tritanopia

169.3280, -0.6547, 23.3913

Trichromacy



Original Color

168.9490, -5.8909, 22.8467

Protanomaly

167.7410, -3.8163, 10.7511

Deuteranomaly

168.5140, -6.1694, 18.8432

Tritanomaly

169.4590, -2.6913, 23.2765

Monochromacy



Original Color

168.9490, -5.8909, 22.8467

Achromatopsia

169.0000, 0.0000, 0.0000

Achromatomaly

168.8870, -1.9163, 7.9921

CSS Examples

Text

The CSS property to change the color of the text to YUV 168.9490, -5.8909, 22.8467 is called "color". The color property can be set on classes, ids or directly on the HTML element.

This example shows how text in the color `rgb(195, 158, 157)` looks like.

```
.text, #text, p{  
    color:rgb(195, 158, 157)  
}
```

If you want to add a text shadow in that color use the text-shadow property, you can generate a text shadow directly with our [CSS Text Shadow Generator](#).

Here you see how black text with a 4 pixel rgb(195, 158, 157) colored shadow looks like.

```
.shadow{ text-shadow: 4px 4px 2px rgb(195, 158, 157) }
```

Border

The CSS property to change the border of an element to YUV 168.9490, -5.8909, 22.8467 is called "border". The border property can be set on classes, ids or directly on the HTML element.

This example shows the color as border, it can be applied via the CSS property "border" or "border-color".

```
.border, #border, table{ border:4px solid rgb(195, 158, 157) }
```


If only the border color should be changed use the property `border-color`.

```
.border{ border-color:rgb(195, 158, 157) }
```

If you want to add a box shadow in that color use:

Here you see how a box with a 4 pixel `rgb(195, 158, 157)` colored shadow looks like.

```
.boxshadow{ -moz-box-shadow:4px 4px 4px  
4px rgb(195, 158, 157); -webkit-box-  
shadow:4px 4px 4px 4px rgb(195, 158, 157);  
box-shadow:4px 4px 4px 4px rgb(195, 158,  
157) }
```

Background

The CSS property to change the background color of an element to YUV 168.9490, -5.8909, 22.8467 is called "background". The background property can be set on classes, ids or directly on the HTML element.

```
.background, #background, body{  
background: rgb(195, 158, 157) }
```

If only the background color should be changed can be used:

```
.background{ background-color: rgb(195,  
158, 157) }
```

This example shows the color as background, it is applied via the CSS property "background".

To optimize and compress your CSS code, you can use our [online CSS compressor and optimizer](#) based on csstidy. If you want to create a linear or radial gradient as background or border, check our [CSS Gradient Generator](#).

Hey! You found this booklet interesting? Support Converting Colors with the new Membership Option!

The pro membership hides all ads, plus gives you double the colors in the color bucket, and more awesome pro features!

[Learn more, Memberships starting at \\$2.50/m!](#)

**Follow me
on Twitter!**

@ConvertingColor