

# Converting Colors

YUV(169.5580, -6.1911,  
25.8206)

Have a look what the booklet for  
YUV(169.5580, -6.1911, 25.8206)  
contains.

<b>YUV(169.5580, -6.1911, 25.8206)</b> .....	3
<b><i>Conversions</i></b> .....	4
<b><i>Details</i></b> .....	6
<b><i>Harmonies</i></b> .....	12
<b><i>Previews</i></b> .....	24
<b><i>Color Blindness Simulation</i></b> .....	28
<b><i>CSS Examples</i></b> .....	31

# Color

**YUV(169.5580, -6.1911,  
25.8206)**

# Conversions

## Conversions Part 1

Format	Color
Hex	C79D9D
RGB	199, 157, 157
RGB Percent	78%, 62%, 62%
CMY	0.2196, 0.3843, 0.3843
CMYK	0.00, 0.21, 0.21, 0.22
HSL	0°, 27%, 70%
HSV	0°, 21%, 78%
XYZ	41.6960, 38.6904, 37.1687
YIQ	169.5580, 25.0320, 8.9040

# Conversions

## Conversions Part 2

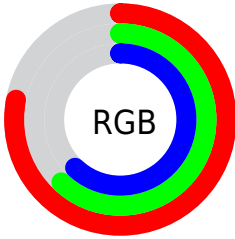
<b>Format</b>	<b>Color</b>
<b>RYB</b>	199, 157, 157
Decimal	13082013
CIELab	68.53, 15.58, 5.96
CIELCh	69, 16.679, 20.929
Yxy	38.6904, 0.3547, 0.3291
Android (android.graphics.Color)	4291272093 (0xFFC79D9D)
YUV	169.5580, -6.1911, 25.8206
Hunter-Lab	62.2016, 10.8022, 8.1123

# Details

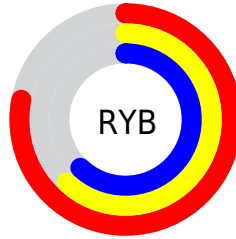
The YUV color  $169.5580, -6.1911, 25.8206$  is a light color, and the websafe version is hex  $CC9999$ . A complement of this color would be  $186.4420, 6.1911, -25.8206$ , and the grayscale version is  $170.0000, 0.0000, 0.0000$ .

A 20% lighter version of the original color is  $224.8570, -6.3385, 26.4354$ , and  $117.3620, -5.6015, 23.3615$  is the 20% darker color. If you saturate the color by 10%, you get  $155.5380, -9.1392, 38.1162$ , and if you desaturate by 10%, it is  $183.5780, -3.2430, 13.5251$ .

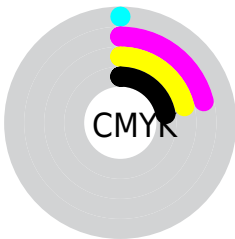
# Distribution



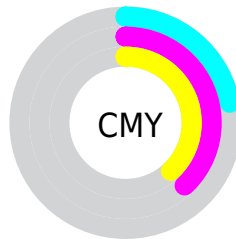
- Red (78%)
- Green (62%)
- Blue (62%)



- Red (78%)
- Yellow (62%)
- Blue (62%)



- Cyan (0%)
- Magenta (21%)
- Yellow (21%)
- Black (22%)



- Cyan (22%)
- Magenta (38%)
- Yellow (38%)

# Brightness & Saturation Gradients

These gradients show how the YUV color 169.5580, -6.1911, 25.8206 changes by changing the brightness by 10 percent. The first figure shows a shift by +10% for each color and the second figure -10%.

Similar to the brightness gradients but the following saturation gradients show a change of the YUV color 169.5580, -6.1911, 25.8206 by changing the saturation by 10% instead.



 169.5580, -6.1911,  
25.8206


 169.5580, -6.1911,  
25.8206


255.0000, 0.0000,  
0.0000


 142.9600, -5.8963,  
24.5911


 224.8570, -6.3385,  
26.4354


 117.3620, -5.6015,  
23.3615

 244.4850, -2.2111,  
9.2217

 92.1770, -5.0173,  
22.6468

 68.5790, -4.7224,  
21.4172

 45.6820, -4.2802,  
19.5729

 24.0840, -3.9854,  
18.3433

 6.2790, -3.0955,

12.9103

■ 0.0000, 0.0000,  
0.0000

■ 169.5580, -6.1911,  
25.8206

■ 169.5580, -6.1911,  
25.8206

■ 155.5380, -9.1392,  
38.1162

■ 183.5780, -3.2430,  
13.5251

■ 141.5180,  
-12.0874, 50.4117

■ 197.5980, -0.2948,  
1.2296

■ 127.4980,  
-15.0355, 62.7073

■ 211.6180, 2.6533,  
-11.0660

■ 113.4780,  
-17.9837, 75.0028

■ 225.6380, 5.6015,  
-23.3615

■ 100.1590,  
-20.7844, 86.6836

■ 238.2560, 8.2548,  
-34.4275

■ 86.1390, -23.7325,  
98.9791

■ 72.1190, -26.6807,  
111.2746

■ 59.5010, -29.3340,  
122.3406

# Harmonies

## Analogous

The Analogous color harmony consists of three colors that are next to each other on the color wheel.



170.0720, 0.9505, 21.8619



169.5580, -6.1911, 25.8206



168.6410, -12.1480, 23.1168

# Triad

The Triadic color harmony groups three colors that are evenly spaced from another and form a triangle on the color wheel.



169.5580, -6.1911, 25.8206



163.2730, -7.5296, -11.6404



165.4890, 15.0419, -17.9689

# Complementary

The Complementary color scheme is a pair of colors which are on the opposite of each other on the color wheel.



169.5580, -6.1911, 25.8206



186.4420, 6.1911, -25.8206

# Split Complementary

Split-complementary colors differ from the complementary color scheme. The scheme consists of three colors, the original color and two neighbors of the complement color.



162.9670, 13.3273, -28.0351



169.5580, -6.1911, 25.8206



162.1450, -0.0715, -23.8062

# Square

The Square scheme is like the rectangle color scheme, but the four colors are evenly spaced on the color wheel.



169.5580, -6.1911, 25.8206



165.2810, -12.9565, 2.3846



161.4630, 7.6597, -30.2241



168.1210, 13.2513, -3.6141



# Rectangle

The Rectangle color scheme consists of four colors that form a rectangle on the color wheel.



169.5580, -6.1911, 25.8206



167.7390, -14.1683, 17.7689



161.4630, 7.6597, -30.2241



164.1680, 15.2002, -22.0723

# Sweetspot

The Sweet Spot groups the original color and five complimentary colors.



169.5580, -6.1911, 25.8206



244.4850, -2.2111, 9.2217



174.3460, 12.1544, 21.6216



121.6910, -1.3267, 5.5330



0.0000, 0.0000, 0.0000



128.0000, 0.0000, 0.0000



# Same Dimension

The Same Dimension uses a secret algorithm to generate beautiful new colors.



169.5580, -6.1911, 25.8206



210.1360, -9.4340, 39.3457



181.8850, -12.2683, 15.0099



92.6910, -1.3267, 5.5330



48.7370, -24.0273, 100.2087



10.7640, -5.3067, 22.1320



# Inverse Universe

The Inverse Universe completely reimagines the original color for something new.



186.4420, 6.1911, -25.8206



235.8640, 9.4340, -39.3457



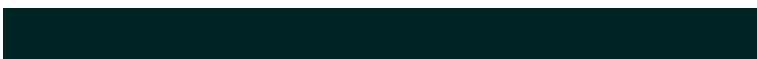
174.1150, 12.2683, -15.0099



96.3090, 1.3267, -5.5330



114.2630, 24.0273, -100.2087

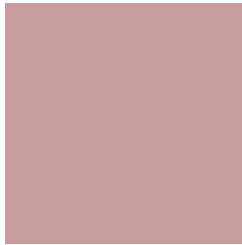


25.2360, 5.3067, -22.1320



# Previews

## White Background



This preview shows how the YUV color 169.5580, -6.1911, 25.8206 looks on a white background.

## Color Contrast Check

Large Text (above 18pt) WCAG AA × Fail

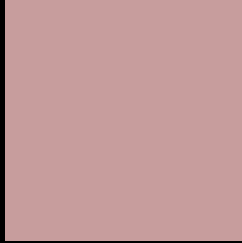
Any Text WCAG AA × Fail

Large Text (above 18pt) WCAG AAA × Fail

Any Text WCAG AAA × Fail



# Black Background



This preview shows how the YUV color 169.5580, -6.1911, 25.8206 looks on a black background.

## Color Contrast Check

Large Text (above 18pt) WCAG AA ✓ Pass

Any Text WCAG AA ✓ Pass

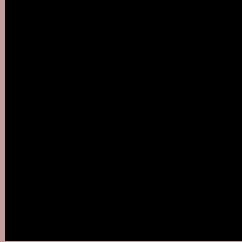
Large Text (above 18pt) WCAG AAA ✓ Pass

Any Text WCAG AAA ✓ Pass

If you want to check with other color combinations, try the [Color Contrast Checker](#).

# YUV 169.5580, -6.1911, 25.8206

## Background



This preview shows how black text looks on a background with the YUV color 169.5580, -6.1911, 25.8206.



This preview shows how white text looks on a background with the YUV color 169.5580, -6.1911,



# Color Blindness Simulation

Color vision deficiency is a very complex topic, and I could not describe the different causes any better than Wikipedia does, so if you want to learn more, you should check out their [article about color blindness](#).

## Dichromacy



### Original Color

169.5580, -6.1911, 25.8206

### Protanopia

167.6260, -2.7736, 2.9590

### Deuteranopia

169.0900, -6.4534, 16.5841



## Tritanopia

169.8230, -1.3917, 26.4652

# Trichromacy



## Original Color

169.5580, -6.1911, 25.8206

## Protanomaly

168.0400, -3.9637, 11.3659

## Deuteranomaly

169.1120, -6.4642, 20.0728

## Tritanomaly

169.9540, -3.4283, 26.3503

# Monochromacy



## Original Color

169.5580, -6.1911, 25.8206

## Achromatopsia

170.0000, 0.0000, 0.0000

## Achromatomaly

169.7840, -2.3585, 9.8364

# CSS Examples

## Text

The CSS property to change the color of the text to YUV 169.5580, -6.1911, 25.8206 is called "color". The color property can be set on classes, ids or directly on the HTML element.

This example shows how text in the color `rgb(199, 157, 157)` looks like.

```
.text, #text, p{  
    color:rgb(199, 157, 157)  
}
```

If you want to add a text shadow in that color use the text-shadow property, you can generate a text shadow directly with our [CSS Text Shadow Generator](#).

Here you see how black text with a 4 pixel rgb(199, 157, 157) colored shadow looks like.

```
.shadow{ text-shadow: 4px 4px 2px rgb(199, 157, 157) }
```

## Border

The CSS property to change the border of an element to YUV 169.5580, -6.1911, 25.8206 is called "border". The border property can be set on classes, ids or directly on the HTML element.

This example shows the color as border, it can be applied via the CSS property "border" or "border-color".

```
.border, #border, table{ border:4px solid rgb(199, 157, 157) }
```



If only the border color should be changed use the property `border-color`.

```
.border{ border-color:rgb(199, 157, 157) }
```

If you want to add a box shadow in that color use:

Here you see how a box with a 4 pixel `rgb(199, 157, 157)` colored shadow looks like.

```
.boxshadow{ -moz-box-shadow:4px 4px 4px  
4px rgb(199, 157, 157); -webkit-box-  
shadow:4px 4px 4px 4px rgb(199, 157, 157);  
box-shadow:4px 4px 4px 4px rgb(199, 157,  
157) }
```

# Background

The CSS property to change the background color of an element to YUV 169.5580, -6.1911, 25.8206 is called "background". The background property can be set on classes, ids or directly on the HTML element.

```
.background, #background, body{  
background: rgb(199, 157, 157) }
```

If only the background color should be changed can be used:

```
.background{ background-color: rgb(199,  
157, 157) }
```

This example shows the color as background, it is applied via the CSS property "background".

To optimize and compress your CSS code, you can use our [online CSS compressor and optimizer](#) based on csstidy. If you want to create a linear or radial gradient as background or border, check our [CSS Gradient Generator](#).

Hey! You found this booklet interesting? Support Converting Colors with the new Membership Option!

The pro membership hides all ads, plus gives you double the colors in the color bucket, and more awesome pro features!

**[Learn more, Memberships starting at \\$2.50/m!](#)**

**Follow me  
on Twitter!**

@ConvertingColor