

Converting Colors

YUV(169.6260, -16.0846,
25.7610)

Have a look what the booklet for
YUV(169.6260, -16.0846, 25.7610)
contains.

YUV(169.6260, -16.0846, 25.7610)	3
<i>Conversions</i>	4
<i>Details</i>	6
<i>Harmonies</i>	12
<i>Previews</i>	24
<i>Color Blindness Simulation</i>	28
<i>CSS Examples</i>	31

Color

**YUV(169.6260, -16.0846,
25.7610)**

Conversions

Conversions Part 1

Format	Color
Hex	C7A189
RGB	199, 161, 137
RGB Percent	78%, 63%, 54%
CMY	0.2196, 0.3686, 0.4627
CMYK	0.00, 0.19, 0.31, 0.22
HSL	23°, 36%, 66%
HSV	23°, 31%, 78%
XYZ	40.8134, 39.4380, 29.1281
YIQ	169.6260, 30.3520, 0.5920

Conversions

Conversions Part 2

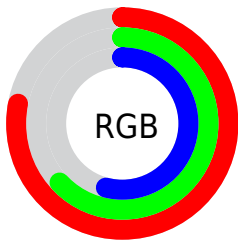
Format	Color
R_{YB}	199, 176, 137
Decimal	13083017
CIE Lab	69.07, 10.55, 17.80
CIE LCh	69, 20.690, 59.350
Yxy	39.4380, 0.3731, 0.3606
Android (android.graphics.Color)	4291273097 (0xFFC7A189)
YUV	169.6260, -16.0846, 25.7610
Hunter-Lab	62.7997, 6.1074, 16.4595

Details

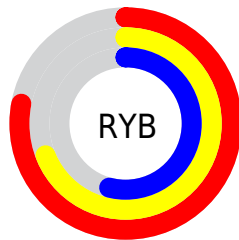
The YUV color **169.6260, -16.0846, 25.7610** is a light color, and the websafe version is hex **CC9999**. A complement of this color would be **166.3740, 16.0846, -25.7610**, and the grayscale version is **170.0000, 0.0000, 0.0000**.

A 20% lighter version of the original color is **224.6970, -17.1056, 26.5757**, and **116.9570, -14.7688, 23.7167** is the 20% darker color. If you saturate the color by 10%, you get **160.3020, -21.3479, 33.9381**, and if you desaturate by 10%, it is **178.9500, -10.8213, 17.5839**.

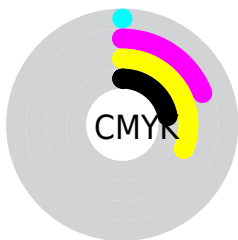
Distribution



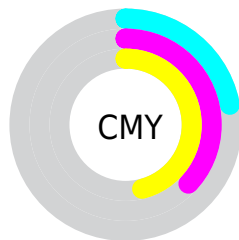
- Red (78%)
- Green (63%)
- Blue (54%)



- Red (78%)
- Yellow (69%)
- Blue (54%)



- Cyan (0%)
- Magenta (19%)
- Yellow (31%)
- Black (22%)



- Cyan (22%)
- Magenta (37%)
- Yellow (46%)

Brightness & Saturation Gradients

These gradients show how the YUV color 169.6260, -16.0846, 25.7610 changes by changing the brightness by 10 percent. The first figure shows a shift by +10% for each color and the second figure -10%.

Similar to the brightness gradients but the following saturation gradients show a change of the YUV color 169.6260, -16.0846, 25.7610 by changing the saturation by 10% instead.

■ 169.6260,
-16.0846, 25.7610

■ 169.6260,
-16.0846, 25.7610

255.0000, 0.0000,
0.0000

■ 143.1420,
-15.3530, 24.4315

■ 224.6970,
-17.1056, 26.5757

■ 116.9570,
-14.7688, 23.7167

■ 244.3250,
-12.9782, 9.3620

■ 92.4730, -14.0372,
22.3872

■ 254.0880, -3.4944,
0.7998

■ 68.5760, -13.5950,
20.5428

■ 45.9070, -12.2792,
18.4986

■ 24.3090, -11.9843,
17.2690

■ 4.7840, -2.3585,

9.8364

0.0000, 0.0000,
0.0000

169.6260,
-16.0846, 25.7610

169.6260,
-16.0846, 25.7610

160.3020,
-21.3479, 33.9381

178.9500,
-10.8213, 17.5839

150.9780,
-26.6112, 42.1153

188.2740, -5.5581,
9.4067

141.0670,
-31.5850, 50.8072

198.1850, -0.5842,
0.7148

131.7430,
-36.8483, 58.9844

207.5090, 4.6791,
-7.4624

122.5330,
-41.6748, 67.0616

216.8330, 9.9423,
-15.6395

■ 113.2090,
-46.9380, 75.2387

■ 225.9290, 14.3320,
-23.6167

■ 104.7000,
-51.6171, 82.7011

■ 232.9730, 10.8593,
-29.7943

■ 238.2560, 8.2548,
-34.4275

Harmonies

Analogous

The Analogous color harmony consists of three colors that are next to each other on the color wheel.



170.6790, -9.7017, 31.8535



169.6260, -16.0846, 25.7610



167.6800, -18.0832, 13.4356

Triad

The Triadic color harmony groups three colors that are evenly spaced from another and form a triangle on the color wheel.



169.6260, -16.0846, 25.7610



161.1870, 2.8658, -32.6130



170.3110, 15.1297, 0.6043

Complementary

The Complementary color scheme is a pair of colors which are on the opposite of each other on the color wheel.



169.6260, -16.0846, 25.7610



166.3740, 16.0846, -25.7610

Split Complementary

Split-complementary colors differ from the complementary color scheme. The scheme consists of three colors, the original color and two neighbors of the complement color.



166.9280, 19.2625, -18.3539



169.6260, -16.0846, 25.7610



161.2600, 12.1968, -38.8160

Square

The Square scheme is like the rectangle color scheme, but the four colors are evenly spaced on the color wheel.



169.6260, -16.0846, 25.7610



163.3430, -7.0711, -18.7178



163.4870, 18.0009, -33.7531



171.8850, 7.9447, 18.5179

Rectangle

The Rectangle color scheme consists of four colors that form a rectangle on the color wheel.



169.6260, -16.0846, 25.7610



166.3690, -16.4509, 3.1844



163.4870, 18.0009, -33.7531



169.4350, 17.0405, -5.6435

Sweetspot

The Sweet Spot groups the original color and five complimentary colors.



169.6260, -16.0846, 25.7610



244.1600, -5.9949, 9.5067



159.8700, 7.4591, 34.3170



121.0070, -3.9475, 6.1329



0.0000, 0.0000, 0.0000



128.0000, 0.0000, 0.0000

Same Dimension

The Same Dimension uses a secret algorithm to generate beautiful new colors.



169.6260, -16.0846, 25.7610



210.2380, -24.2743, 39.2563



187.8230, -25.0557, 9.8022



94.4520, -2.1948, 3.9886



85.7180, -42.2590, 67.7763



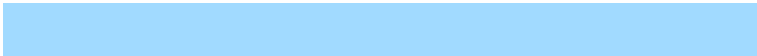
18.9820, -9.3581, 14.9248

Inverse Universe

The Inverse Universe completely reimagines the original color for something new.



166.3740, 16.0846, -25.7610



205.1750, 24.5637, -38.7415



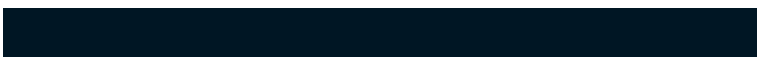
148.1770, 25.0557, -9.8022



94.5480, 2.1948, -3.9886



77.2820, 42.2590, -67.7763



17.0180, 9.3581, -14.9248

Previews

White Background



This preview shows how the YUV color 169.6260, -16.0846, 25.7610 looks on a white background.

Color Contrast Check

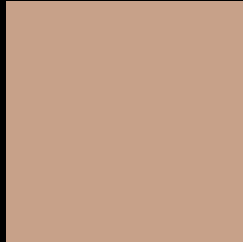
Large Text (above 18pt) WCAG AA × Fail

Any Text WCAG AA × Fail

Large Text (above 18pt) WCAG AAA × Fail

Any Text WCAG AAA × Fail

Black Background



This preview shows how the YUV color 169.6260, -16.0846, 25.7610 looks on a black background.

Color Contrast Check

Large Text (above 18pt) WCAG AA ✓ Pass

Any Text WCAG AA ✓ Pass

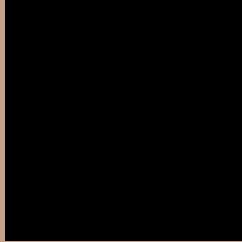
Large Text (above 18pt) WCAG AAA ✓ Pass

Any Text WCAG AAA ✓ Pass

If you want to check with other color combinations, try the [Color Contrast Checker](#).

YUV 169.6260, -16.0846, 25.7610

Background



This preview shows how black text looks on a background with the YUV color 169.6260, -16.0846, 25.7610.



This preview shows how white text looks on a background with the YUV color 169.6260, -16.0846, 25.7610.

25.7610.

Color Blindness Simulation

Color vision deficiency is a very complex topic, and I could not describe the different causes any better than Wikipedia does, so if you want to learn more, you should check out their [article about color blindness](#).

Dichromacy



Original Color

169.6260, -16.0846, 25.7610

Protanopia

167.9120, -13.2676, 8.8472

Deuteranopia

169.3160, -15.9318, 23.4019



Tritanopia

171.8230, -1.3917, 26.4652

Trichromacy



Original Color

169.6260, -16.0846, 25.7610

Protanomaly

168.4290, -14.0155, 15.4098

Deuteranomaly

169.6150, -16.0792, 24.0166

Tritanomaly

170.7430, -6.7753, 26.5354

Monochromacy



Original Color

169.6260, -16.0846, 25.7610

Achromatopsia

170.0000, 0.0000, 0.0000

Achromatomaly

170.1600, -5.9949, 9.5067

CSS Examples

Text

The CSS property to change the color of the text to YUV 169.6260, -16.0846, 25.7610 is called "color". The color property can be set on classes, ids or directly on the HTML element.

This example shows how text in the color `rgb(199, 161, 137)` looks like.

```
.text, #text, p{  
    color:rgb(199, 161, 137)  
}
```

If you want to add a text shadow in that color use the text-shadow property, you can generate a text shadow directly with our [CSS Text Shadow Generator](#).

Here you see how black text with a 4 pixel rgb(199, 161, 137) colored shadow looks like.

```
.shadow{ text-shadow: 4px 4px 2px rgb(199, 161, 137) }
```

Border

The CSS property to change the border of an element to YUV 169.6260, -16.0846, 25.7610 is called "border".

The border property can be set on classes, ids or directly on the HTML element.

This example shows the color as border, it can be applied via the CSS property "border" or "border-color".

```
.border, #border, table{ border:4px solid rgb(199, 161, 137) }
```


If only the border color should be changed use the property `border-color`.

```
.border{ border-color:rgb(199, 161, 137) }
```

If you want to add a box shadow in that color use:

Here you see how a box with a 4 pixel `rgb(199, 161, 137)` colored shadow looks like.

```
.boxshadow{ -moz-box-shadow:4px 4px 4px  
4px rgb(199, 161, 137); -webkit-box-  
shadow:4px 4px 4px 4px rgb(199, 161, 137);  
box-shadow:4px 4px 4px 4px rgb(199, 161,  
137) }
```

Background

The CSS property to change the background color of an element to YUV 169.6260, -16.0846, 25.7610 is called "background". The background property can be set on classes, ids or directly on the HTML element.

```
.background, #background, body{  
background: rgb(199, 161, 137) }
```

If only the background color should be changed can be used:

```
.background{ background-color: rgb(199,  
161, 137) }
```

This example shows the color as background, it is applied via the CSS property "background".

To optimize and compress your CSS code, you can use our [online CSS compressor and optimizer](#) based on csstidy. If you want to create a linear or radial gradient as background or border, check our [CSS Gradient Generator](#).

Hey! You found this booklet interesting? Support Converting Colors with the new Membership Option!

The pro membership hides all ads, plus gives you double the colors in the color bucket, and more awesome pro features!

[Learn more, Memberships starting at \\$2.50/m!](#)

**Follow me
on Twitter!**

@ConvertingColor