

Converting Colors

YUV(169.6400, -23.9795,
38.0267)

Have a look what the booklet for
YUV(169.6400, -23.9795, 38.0267)
contains.

YUV(169.6400, -23.9795, 38.0267)	3
<i>Conversions</i>	4
<i>Details</i>	6
<i>Harmonies</i>	12
<i>Previews</i>	24
<i>Color Blindness Simulation</i>	28
<i>CSS Examples</i>	31

Color

**YUV(169.6400, -23.9795,
38.0267)**

Conversions

Conversions Part 1

Format	Color
Hex	D59D79
RGB	213, 157, 121
RGB Percent	84%, 62%, 47%
CMY	0.1647, 0.3843, 0.5255
CMYK	0.00, 0.26, 0.43, 0.16
HSL	23°, 52%, 65%
HSV	23°, 43%, 84%
XYZ	42.9487, 39.6406, 23.4769
YIQ	169.6400, 44.9320, 0.6760

Conversions

Conversions Part 2

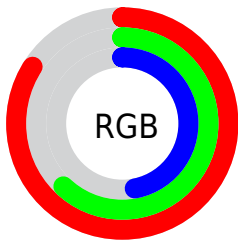
Format	Color
R_{YB}	213, 180, 121
Decimal	13999481
CIE _{Lab}	69.21, 16.39, 26.99
CIE _{LCh}	69, 31.575, 58.734
Yxy	39.6406, 0.4049, 0.3737
Android (android.graphics.Color)	4292189561 (0xFFD59D79)
YUV	169.6400, -23.9795, 38.0267
Hunter-Lab	62.9607, 11.5827, 21.9644

Details

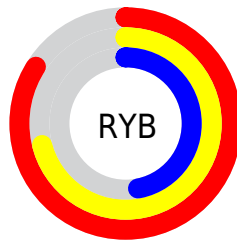
The YUV color **169.6400, -23.9795, 38.0267** is a light color, and the websafe version is hex **CC9966**. A complement of this color would be **164.3600, 23.9795, -38.0267**, and the grayscale version is **170.0000, 0.0000, 0.0000**.

A 20% lighter version of the original color is **220.5250, -22.9368, 30.2346**, and **117.0740, -22.2215, 34.1381** is the 20% darker color. If you saturate the color by 10%, you get **159.6150, -29.3902, 46.8186**, and if you desaturate by 10%, it is **179.6650, -18.5688, 29.2348**.

Distribution



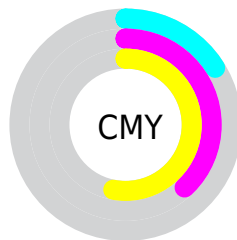
- Red (84%)
- Green (62%)
- Blue (47%)



- Red (84%)
- Yellow (71%)
- Blue (47%)



- Cyan (0%)
- Magenta (26%)
- Yellow (43%)
- Black (16%)



- Cyan (16%)
- Magenta (38%)
- Yellow (53%)

Brightness & Saturation Gradients

These gradients show how the YUV color 169.6400, -23.9795, 38.0267 changes by changing the brightness by 10 percent. The first figure shows a shift by +10% for each color and the second figure -10%.

Similar to the brightness gradients but the following saturation gradients show a change of the YUV color 169.6400, -23.9795, 38.0267 by changing the saturation by 10% instead.

■ 169.6400,
-23.9795, 38.0267

■ 169.6400,
-23.9795, 38.0267

255.0000, 0.0000,
0.0000

■ 142.8570,
-23.1005, 36.0824

■ 220.5250,
-22.9368, 30.2346

■ 117.0740,
-22.2215, 34.1381

■ 240.0390,
-19.2462, 13.1208

■ 91.7040, -21.0531,
32.7086

■ 252.0360,
-11.3567, 2.5994

■ 67.6220, -20.0266,
30.1495

■ 44.1980, -20.3106,
27.8904

■ 23.7550, -11.7112,
23.0169

■ 7.8880, -3.3958,

15.8842

■ 0.0000, 0.0000,
0.0000

■ 169.6400,
-23.9795, 38.0267

■ 169.6400,
-23.9795, 38.0267

■ 159.6150,
-29.3902, 46.8186

■ 179.6650,
-18.5688, 29.2348

■ 149.4760,
-35.2377, 55.7105

■ 189.8040,
-12.7214, 20.3429

■ 139.4510,
-40.6483, 64.5025

■ 199.8290, -7.3107,
11.5510

■ 129.4260,
-46.0590, 73.2944

■ 209.8540, -1.9000,
2.7590

■ 119.2870,
-51.9065, 82.1863

■ 219.9930, 3.9475,
-6.1329

■ 112.4080,
-55.4171, 88.2192

■ 230.0180, 9.3581,
-14.9248

■ 238.3330, 8.2168,
-22.2170

■ 242.4420, 6.1911,
-25.8206

Harmonies

Analogous

The Analogous color harmony consists of three colors that are next to each other on the color wheel.



171.0400, -13.8237, 47.3229



169.6400, -23.9795, 38.0267



167.6070, -27.4143, 19.6387

Triad

The Triadic color harmony groups three colors that are evenly spaced from another and form a triangle on the color wheel.



169.6400, -23.9795, 38.0267



155.7390, 5.5517, -54.1451



171.1890, 23.5708, -0.1658

Complementary

The Complementary color scheme is a pair of colors which are on the opposite of each other on the color wheel.



169.6400, -23.9795, 38.0267



164.3600, 23.9795, -38.0267

Split Complementary

Split-complementary colors differ from the complementary color scheme. The scheme consists of three colors, the original color and two neighbors of the complement color.



165.2990, 29.9256, -31.8342



169.6400, -23.9795, 38.0267



152.0650, 21.1670, -69.3400

Square

The Square scheme is like the rectangle color scheme, but the four colors are evenly spaced on the color wheel.



169.6400, -23.9795, 38.0267



160.5390, -11.1117, -29.4137



156.7100, 29.7230, -60.2587



173.4930, 12.5750, 26.7546

Rectangle

The Rectangle color scheme consists of four colors that form a rectangle on the color wheel.



169.6400, -23.9795, 38.0267



165.3770, -25.3289, 4.0544



156.7100, 29.7230, -60.2587



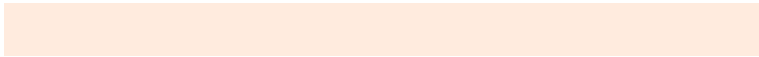
169.5190, 26.3661, -10.1022

Sweetspot

The Sweet Spot groups the original color and five complimentary colors.



169.6400, -23.9795, 38.0267



239.4980, -8.6265, 13.5953



155.0060, 11.3360, 50.8607



117.9750, -5.4107, 8.7919



0.0000, 0.0000, 0.0000



128.0000, 0.0000, 0.0000

Same Dimension

The Same Dimension uses a secret algorithm to generate beautiful new colors.



169.6400, -23.9795, 38.0267



192.2910, -34.6535, 54.9958



196.0550, -37.0021, 14.8608



102.2240, -3.0684, 4.1886



90.4580, -44.5958, 70.6353



22.8360, -11.2581, 17.6838

Inverse Universe

The Inverse Universe completely reimagines the original color for something new.



164.3600, 23.9795, -38.0267



184.7090, 34.6535, -54.9958



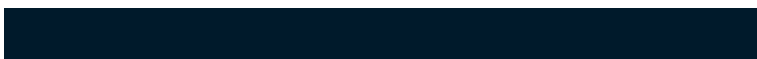
137.9450, 37.0021, -14.8608



101.3630, 2.7790, -4.7034



80.5420, 44.5958, -70.6353



20.1640, 11.2581, -17.6838

Previews

White Background



This preview shows how the YUV color 169.6400, -23.9795, 38.0267 looks on a white background.

Color Contrast Check

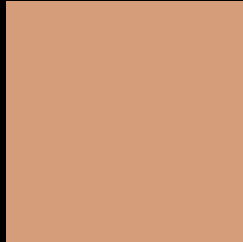
Large Text (above 18pt) WCAG AA × Fail

Any Text WCAG AA × Fail

Large Text (above 18pt) WCAG AAA × Fail

Any Text WCAG AAA × Fail

Black Background



This preview shows how the YUV color 169.6400, -23.9795, 38.0267 looks on a black background.

Color Contrast Check

Large Text (above 18pt) WCAG AA ✓ Pass

Any Text WCAG AA ✓ Pass

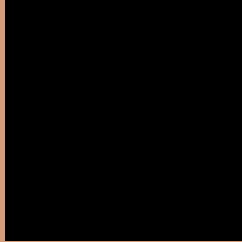
Large Text (above 18pt) WCAG AAA ✓ Pass

Any Text WCAG AAA ✓ Pass

If you want to check with other color combinations, try the [Color Contrast Checker](#).

YUV 169.6400, -23.9795, 38.0267

Background



This preview shows how black text looks on a background with the YUV color 169.6400, -23.9795, 38.0267.



This preview shows how white text looks on a background with the YUV color 169.6400, -23.9795,

Color Blindness Simulation

Color vision deficiency is a very complex topic, and I could not describe the different causes any better than Wikipedia does, so if you want to learn more, you should check out their [article about color blindness](#).

Dichromacy



Original Color

169.6400, -23.9795, 38.0267

Protanopia

167.6860, -20.5512, 11.6764

Deuteranopia

168.8730, -24.0944, 28.1754



Tritanopia

172.1020, -4.4873, 39.3755

Trichromacy



Original Color

169.6400, -23.9795, 38.0267

Protanomaly

168.6980, -22.0361, 21.3129

Deuteranomaly

168.8950, -24.1052, 31.6641

Tritanomaly

171.2670, -11.4706, 39.2308

Monochromacy



Original Color

169.6400, -23.9795, 38.0267

Achromatopsia

170.0000, 0.0000, 0.0000

Achromatomaly

169.7970, -8.7739, 14.2100

CSS Examples

Text

The CSS property to change the color of the text to YUV 169.6400, -23.9795, 38.0267 is called "color". The color property can be set on classes, ids or directly on the HTML element.

This example shows how text in the color `rgb(213, 157, 121)` looks like.

```
.text, #text, p{  
    color:rgb(213, 157, 121)  
}
```

If you want to add a text shadow in that color use the text-shadow property, you can generate a text shadow directly with our [CSS Text Shadow Generator](#).

Here you see how black text with a 4 pixel rgb(213, 157, 121) colored shadow looks like.

```
.shadow{ text-shadow: 4px 4px 2px rgb(213, 157, 121) }
```

Border

The CSS property to change the border of an element to YUV 169.6400, -23.9795, 38.0267 is called "border".

The border property can be set on classes, ids or directly on the HTML element.

This example shows the color as border, it can be applied via the CSS property "border" or "border-color".

```
.border, #border, table{ border:4px solid rgb(213, 157, 121) }
```


If only the border color should be changed use the property border-color.

```
.border{ border-color:rgb(213, 157, 121) }
```

If you want to add a box shadow in that color use:

Here you see how a box with a 4 pixel rgb(213, 157, 121) colored shadow looks like.

```
.boxshadow{ -moz-box-shadow:4px 4px 4px  
4px rgb(213, 157, 121); -webkit-box-  
shadow:4px 4px 4px 4px rgb(213, 157, 121);  
box-shadow:4px 4px 4px 4px rgb(213, 157,  
121) }
```

Background

The CSS property to change the background color of an element to YUV 169.6400, -23.9795, 38.0267 is called "background". The background property can be set on classes, ids or directly on the HTML element.

```
.background, #background, body{  
background: rgb(213, 157, 121) }
```

If only the background color should be changed can be used:

```
.background{ background-color: rgb(213,  
157, 121) }
```

This example shows the color as background, it is applied via the CSS property "background".

To optimize and compress your CSS code, you can use our [online CSS compressor and optimizer](#) based on csstidy. If you want to create a linear or radial gradient as background or border, check our [CSS Gradient Generator](#).

Hey! You found this booklet interesting? Support Converting Colors with the new Membership Option!

The pro membership hides all ads, plus gives you double the colors in the color bucket, and more awesome pro features!

[Learn more, Memberships starting at \\$2.50/m!](#)

**Follow me
on Twitter!**

@ConvertingColor