

Converting Colors

YUV(169.6640, -13.6384,
34.4977)

Have a look what the booklet for
YUV(169.6640, -13.6384, 34.4977)
contains.

YUV(169.6640, -13.6384, 34.4977)	3
<i>Conversions</i>	4
<i>Details</i>	6
<i>Harmonies</i>	12
<i>Previews</i>	24
<i>Color Blindness Simulation</i>	28
<i>CSS Examples</i>	31

Color

**YUV(169.6640, -13.6384,
34.4977)**

Conversions

Conversions Part 1

Format	Color
Hex	D19B8E
RGB	209, 155, 142
RGB Percent	82%, 61%, 56%
CMY	0.1804, 0.3922, 0.4431
CMYK	0.00, 0.26, 0.32, 0.18
HSL	12°, 42%, 69%
HSV	12°, 32%, 82%
XYZ	42.8983, 38.9510, 30.8485
YIQ	169.6640, 36.3570, 7.4050

Conversions

Conversions Part 2

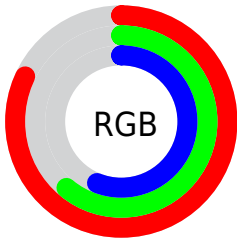
Format	Color
R _Y B	209, 158, 142
Decimal	13736846
CIE Lab	68.72, 18.38, 14.70
CIE LCh	69, 23.538, 38.660
Yxy	38.9510, 0.3806, 0.3456
Android (android.graphics.Color)	4291926926 (0xFFD19B8E)
YUV	169.6640, -13.6384, 34.4977
Hunter-Lab	62.4107, 13.4741, 14.3815

Details

The YUV color $169.6640, -13.6384, 34.4977$ is a light color, and the websafe version is hex $CC9999$. A complement of this color would be $181.3360, 13.6384, -34.4977$, and the grayscale version is $170.0000, 0.0000, 0.0000$.

A 20% lighter version of the original color is $221.8590, -12.7485, 29.0647$, and $117.2830, -12.4645, 31.3238$ is the 20% darker color. If you saturate the color by 10%, you get $157.2910, -17.8915, 45.3488$, and if you desaturate by 10%, it is $182.0370, -9.3852, 23.6466$.

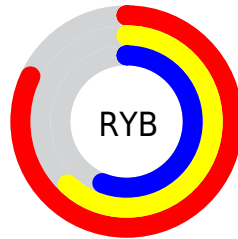
Distribution



Red (82%)

Green (61%)

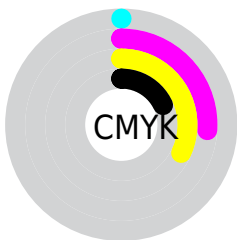
Blue (56%)



Red (82%)

Yellow (62%)

Blue (56%)

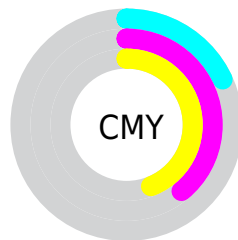


Cyan (0%)

Magenta (26%)

Yellow (32%)

Black (18%)



Cyan (18%)

Magenta (39%)

Yellow (44%)

Brightness & Saturation Gradients

These gradients show how the YUV color 169.6640, -13.6384, 34.4977 changes by changing the brightness by 10 percent. The first figure shows a shift by +10% for each color and the second figure -10%.

Similar to the brightness gradients but the following saturation gradients show a change of the YUV color 169.6640, -13.6384, 34.4977 by changing the saturation by 10% instead.

■ 169.6640,
-13.6384, 34.4977

■ 169.6640,
-13.6384, 34.4977

■ 255.0000, 0.0000,
0.0000

■ 143.0660,
-13.3435, 33.2681

■ 221.8590,
-12.7485, 29.0647

■ 117.2830,
-12.4645, 31.3238

■ 241.4870, -8.6211,
11.8509

■ 91.7990, -11.7329,
29.9943

■ 254.6580, -1.3104,
0.2999

■ 68.0160, -10.8539,
28.0500

■ 45.2330, -9.9749,
26.1057

■ 22.2930, -10.9904,
25.1760

■ 7.8880, -3.3958,

15.8842

■ 0.0000, 0.0000,
0.0000

■ 169.6640,
-13.6384, 34.4977

■ 169.6640,
-13.6384, 34.4977

■ 157.2910,
-17.8915, 45.3488

■ 182.0370, -9.3852,
23.6466

■ 144.9180,
-22.1446, 56.1999

■ 194.4100, -5.1321,
12.7954

■ 132.5450,
-26.3977, 67.0510

■ 206.7830, -0.8790,
1.9443

■ 120.7590,
-30.9402, 77.3874

■ 218.5690, 3.6635,
-8.3920

■ 108.3860,
-35.1933, 88.2385

■ 230.9420, 7.9166,
-19.2431

■ 96.1270, -39.0096,
98.9896

■ 241.2460, 6.7807,
-28.2797

■ 86.5580, -42.6731,
107.3816

Harmonies

Analogous

The Analogous color harmony consists of three colors that are next to each other on the color wheel.



170.7810, -4.3290, 35.2721



169.6640, -13.6384, 34.4977



168.1160, -19.2842, 25.3313

Triad

The Triadic color harmony groups three colors that are evenly spaced from another and form a triangle on the color wheel.



169.6640, -13.6384, 34.4977



160.2710, -4.5706, -27.4247



166.7050, 20.8514, -14.6503

Complementary

The Complementary color scheme is a pair of colors which are on the opposite of each other on the color wheel.



169.6640, -13.6384, 34.4977



181.3360, 13.6384, -34.4977

Split Complementary

Split-complementary colors differ from the complementary color scheme. The scheme consists of three colors, the original color and two neighbors of the complement color.



162.5130, 21.9321, -34.6529



169.6640, -13.6384, 34.4977



158.5710, 7.1135, -41.7198

Square

The Square scheme is like the rectangle color scheme, but the four colors are evenly spaced on the color wheel.



169.6640, -13.6384, 34.4977



163.1610, -14.3764, -8.9112



158.4810, 17.0179, -45.1488



170.3550, 15.1080, 7.5817

Rectangle

The Rectangle color scheme consists of four colors that form a rectangle on the color wheel.



169.6640, -13.6384, 34.4977



166.7080, -20.5620, 15.1651



158.4810, 17.0179, -45.1488



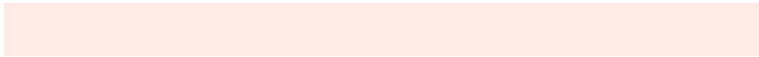
165.8890, 21.7467, -21.8277

Sweetspot

The Sweet Spot groups the original color and five complimentary colors.



169.6640, -13.6384, 34.4977



239.8230, -4.8427, 13.3102



168.3030, 14.1476, 35.6913



118.5450, -3.2267, 8.2920



0.0000, 0.0000, 0.0000



128.0000, 0.0000, 0.0000

Same Dimension

The Same Dimension uses a secret algorithm to generate beautiful new colors.



169.6640, -13.6384, 34.4977



198.1560, -19.7969, 49.8522



189.0350, -23.1883, 17.5093



98.4630, -2.2003, 5.7329



69.6030, -34.3143, 86.2942



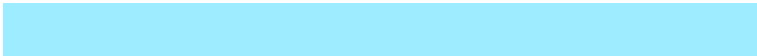
16.9550, -8.3588, 21.0875

Inverse Universe

The Inverse Universe completely reimagines the original color for something new.



181.3360, 13.6384, -34.4977



214.8440, 19.7969, -49.8522



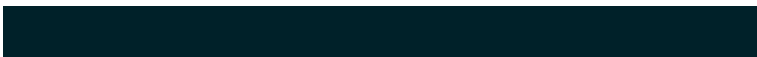
161.9650, 23.1883, -17.5093



100.5370, 2.2003, -5.7329



98.9840, 34.0249, -86.8090



24.0450, 8.3588, -21.0875

Previews

White Background



This preview shows how the YUV color 169.6640, -13.6384, 34.4977 looks on a white background.

Color Contrast Check

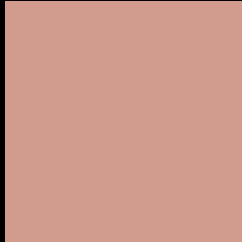
Large Text (above 18pt) WCAG AA × Fail

Any Text WCAG AA × Fail

Large Text (above 18pt) WCAG AAA × Fail

Any Text WCAG AAA × Fail

Black Background



This preview shows how the YUV color 169.6640, -13.6384, 34.4977 looks on a black background.

Color Contrast Check

Large Text (above 18pt) WCAG AA ✓ Pass

Any Text WCAG AA ✓ Pass

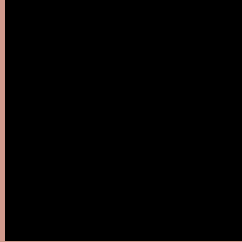
Large Text (above 18pt) WCAG AAA ✓ Pass

Any Text WCAG AAA ✓ Pass

If you want to check with other color combinations, try the [Color Contrast Checker](#).

YUV 169.6640, -13.6384, 34.4977

Background



This preview shows how black text looks on a background with the YUV color 169.6640, -13.6384, 34.4977.



This preview shows how white text looks on a background with the YUV color 169.6640, -13.6384,

34.4977.

Color Blindness Simulation

Color vision deficiency is a very complex topic, and I could not describe the different causes any better than Wikipedia does, so if you want to learn more, you should check out their [article about color blindness](#).

Dichromacy



Original Color

169.6640, -13.6384, 34.4977

Protanopia

167.5250, -9.6258, 7.4326

Deuteranopia

169.1740, -13.8898, 21.7724



Tritanopia

170.8950, -3.8922, 35.1721

Trichromacy



Original Color

169.6640, -13.6384, 34.4977

Protanomaly

168.5370, -11.1107, 17.0691

Deuteranomaly

168.9080, -13.7586, 26.3907

Tritanomaly

170.2710, -7.5286, 34.8423

Monochromacy



Original Color

169.6640, -13.6384, 34.4977

Achromatopsia

170.0000, 0.0000, 0.0000

Achromatomaly

170.1110, -4.9847, 12.1807

CSS Examples

Text

The CSS property to change the color of the text to YUV 169.6640, -13.6384, 34.4977 is called "color". The color property can be set on classes, ids or directly on the HTML element.

This example shows how text in the color `rgb(209, 155, 142)` looks like.

```
.text, #text, p{  
    color:rgb(209, 155, 142)  
}
```

If you want to add a text shadow in that color use the text-shadow property, you can generate a text shadow directly with our [CSS Text Shadow Generator](#).

Here you see how black text with a 4 pixel rgb(209, 155, 142) colored shadow looks like.

```
.shadow{ text-shadow: 4px 4px 2px rgb(209, 155, 142) }
```

Border

The CSS property to change the border of an element to YUV 169.6640, -13.6384, 34.4977 is called "border".

The border property can be set on classes, ids or directly on the HTML element.

This example shows the color as border, it can be applied via the CSS property "border" or "border-color".

```
.border, #border, table{ border:4px solid rgb(209, 155, 142) }
```


If only the border color should be changed use the property `border-color`.

```
.border{ border-color:rgb(209, 155, 142) }
```

If you want to add a box shadow in that color use:

Here you see how a box with a 4 pixel `rgb(209, 155, 142)` colored shadow looks like.

```
.boxshadow{ -moz-box-shadow:4px 4px 4px 4px rgb(209, 155, 142); -webkit-box-shadow:4px 4px 4px 4px rgb(209, 155, 142); box-shadow:4px 4px 4px 4px rgb(209, 155, 142) }
```

Background

The CSS property to change the background color of an element to YUV 169.6640, -13.6384, 34.4977 is called "background". The background property can be set on classes, ids or directly on the HTML element.

```
.background, #background, body{  
background: rgb(209, 155, 142) }
```

If only the background color should be changed can be used:

```
.background{ background-color: rgb(209,  
155, 142) }
```

This example shows the color as background, it is applied via the CSS property "background".

To optimize and compress your CSS code, you can use our [online CSS compressor and optimizer](#) based on csstidy. If you want to create a linear or radial gradient as background or border, check our [CSS Gradient Generator](#).

Hey! You found this booklet interesting? Support Converting Colors with the new Membership Option!

The pro membership hides all ads, plus gives you double the colors in the color bucket, and more awesome pro features!

[Learn more, Memberships starting at \\$2.50/m!](#)

**Follow me
on Twitter!**

@ConvertingColor