

Converting Colors

YUV(169.8910, 2.0257, 3.6036)

Have a look what the booklet for
YUV(169.8910, 2.0257, 3.6036)
contains.

YUV(169.8910, 2.0257, 3.6036)	3
<i>Conversions</i>	4
<i>Details</i>	6
<i>Harmonies</i>	12
<i>Previews</i>	24
<i>Color Blindness Simulation</i>	28
<i>CSS Examples</i>	31

Color

**YUV(169.8910, 2.0257,
3.6036)**

Conversions

Conversions Part 1

Format	Color
Hex	AEA7AE
RGB	174, 167, 174
RGB Percent	68%, 65%, 68%
CMY	0.3176, 0.3451, 0.3176
CMYK	0.00, 0.04, 0.00, 0.32
HSL	300°, 4%, 67%
HSV	300°, 4%, 68%
XYZ	38.9143, 39.6921, 45.6547
YIQ	169.8910, 1.9250, 3.6610

Conversions

Conversions Part 2

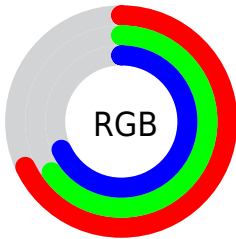
Format	Color
RYB	174, 167, 174
Decimal	11446190
CIELab	69.25, 3.82, -2.71
CIELCh	69, 4.683, 324.609
Yxy	39.6921, 0.3132, 0.3194
Android (android.graphics.Color)	4289636270 (0xFFAEA7AE)
YUV	169.8910, 2.0257, 3.6036
Hunter-Lab	63.0017, 0.0012, 1.1361

Details

The YUV color **169.8910, 2.0257, 3.6036** is a light color, and the websafe version is hex **999999**. A complement of this color would be **171.1090, -2.0257, -3.6036**, and the grayscale version is **170.0000, 0.0000, 0.0000**.

A 20% lighter version of the original color is **224.8910, 2.0257, 3.6036**, and **117.8910, 2.0257, 3.6036** is the 20% darker color. If you saturate the color by 10%, you get **159.9120, 6.9454, 12.3552**, and if you desaturate by 10%, it is **179.8700, -2.8939, -5.1480**.

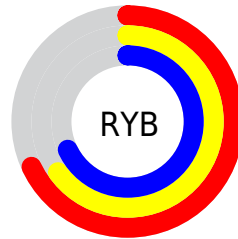
Distribution



Red (68%)

Green (65%)

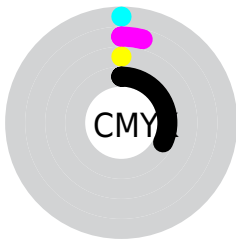
Blue (68%)



Red (68%)

Yellow (65%)

Blue (68%)

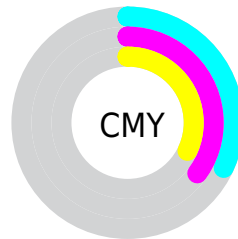


Cyan (0%)

Magenta (4%)

Yellow (0%)

Black (32%)



Cyan (32%)

Magenta (35%)

Yellow (32%)

Brightness & Saturation Gradients

These gradients show how the YUV color 169.8910, 2.0257, 3.6036 changes by changing the brightness by 10 percent. The first figure shows a shift by +10% for each color and the second figure -10%.

Similar to the brightness gradients but the following saturation gradients show a change of the YUV color 169.8910, 2.0257, 3.6036 by changing the saturation by 10% instead.

■ 169.8910, 2.0257,
3.6036

■ 169.8910, 2.0257,
3.6036

255.0000, 0.0000,
0.0000

■ 143.4780, 1.7363,
3.0888

■ 224.8910, 2.0257,
3.6036

■ 117.8910, 2.0257,
3.6036

■ 252.6520, 1.1576,
2.0592

■ 93.4780, 1.7363,
3.0888

■ 69.4780, 1.7363,
3.0888

■ 47.4780, 1.7363,
3.0888

■ 26.4780, 1.7363,
3.0888

■ 0.3420, 1.3104,

-0.2999

■ 0.0000, 0.0000,
0.0000

■ 169.8910, 2.0257,
3.6036

■ 169.8910, 2.0257,
3.6036

■ 159.9120, 6.9454,
12.3552

■ 179.8700, -2.8939,
-5.1480

■ 149.3460, 12.1544,
21.6216

■ 190.4360, -8.1029,
-14.4144

■ 139.3670, 17.0741,
30.3731

■ 200.4150,
-13.0226, -23.1660

■ 128.8010, 22.2831,
39.6395

■ 210.9810,
-18.2316, -32.4323

■ 118.8220, 27.2028,
48.3911

■ 220.9600,
-23.1513, -41.1839

■ 108.8430, 32.1224,
57.1427

■ 221.5470,
-23.4407, -41.6987

■ 98.2770, 37.3314,
66.4091

■ 88.2980, 42.2511,
75.1607

■ 77.7320, 47.4601,
84.4270

Harmonies

Analogous

The Analogous color harmony consists of three colors that are next to each other on the color wheel.



169.3250, 3.7838, -0.2850



169.8910, 2.0257, 3.6036



169.7450, 0.1257, 6.3626

Triad

The Triadic color harmony groups three colors that are evenly spaced from another and form a triangle on the color wheel.



169.8910, 2.0257, 3.6036



168.9960, -3.9420, 4.3885



168.1130, 1.9163, -7.9921

Complementary

The Complementary color scheme is a pair of colors which are on the opposite of each other on the color wheel.



169.8910, 2.0257, 3.6036



171.1090, -2.0257, -3.6036

Split Complementary

Split-complementary colors differ from the complementary color scheme. The scheme consists of three colors, the original color and two neighbors of the complement color.



167.9560, 0.0217, -6.9774



169.8910, 2.0257, 3.6036



168.6750, -3.7838, 0.2850

Square

The Square scheme is like the rectangle color scheme, but the four colors are evenly spaced on the color wheel.



169.8910, 2.0257, 3.6036



169.4200, -3.6581, 6.6477



168.1090, -2.0257, -3.6036



168.2810, 3.8055, -7.2624

Rectangle

The Rectangle color scheme consists of four colors that form a rectangle on the color wheel.



169.8910, 2.0257, 3.6036



169.7020, -1.3321, 7.2773



168.1090, -2.0257, -3.6036



167.9990, 1.4795, -7.8921

Sweetspot

The Sweet Spot groups the original color and five complimentary colors.



169.8910, 2.0257, 3.6036



225.8260, 0.5788, 1.0296



167.7980, 3.0576, -0.6998



114.4130, 0.2894, 0.5148



242.0000, 0.0000, 0.0000



115.0000, 0.0000, 0.0000

Same Dimension

The Same Dimension uses a secret algorithm to generate beautiful new colors.



169.8910, 2.0257, 3.6036



220.5430, 3.1833, 5.6628



169.5490, 0.7153, 3.9035



83.4780, 1.7363, 3.0888



61.9500, 43.4087, 77.2198



9.4990, 6.6560, 11.8404

Inverse Universe

The Inverse Universe completely reimagines the original color for something new.



169.8910, 2.0257, 3.6036



220.5430, 3.1833, 5.6628



171.5650, -0.2785, -4.0035



83.4780, 1.7363, 3.0888



61.9500, 43.4087, 77.2198



9.4990, 6.6560, 11.8404

Previews

White Background



This preview shows how the YUV color 169.8910, 2.0257, 3.6036 looks on a white background.

Color Contrast Check

Large Text (above 18pt) WCAG AA × Fail

Any Text WCAG AA × Fail

Large Text (above 18pt) WCAG AAA × Fail

Any Text WCAG AAA × Fail

Black Background



This preview shows how the YUV color 169.8910, 2.0257, 3.6036 looks on a black background.

Color Contrast Check

Large Text (above 18pt) WCAG AA ✓ Pass

Any Text WCAG AA ✓ Pass

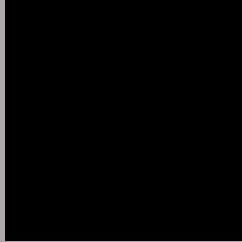
Large Text (above 18pt) WCAG AAA ✓ Pass

Any Text WCAG AAA ✓ Pass

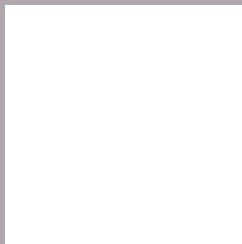
If you want to check with other color combinations, try the [Color Contrast Checker](#).

YUV 169.8910, 2.0257, 3.6036

Background



This preview shows how black text looks on a background with the YUV color 169.8910, 2.0257, 3.6036.



This preview shows how white text looks on a background with the YUV color 169.8910, 2.0257,

Color Blindness Simulation

Color vision deficiency is a very complex topic, and I could not describe the different causes any better than Wikipedia does, so if you want to learn more, you should check out their [article about color blindness](#).

Dichromacy



Original Color

169.8910, 2.0257, 3.6036

Protanopia

169.3960, 2.7628, 0.5297

Deuteranopia

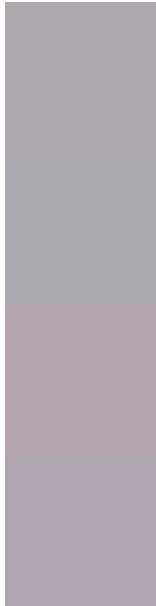
170.9350, 2.0040, 10.5810



Tritanopia

170.1730, 4.3517, 4.2333

Trichromacy



Original Color

169.8910, 2.0257, 3.6036

Protanomaly

169.6950, 2.6154, 1.1445

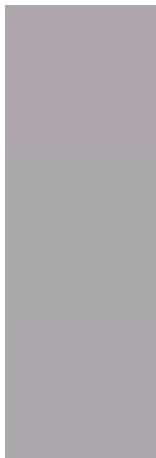
Deuteranomaly

170.6250, 2.1569, 8.2219

Tritanomaly

169.9450, 3.4781, 4.4332

Monochromacy



Original Color

169.8910, 2.0257, 3.6036

Achromatopsia

170.0000, 0.0000, 0.0000

Achromatomaly

169.8260, 0.5788, 1.0296

CSS Examples

Text

The CSS property to change the color of the text to YUV 169.8910, 2.0257, 3.6036 is called "color". The color property can be set on classes, ids or directly on the HTML element.

This example shows how text in the color `rgb(174, 167, 174)` looks like.

```
.text, #text, p{  
    color:rgb(174, 167, 174)  
}
```

If you want to add a text shadow in that color use the text-shadow property, you can generate a text shadow directly with our [CSS Text Shadow Generator](#).

Here you see how black text with a 4 pixel rgb(174, 167, 174) colored shadow looks like.

```
.shadow{ text-shadow: 4px 4px 2px rgb(174, 167, 174) }
```

Border

The CSS property to change the border of an element to YUV 169.8910, 2.0257, 3.6036 is called "border". The border property can be set on classes, ids or directly on the HTML element.

This example shows the color as border, it can be applied via the CSS property "border" or "border-color".

```
.border, #border, table{ border:4px solid rgb(174, 167, 174) }
```


If only the border color should be changed use the property `border-color`.

```
.border{ border-color:rgb(174, 167, 174) }
```

If you want to add a box shadow in that color use:

Here you see how a box with a 4 pixel `rgb(174, 167, 174)` colored shadow looks like.

```
.boxshadow{ -moz-box-shadow:4px 4px 4px  
4px rgb(174, 167, 174); -webkit-box-  
shadow:4px 4px 4px 4px rgb(174, 167, 174);  
box-shadow:4px 4px 4px 4px rgb(174, 167,  
174) }
```

Background

The CSS property to change the background color of an element to YUV 169.8910, 2.0257, 3.6036 is called "background". The background property can be set on classes, ids or directly on the HTML element.

```
.background, #background, body{  
background: rgb(174, 167, 174) }
```

If only the background color should be changed can be used:

```
.background{ background-color: rgb(174,  
167, 174) }
```

This example shows the color as background, it is applied via the CSS property "background".

To optimize and compress your CSS code, you can use our [online CSS compressor and optimizer](#) based on csstidy. If you want to create a linear or radial gradient as background or border, check our [CSS Gradient Generator](#).

Hey! You found this booklet interesting? Support Converting Colors with the new Membership Option!

The pro membership hides all ads, plus gives you double the colors in the color bucket, and more awesome pro features!

[Learn more, Memberships starting at \\$2.50/m!](#)

**Follow me
on Twitter!**

@ConvertingColor