

Converting Colors

YUV(169.9310, -15.2490,
37.7715)

Have a look what the booklet for
YUV(169.9310, -15.2490, 37.7715)
contains.

YUV(169.9310, -15.2490, 37.7715)	3
<i>Conversions</i>	4
<i>Details</i>	6
<i>Harmonies</i>	12
<i>Previews</i>	24
<i>Color Blindness Simulation</i>	28
<i>CSS Examples</i>	31

Color

**YUV(169.9310, -15.2490,
37.7715)**

Conversions

Conversions Part 1

Format	Color
Hex	D59A8B
RGB	213, 154, 139
RGB Percent	84%, 60%, 55%
CMY	0.1647, 0.3961, 0.4549
CMYK	0.00, 0.28, 0.35, 0.16
HSL	12°, 47%, 69%
HSV	12°, 35%, 84%
XYZ	43.6564, 39.1214, 29.6763
YIQ	169.9310, 39.9790, 7.8430

Conversions

Conversions Part 2

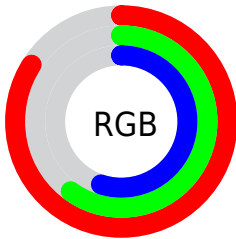
Format	Color
R _Y B	213, 158, 139
Decimal	13998731
CIE Lab	68.84, 20.09, 16.60
CIE LCh	69, 26.065, 39.564
Yxy	39.1214, 0.3882, 0.3479
Android (android.graphics.Color)	4292188811 (0xFFD59A8B)
YUV	169.9310, -15.2490, 37.7715
Hunter-Lab	62.5471, 15.1312, 15.6520

Details

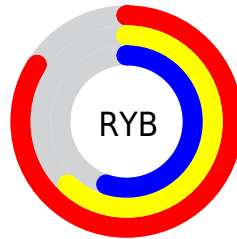
The YUV color **169.9310, -15.2490, 37.7715** is a light color, and the websafe version is hex **CC9999**. A complement of this color would be **182.0690, 15.2490, -37.7715**, and the grayscale version is **170.0000, 0.0000, 0.0000**.

A 20% lighter version of the original color is **220.9300, -13.7695, 29.8794**, and **117.5500, -14.0751, 34.5977** is the 20% darker color. If you saturate the color by 10%, you get **157.5580, -19.5021, 48.6226**, and if you desaturate by 10%, it is **182.3040, -10.9959, 26.9204**.

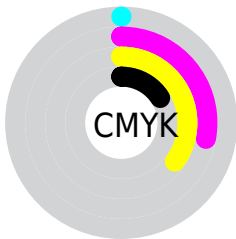
Distribution



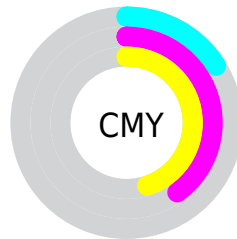
- Red (84%)
- Green (60%)
- Blue (55%)



- Red (84%)
- Yellow (62%)
- Blue (55%)



- Cyan (0%)
- Magenta (28%)
- Yellow (35%)
- Black (16%)



- Cyan (16%)
- Magenta (40%)
- Yellow (45%)

Brightness & Saturation Gradients

These gradients show how the YUV color 169.9310, -15.2490, 37.7715 changes by changing the brightness by 10 percent. The first figure shows a shift by +10% for each color and the second figure -10%.

Similar to the brightness gradients but the following saturation gradients show a change of the YUV color 169.9310, -15.2490, 37.7715 by changing the saturation by 10% instead.

■ 169.9310,
-15.2490, 37.7715

■ 169.9310,
-15.2490, 37.7715

■ 255.0000, 0.0000,
0.0000

■ 143.4470,
-14.5174, 36.4420

■ 220.9300,
-13.7695, 29.8794

■ 117.5500,
-14.0751, 34.5977

■ 240.4440,
-10.0789, 12.7656

■ 91.8810, -12.7593,
32.5534

■ 254.3160, -2.6208,
0.5999

■ 67.9840, -12.3171,
30.7090

■ 45.0160, -10.8539,
28.0500

■ 22.3040, -10.9959,
26.9204

■ 8.4860, -3.6906,

17.1138

■ 0.0000, 0.0000,
0.0000

■ 169.9310,
-15.2490, 37.7715

■ 169.9310,
-15.2490, 37.7715

■ 157.5580,
-19.5021, 48.6226

■ 182.3040,
-10.9959, 26.9204

■ 145.0710,
-24.1920, 59.5737

■ 194.7910, -6.3060,
15.9693

■ 132.6980,
-28.4451, 70.4249

■ 207.1640, -2.0529,
5.1182

■ 120.3250,
-32.6982, 81.2760

■ 219.5370, 2.2003,
-5.7329

■ 107.9520,
-36.9513, 92.1271

■ 231.9100, 6.4534,
-16.5841

■ 95.4650, -41.6412,
103.0782

■ 242.4420, 6.1911,
-25.8206

■ 88.9280, -43.8415,
108.8111

Harmonies

Analogous

The Analogous color harmony consists of three colors that are next to each other on the color wheel.



171.2760, -5.0661, 38.3459



169.9310, -15.2490, 37.7715



168.1440, -21.7630, 27.0607

Triad

The Triadic color harmony groups three colors that are evenly spaced from another and form a triangle on the color wheel.



169.9310, -15.2490, 37.7715



159.9500, -4.4123, -31.5281



167.5630, 22.8934, -16.2798

Complementary

The Complementary color scheme is a pair of colors which are on the opposite of each other on the color wheel.



169.9310, -15.2490, 37.7715



182.0690, 15.2490, -37.7715

Split Complementary

Split-complementary colors differ from the complementary color scheme. The scheme consists of three colors, the original color and two neighbors of the complement color.



161.8760, 24.7111, -39.3563



169.9310, -15.2490, 37.7715



156.9940, 8.8770, -47.3527

Square

The Square scheme is like the rectangle color scheme, but the four colors are evenly spaced on the color wheel.



169.9310, -15.2490, 37.7715



163.3950, -15.9707, -10.8704



157.4200, 19.5129, -52.1113



170.7080, 16.4130, 9.0261

Rectangle

The Rectangle color scheme consists of four colors that form a rectangle on the color wheel.



169.9310, -15.2490, 37.7715



166.5510, -22.4566, 16.1798



157.4200, 19.5129, -52.1113



165.5620, 24.3729, -24.1719

Sweetspot

The Sweet Spot groups the original color and five complimentary colors.



169.9310, -15.2490, 37.7715



240.4100, -5.1321, 12.7954



167.8520, 14.8630, 39.5948



118.5450, -3.2267, 8.2920



0.0000, 0.0000, 0.0000



128.0000, 0.0000, 0.0000

Same Dimension

The Same Dimension uses a secret algorithm to generate beautiful new colors.



169.9310, -15.2490, 37.7715



192.9070, -22.1392, 54.4556



191.6500, -25.9564, 18.7240



101.0500, -2.4896, 5.2182



71.6740, -35.3353, 87.1089



18.1400, -8.9430, 21.8022

Inverse Universe

The Inverse Universe completely reimagines the original color for something new.



182.0690, 15.2490, -37.7715



210.0930, 22.1392, -54.4556



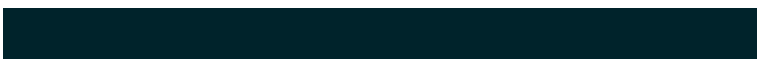
160.3500, 25.9565, -18.7239



102.5370, 2.2003, -5.7329



99.3260, 35.3353, -87.1089



25.4470, 8.6536, -22.3170

Previews

White Background



This preview shows how the YUV color 169.9310, -15.2490, 37.7715 looks on a white background.

Color Contrast Check

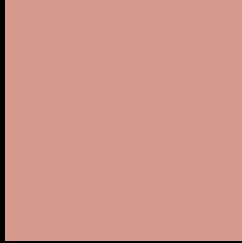
Large Text (above 18pt) WCAG AA × Fail

Any Text WCAG AA × Fail

Large Text (above 18pt) WCAG AAA × Fail

Any Text WCAG AAA × Fail

Black Background



This preview shows how the YUV color 169.9310, -15.2490, 37.7715 looks on a black background.

Color Contrast Check

Large Text (above 18pt) WCAG AA ✓ Pass

Any Text WCAG AA ✓ Pass

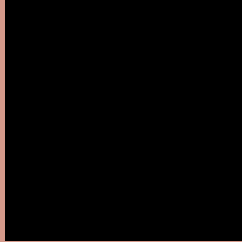
Large Text (above 18pt) WCAG AAA ✓ Pass

Any Text WCAG AAA ✓ Pass

If you want to check with other color combinations, try the [Color Contrast Checker](#).

YUV 169.9310, -15.2490, 37.7715

Background



This preview shows how black text looks on a background with the YUV color 169.9310, -15.2490, 37.7715.



This preview shows how white text looks on a background with the YUV color 169.9310, -15.2490,

Color Blindness Simulation

Color vision deficiency is a very complex topic, and I could not describe the different causes any better than Wikipedia does, so if you want to learn more, you should check out their [article about color blindness](#).

Dichromacy



Original Color

169.9310, -15.2490, 37.7715

Protanopia

167.8840, -10.7888, 7.1177

Deuteranopia

169.1310, -15.3476, 22.6871



Tritanopia

171.3900, -4.6293, 38.2460

Trichromacy



Original Color

169.9310, -15.2490, 37.7715

Protanomaly

168.4940, -12.5685, 17.9838

Deuteranomaly

169.4630, -15.5113, 28.5349

Tritanomaly

170.7660, -8.2656, 37.9162

Monochromacy



Original Color

169.9310, -15.2490, 37.7715

Achromatopsia

170.0000, 0.0000, 0.0000

Achromatomaly

170.0080, -5.4269, 14.0250

CSS Examples

Text

The CSS property to change the color of the text to YUV 169.9310, -15.2490, 37.7715 is called "color". The color property can be set on classes, ids or directly on the HTML element.

This example shows how text in the color `rgb(213, 154, 139)` looks like.

```
.text, #text, p{  
    color:rgb(213, 154, 139)  
}
```

If you want to add a text shadow in that color use the text-shadow property, you can generate a text shadow directly with our [CSS Text Shadow Generator](#).

Here you see how black text with a 4 pixel rgb(213, 154, 139) colored shadow looks like.

```
.shadow{ text-shadow: 4px 4px 2px rgb(213, 154, 139) }
```

Border

The CSS property to change the border of an element to YUV 169.9310, -15.2490, 37.7715 is called "border".

The border property can be set on classes, ids or directly on the HTML element.

This example shows the color as border, it can be applied via the CSS property "border" or "border-color".

```
.border, #border, table{ border:4px solid rgb(213, 154, 139) }
```


If only the border color should be changed use the property `border-color`.

```
.border{ border-color:rgb(213, 154, 139) }
```

If you want to add a box shadow in that color use:

Here you see how a box with a 4 pixel `rgb(213, 154, 139)` colored shadow looks like.

```
.boxshadow{ -moz-box-shadow:4px 4px 4px 4px rgb(213, 154, 139); -webkit-box-shadow:4px 4px 4px 4px rgb(213, 154, 139); box-shadow:4px 4px 4px 4px rgb(213, 154, 139) }
```

Background

The CSS property to change the background color of an element to YUV 169.9310, -15.2490, 37.7715 is called "background". The background property can be set on classes, ids or directly on the HTML element.

```
.background, #background, body{  
background: rgb(213, 154, 139) }
```

If only the background color should be changed can be used:

```
.background{ background-color: rgb(213,  
154, 139) }
```

This example shows the color as background, it is applied via the CSS property "background".

To optimize and compress your CSS code, you can use our [online CSS compressor and optimizer](#) based on csstidy. If you want to create a linear or radial gradient as background or border, check our [CSS Gradient Generator](#).

Hey! You found this booklet interesting? Support Converting Colors with the new Membership Option!

The pro membership hides all ads, plus gives you double the colors in the color bucket, and more awesome pro features!

[Learn more, Memberships starting at \\$2.50/m!](#)

**Follow me
on Twitter!**

@ConvertingColor