

Converting Colors

YUV(170.0420, -6.9227,
27.1502)

Have a look what the booklet for
YUV(170.0420, -6.9227, 27.1502)
contains.

YUV(170.0420, -6.9227, 27.1502)	3
<i>Conversions</i>	4
<i>Details</i>	6
<i>Harmonies</i>	12
<i>Previews</i>	24
<i>Color Blindness Simulation</i>	28
<i>CSS Examples</i>	31

Color

**YUV(170.0420, -6.9227,
27.1502)**

Conversions

Conversions Part 1

Format	Color
Hex	C99D9C
RGB	201, 157, 156
RGB Percent	79%, 62%, 61%
CMY	0.2118, 0.3843, 0.3882
CMYK	0.00, 0.22, 0.22, 0.21
HSL	1°, 29%, 70%
HSV	1°, 22%, 79%
XYZ	42.1451, 38.9317, 36.7458
YIQ	170.0420, 26.5450, 9.0170

Conversions

Conversions Part 2

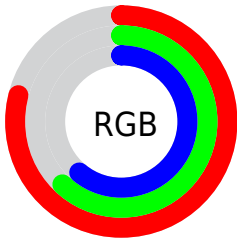
Format	Color
R_{YB}	201, 157, 156
Decimal	13213084
CIE _{Lab}	68.70, 16.18, 6.79
CIE _{LCh}	69, 17.550, 22.771
Yxy	38.9317, 0.3577, 0.3304
Android (android.graphics.Color)	4291403164 (0xFFC99D9C)
YUV	170.0420, -6.9227, 27.1502
Hunter-Lab	62.3953, 11.3766, 8.7597

Details

The YUV color **170.0420, -6.9227, 27.1502** is a light color, and the websafe version is hex **CC9999**. A complement of this color would be **186.9580, 6.9227, -27.1502**, and the grayscale version is **170.0000, 0.0000, 0.0000**.

A 20% lighter version of the original color is **224.6290, -7.2121, 26.6354**, and **117.8460, -6.3331, 24.6911** is the 20% darker color. If you saturate the color by 10%, you get **156.0220, -9.8708, 39.4457**, and if you desaturate by 10%, it is **184.0620, -3.9746, 14.8546**.

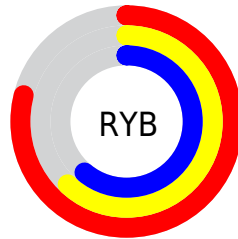
Distribution



Red (79%)

Green (62%)

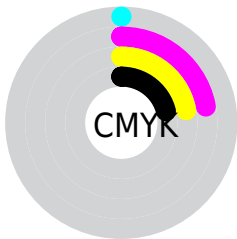
Blue (61%)



Red (79%)

Yellow (62%)

Blue (61%)

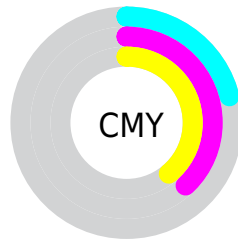


Cyan (0%)

Magenta (22%)

Yellow (22%)

Black (21%)



Cyan (21%)


Magenta (38%)


Yellow (39%)

Brightness & Saturation Gradients

These gradients show how the YUV color 170.0420, -6.9227, 27.1502 changes by changing the brightness by 10 percent. The first figure shows a shift by +10% for each color and the second figure -10%.

Similar to the brightness gradients but the following saturation gradients show a change of the YUV color 170.0420, -6.9227, 27.1502 by changing the saturation by 10% instead.

 170.0420, -6.9227,
27.1502


 170.0420, -6.9227,
27.1502


255.0000, 0.0000,
0.0000


 143.4440, -6.6279,
25.9206


 224.6290, -7.2121,
26.6354


 117.8460, -6.3331,
24.6911

 244.3710, -2.6479,
9.3216

 92.6610, -5.7489,
23.9763

 68.7640, -5.3067,
22.1320

 46.1660, -5.0118,
20.9024

 24.2690, -4.5696,
19.0581

 6.8770, -3.3904,

14.1399

■ 0.0000, 0.0000,
0.0000

■ 170.0420, -6.9227,
27.1502

■ 170.0420, -6.9227,
27.1502

■ 156.0220, -9.8708,
39.4457

■ 184.0620, -3.9746,
14.8546

■ 142.5890,
-13.1084, 51.2264

■ 197.4950, -0.7370,
3.0739

■ 128.5690,
-16.0565, 63.5220

■ 211.5150, 2.2111,
-9.2217

■ 114.5490,
-19.0047, 75.8175

■ 225.5350, 5.1592,
-21.5172

■ 101.1160,
-22.2422, 87.5983

■ 238.8540, 7.9600,
-33.1980

■ 86.9820, -25.6271,
99.9938

■ 72.9620, -28.5753,
112.2893

■ 62.4470, -30.7864,
121.5110

Harmonies

Analogous

The Analogous color harmony consists of three colors that are next to each other on the color wheel.



170.6700, 0.6557, 23.0914



170.0420, -6.9227, 27.1502



168.8260, -12.7322, 23.8316

Triad

The Triadic color harmony groups three colors that are evenly spaced from another and form a triangle on the color wheel.



170.0420, -6.9227, 27.1502



163.5610, -7.6716, -12.7700



165.8310, 16.3523, -18.2688

Complementary

The Complementary color scheme is a pair of colors which are on the opposite of each other on the color wheel.



170.0420, -6.9227, 27.1502



186.9580, 6.9227, -27.1502

Split Complementary

Split-complementary colors differ from the complementary color scheme. The scheme consists of three colors, the original color and two neighbors of the complement color.



162.5970, 14.4957, -29.4646



170.0420, -6.9227, 27.1502



162.2480, 0.3707, -25.6505

Square

The Square scheme is like the rectangle color scheme, but the four colors are evenly spaced on the color wheel.



170.0420, -6.9227, 27.1502



165.4550, -13.5353, 1.3550



161.6800, 8.5388, -32.1684



168.9470, 13.8301, -2.5845

Rectangle

The Rectangle color scheme consists of four colors that form a rectangle on the color wheel.



170.0420, -6.9227, 27.1502



167.9240, -14.7525, 18.4837



161.6800, 8.5388, -32.1684



164.9830, 15.7844, -22.7871

Sweetspot

The Sweet Spot groups the original color and five complimentary colors.



170.0420, -6.9227, 27.1502



242.9690, -2.9427, 10.5512



174.4710, 12.5858, 23.2659



120.8760, -1.9109, 6.2477



0.0000, 0.0000, 0.0000



128.0000, 0.0000, 0.0000

Same Dimension

The Same Dimension uses a secret algorithm to generate beautiful new colors.



170.0420, -6.9227, 27.1502



207.8050, -10.7499, 41.3900



182.9560, -13.2893, 15.8246



92.6910, -1.3267, 5.5330



51.0850, -25.1849, 98.1495



11.3510, -5.5960, 21.6172

Inverse Universe

The Inverse Universe completely reimagines the original color for something new.



186.9580, 6.9227, -27.1502



233.1950, 10.7499, -41.3900



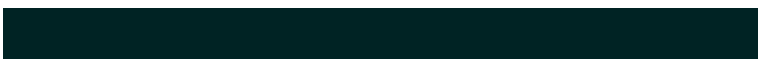
174.0440, 13.2893, -15.8246



96.3090, 1.3267, -5.5330



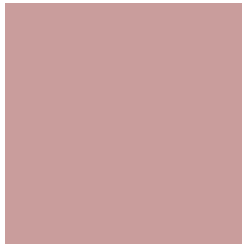
112.5020, 24.8955, -98.6643



24.6490, 5.5960, -21.6172

Previews

White Background



This preview shows how the YUV color 170.0420, -6.9227, 27.1502 looks on a white background.

Color Contrast Check

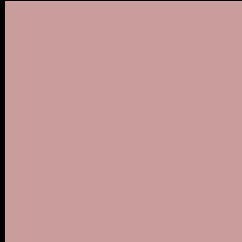
Large Text (above 18pt) WCAG AA × Fail

Any Text WCAG AA × Fail

Large Text (above 18pt) WCAG AAA × Fail

Any Text WCAG AAA × Fail

Black Background



This preview shows how the YUV color 170.0420, -6.9227, 27.1502 looks on a black background.

Color Contrast Check

Large Text (above 18pt) WCAG AA ✓ Pass

Any Text WCAG AA ✓ Pass

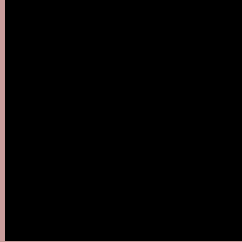
Large Text (above 18pt) WCAG AAA ✓ Pass

Any Text WCAG AAA ✓ Pass

If you want to check with other color combinations, try the [Color Contrast Checker](#).

YUV 170.0420, -6.9227, 27.1502

Background



This preview shows how black text looks on a background with the YUV color 170.0420, -6.9227, 27.1502.



This preview shows how white text looks on a background with the YUV color 170.0420, -6.9227,

Color Blindness Simulation

Color vision deficiency is a very complex topic, and I could not describe the different causes any better than Wikipedia does, so if you want to learn more, you should check out their [article about color blindness](#).

Dichromacy



Original Color

170.0420, -6.9227, 27.1502

Protanopia

167.9250, -2.9210, 3.5738

Deuteranopia

169.2750, -7.0376, 17.2988



Tritanopia

170.4210, -1.6866, 27.6948

Trichromacy



Original Color

170.0420, -6.9227, 27.1502

Protanomaly

168.6380, -4.2585, 12.5955

Deuteranomaly

169.2970, -7.0484, 20.7875

Tritanomaly

170.5520, -3.7231, 27.5799

Monochromacy



Original Color

170.0420, -6.9227, 27.1502

Achromatopsia

170.0000, 0.0000, 0.0000

Achromatomaly

169.7840, -2.3585, 9.8364

CSS Examples

Text

The CSS property to change the color of the text to YUV 170.0420, -6.9227, 27.1502 is called "color". The color property can be set on classes, ids or directly on the HTML element.

This example shows how text in the color `rgb(201, 157, 156)` looks like.

```
.text, #text, p{  
    color:rgb(201, 157, 156)  
}
```

If you want to add a text shadow in that color use the text-shadow property, you can generate a text shadow directly with our [CSS Text Shadow Generator](#).

Here you see how black text with a 4 pixel rgb(201, 157, 156) colored shadow looks like.

```
.shadow{ text-shadow: 4px 4px 2px rgb(201, 157, 156) }
```

Border

The CSS property to change the border of an element to YUV 170.0420, -6.9227, 27.1502 is called "border". The border property can be set on classes, ids or directly on the HTML element.

This example shows the color as border, it can be applied via the CSS property "border" or "border-color".

```
.border, #border, table{ border:4px solid rgb(201, 157, 156) }
```


If only the border color should be changed use the property `border-color`.

```
.border{ border-color:rgb(201, 157, 156) }
```

If you want to add a box shadow in that color use:

Here you see how a box with a 4 pixel `rgb(201, 157, 156)` colored shadow looks like.

```
.boxshadow{ -moz-box-shadow:4px 4px 4px  
4px rgb(201, 157, 156); -webkit-box-  
shadow:4px 4px 4px 4px rgb(201, 157, 156);  
box-shadow:4px 4px 4px 4px rgb(201, 157,  
156) }
```

Background

The CSS property to change the background color of an element to YUV 170.0420, -6.9227, 27.1502 is called "background". The background property can be set on classes, ids or directly on the HTML element.

```
.background, #background, body{  
background: rgb(201, 157, 156) }
```

If only the background color should be changed can be used:

```
.background{ background-color: rgb(201,  
157, 156) }
```

This example shows the color as background, it is applied via the CSS property "background".

To optimize and compress your CSS code, you can use our [online CSS compressor and optimizer](#) based on csstidy. If you want to create a linear or radial gradient as background or border, check our [CSS Gradient Generator](#).

Hey! You found this booklet interesting? Support Converting Colors with the new Membership Option!

The pro membership hides all ads, plus gives you double the colors in the color bucket, and more awesome pro features!

[Learn more, Memberships starting at \\$2.50/m!](#)

**Follow me
on Twitter!**

@ConvertingColor