

Converting Colors

YUV(170.0480, -9.3907,
25.3909)

Have a look what the booklet for
YUV(170.0480, -9.3907, 25.3909)
contains.

YUV(170.0480, -9.3907, 25.3909)	3
<i>Conversions</i>	4
<i>Details</i>	6
<i>Harmonies</i>	12
<i>Previews</i>	24
<i>Color Blindness Simulation</i>	28
<i>CSS Examples</i>	31

Color

**YUV(170.0480, -9.3907,
25.3909)**

Conversions

Conversions Part 1

Format	Color
Hex	C79F97
RGB	199, 159, 151
RGB Percent	78%, 62%, 59%
CMY	0.2196, 0.3765, 0.4078
CMYK	0.00, 0.20, 0.24, 0.22
HSL	10°, 30%, 69%
HSV	10°, 24%, 78%
XYZ	41.5372, 39.1728, 34.6500
YIQ	170.0480, 26.4080, 5.9920

Conversions

Conversions Part 2

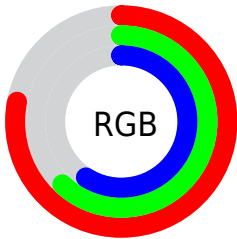
Format	Color
R_YB	199, 161, 151
Decimal	13082519
CIE _{Lab}	68.88, 13.59, 9.79
CIE _{LCh}	69, 16.749, 35.779
Yxy	39.1728, 0.3601, 0.3396
Android (android.graphics.Color)	4291272599 (0xFFC79F97)
YUV	170.0480, -9.3907, 25.3909
Hunter-Lab	62.5881, 8.9340, 10.9876

Details

The YUV color $170.0480, -9.3907, 25.3909$ is a light color, and the websafe version is hex $CC9999$. A complement of this color would be $179.9520, 9.3907, -25.3909$, and the grayscale version is $170.0000, 0.0000, 0.0000$.

A 20% lighter version of the original color is $225.2330, -9.9749, 26.1057$, and $117.2650, -8.5116, 23.4466$ is the 20% darker color. If you saturate the color by 10%, you get $157.7890, -13.2070, 36.1420$, and if you desaturate by 10%, it is $182.3070, -5.5744, 14.6398$.

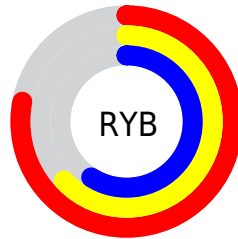
Distribution



Red (78%)

Green (62%)

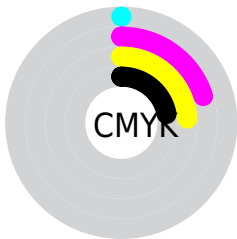
Blue (59%)



Red (78%)

Yellow (63%)

Blue (59%)

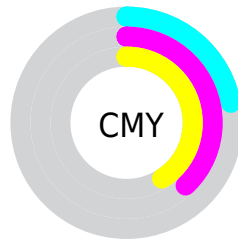


Cyan (0%)

Magenta (20%)

Yellow (24%)

Black (22%)



Cyan (22%)


Magenta (38%)

Yellow (41%)

Brightness & Saturation Gradients

These gradients show how the YUV color 170.0480, -9.3907, 25.3909 changes by changing the brightness by 10 percent. The first figure shows a shift by +10% for each color and the second figure -10%.


Similar to the brightness gradients but the following saturation gradients show a change of the YUV color 170.0480, -9.3907, 25.3909 by changing the saturation by 10% instead.

 170.0480, -9.3907,
25.3909

 170.0480, -9.3907,
25.3909


255.0000, 0.0000,
0.0000


 143.4500, -9.0958,
24.1614


 225.2330, -9.9749,
26.1057

 117.2650, -8.5116,
23.4466

 244.8610, -5.8475,
8.8919

 92.6670, -8.2168,
22.2170

 69.1830, -7.4852,
20.8875

 46.2860, -7.0430,
19.0432

 24.4600, -7.6218,
18.0136

 5.9800, -2.9481,

12.2955

■ 0.0000, 0.0000,
0.0000

■ 170.0480, -9.3907,
25.3909

■ 170.0480, -9.3907,
25.3909

■ 157.7890,
-13.2070, 36.1420

■ 182.3070, -5.5744,
14.6398

■ 146.1170,
-17.3127, 46.3784

■ 193.9790, -1.4686,
4.4034

■ 133.8580,
-21.1290, 57.1295

■ 206.2380, 2.3477,
-6.3477

■ 122.1860,
-25.2347, 67.3659

■ 217.9100, 6.4534,
-16.5841

■ 110.0410,
-28.6142, 78.0170

■ 230.1690, 10.2697,
-27.3352

■ 97.7820, -32.4305,
88.7682

■ 238.2560, 8.2548,
-34.4275

■ 86.1100, -36.5362,
99.0045

■ 78.8720, -38.8839,
105.3523

Harmonies

Analogous

The Analogous color harmony consists of three colors that are next to each other on the color wheel.



171.1710, -2.5493, 24.4060



170.0480, -9.3907, 25.3909



168.8640, -13.7370, 19.4133

Triad

The Triadic color harmony groups three colors that are evenly spaced from another and form a triangle on the color wheel.



170.0480, -9.3907, 25.3909



163.7390, -4.3083, -18.1881



167.5330, 15.0202, -10.9914

Complementary

The Complementary color scheme is a pair of colors which are on the opposite of each other on the color wheel.



170.0480, -9.3907, 25.3909



179.9520, 9.3907, -25.3909

Split Complementary

Split-complementary colors differ from the complementary color scheme. The scheme consists of three colors, the original color and two neighbors of the complement color.



164.7440, 14.9162, -24.3315



170.0480, -9.3907, 25.3909



162.5620, 4.1599, -27.6799

Square

The Square scheme is like the rectangle color scheme, but the four colors are evenly spaced on the color wheel.



170.0480, -9.3907, 25.3909



165.6930, -11.1876, -4.9928



162.6740, 11.0067, -30.4091



170.0080, 11.3351, 4.3780

Rectangle

The Rectangle color scheme consists of four colors that form a rectangle on the color wheel.



170.0480, -9.3907, 25.3909



167.5920, -14.5889, 12.6358



162.6740, 11.0067, -30.4091



166.6140, 15.4733, -16.3245

Sweetspot

The Sweet Spot groups the original color and five complimentary colors.



170.0480, -9.3907, 25.3909



244.1430, -3.5215, 9.5216



169.9120, 10.3964, 25.5102



121.4630, -2.2003, 5.7329



0.0000, 0.0000, 0.0000



128.0000, 0.0000, 0.0000

Same Dimension

The Same Dimension uses a secret algorithm to generate beautiful new colors.



170.0480, -9.3907, 25.3909



210.1700, -14.3808, 39.3159



184.1360, -16.3360, 13.0357



93.2780, -1.6161, 5.0182



64.5860, -31.8409, 86.3091



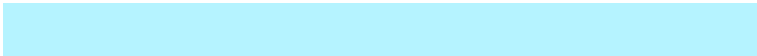
14.2860, -7.0430, 19.0432

Inverse Universe

The Inverse Universe completely reimagines the original color for something new.



179.9520, 9.3907, -25.3909



225.8300, 14.3808, -39.3159



165.8640, 16.3360, -13.0357



95.7220, 1.6161, -5.0182



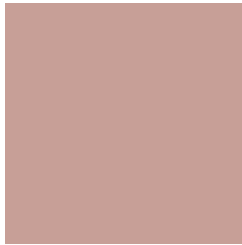
98.4140, 31.8409, -86.3091



21.7140, 7.0430, -19.0432

Previews

White Background



This preview shows how the YUV color 170.0480, -9.3907, 25.3909 looks on a white background.

Color Contrast Check

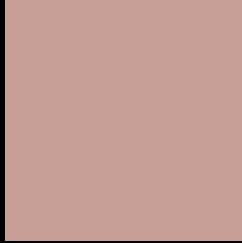
Large Text (above 18pt) WCAG AA × Fail

Any Text WCAG AA × Fail

Large Text (above 18pt) WCAG AAA × Fail

Any Text WCAG AAA × Fail

Black Background



This preview shows how the YUV color 170.0480, -9.3907, 25.3909 looks on a black background.

Color Contrast Check

Large Text (above 18pt) WCAG AA ✓ Pass

Any Text WCAG AA ✓ Pass

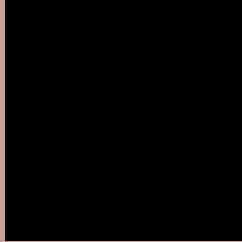
Large Text (above 18pt) WCAG AAA ✓ Pass

Any Text WCAG AAA ✓ Pass

If you want to check with other color combinations, try the [Color Contrast Checker](#).

YUV 170.0480, -9.3907, 25.3909

Background



This preview shows how black text looks on a background with the YUV color 170.0480, -9.3907, 25.3909.



This preview shows how white text looks on a background with the YUV color 170.0480, -9.3907,

Color Blindness Simulation

Color vision deficiency is a very complex topic, and I could not describe the different causes any better than Wikipedia does, so if you want to learn more, you should check out their [article about color blindness](#).

Dichromacy



Original Color

170.0480, -9.3907, 25.3909

Protanopia

168.4260, -6.1260, 4.8884

Deuteranopia

169.3030, -9.5164, 19.0283



Tritanopia

170.8230, -1.3917, 26.4652

Trichromacy



Original Color

170.0480, -9.3907, 25.3909

Protanomaly

169.1280, -7.4581, 12.1657

Deuteranomaly

169.6130, -9.6692, 21.3874

Tritanomaly

170.4270, -4.1545, 25.9355

Monochromacy



Original Color

170.0480, -9.3907, 25.3909

Achromatopsia

170.0000, 0.0000, 0.0000

Achromatomaly

170.1430, -3.5215, 9.5216

CSS Examples

Text

The CSS property to change the color of the text to YUV 170.0480, -9.3907, 25.3909 is called "color". The color property can be set on classes, ids or directly on the HTML element.

This example shows how text in the color `rgb(199, 159, 151)` looks like.

```
.text, #text, p{  
    color:rgb(199, 159, 151)  
}
```

If you want to add a text shadow in that color use the text-shadow property, you can generate a text shadow directly with our [CSS Text Shadow Generator](#).

Here you see how black text with a 4 pixel rgb(199, 159, 151) colored shadow looks like.

```
.shadow{ text-shadow: 4px 4px 2px rgb(199, 159, 151) }
```

Border

The CSS property to change the border of an element to YUV 170.0480, -9.3907, 25.3909 is called "border". The border property can be set on classes, ids or directly on the HTML element.

This example shows the color as border, it can be applied via the CSS property "border" or "border-color".

```
.border, #border, table{ border:4px solid rgb(199, 159, 151) }
```


If only the border color should be changed use the property `border-color`.

```
.border{ border-color:rgb(199, 159, 151) }
```

If you want to add a box shadow in that color use:

Here you see how a box with a 4 pixel `rgb(199, 159, 151)` colored shadow looks like.

```
.boxshadow{ -moz-box-shadow:4px 4px 4px  
4px rgb(199, 159, 151); -webkit-box-  
shadow:4px 4px 4px 4px rgb(199, 159, 151);  
box-shadow:4px 4px 4px 4px rgb(199, 159,  
151) }
```

Background

The CSS property to change the background color of an element to YUV 170.0480, -9.3907, 25.3909 is called "background". The background property can be set on classes, ids or directly on the HTML element.

```
.background, #background, body{  
background: rgb(199, 159, 151) }
```

If only the background color should be changed can be used:

```
.background{ background-color: rgb(199,  
159, 151) }
```

This example shows the color as background, it is applied via the CSS property "background".

To optimize and compress your CSS code, you can use our [online CSS compressor and optimizer](#) based on csstidy. If you want to create a linear or radial gradient as background or border, check our [CSS Gradient Generator](#).

Hey! You found this booklet interesting? Support Converting Colors with the new Membership Option!

The pro membership hides all ads, plus gives you double the colors in the color bucket, and more awesome pro features!

[Learn more, Memberships starting at \\$2.50/m!](#)

**Follow me
on Twitter!**

@ConvertingColor