

Converting Colors

YUV(170.2460, -16.3903,
30.4793)

Have a look what the booklet for
YUV(170.2460, -16.3903, 30.4793)
contains.

YUV(170.2460, -16.3903, 30.4793)	3
<i>Conversions</i>	4
<i>Details</i>	6
<i>Harmonies</i>	12
<i>Previews</i>	24
<i>Color Blindness Simulation</i>	28
<i>CSS Examples</i>	31

Color

**YUV(170.2460, -16.3903,
30.4793)**

Conversions

Conversions Part 1

Format	Color
Hex	CD9F89
RGB	205, 159, 137
RGB Percent	80%, 62%, 54%
CMY	0.1961, 0.3765, 0.4627
CMYK	0.00, 0.22, 0.33, 0.20
HSL	19°, 40%, 67%
HSV	19°, 33%, 80%
XYZ	42.0903, 39.5816, 29.0885
YIQ	170.2460, 34.4780, 2.9100

Conversions

Conversions Part 2

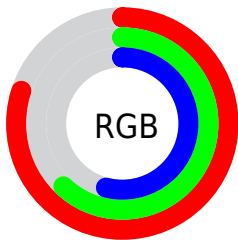
Format	Color
R _Y B	205, 170, 137
Decimal	13475721
CIE Lab	69.17, 14.00, 18.04
CIE LCh	69, 22.829, 52.186
Yxy	39.5816, 0.3800, 0.3574
Android (android.graphics.Color)	4291665801 (0xFFCD9F89)
YUV	170.2460, -16.3903, 30.4793
Hunter-Lab	62.9139, 9.3199, 16.6267

Details

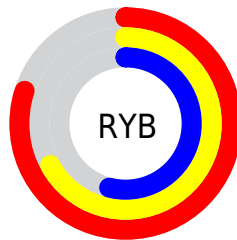
The YUV color $170.2460, -16.3903, 30.4793$ is a light color, and the websafe version is hex $CC9999$. A complement of this color would be $171.7540, 16.3903, -30.4793$, and the grayscale version is $170.0000, 0.0000, 0.0000$.

A 20% lighter version of the original color is $223.5230, -16.5268, 27.6053$, and $117.2780, -14.9271, 27.8202$ is the 20% darker color. If you saturate the color by 10%, you get $159.6340, -21.5116, 39.7860$, and if you desaturate by 10%, it is $180.7440, -11.7058, 21.2725$.

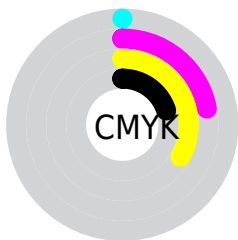
Distribution



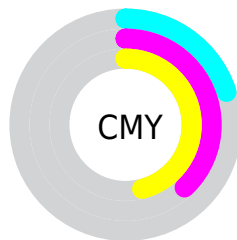
- Red (80%)
- Green (62%)
- Blue (54%)



- Red (80%)
- Yellow (67%)
- Blue (54%)



- Cyan (0%)
- Magenta (22%)
- Yellow (33%)
- Black (20%)



- Cyan (20%)
- Magenta (38%)
- Yellow (46%)

Brightness & Saturation Gradients

These gradients show how the YUV color 170.2460, -16.3903, 30.4793 changes by changing the brightness by 10 percent. The first figure shows a shift by +10% for each color and the second figure -10%.

Similar to the brightness gradients but the following saturation gradients show a change of the YUV color 170.2460, -16.3903, 30.4793 by changing the saturation by 10% instead.

■ 170.2460,
-16.3903, 30.4793

■ 170.2460,
-16.3903, 30.4793

255.0000, 0.0000,
0.0000

■ 143.7620,
-15.6587, 29.1497

■ 223.5230,
-16.5268, 27.6053

■ 117.2780,
-14.9271, 27.8202

■ 243.1510,
-12.3994, 10.3916

■ 92.7940, -14.1954,
26.4907

■ 254.0880, -3.4944,
0.7998

■ 68.8970, -13.7532,
24.6463

■ 45.9290, -12.2900,
21.9873

■ 24.3310, -11.9952,
20.7577

■ 6.5780, -3.2430,

13.5251

■ 0.0000, 0.0000,
0.0000

■ 170.2460,
-16.3903, 30.4793

■ 170.2460,
-16.3903, 30.4793

■ 159.6340,
-21.5116, 39.7860

■ 180.7440,
-11.7058, 21.2725

■ 149.1360,
-26.1960, 48.9927

■ 191.3560, -6.5845,
11.9658

■ 138.5240,
-31.3173, 58.2995

■ 201.9680, -1.4632,
2.6591

■ 128.6130,
-36.2912, 66.9914

■ 211.8790, 3.5107,
-6.0329

■ 118.0010,
-41.4125, 76.2981

■ 222.4910, 8.6319,
-15.3396

■ 107.5030,
-46.0970, 85.5049

■ 232.4190, 11.1324,
-24.0465

■ 100.0370,
-49.3182, 92.0526

■ 240.0500, 7.3704,
-30.7388

Harmonies

Analogous

The Analogous color harmony consists of three colors that are next to each other on the color wheel.



171.6300, -8.6916, 34.5275



170.2460, -16.3903, 30.4793



168.5450, -19.9887, 17.9390

Triad

The Triadic color harmony groups three colors that are evenly spaced from another and form a triangle on the color wheel.



170.2460, -16.3903, 30.4793



161.0190, 0.9766, -33.3427



169.7880, 18.3455, -4.1991

Complementary

The Complementary color scheme is a pair of colors which are on the opposite of each other on the color wheel.



170.2460, -16.3903, 30.4793



171.7540, 16.3903, -30.4793

Split Complementary

Split-complementary colors differ from the complementary color scheme. The scheme consists of three colors, the original color and two neighbors of the complement color.



165.7530, 21.3208, -25.2164



170.2460, -16.3903, 30.4793



159.5260, 12.0657, -43.4343

Square

The Square scheme is like the rectangle color scheme, but the four colors are evenly spaced on the color wheel.



170.2460, -16.3903, 30.4793



163.2570, -9.9867, -16.8884



161.7850, 19.3330, -41.0304



172.2590, 10.7183, 15.5589

Rectangle

The Rectangle color scheme consists of four colors that form a rectangle on the color wheel.



170.2460, -16.3903, 30.4793



167.0060, -19.2300, 7.8877



161.7850, 19.3330, -41.0304



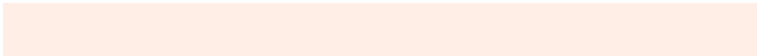
169.0860, 19.6776, -11.4764

Sweetspot

The Sweet Spot groups the original color and five complimentary colors.



170.2460, -16.3903, 30.4793



242.1710, -6.0003, 11.2510



162.5760, 10.0690, 37.2058



119.7190, -3.8055, 7.2624



0.0000, 0.0000, 0.0000



128.0000, 0.0000, 0.0000

Same Dimension

The Same Dimension uses a secret algorithm to generate beautiful new colors.



170.2460, -16.3903, 30.4793



202.8690, -24.5854, 45.7189



190.2040, -26.2296, 12.9761



96.7510, -2.3422, 4.6034



81.3320, -40.0967, 74.2538



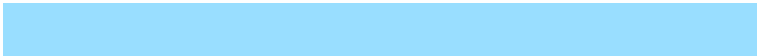
18.4060, -9.0742, 17.1839

Inverse Universe

The Inverse Universe completely reimagines the original color for something new.



171.7540, 16.3903, -30.4793



205.1310, 24.5854, -45.7189



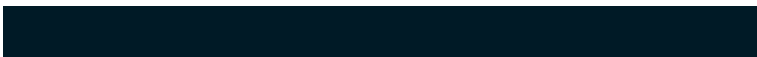
151.7960, 26.2296, -12.9761



97.2490, 2.3422, -4.6034



84.6680, 40.0967, -74.2538



19.5940, 9.0742, -17.1839

Previews

White Background



This preview shows how the YUV color 170.2460, -16.3903, 30.4793 looks on a white background.

Color Contrast Check

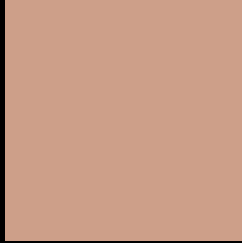
Large Text (above 18pt) WCAG AA × Fail

Any Text WCAG AA × Fail

Large Text (above 18pt) WCAG AAA × Fail

Any Text WCAG AAA × Fail

Black Background



This preview shows how the YUV color 170.2460, -16.3903, 30.4793 looks on a black background.

Color Contrast Check

Large Text (above 18pt) WCAG AA ✓ Pass

Any Text WCAG AA ✓ Pass

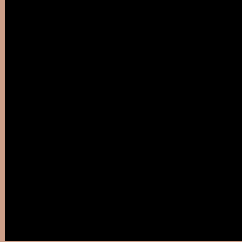
Large Text (above 18pt) WCAG AAA ✓ Pass

Any Text WCAG AAA ✓ Pass

If you want to check with other color combinations, try the [Color Contrast Checker](#).

YUV 170.2460, -16.3903, 30.4793

Background



This preview shows how black text looks on a background with the YUV color 170.2460, -16.3903, 30.4793.



This preview shows how white text looks on a background with the YUV color 170.2460, -16.3903, 30.4793.

Color Blindness Simulation

Color vision deficiency is a very complex topic, and I could not describe the different causes any better than Wikipedia does, so if you want to learn more, you should check out their [article about color blindness](#).

Dichromacy



Original Color

170.2460, -16.3903, 30.4793

Protanopia

168.6130, -13.1202, 8.2324

Deuteranopia

169.5010, -16.5160, 24.1166



Tritanopia

172.2150, -2.5710, 31.3834

Trichromacy



Original Color

170.2460, -16.3903, 30.4793

Protanomaly

169.0270, -14.3103, 16.6393

Deuteranomaly

169.8110, -16.6688, 26.4758

Tritanomaly

171.2490, -7.5178, 31.3536

Monochromacy



Original Color

170.2460, -16.3903, 30.4793

Achromatopsia

170.0000, 0.0000, 0.0000

Achromatomaly

170.1710, -6.0003, 11.2510

CSS Examples

Text

The CSS property to change the color of the text to YUV 170.2460, -16.3903, 30.4793 is called "color". The color property can be set on classes, ids or directly on the HTML element.

This example shows how text in the color `rgb(205, 159, 137)` looks like.

```
.text, #text, p{  
    color:rgb(205, 159, 137)  
}
```

If you want to add a text shadow in that color use the text-shadow property, you can generate a text shadow directly with our [CSS Text Shadow Generator](#).

Here you see how black text with a 4 pixel rgb(205, 159, 137) colored shadow looks like.

```
.shadow{ text-shadow: 4px 4px 2px rgb(205, 159, 137) }
```

Border

The CSS property to change the border of an element to YUV 170.2460, -16.3903, 30.4793 is called "border".

The border property can be set on classes, ids or directly on the HTML element.

This example shows the color as border, it can be applied via the CSS property "border" or "border-color".

```
.border, #border, table{ border:4px solid rgb(205, 159, 137) }
```


If only the border color should be changed use the property `border-color`.

```
.border{ border-color:rgb(205, 159, 137) }
```

If you want to add a box shadow in that color use:

Here you see how a box with a 4 pixel `rgb(205, 159, 137)` colored shadow looks like.

```
.boxshadow{ -moz-box-shadow:4px 4px 4px  
4px rgb(205, 159, 137); -webkit-box-  
shadow:4px 4px 4px 4px rgb(205, 159, 137);  
box-shadow:4px 4px 4px 4px rgb(205, 159,  
137) }
```

Background

The CSS property to change the background color of an element to YUV 170.2460, -16.3903, 30.4793 is called "background". The background property can be set on classes, ids or directly on the HTML element.

```
.background, #background, body{  
background: rgb(205, 159, 137) }
```

If only the background color should be changed can be used:

```
.background{ background-color: rgb(205,  
159, 137) }
```

This example shows the color as background, it is applied via the CSS property "background".

To optimize and compress your CSS code, you can use our [online CSS compressor and optimizer](#) based on csstidy. If you want to create a linear or radial gradient as background or border, check our [CSS Gradient Generator](#).

Hey! You found this booklet interesting? Support Converting Colors with the new Membership Option!

The pro membership hides all ads, plus gives you double the colors in the color bucket, and more awesome pro features!

[Learn more, Memberships starting at \\$2.50/m!](#)

**Follow me
on Twitter!**

@ConvertingColor