

Converting Colors

YUV(170.2910, -21.3425,
32.1938)

Have a look what the booklet for
YUV(170.2910, -21.3425, 32.1938)
contains.

YUV(170.2910, -21.3425, 32.1938)	3
<i>Conversions</i>	4
<i>Details</i>	6
<i>Harmonies</i>	12
<i>Previews</i>	24
<i>Color Blindness Simulation</i>	28
<i>CSS Examples</i>	31

Color

**YUV(170.2910, -21.3425,
32.1938)**

Conversions

Conversions Part 1

Format	Color
Hex	CFA07F
RGB	207, 160, 127
RGB Percent	81%, 63%, 50%
CMY	0.1882, 0.3725, 0.5020
CMYK	0.00, 0.23, 0.39, 0.19
HSL	25°, 45%, 65%
HSV	25°, 39%, 81%
XYZ	42.1337, 39.9393, 25.5670
YIQ	170.2910, 38.6050, -0.2990

Conversions

Conversions Part 2

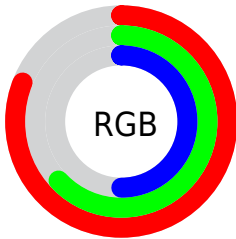
Format	Color
R_{YB}	207, 183, 127
Decimal	13607039
CIE Lab	69.43, 13.02, 23.90
CIE LCh	69, 27.218, 61.410
Yxy	39.9393, 0.3914, 0.3710
Android (android.graphics.Color)	4291797119 (0xFFCFA07F)
YUV	170.2910, -21.3425, 32.1938
Hunter-Lab	63.1976, 8.4099, 20.2521

Details

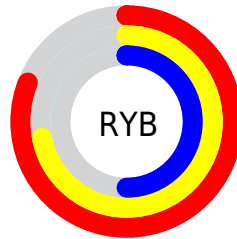
The YUV color $170.2910, -21.3425, 32.1938$ is a light color, and the websafe version is hex $CC9966$. A complement of this color would be $163.7090, 21.3425, -32.1938$, and the grayscale version is $170.0000, 0.0000, 0.0000$.

A 20% lighter version of the original color is $222.9700, -21.1842, 28.0903$, and $117.4370, -19.4424, 29.4348$ is the 20% darker color. If you saturate the color by 10%, you get $160.8530, -27.0425, 40.4709$, and if you desaturate by 10%, it is $179.7290, -15.6424, 23.9167$.

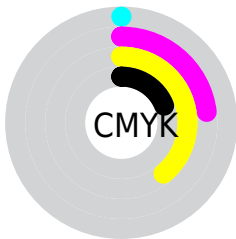
Distribution



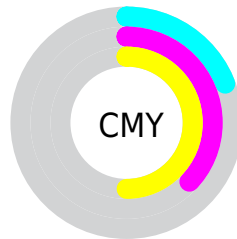
- Red (81%)
- Green (63%)
- Blue (50%)



- Red (81%)
- Yellow (72%)
- Blue (50%)



- Cyan (0%)
- Magenta (23%)
- Yellow (39%)
- Black (19%)



- Cyan (19%)
- Magenta (37%)
- Yellow (50%)

Brightness & Saturation Gradients

These gradients show how the YUV color 170.2910, -21.3425, 32.1938 changes by changing the brightness by 10 percent. The first figure shows a shift by +10% for each color and the second figure -10%.

Similar to the brightness gradients but the following saturation gradients show a change of the YUV color 170.2910, -21.3425, 32.1938 by changing the saturation by 10% instead.

■ 170.2910,
-21.3425, 32.1938

■ 170.2910,
-21.3425, 32.1938

255.0000, 0.0000,
0.0000

■ 143.8070,
-20.6109, 30.8643

■ 222.9700,
-21.1842, 28.0903

■ 117.4370,
-19.4424, 29.4348

■ 242.5980,
-17.0568, 10.8766

■ 92.5400, -19.0002,
27.5904

■ 252.8340, -8.2992,
1.8996

■ 68.7570, -18.1212,
25.6461

■ 45.6750, -17.0948,
23.0870

■ 24.9180, -12.2846,
20.2429

■ 6.8770, -3.3904,

14.1399

■ 0.0000, 0.0000,
0.0000

■ 170.2910,
-21.3425, 32.1938

■ 170.2910,
-21.3425, 32.1938

■ 160.8530,
-27.0425, 40.4709

■ 179.7290,
-15.6424, 23.9167

■ 151.5290,
-32.3058, 48.6481

■ 189.0530,
-10.3791, 15.7395

■ 142.0910,
-38.0059, 56.9252

■ 198.4910, -4.6791,
7.4624

■ 132.0660,
-43.4165, 65.7171

■ 208.5160, 0.7316,
-1.3295

■ 122.6280,
-49.1166, 73.9942

■ 217.9540, 6.4317,
-9.6067

■ 113.3040,
-54.3799, 82.1714

■ 227.2780, 11.6949,
-17.7838

■ 111.7880,
-55.1115, 83.5009

■ 234.7780, 9.9694,
-24.3613

■ 240.6480, 7.0755,
-29.5093

Harmonies

Analogous

The Analogous color harmony consists of three colors that are next to each other on the color wheel.



171.5230, -13.0758, 40.7603



170.2910, -21.3425, 32.1938



167.9100, -23.6196, 15.8649

Triad

The Triadic color harmony groups three colors that are evenly spaced from another and form a triangle on the color wheel.



170.2910, -21.3425, 32.1938



158.4950, 5.6720, -46.0381



172.1740, 19.6342, 2.4784

Complementary

The Complementary color scheme is a pair of colors which are on the opposite of each other on the color wheel.



170.2910, -21.3425, 32.1938



163.7090, 21.3425, -32.1938

Split Complementary

Split-complementary colors differ from the complementary color scheme. The scheme consists of three colors, the original color and two neighbors of the complement color.



167.0890, 25.0991, -23.7571



170.2910, -21.3425, 32.1938



157.0560, 18.2134, -55.3001

Square

The Square scheme is like the rectangle color scheme, but the four colors are evenly spaced on the color wheel.



170.2910, -21.3425, 32.1938



161.9460, -8.3544, -27.1396



160.9460, 25.1696, -46.4336



173.4990, 10.1070, 24.9954

Rectangle

The Rectangle color scheme consists of four colors that form a rectangle on the color wheel.



170.2910, -21.3425, 32.1938



166.6910, -21.5397, 2.0250



160.9460, 25.1696, -46.4336



170.9880, 21.6979, -6.1285

Sweetspot

The Sweet Spot groups the original color and five complimentary colors.



170.2910, -21.3425, 32.1938



240.9000, -8.3317, 12.3657



156.3920, 9.1737, 44.3832



119.4910, -4.6791, 7.4624



0.0000, 0.0000, 0.0000



128.0000, 0.0000, 0.0000

Same Dimension

The Same Dimension uses a secret algorithm to generate beautiful new colors.



170.2910, -21.3425, 32.1938



201.1590, -31.1374, 47.2186



193.1840, -32.6287, 12.1166



99.6370, -2.7790, 4.7034



90.7350, -44.7324, 67.7614



22.2380, -10.9633, 16.4543

Inverse Universe

The Inverse Universe completely reimagines the original color for something new.



163.7090, 21.3425, -32.1938



191.8410, 31.1374, -47.2186



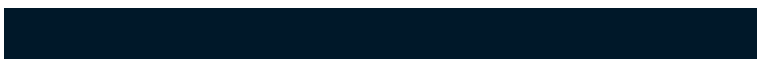
140.8160, 32.6287, -12.1166



98.7760, 3.0684, -4.1886



77.2650, 44.7324, -67.7614



18.7620, 10.9633, -16.4543

Previews

White Background



This preview shows how the YUV color 170.2910, -21.3425, 32.1938 looks on a white background.

Color Contrast Check

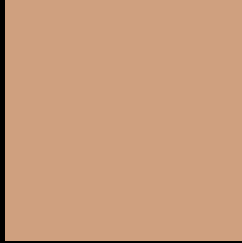
Large Text (above 18pt) WCAG AA × Fail

Any Text WCAG AA × Fail

Large Text (above 18pt) WCAG AAA × Fail

Any Text WCAG AAA × Fail

Black Background



This preview shows how the YUV color 170.2910, -21.3425, 32.1938 looks on a black background.

Color Contrast Check

Large Text (above 18pt) WCAG AA ✓ Pass

Any Text WCAG AA ✓ Pass

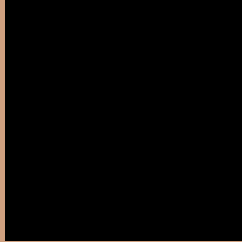
Large Text (above 18pt) WCAG AAA ✓ Pass

Any Text WCAG AAA ✓ Pass

If you want to check with other color combinations, try the [Color Contrast Checker](#).

YUV 170.2910, -21.3425, 32.1938

Background



This preview shows how black text looks on a background with the YUV color 170.2910, -21.3425, 32.1938.



This preview shows how white text looks on a background with the YUV color 170.2910, -21.3425, 32.1938.

Color Blindness Simulation

Color vision deficiency is a very complex topic, and I could not describe the different causes any better than Wikipedia does, so if you want to learn more, you should check out their [article about color blindness](#).

Dichromacy



Original Color

170.2910, -21.3425, 32.1938

Protanopia

168.8430, -18.6566, 10.6617

Deuteranopia

169.8450, -21.6156, 26.4459



Tritanopia

172.9980, -3.4500, 33.3278

Trichromacy



Original Color

170.2910, -21.3425, 32.1938

Protanomaly

169.0720, -19.2625, 18.3539

Deuteranomaly

170.1550, -21.7684, 28.8051

Tritanomaly

172.2770, -9.9966, 33.0831

Monochromacy



Original Color

170.2910, -21.3425, 32.1938

Achromatopsia

170.0000, 0.0000, 0.0000

Achromatomaly

169.7150, -7.7475, 11.6509

CSS Examples

Text

The CSS property to change the color of the text to YUV 170.2910, -21.3425, 32.1938 is called "color". The color property can be set on classes, ids or directly on the HTML element.

This example shows how text in the color `rgb(207, 160, 127)` looks like.

```
.text, #text, p{  
    color:rgb(207, 160, 127)  
}
```

If you want to add a text shadow in that color use the text-shadow property, you can generate a text shadow directly with our [CSS Text Shadow Generator](#).

Here you see how black text with a 4 pixel rgb(207, 160, 127) colored shadow looks like.

```
.shadow{ text-shadow: 4px 4px 2px rgb(207, 160, 127) }
```

Border

The CSS property to change the border of an element to YUV 170.2910, -21.3425, 32.1938 is called "border".

The border property can be set on classes, ids or directly on the HTML element.

This example shows the color as border, it can be applied via the CSS property "border" or "border-color".

```
.border, #border, table{ border:4px solid rgb(207, 160, 127) }
```


If only the border color should be changed use the property `border-color`.

```
.border{ border-color:rgb(207, 160, 127) }
```

If you want to add a box shadow in that color use:

Here you see how a box with a 4 pixel `rgb(207, 160, 127)` colored shadow looks like.

```
.boxshadow{ -moz-box-shadow:4px 4px 4px 4px rgb(207, 160, 127); -webkit-box-shadow:4px 4px 4px 4px rgb(207, 160, 127); box-shadow:4px 4px 4px 4px rgb(207, 160, 127) }
```

Background

The CSS property to change the background color of an element to YUV 170.2910, -21.3425, 32.1938 is called "background". The background property can be set on classes, ids or directly on the HTML element.

```
.background, #background, body{  
background: rgb(207, 160, 127) }
```

If only the background color should be changed can be used:

```
.background{ background-color: rgb(207,  
160, 127) }
```

This example shows the color as background, it is applied via the CSS property "background".

To optimize and compress your CSS code, you can use our [online CSS compressor and optimizer](#) based on csstidy. If you want to create a linear or radial gradient as background or border, check our [CSS Gradient Generator](#).

Hey! You found this booklet interesting? Support Converting Colors with the new Membership Option!

The pro membership hides all ads, plus gives you double the colors in the color bucket, and more awesome pro features!

[Learn more, Memberships starting at \\$2.50/m!](#)

**Follow me
on Twitter!**

@ConvertingColor