

Converting Colors

YUV(170.8050, -14.2009,
28.2350)

Have a look what the booklet for
YUV(170.8050, -14.2009, 28.2350)
contains.

YUV(170.8050, -14.2009, 28.2350)	3
<i>Conversions</i>	4
<i>Details</i>	6
<i>Harmonies</i>	12
<i>Previews</i>	24
<i>Color Blindness Simulation</i>	28
<i>CSS Examples</i>	31

Color

**YUV(170.8050, -14.2009,
28.2350)**

Conversions

Conversions Part 1

Format	Color
Hex	CBA08E
RGB	203, 160, 142
RGB Percent	80%, 63%, 56%
CMY	0.2039, 0.3725, 0.4431
CMYK	0.00, 0.21, 0.30, 0.20
HSL	18°, 37%, 68%
HSV	18°, 30%, 80%
XYZ	42.0819, 39.7911, 31.0537
YIQ	170.8050, 31.4060, 3.5180

Conversions

Conversions Part 2

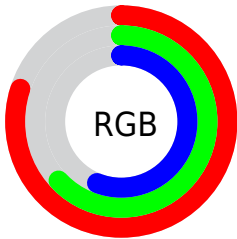
Format	Color
R _Y B	203, 168, 142
Decimal	13344910
CIE Lab	69.32, 13.32, 15.46
CIE LCh	69, 20.407, 49.236
Yxy	39.7911, 0.3726, 0.3524
Android (android.graphics.Color)	4291534990 (0xFFCBA08E)
YUV	170.8050, -14.2009, 28.2350
Hunter-Lab	63.0802, 8.6901, 14.9683

Details

The YUV color **170.8050, -14.2009, 28.2350** is a light color, and the websafe version is hex **CC9999**. A complement of this color would be **174.1950, 14.2009, -28.2350**, and the grayscale version is **171.0000, 0.0000, 0.0000**.

A 20% lighter version of the original color is **224.7940, -14.1954, 26.4907**, and **118.1360, -12.8850, 26.1907** is the 20% darker color. If you saturate the color by 10%, you get **160.3070, -18.8854, 37.4418**, and if you desaturate by 10%, it is **181.3030, -9.5164, 19.0283**.

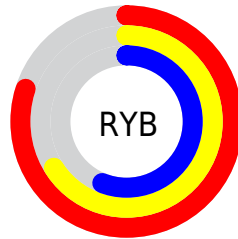
Distribution



Red (80%)

Green (63%)

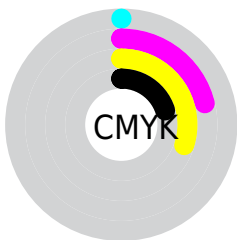
Blue (56%)



Red (80%)

Yellow (66%)

Blue (56%)

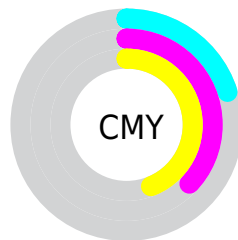


Cyan (0%)

Magenta (21%)

Yellow (30%)

Black (20%)



Cyan (20%)

Magenta (37%)

Yellow (44%)

Brightness & Saturation Gradients

These gradients show how the YUV color 170.8050, -14.2009, 28.2350 changes by changing the brightness by 10 percent. The first figure shows a shift by +10% for each color and the second figure -10%.

Similar to the brightness gradients but the following saturation gradients show a change of the YUV color 170.8050, -14.2009, 28.2350 by changing the saturation by 10% instead.

■ 170.8050,
-14.2009, 28.2350

■ 170.8050,
-14.2009, 28.2350

255.0000, 0.0000,
0.0000

■ 144.2070,
-13.9061, 27.0055

■ 224.7940,
-14.1954, 26.4907

■ 118.1360,
-12.8850, 26.1907

■ 244.4220,
-10.0680, 9.2769

■ 93.2390, -12.4428,
24.3464

■ 254.6580, -1.3104,
0.2999

■ 69.4560, -11.5638,
22.4021

■ 46.6730, -10.6848,
20.4578

■ 24.9180, -12.2846,
20.2429

■ 6.5780, -3.2430,

13.5251

■ 0.0000, 0.0000,
0.0000

■ 170.8050,
-14.2009, 28.2350

■ 170.8050,
-14.2009, 28.2350

■ 160.3070,
-18.8854, 37.4418

■ 181.3030, -9.5164,
19.0283

■ 149.1080,
-23.7172, 47.2633

■ 192.5020, -4.6845,
9.2067

■ 138.6100,
-28.4017, 56.4700

■ 203.0000, 0.0000,
0.0000

■ 128.1120,
-33.0862, 65.6768

■ 213.4980, 4.6845,
-9.2067

■ 117.0270,
-37.4813, 75.3983

■ 224.6970, 9.5164,
-19.0283

■ 106.4150,
-42.6026, 84.7050

■ 234.1690, 10.2697,
-27.3352

■ 95.9170, -47.2871,
93.9118

■ 239.4520, 7.6652,
-31.9684

Harmonies

Analogous

The Analogous color harmony consists of three colors that are next to each other on the color wheel.



172.3630, -7.0810, 31.2536



170.8050, -14.2009, 28.2350



169.4140, -17.9521, 18.0539

Triad

The Triadic color harmony groups three colors that are evenly spaced from another and form a triangle on the color wheel.



170.8050, -14.2009, 28.2350



162.4110, -0.2026, -28.4244



170.3210, 16.6037, -5.5435

Complementary

The Complementary color scheme is a pair of colors which are on the opposite of each other on the color wheel.



170.8050, -14.2009, 28.2350



174.1950, 14.2009, -28.2350

Split Complementary

Split-complementary colors differ from the complementary color scheme. The scheme consists of three colors, the original color and two neighbors of the complement color.



166.4820, 18.9894, -24.1017



170.8050, -14.2009, 28.2350



161.8750, 9.4286, -37.6014

Square

The Square scheme is like the rectangle color scheme, but the four colors are evenly spaced on the color wheel.



170.8050, -14.2009, 28.2350



165.2790, -9.9975, -13.3997



163.4220, 16.5540, -36.3271



172.5360, 10.5818, 12.6849

Rectangle

The Rectangle color scheme consists of four colors that form a rectangle on the color wheel.



170.8050, -14.2009, 28.2350



168.1740, -17.3408, 8.6174



163.4220, 16.5540, -36.3271



168.9180, 17.7884, -12.2061

Sweetspot

The Sweet Spot groups the original color and five complimentary colors.



170.8050, -14.2009, 28.2350



242.9860, -5.4161, 10.5363



165.2550, 10.2273, 33.1024



120.4200, -3.6581, 6.6477



0.0000, 0.0000, 0.0000



128.0000, 0.0000, 0.0000

Same Dimension

The Same Dimension uses a secret algorithm to generate beautiful new colors.



170.8050, -14.2009, 28.2350



206.3570, -21.3750, 42.6599



188.4150, -22.8826, 12.7910



96.7510, -2.3422, 4.6034



78.3970, -38.6497, 76.8278



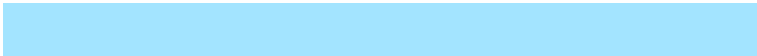
17.8190, -8.7848, 17.6987

Inverse Universe

The Inverse Universe completely reimagines the original color for something new.



174.1950, 14.2009, -28.2350



211.6430, 21.3750, -42.6599



156.5850, 22.8826, -12.7910



97.2490, 2.3422, -4.6034



87.6030, 38.6497, -76.8278



20.1810, 8.7848, -17.6987

Previews

White Background



This preview shows how the YUV color 170.8050, -14.2009, 28.2350 looks on a white background.

Color Contrast Check

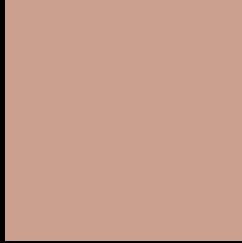
Large Text (above 18pt) WCAG AA × Fail

Any Text WCAG AA × Fail

Large Text (above 18pt) WCAG AAA × Fail

Any Text WCAG AAA × Fail

Black Background



This preview shows how the YUV color 170.8050, -14.2009, 28.2350 looks on a black background.

Color Contrast Check

Large Text (above 18pt) WCAG AA ✓ Pass

Any Text WCAG AA ✓ Pass

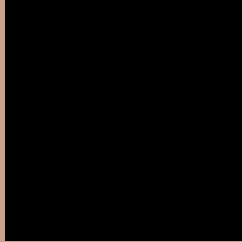
Large Text (above 18pt) WCAG AAA ✓ Pass

Any Text WCAG AAA ✓ Pass

If you want to check with other color combinations, try the [Color Contrast Checker](#).

YUV 170.8050, -14.2009, 28.2350

Background



This preview shows how black text looks on a background with the YUV color 170.8050, -14.2009, 28.2350.



This preview shows how white text looks on a background with the YUV color 170.8050, -14.2009, 28.2350.

28.2350.

Color Blindness Simulation

Color vision deficiency is a very complex topic, and I could not describe the different causes any better than Wikipedia does, so if you want to learn more, you should check out their [article about color blindness](#).

Dichromacy



Original Color

170.8050, -14.2009, 28.2350

Protanopia

169.0690, -11.3730, 7.8325

Deuteranopia

170.3590, -14.4740, 22.4872



Tritanopia

172.3180, -2.1288, 29.5391

Trichromacy



Original Color

170.8050, -14.2009, 28.2350

Protanomaly

169.8850, -12.2683, 15.0099

Deuteranomaly

170.6690, -14.6268, 24.8463

Tritanomaly

171.5800, -6.2019, 29.3093

Monochromacy



Original Color

170.8050, -14.2009, 28.2350

Achromatopsia

171.0000, 0.0000, 0.0000

Achromatomaly

170.9860, -5.4161, 10.5363

CSS Examples

Text

The CSS property to change the color of the text to YUV 170.8050, -14.2009, 28.2350 is called "color". The color property can be set on classes, ids or directly on the HTML element.

This example shows how text in the color `rgb(203, 160, 142)` looks like.

```
.text, #text, p{  
    color:rgb(203, 160, 142)  
}
```

If you want to add a text shadow in that color use the text-shadow property, you can generate a text shadow directly with our [CSS Text Shadow Generator](#).

Here you see how black text with a 4 pixel rgb(203, 160, 142) colored shadow looks like.

```
.shadow{ text-shadow: 4px 4px 2px rgb(203, 160, 142) }
```

Border

The CSS property to change the border of an element to YUV 170.8050, -14.2009, 28.2350 is called "border".

The border property can be set on classes, ids or directly on the HTML element.

This example shows the color as border, it can be applied via the CSS property "border" or "border-color".

```
.border, #border, table{ border:4px solid rgb(203, 160, 142) }
```


If only the border color should be changed use the property `border-color`.

```
.border{ border-color:rgb(203, 160, 142) }
```

If you want to add a box shadow in that color use:

Here you see how a box with a 4 pixel `rgb(203, 160, 142)` colored shadow looks like.

```
.boxshadow{ -moz-box-shadow:4px 4px 4px  
4px rgb(203, 160, 142); -webkit-box-  
shadow:4px 4px 4px 4px rgb(203, 160, 142);  
box-shadow:4px 4px 4px 4px rgb(203, 160,  
142) }
```

Background

The CSS property to change the background color of an element to YUV 170.8050, -14.2009, 28.2350 is called "background". The background property can be set on classes, ids or directly on the HTML element.

```
.background, #background, body{  
background: rgb(203, 160, 142) }
```

If only the background color should be changed can be used:

```
.background{ background-color: rgb(203,  
160, 142) }
```

This example shows the color as background, it is applied via the CSS property "background".

To optimize and compress your CSS code, you can use our [online CSS compressor and optimizer](#) based on csstidy. If you want to create a linear or radial gradient as background or border, check our [CSS Gradient Generator](#).

Hey! You found this booklet interesting? Support Converting Colors with the new Membership Option!

The pro membership hides all ads, plus gives you double the colors in the color bucket, and more awesome pro features!

[Learn more, Memberships starting at \\$2.50/m!](#)

**Follow me
on Twitter!**

@ConvertingColor