

Converting Colors

YUV(170.9280, -10.8105,
14.0951)

Have a look what the booklet for
YUV(170.9280, -10.8105, 14.0951)
contains.

YUV(170.9280, -10.8105, 14.0951)	3
<i>Conversions</i>	4
<i>Details</i>	6
<i>Harmonies</i>	12
<i>Previews</i>	24
<i>Color Blindness Simulation</i>	28
<i>CSS Examples</i>	31

Color

**YUV(170.9280, -10.8105,
14.0951)**

Conversions

Conversions Part 1

Format	Color
Hex	BBA795
RGB	187, 167, 149
RGB Percent	73%, 65%, 58%
CMY	0.2667, 0.3451, 0.4157
CMYK	0.00, 0.11, 0.20, 0.27
HSL	28°, 22%, 66%
HSV	28°, 20%, 73%
XYZ	39.7370, 40.3722, 34.1320
YIQ	170.9280, 17.6980, -1.3580

Conversions

Conversions Part 2

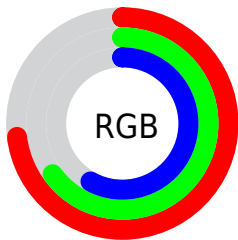
Format	Color
RYB	187, 183, 149
Decimal	12298133
CIELab	69.73, 4.33, 11.96
CIELCh	70, 12.715, 70.093
Yxy	40.3722, 0.3478, 0.3534
Android (android.graphics.Color)	4290488213 (0xFFBBA795)
YUV	170.9280, -10.8105, 14.0951
Hunter-Lab	63.5391, 0.4397, 12.6279

Details

The YUV color **170.9280, -10.8105, 14.0951** is a light color, and the websafe version is hex **999999**. A complement of this color would be **165.0720, 10.8105, -14.0951**, and the grayscale version is **171.0000, 0.0000, 0.0000**.

A 20% lighter version of the original color is **226.1130, -11.3947, 14.8099**, and **118.4440, -10.0789, 12.7656** is the 20% darker color. If you saturate the color by 10%, you get **162.8920, -16.2158, 21.1427**, and if you desaturate by 10%, it is **178.9640, -5.4053, 7.0476**.

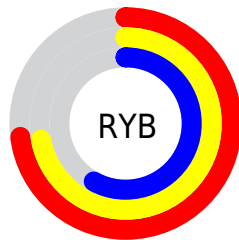
Distribution



Red (73%)

Green (65%)

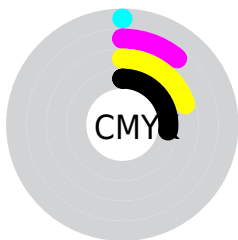
Blue (58%)



Red (73%)

Yellow (72%)

Blue (58%)

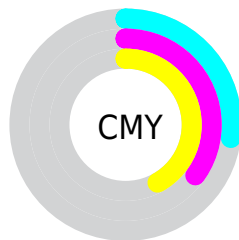


Cyan (0%)

Magenta (11%)

Yellow (20%)

Black (27%)



Cyan (27%)

Magenta (35%)

Yellow (42%)

Brightness & Saturation Gradients

These gradients show how the YUV color 170.9280, -10.8105, 14.0951 changes by changing the brightness by 10 percent. The first figure shows a shift by +10% for each color and the second figure -10%.

Similar to the brightness gradients but the following saturation gradients show a change of the YUV color 170.9280, -10.8105, 14.0951 by changing the saturation by 10% instead.

■ 170.9280,
-10.8105, 14.0951

■ 170.9280,
-10.8105, 14.0951

255.0000, 0.0000,
0.0000

■ 144.6290,
-10.6631, 13.4804

■ 226.1130,
-11.3947, 14.8099

■ 118.4440,
-10.0789, 12.7656

■ 249.9160, -9.3256,
4.4587

■ 94.1450, -9.9315,
12.1508

■ 70.0740, -8.9105,
11.3361

■ 47.7750, -8.7631,
10.7213

■ 26.2480, -9.4893,
10.3065

■ 2.3920, -1.1793,

4.9182

■ 0.0000, 0.0000,
0.0000

■ 170.9280,
-10.8105, 14.0951

■ 170.9280,
-10.8105, 14.0951

■ 162.8920,
-16.2158, 21.1427

■ 178.9640, -5.4053,
7.0476

■ 154.9700,
-21.1842, 28.0903

■ 186.8860, -0.4368,
0.1000

■ 146.9340,
-26.5895, 35.1379

■ 194.9220, 4.9685,
-6.9476

■ 139.4850,
-32.2841, 41.6707

■ 202.3710, 10.6631,
-13.4804

■ 131.5630,
-37.2526, 48.6182

■ 210.4070, 16.0683,
-20.5279

■ 123.5270,
-42.6578, 55.6658

■ 217.6450, 18.4160,
-26.8757

■ 115.4910,
-48.0631, 62.7134

■ 223.5150, 15.5221,
-32.0237

■ 108.1560,
-53.3209, 69.1462

■ 229.3850, 12.6282,
-37.1716

■ 234.6680, 10.0237,
-41.8048

Harmonies

Analogous

The Analogous color harmony consists of three colors that are next to each other on the color wheel.



172.0580, -7.9166, 19.2431



170.9280, -10.8105, 14.0951



169.8730, -10.7834, 5.3734

Triad

The Triadic color harmony groups three colors that are evenly spaced from another and form a triangle on the color wheel.



170.9280, -10.8105, 14.0951



166.1930, 3.8489, -21.2173



171.7970, 7.9881, 4.5630

Complementary

The Complementary color scheme is a pair of colors which are on the opposite of each other on the color wheel.



170.9280, -10.8105, 14.0951



165.0720, 10.8105, -14.0951

Split Complementary

Split-complementary colors differ from the complementary color scheme. The scheme consists of three colors, the original color and two neighbors of the complement color.



170.5290, 11.0782, -6.6029



170.9280, -10.8105, 14.0951



166.8600, 8.9430, -21.8022

Square

The Square scheme is like the rectangle color scheme, but the four colors are evenly spaced on the color wheel.



170.9280, -10.8105, 14.0951



167.2170, -2.5720, -15.0993



168.8760, 11.4001, -16.5543



172.4840, 2.7194, 14.4845

Rectangle

The Rectangle color scheme consists of four colors that form a rectangle on the color wheel.



170.9280, -10.8105, 14.0951



168.5840, -9.1619, -1.3892



168.8760, 11.4001, -16.5543



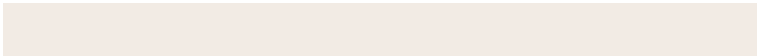
171.4160, 9.1619, 1.3892

Sweetspot

The Sweet Spot groups the original color and five complimentary colors.



170.9280, -10.8105, 14.0951



236.2950, -4.0894, 5.0033



162.6420, 3.1345, 21.3620



118.7400, -2.3368, 2.8590



250.0000, 0.0000, 0.0000



122.0000, 0.0000, 0.0000

Same Dimension

The Same Dimension uses a secret algorithm to generate beautiful new colors.



170.9280, -10.8105, 14.0951



217.7780, -16.6526, 21.2427



182.0810, -16.3089, 4.3140



90.0390, -2.4842, 3.4738



91.2670, -44.9946, 58.5248



17.4870, -8.6211, 11.8509

Inverse Universe

The Inverse Universe completely reimagines the original color for something new.



165.0720, 10.8105, -14.0951



208.8090, 16.3632, -21.7575



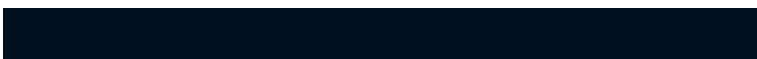
153.9190, 16.3089, -4.3140



88.9610, 2.4842, -3.4738



66.7330, 44.9946, -58.5248



12.9260, 8.9105, -11.3361

Previews

White Background



This preview shows how the YUV color 170.9280, -10.8105, 14.0951 looks on a white background.

Color Contrast Check

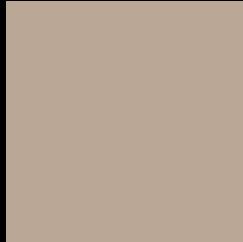
Large Text (above 18pt) WCAG AA × Fail

Any Text WCAG AA × Fail

Large Text (above 18pt) WCAG AAA × Fail

Any Text WCAG AAA × Fail

Black Background



This preview shows how the YUV color 170.9280, -10.8105, 14.0951 looks on a black background.

Color Contrast Check

Large Text (above 18pt) WCAG AA ✓ Pass

Any Text WCAG AA ✓ Pass

Large Text (above 18pt) WCAG AAA ✓ Pass

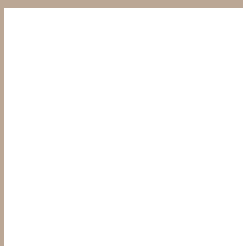
Any Text WCAG AAA ✓ Pass

If you want to check with other color combinations, try the [Color Contrast Checker](#).

YUV 170.9280, -10.8105, 14.0951 Background



This preview shows how black text looks on a background with the YUV color 170.9280, -10.8105, 14.0951.



This preview shows how white text looks on a background with the YUV color 170.9280, -10.8105, 14.0951.

Color Blindness Simulation

Color vision deficiency is a very complex topic, and I could not describe the different causes any better than Wikipedia does, so if you want to learn more, you should check out their [article about color blindness](#).

Dichromacy



Original Color

170.9280, -10.8105, 14.0951

Protanopia

170.2260, -9.4784, 6.8178

Deuteranopia

171.3740, -10.5374, 19.8430



Tritanopia

172.5550, 1.6984, 15.2993

Trichromacy



Original Color

170.9280, -10.8105, 14.0951

Protanomaly

170.4220, -10.0680, 9.2769

Deuteranomaly

171.0640, -10.3846, 17.4839

Tritanomaly

171.7030, -2.8116, 15.1695

Monochromacy



Original Color

170.9280, -10.8105, 14.0951

Achromatopsia

171.0000, 0.0000, 0.0000

Achromatomaly

171.2950, -4.0894, 5.0033

CSS Examples

Text

The CSS property to change the color of the text to YUV 170.9280, -10.8105, 14.0951 is called "color". The color property can be set on classes, ids or directly on the HTML element.

This example shows how text in the color `rgb(187, 167, 149)` looks like.

```
.text, #text, p{  
    color:rgb(187, 167, 149)  
}
```

If you want to add a text shadow in that color use the text-shadow property, you can generate a text shadow directly with our [CSS Text Shadow Generator](#).

Here you see how black text with a 4 pixel rgb(187, 167, 149) colored shadow looks like.

```
.shadow{ text-shadow: 4px 4px 2px rgb(187, 167, 149) }
```

Border

The CSS property to change the border of an element to YUV 170.9280, -10.8105, 14.0951 is called "border".

The border property can be set on classes, ids or directly on the HTML element.

This example shows the color as border, it can be applied via the CSS property "border" or "border-color".

```
.border, #border, table{ border:4px solid rgb(187, 167, 149) }
```


If only the border color should be changed use the property `border-color`.

```
.border{ border-color:rgb(187, 167, 149) }
```

If you want to add a box shadow in that color use:

Here you see how a box with a 4 pixel `rgb(187, 167, 149)` colored shadow looks like.

```
.boxshadow{ -moz-box-shadow:4px 4px 4px  
4px rgb(187, 167, 149); -webkit-box-  
shadow:4px 4px 4px 4px rgb(187, 167, 149);  
box-shadow:4px 4px 4px 4px rgb(187, 167,  
149) }
```

Background

The CSS property to change the background color of an element to YUV 170.9280, -10.8105, 14.0951 is called "background". The background property can be set on classes, ids or directly on the HTML element.

```
.background, #background, body{  
background: rgb(187, 167, 149) }
```

If only the background color should be changed can be used:

```
.background{ background-color: rgb(187,  
167, 149) }
```

This example shows the color as background, it is applied via the CSS property "background".

To optimize and compress your CSS code, you can use our [online CSS compressor and optimizer](#) based on csstidy. If you want to create a linear or radial gradient as background or border, check our [CSS Gradient Generator](#).

Hey! You found this booklet interesting? Support Converting Colors with the new Membership Option!

The pro membership hides all ads, plus gives you double the colors in the color bucket, and more awesome pro features!

[Learn more, Memberships starting at \\$2.50/m!](#)

**Follow me
on Twitter!**

@ConvertingColor