

Converting Colors

YUV(171.0960, -22.2323,
37.6268)

Have a look what the booklet for
YUV(171.0960, -22.2323, 37.6268)
contains.

YUV(171.0960, -22.2323, 37.6268)	3
<i>Conversions</i>	4
<i>Details</i>	6
<i>Harmonies</i>	12
<i>Previews</i>	24
<i>Color Blindness Simulation</i>	28
<i>CSS Examples</i>	31

Color

**YUV(171.0960, -22.2323,
37.6268)**

Conversions

Conversions Part 1

Format	Color
Hex	D69E7E
RGB	214, 158, 126
RGB Percent	84%, 62%, 49%
CMY	0.1608, 0.3804, 0.5059
CMYK	0.00, 0.26, 0.41, 0.16
HSL	22°, 52%, 67%
HSV	22°, 41%, 84%
XYZ	43.7243, 40.2562, 25.2044
YIQ	171.0960, 43.6480, 1.9200

Conversions

Conversions Part 2

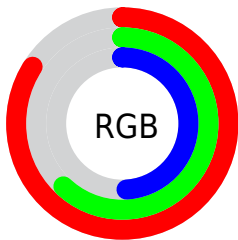
Format	Color
R_{YB}	214, 176, 126
Decimal	14065278
CIE _{Lab}	69.65, 16.79, 24.87
CIE _{LCh}	70, 30.012, 55.978
Yxy	40.2562, 0.4005, 0.3687
Android (android.graphics.Color)	4292255358 (0xFFD69E7E)
YUV	171.0960, -22.2323, 37.6268
Hunter-Lab	63.4478, 11.9776, 20.8607

Details

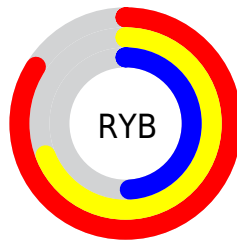
The YUV color $171.0960, -22.2323, 37.6268$ is a light color, and the websafe version is hex $CC9966$. A complement of this color would be $168.9040, 22.2323, -37.6268$, and the grayscale version is $171.0000, 0.0000, 0.0000$.

A 20% lighter version of the original color is $221.6820, -21.0422, 29.2199$, and $117.9430, -20.1849, 34.2530$ is the 20% darker color. If you saturate the color by 10%, you get $160.4840, -27.3536, 46.9335$, and if you desaturate by 10%, it is $181.7080, -17.1110, 28.3201$.

Distribution



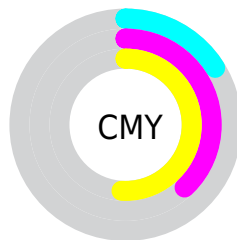
- Red (84%)
- Green (62%)
- Blue (49%)



- Red (84%)
- Yellow (69%)
- Blue (49%)



- Cyan (0%)
- Magenta (26%)
- Yellow (41%)
- Black (16%)



- Cyan (16%)
- Magenta (38%)
- Yellow (51%)

Brightness & Saturation Gradients

These gradients show how the YUV color 171.0960, -22.2323, 37.6268 changes by changing the brightness by 10 percent. The first figure shows a shift by +10% for each color and the second figure -10%.

Similar to the brightness gradients but the following saturation gradients show a change of the YUV color 171.0960, -22.2323, 37.6268 by changing the saturation by 10% instead.

■ 171.0960,
-22.2323, 37.6268

■ 171.0960,
-22.2323, 37.6268

255.0000, 0.0000,
0.0000

■ 144.3130,
-21.3533, 35.6825

■ 221.6820,
-21.0422, 29.2199

■ 117.9430,
-20.1849, 34.2530

■ 241.1960,
-17.3516, 12.1061

■ 93.1600, -19.3059,
32.3087

■ 252.7200, -8.7360,
1.9996

■ 69.0780, -18.2795,
29.7496

■ 45.7680, -18.1266,
27.3905

■ 24.9400, -12.2954,
23.7316

■ 8.7850, -3.8380,

17.7286

■ 0.0000, 0.0000,
0.0000

■ 171.0960,
-22.2323, 37.6268

■ 171.0960,
-22.2323, 37.6268

■ 160.4840,
-27.3536, 46.9335

■ 181.7080,
-17.1110, 28.3201

■ 150.3450,
-33.2011, 55.8254

■ 191.8470,
-11.2636, 19.4282

■ 139.7330,
-38.3224, 65.1322

■ 202.4590, -6.1423,
10.1215

■ 129.5940,
-44.1698, 74.0241

■ 212.5980, -0.2948,
1.2296

■ 118.9820,
-49.2911, 83.3308

■ 223.2100, 4.8265,
-8.0772

■ 109.7720,
-54.1176, 91.4080

■ 233.8220, 9.9478,
-17.3839

■ 241.5670, 6.6225,
-24.1763

■ 242.7410, 6.0437,
-25.2059

Harmonies

Analogous

The Analogous color harmony consists of three colors that are next to each other on the color wheel.



172.4850, -12.0711, 45.1787



171.0960, -22.2323, 37.6268



168.9600, -26.1093, 21.0831

Triad

The Triadic color harmony groups three colors that are evenly spaced from another and form a triangle on the color wheel.



171.0960, -22.2323, 37.6268



157.9030, 3.4988, -49.0269



171.7650, 23.2869, -2.4249

Complementary

The Complementary color scheme is a pair of colors which are on the opposite of each other on the color wheel.



171.0960, -22.2323, 37.6268



168.9040, 22.2323, -37.6268

Split Complementary

Split-complementary colors differ from the complementary color scheme. The scheme consists of three colors, the original color and two neighbors of the complement color.



166.2450, 28.4732, -32.6639



171.0960, -22.2323, 37.6268



155.4140, 18.5299, -63.5071

Square

The Square scheme is like the rectangle color scheme, but the four colors are evenly spaced on the color wheel.



171.0960, -22.2323, 37.6268



162.4470, -11.5594, -25.8250



158.7490, 27.2387, -56.7849



173.9980, 13.3120, 23.6808

Rectangle

The Rectangle color scheme consists of four colors that form a rectangle on the color wheel.



171.0960, -22.2323, 37.6268



166.9150, -24.6081, 6.2135



158.7490, 27.2387, -56.7849



170.5680, 25.3560, -12.7761

Sweetspot

The Sweet Spot groups the original color and five complimentary colors.



171.0960, -22.2323, 37.6268



240.3130, -8.0423, 12.8805



158.8100, 11.9257, 48.4016



118.9040, -4.3897, 7.9772



0.0000, 0.0000, 0.0000



128.0000, 0.0000, 0.0000

Same Dimension

The Same Dimension uses a secret algorithm to generate beautiful new colors.



171.0960, -22.2323, 37.6268



193.7900, -31.4485, 53.6812



196.3370, -34.6761, 15.4905



101.6370, -2.7790, 4.7034



87.5230, -43.1488, 73.2093



22.2490, -10.9688, 18.1986

Inverse Universe

The Inverse Universe completely reimagines the original color for something new.



168.9040, 22.2323, -37.6268



191.2100, 31.4485, -53.6812



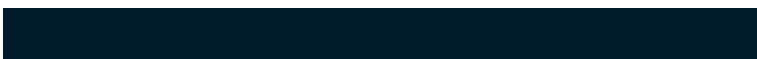
143.6630, 34.6761, -15.4905



101.3630, 2.7790, -4.7034



83.4770, 43.1488, -73.2093



21.3380, 10.6794, -18.7134

Previews

White Background



This preview shows how the YUV color 171.0960, -22.2323, 37.6268 looks on a white background.

Color Contrast Check

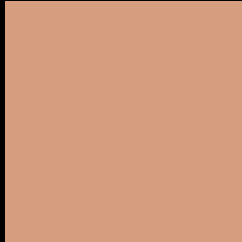
Large Text (above 18pt) WCAG AA × Fail

Any Text WCAG AA × Fail

Large Text (above 18pt) WCAG AAA × Fail

Any Text WCAG AAA × Fail

Black Background



This preview shows how the YUV color 171.0960, -22.2323, 37.6268 looks on a black background.

Color Contrast Check

Large Text (above 18pt) WCAG AA ✓ Pass

Any Text WCAG AA ✓ Pass

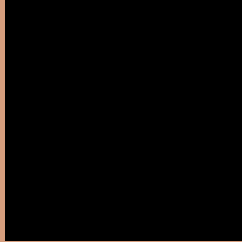
Large Text (above 18pt) WCAG AAA ✓ Pass

Any Text WCAG AAA ✓ Pass

If you want to check with other color combinations, try the [Color Contrast Checker](#).

YUV 171.0960, -22.2323, 37.6268

Background



This preview shows how black text looks on a background with the YUV color 171.0960, -22.2323, 37.6268.



This preview shows how white text looks on a background with the YUV color 171.0960, -22.2323, 37.6268.

37.6268.

Color Blindness Simulation

Color vision deficiency is a very complex topic, and I could not describe the different causes any better than Wikipedia does, so if you want to learn more, you should check out their [article about color blindness](#).

Dichromacy



Original Color

171.0960, -22.2323, 37.6268

Protanopia

169.1420, -18.8040, 11.2765

Deuteranopia

170.3290, -22.3472, 27.7755



Tritanopia

173.6890, -4.7767, 38.8607

Trichromacy



Original Color

171.0960, -22.2323, 37.6268

Protanomaly

170.1540, -20.2889, 20.9129

Deuteranomaly

170.3510, -22.3580, 31.2642

Tritanomaly

172.9680, -11.3232, 38.6161

Monochromacy



Original Color

171.0960, -22.2323, 37.6268

Achromatopsia

171.0000, 0.0000, 0.0000

Achromatomaly

171.0250, -7.9003, 14.0101

CSS Examples

Text

The CSS property to change the color of the text to YUV 171.0960, -22.2323, 37.6268 is called "color". The color property can be set on classes, ids or directly on the HTML element.

This example shows how text in the color `rgb(214, 158, 126)` looks like.

```
.text, #text, p{  
    color:rgb(214, 158, 126)  
}
```

If you want to add a text shadow in that color use the text-shadow property, you can generate a text shadow directly with our [CSS Text Shadow Generator](#).

Here you see how black text with a 4 pixel rgb(214, 158, 126) colored shadow looks like.

```
.shadow{ text-shadow: 4px 4px 2px rgb(214, 158, 126) }
```

Border

The CSS property to change the border of an element to YUV 171.0960, -22.2323, 37.6268 is called "border".

The border property can be set on classes, ids or directly on the HTML element.

This example shows the color as border, it can be applied via the CSS property "border" or "border-color".

```
.border, #border, table{ border:4px solid rgb(214, 158, 126) }
```


If only the border color should be changed use the property `border-color`.

```
.border{ border-color:rgb(214, 158, 126) }
```

If you want to add a box shadow in that color use:

Here you see how a box with a 4 pixel `rgb(214, 158, 126)` colored shadow looks like.

```
.boxshadow{ -moz-box-shadow:4px 4px 4px  
4px rgb(214, 158, 126); -webkit-box-  
shadow:4px 4px 4px 4px rgb(214, 158, 126);  
box-shadow:4px 4px 4px 4px rgb(214, 158,  
126) }
```

Background

The CSS property to change the background color of an element to YUV 171.0960, -22.2323, 37.6268 is called "background". The background property can be set on classes, ids or directly on the HTML element.

```
.background, #background, body{  
background: rgb(214, 158, 126) }
```

If only the background color should be changed can be used:

```
.background{ background-color: rgb(214,  
158, 126) }
```

This example shows the color as background, it is applied via the CSS property "background".

To optimize and compress your CSS code, you can use our [online CSS compressor and optimizer](#) based on csstidy. If you want to create a linear or radial gradient as background or border, check our [CSS Gradient Generator](#).

Hey! You found this booklet interesting? Support Converting Colors with the new Membership Option!

The pro membership hides all ads, plus gives you double the colors in the color bucket, and more awesome pro features!

[Learn more, Memberships starting at \\$2.50/m!](#)

**Follow me
on Twitter!**

@ConvertingColor