

Converting Colors

YUV(171.1000, -18.2903,
33.2383)

Have a look what the booklet for
YUV(171.1000, -18.2903, 33.2383)
contains.

YUV(171.1000, -18.2903, 33.2383)	3
<i>Conversions</i>	4
<i>Details</i>	6
<i>Harmonies</i>	12
<i>Previews</i>	24
<i>Color Blindness Simulation</i>	28
<i>CSS Examples</i>	31

Color

**YUV(171.1000, -18.2903,
33.2383)**

Conversions

Conversions Part 1

Format	Color
Hex	D19F86
RGB	209, 159, 134
RGB Percent	82%, 62%, 53%
CMY	0.1804, 0.3765, 0.4745
CMYK	0.00, 0.24, 0.36, 0.18
HSL	20°, 45%, 67%
HSV	20°, 36%, 82%
XYZ	42.9957, 40.0728, 28.0230
YIQ	171.1000, 37.8250, 2.8250

Conversions

Conversions Part 2

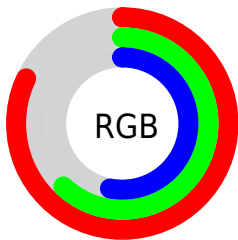
Format	Color
R _Y B	209, 172, 134
Decimal	13737862
CIE Lab	69.52, 15.20, 20.23
CIE LCh	70, 25.305, 53.089
Yxy	40.0728, 0.3870, 0.3607
Android (android.graphics.Color)	4291927942 (0xFFD19F86)
YUV	171.1000, -18.2903, 33.2383
Hunter-Lab	63.3031, 10.4575, 18.0657

Details

The YUV color **171.1000, -18.2903, 33.2383** is a light color, and the websafe version is hex **CC9999**. A complement of this color would be **171.9000, 18.2903, -33.2383**, and the grayscale version is **171.0000, 0.0000, 0.0000**.

A 20% lighter version of the original color is **223.1810, -17.8372, 27.9053**, and **118.1320, -16.8271, 30.5792** is the 20% darker color. If you saturate the color by 10%, you get **160.4880, -23.4116, 42.5450**, and if you desaturate by 10%, it is **181.7120, -13.1690, 23.9316**.

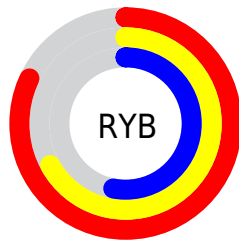
Distribution



Red (82%)

Green (62%)

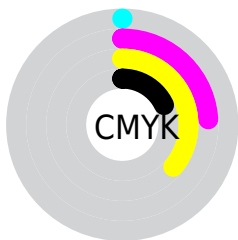
Blue (53%)



Red (82%)

Yellow (67%)

Blue (53%)

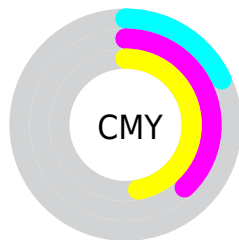


Cyan (0%)

Magenta (24%)

Yellow (36%)

Black (18%)



Cyan (18%)

Magenta (38%)

Yellow (47%)

Brightness & Saturation Gradients

These gradients show how the YUV color 171.1000, -18.2903, 33.2383 changes by changing the brightness by 10 percent. The first figure shows a shift by +10% for each color and the second figure -10%.

Similar to the brightness gradients but the following saturation gradients show a change of the YUV color 171.1000, -18.2903, 33.2383 by changing the saturation by 10% instead.

■ 171.1000,
-18.2903, 33.2383

■ 171.1000,
-18.2903, 33.2383

255.0000, 0.0000,
0.0000

■ 144.6160,
-17.5587, 31.9088

■ 223.1810,
-17.8372, 27.9053

■ 118.1320,
-16.8271, 30.5792

■ 242.8090,
-13.7098, 10.6915

■ 93.3490, -15.9481,
28.6349

■ 253.7460, -4.8048,
1.0998

■ 69.5660, -15.0690,
26.6906

■ 46.4840, -14.0426,
24.1315

■ 24.9290, -12.2900,
21.9873

■ 7.8880, -3.3958,

15.8842

■ 0.0000, 0.0000,
0.0000

■ 171.1000,
-18.2903, 33.2383

■ 171.1000,
-18.2903, 33.2383

■ 160.4880,
-23.4116, 42.5450

■ 181.7120,
-13.1690, 23.9316

■ 149.8760,
-28.5329, 51.8517

■ 192.3240, -8.0477,
14.6249

■ 139.2640,
-33.6542, 61.1585

■ 202.9360, -2.9264,
5.3181

■ 128.6520,
-38.7754, 70.4652

■ 213.5480, 2.1948,
-3.9886

■ 118.1540,
-43.4599, 79.6719

■ 224.1600, 7.3161,
-13.2953

■ 107.5420,
-48.5812, 88.9787

■ 234.2020, 10.2534,
-22.1022

■ 103.5810,
-51.0654, 92.4525

■ 241.2460, 6.7807,
-28.2797

Harmonies

Analogous

The Analogous color harmony consists of three colors that are next to each other on the color wheel.



172.7230, -9.7234, 38.8309



171.1000, -18.2903, 33.2383



169.1000, -21.7413, 20.0833

Triad

The Triadic color harmony groups three colors that are evenly spaced from another and form a triangle on the color wheel.



171.1000, -18.2903, 33.2383



160.3990, 1.2823, -38.0609



171.2440, 20.0927, -4.5990

Complementary

The Complementary color scheme is a pair of colors which are on the opposite of each other on the color wheel.



171.1000, -18.2903, 33.2383



171.9000, 18.2903, -33.2383

Split Complementary

Split-complementary colors differ from the complementary color scheme. The scheme consists of three colors, the original color and two neighbors of the complement color.



166.7140, 23.8050, -28.6902



171.1000, -18.2903, 33.2383



158.9490, 13.8291, -49.0673

Square

The Square scheme is like the rectangle color scheme, but the four colors are evenly spaced on the color wheel.



171.1000, -18.2903, 33.2383



163.7190, -10.7075, -19.0476



161.1480, 22.1120, -45.7338



173.3240, 12.1653, 18.1329

Rectangle

The Rectangle color scheme consists of four colors that form a rectangle on the color wheel.



171.1000, -18.2903, 33.2383



167.8380, -21.1191, 7.1581



161.1480, 22.1120, -45.7338



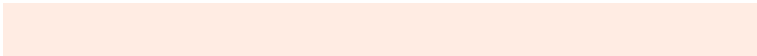
169.6560, 21.8616, -11.9763

Sweetspot

The Sweet Spot groups the original color and five complimentary colors.



171.1000, -18.2903, 33.2383



240.6550, -6.7319, 12.5806



162.1250, 10.7844, 41.1094



119.0180, -3.9529, 7.8772



0.0000, 0.0000, 0.0000



128.0000, 0.0000, 0.0000

Same Dimension

The Same Dimension uses a secret algorithm to generate beautiful new colors.



171.1000, -18.2903, 33.2383



199.6090, -26.9222, 48.5779



193.4060, -29.2872, 13.6759



99.6370, -2.7790, 4.7034



83.1040, -40.9703, 74.4538



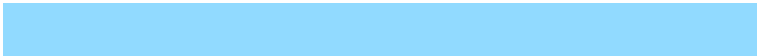
20.4770, -10.0952, 17.9987

Inverse Universe

The Inverse Universe completely reimagines the original color for something new.



171.9000, 18.2903, -33.2383



200.3910, 26.9222, -48.5779



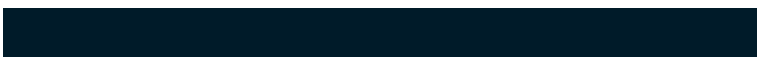
150.1810, 28.9978, -14.1907



99.3630, 2.7790, -4.7034



84.8960, 40.9703, -74.4538



20.5230, 10.0952, -17.9987

Previews

White Background



This preview shows how the YUV color 171.1000, -18.2903, 33.2383 looks on a white background.

Color Contrast Check

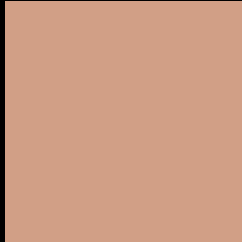
Large Text (above 18pt) WCAG AA × Fail

Any Text WCAG AA × Fail

Large Text (above 18pt) WCAG AAA × Fail

Any Text WCAG AAA × Fail

Black Background



This preview shows how the YUV color 171.1000, -18.2903, 33.2383 looks on a black background.

Color Contrast Check

Large Text (above 18pt) WCAG AA ✓ Pass

Any Text WCAG AA ✓ Pass

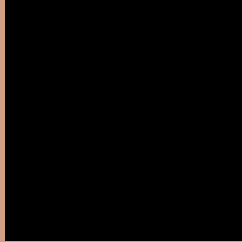
Large Text (above 18pt) WCAG AAA ✓ Pass

Any Text WCAG AAA ✓ Pass

If you want to check with other color combinations, try the [Color Contrast Checker](#).

YUV 171.1000, -18.2903, 33.2383

Background



This preview shows how black text looks on a background with the YUV color 171.1000, -18.2903, 33.2383.



This preview shows how white text looks on a background with the YUV color 171.1000, -18.2903, 33.2383.

Color Blindness Simulation

Color vision deficiency is a very complex topic, and I could not describe the different causes any better than Wikipedia does, so if you want to learn more, you should check out their [article about color blindness](#).

Dichromacy



Original Color

171.1000, -18.2903, 33.2383

Protanopia

169.4560, -15.0148, 9.2471

Deuteranopia

170.3440, -18.4106, 25.1313



Tritanopia

172.7100, -3.3080, 34.4573

Trichromacy



Original Color

171.1000, -18.2903, 33.2383

Protanomaly

170.1690, -16.3523, 18.2688

Deuteranomaly

170.9530, -18.7108, 28.1052

Tritanomaly

172.2170, -8.9810, 34.0127

Monochromacy



Original Color

171.1000, -18.2903, 33.2383

Achromatopsia

171.0000, 0.0000, 0.0000

Achromatomaly

171.3560, -6.5845, 11.9658

CSS Examples

Text

The CSS property to change the color of the text to YUV 171.1000, -18.2903, 33.2383 is called "color". The color property can be set on classes, ids or directly on the HTML element.

This example shows how text in the color `rgb(209, 159, 134)` looks like.

```
.text, #text, p{  
    color:rgb(209, 159, 134)  
}
```

If you want to add a text shadow in that color use the text-shadow property, you can generate a text shadow directly with our [CSS Text Shadow Generator](#).

Here you see how black text with a 4 pixel rgb(209, 159, 134) colored shadow looks like.

```
.shadow{ text-shadow: 4px 4px 2px rgb(209, 159, 134) }
```

Border

The CSS property to change the border of an element to YUV 171.1000, -18.2903, 33.2383 is called "border".

The border property can be set on classes, ids or directly on the HTML element.

This example shows the color as border, it can be applied via the CSS property "border" or "border-color".

```
.border, #border, table{ border:4px solid rgb(209, 159, 134) }
```


If only the border color should be changed use the property `border-color`.

```
.border{ border-color:rgb(209, 159, 134) }
```

If you want to add a box shadow in that color use:

Here you see how a box with a 4 pixel `rgb(209, 159, 134)` colored shadow looks like.

```
.boxshadow{ -moz-box-shadow:4px 4px 4px  
4px rgb(209, 159, 134); -webkit-box-  
shadow:4px 4px 4px 4px rgb(209, 159, 134);  
box-shadow:4px 4px 4px 4px rgb(209, 159,  
134) }
```

Background

The CSS property to change the background color of an element to YUV 171.1000, -18.2903, 33.2383 is called "background". The background property can be set on classes, ids or directly on the HTML element.

```
.background, #background, body{  
background: rgb(209, 159, 134) }
```

If only the background color should be changed can be used:

```
.background{ background-color: rgb(209,  
159, 134) }
```

This example shows the color as background, it is applied via the CSS property "background".

To optimize and compress your CSS code, you can use our [online CSS compressor and optimizer](#) based on csstidy. If you want to create a linear or radial gradient as background or border, check our [CSS Gradient Generator](#).

Hey! You found this booklet interesting? Support Converting Colors with the new Membership Option!

The pro membership hides all ads, plus gives you double the colors in the color bucket, and more awesome pro features!

[Learn more, Memberships starting at \\$2.50/m!](#)

**Follow me
on Twitter!**

@ConvertingColor