

Converting Colors

YUV(171.4130, -6.1196,
49.6268)

Have a look what the booklet for
YUV(171.4130, -6.1196, 49.6268)
contains.

YUV(171.4130, -6.1196, 49.6268)	3
<i>Conversions</i>	4
<i>Details</i>	6
<i>Harmonies</i>	12
<i>Previews</i>	24
<i>Color Blindness Simulation</i>	28
<i>CSS Examples</i>	31

Color

**YUV(171.4130, -6.1196,
49.6268)**

Conversions

Conversions Part 1

Format	Color
Hex	E4919F
RGB	228, 145, 159
RGB Percent	89%, 57%, 62%
CMY	0.1059, 0.4314, 0.3765
CMYK	0.00, 0.36, 0.30, 0.11
HSL	350°, 61%, 73%
HSV	350°, 36%, 89%
XYZ	48.3783, 39.2480, 37.8267
YIQ	171.4130, 44.9740, 21.9500

Conversions

Conversions Part 2

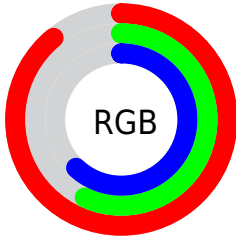
Format	Color
R _Y B	228, 145, 159
Decimal	14979487
CIE Lab	68.93, 33.14, 5.83
CIE LCh	69, 33.646, 9.987
Yxy	39.2480, 0.3856, 0.3129
Android (android.graphics.Color)	4293169567 (0xFFE4919F)
YUV	171.4130, -6.1196, 49.6268
Hunter-Lab	62.6482, 28.2072, 8.0547

Details

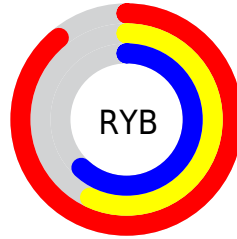
The YUV color **171.4130, -6.1196, 49.6268** is a light color, and the websafe version is hex **FF9999**. A complement of this color would be **201.5870, 6.1196, -49.6268**, and the grayscale version is **171.0000, 0.0000, 0.0000**.

A 20% lighter version of the original color is **218.0410, -1.9922, 32.4130**, and **118.0320, -4.9458, 46.4529** is the 20% darker color. If you saturate the color by 10%, you get **155.7460, -7.7628, 63.3668**, and if you desaturate by 10%, it is **187.0800, -4.4764, 35.8868**.

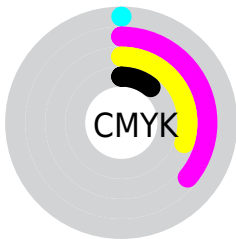
Distribution



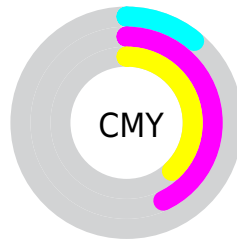
- Red (89%)
- Green (57%)
- Blue (62%)



- Red (89%)
- Yellow (57%)
- Blue (62%)



- Cyan (0%)
- Magenta (36%)
- Yellow (30%)
- Black (11%)



- Cyan (11%)
- Magenta (43%)
- Yellow (38%)

Brightness & Saturation Gradients

These gradients show how the YUV color 171.4130, -6.1196, 49.6268 changes by changing the brightness by 10 percent. The first figure shows a shift by +10% for each color and the second figure -10%.

Similar to the brightness gradients but the following saturation gradients show a change of the YUV color 171.4130, -6.1196, 49.6268 by changing the saturation by 10% instead.

171.4130, -6.1196,
49.6268

171.4130, -6.1196,
49.6268

255.0000, 0.0000,
0.0000

144.5160, -5.6774,
47.7825

218.0410, -1.9922,
32.4130

118.0320, -4.9458,
46.4529

237.6690, 2.1352,
15.1993

92.2490, -4.0668,
44.5086

67.4660, -3.1877,
42.5643

42.2100, -1.5825,
41.0348

20.8890, -1.4243,
36.9313

12.3730, -5.6069,

25.1059

■ 0.0000, 0.0000,
0.0000

■ 171.4130, -6.1196,
49.6268

■ 171.4130, -6.1196,
49.6268

■ 155.7460, -7.7628,
63.3668

■ 187.0800, -4.4764,
35.8868

■ 140.0790, -9.4059,
77.1067

■ 202.7470, -2.8333,
22.1469

■ 124.9990,
-11.3385, 90.3319

■ 217.8270, -0.9007,
8.9217

■ 109.3320,
-12.9817, 104.0718

■ 233.4940, 0.7425,
-4.8182

■ 93.6650, -14.6248,
117.8118

■ 246.8130, 3.5432,
-16.4990

■ 77.9980, -16.2680,
131.5518

■ 246.9270, 3.9800,
-16.5990

■ 72.5040, -17.0105,
136.3700

Harmonies

Analogous

The Analogous color harmony consists of three colors that are next to each other on the color wheel.



172.8210, 8.4692, 36.9910



171.4130, -6.1196, 49.6268



169.9600, -19.2073, 47.3931

Triad

The Triadic color harmony groups three colors that are evenly spaced from another and form a triangle on the color wheel.



171.4130, -6.1196, 49.6268



161.6350, -20.0331, -14.5889



157.6550, 33.2011, -55.8254

Complementary

The Complementary color scheme is a pair of colors which are on the opposite of each other on the color wheel.



171.4130, -6.1196, 49.6268



201.5870, 6.1196, -49.6268

Split Complementary

Split-complementary colors differ from the complementary color scheme. The scheme consists of three colors, the original color and two neighbors of the complement color.



148.8450, 28.1774, -77.9171



171.4130, -6.1196, 49.6268



156.6560, -5.2534, -41.7943

Square

The Square scheme is like the rectangle color scheme, but the four colors are evenly spaced on the color wheel.



171.4130, -6.1196, 49.6268



165.6230, -28.4081, 11.7316



150.7140, 13.4520, -68.1552



167.0660, 30.0405, -21.9829

Rectangle

The Rectangle color scheme consists of four colors that form a rectangle on the color wheel.



171.4130, -6.1196, 49.6268



168.7820, -26.0215, 39.6562



150.7140, 13.4520, -68.1552



153.7740, 32.6494, -65.5768

Sweetspot

The Sweet Spot groups the original color and five complimentary colors.



171.4130, -6.1196, 49.6268



235.9420, -1.9434, 16.7139



174.7940, 26.2306, 33.5067



116.4250, -1.1955, 10.1513



0.0000, 0.0000, 0.0000



128.0000, 0.0000, 0.0000

Same Dimension

The Same Dimension uses a secret algorithm to generate beautiful new colors.



171.4130, -6.1196, 49.6268



178.6540, -8.2104, 66.9554



185.0790, -19.7589, 37.6417



106.8160, -0.8953, 7.1774



56.9410, -13.2819, 107.0457



16.2750, -3.5866, 30.4538

Inverse Universe

The Inverse Universe completely reimagines the original color for something new.



171.4130, -6.1196, 49.6268



178.6540, -8.2104, 66.9554



187.9210, 19.7589, -37.6417



106.8160, -0.8953, 7.1774



56.9410, -13.2819, 107.0457



16.2750, -3.5866, 30.4538

Previews

White Background



This preview shows how the YUV color 171.4130, -6.1196, 49.6268 looks on a white background.

Color Contrast Check

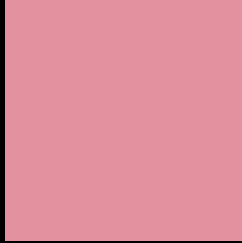
Large Text (above 18pt) WCAG AA × Fail

Any Text WCAG AA × Fail

Large Text (above 18pt) WCAG AAA × Fail

Any Text WCAG AAA × Fail

Black Background



This preview shows how the YUV color 171.4130, -6.1196, 49.6268 looks on a black background.

Color Contrast Check

Large Text (above 18pt) WCAG AA ✓ Pass

Any Text WCAG AA ✓ Pass

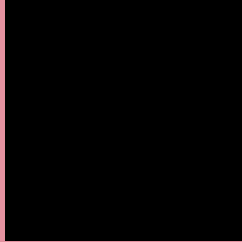
Large Text (above 18pt) WCAG AAA ✓ Pass

Any Text WCAG AAA ✓ Pass

If you want to check with other color combinations, try the [Color Contrast Checker](#).

YUV 171.4130, -6.1196, 49.6268

Background



This preview shows how black text looks on a background with the YUV color 171.4130, -6.1196, 49.6268.



This preview shows how white text looks on a background with the YUV color 171.4130, -6.1196,

49.6268.

Color Blindness Simulation

Color vision deficiency is a very complex topic, and I could not describe the different causes any better than Wikipedia does, so if you want to learn more, you should check out their [article about color blindness](#).

Dichromacy



Original Color

171.4130, -6.1196, 49.6268

Protanopia

169.3530, 1.3050, 1.4444

Deuteranopia

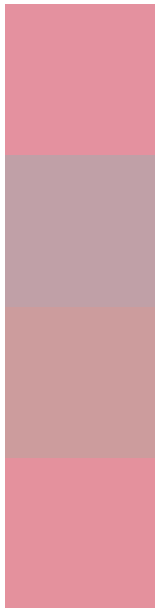
170.2750, -7.0376, 17.2988



Tritanopia

171.0710, -7.4300, 49.9267

Trichromacy



Original Color

171.4130, -6.1196, 49.6268

Protanomaly

170.3660, -1.6594, 18.9730

Deuteranomaly

170.4660, -6.6387, 29.4093

Tritanomaly

171.1850, -6.9932, 49.8268

Monochromacy



Original Color

171.4130, -6.1196, 49.6268

Achromatopsia

171.0000, 0.0000, 0.0000

Achromatomaly

171.5400, -2.2382, 17.9434

CSS Examples

Text

The CSS property to change the color of the text to YUV 171.4130, -6.1196, 49.6268 is called "color". The color property can be set on classes, ids or directly on the HTML element.

This example shows how text in the color `rgb(228, 145, 159)` looks like.

```
.text, #text, p{  
    color:rgb(228, 145, 159)  
}
```

If you want to add a text shadow in that color use the text-shadow property, you can generate a text shadow directly with our [CSS Text Shadow Generator](#).

Here you see how black text with a 4 pixel rgb(228, 145, 159) colored shadow looks like.

```
.shadow{ text-shadow: 4px 4px 2px rgb(228, 145, 159) }
```

Border

The CSS property to change the border of an element to YUV 171.4130, -6.1196, 49.6268 is called "border". The border property can be set on classes, ids or directly on the HTML element.

This example shows the color as border, it can be applied via the CSS property "border" or "border-color".

```
.border, #border, table{ border:4px solid rgb(228, 145, 159) }
```


If only the border color should be changed use the property `border-color`.

```
.border{ border-color:rgb(228, 145, 159) }
```

If you want to add a box shadow in that color use:

Here you see how a box with a 4 pixel `rgb(228, 145, 159)` colored shadow looks like.

```
.boxshadow{ -moz-box-shadow:4px 4px 4px  
4px rgb(228, 145, 159); -webkit-box-  
shadow:4px 4px 4px 4px rgb(228, 145, 159);  
box-shadow:4px 4px 4px 4px rgb(228, 145,  
159) }
```

Background

The CSS property to change the background color of an element to YUV 171.4130, -6.1196, 49.6268 is called "background". The background property can be set on classes, ids or directly on the HTML element.

```
.background, #background, body{  
background: rgb(228, 145, 159) }
```

If only the background color should be changed can be used:

```
.background{ background-color: rgb(228,  
145, 159) }
```

This example shows the color as background, it is applied via the CSS property "background".

To optimize and compress your CSS code, you can use our [online CSS compressor and optimizer](#) based on csstidy. If you want to create a linear or radial gradient as background or border, check our [CSS Gradient Generator](#).

Hey! You found this booklet interesting? Support Converting Colors with the new Membership Option!

The pro membership hides all ads, plus gives you double the colors in the color bucket, and more awesome pro features!

[Learn more, Memberships starting at \\$2.50/m!](#)

**Follow me
on Twitter!**

@ConvertingColor