

Converting Colors

YUV(171.4830, -12.5631,
16.2394)

Have a look what the booklet for
YUV(171.4830, -12.5631, 16.2394)
contains.

YUV(171.4830, -12.5631, 16.2394)	3
<i>Conversions</i>	4
<i>Details</i>	6
<i>Harmonies</i>	12
<i>Previews</i>	24
<i>Color Blindness Simulation</i>	28
<i>CSS Examples</i>	31

Color

**YUV(171.4830, -12.5631,
16.2394)**

Conversions

Conversions Part 1

Format	Color
Hex	BEA792
RGB	190, 167, 146
RGB Percent	75%, 65%, 57%
CMY	0.2549, 0.3451, 0.4275
CMYK	0.00, 0.12, 0.23, 0.25
HSL	29°, 25%, 66%
HSV	29°, 23%, 75%
XYZ	40.2422, 40.6599, 32.9213
YIQ	171.4830, 20.4490, -1.6550

Conversions

Conversions Part 2

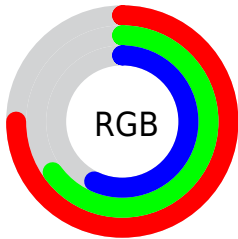
Format	Color
R _Y B	190, 186, 146
Decimal	12494738
CIE Lab	69.94, 5.03, 13.93
CIE LCh	70, 14.812, 70.143
Yxy	40.6599, 0.3535, 0.3572
Android (android.graphics.Color)	4290684818 (0xFFBEA792)
YUV	171.4830, -12.5631, 16.2394
Hunter-Lab	63.7651, 1.0626, 14.0248

Details

The YUV color $171.4830, -12.5631, 16.2394$ is a light color, and the websafe version is hex $CC9999$. A complement of this color would be $164.5170, 12.5631, -16.2394$, and the grayscale version is $172.0000, 0.0000, 0.0000$.

A 20% lighter version of the original color is $226.9670, -13.2947, 17.5689$, and $118.9990, -11.8315, 14.9099$ is the 20% darker color. If you saturate the color by 10%, you get $163.4470, -17.9684, 23.2870$, and if you desaturate by 10%, it is $179.5190, -7.1579, 9.1918$.

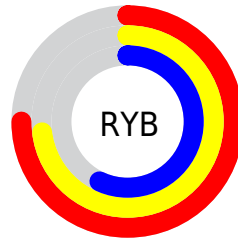
Distribution



Red (75%)

Green (65%)

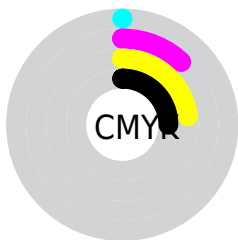
Blue (57%)



Red (75%)

Yellow (73%)

Blue (57%)

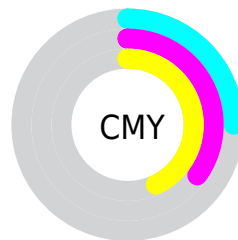


Cyan (0%)

Magenta (12%)

Yellow (23%)

Black (25%)



Cyan (25%)

Magenta (35%)

Yellow (43%)

Brightness & Saturation Gradients

These gradients show how the YUV color 171.4830, -12.5631, 16.2394 changes by changing the brightness by 10 percent. The first figure shows a shift by +10% for each color and the second figure -10%.

Similar to the brightness gradients but the following saturation gradients show a change of the YUV color 171.4830, -12.5631, 16.2394 by changing the saturation by 10% instead.

■ 171.4830,
-12.5631, 16.2394

■ 171.4830,
-12.5631, 16.2394

255.0000, 0.0000,
0.0000

■ 145.1840,
-12.4157, 15.6246

■ 226.9670,
-13.2947, 17.5689

■ 118.9990,
-11.8315, 14.9099

■ 249.5740,
-10.6360, 4.7586

■ 94.5150, -11.0999,
13.5803

■ 70.3300, -10.5157,
12.8656

■ 48.1450, -9.9315,
12.1508

■ 26.3900, -11.5313,
11.9360

■ 3.5880, -1.7689,

7.3773

■ 0.0000, 0.0000,
0.0000

■ 171.4830,
-12.5631, 16.2394

■ 171.4830,
-12.5631, 16.2394

■ 163.4470,
-17.9684, 23.2870

■ 179.5190, -7.1579,
9.1918

■ 155.4110,
-23.3736, 30.3346

■ 187.5550, -1.7526,
2.1443

■ 147.3750,
-28.7789, 37.3821

■ 195.5910, 3.6526,
-4.9033

■ 139.3390,
-34.1841, 44.4297

■ 203.6270, 9.0579,
-11.9509

■ 131.3030,
-39.5894, 51.4773

■ 211.6630, 14.4631,
-18.9985

■ 123.2670,
-44.9946, 58.5248

■ 219.1290, 17.6844,
-25.5461

■ 115.2310,
-50.3999, 65.5724

■ 224.9990, 14.7905,
-30.6941

■ 110.2270,
-54.3419, 69.9609

■ 230.2820, 12.1860,
-35.3273

■ 235.5650, 9.5815,
-39.9605

Harmonies

Analogous

The Analogous color harmony consists of three colors that are next to each other on the color wheel.



172.4390, -9.0904, 22.4170



171.4830, -12.5631, 16.2394



169.8300, -12.2412, 6.2881

Triad

The Triadic color harmony groups three colors that are evenly spaced from another and form a triangle on the color wheel.



171.4830, -12.5631, 16.2394



166.2850, 4.2965, -24.8059



172.7370, 9.0037, 5.4927

Complementary

The Complementary color scheme is a pair of colors which are on the opposite of each other on the color wheel.



171.4830, -12.5631, 16.2394



164.5170, 12.5631, -16.2394

Split Complementary

Split-complementary colors differ from the complementary color scheme. The scheme consists of three colors, the original color and two neighbors of the complement color.



171.2730, 12.6834, -8.1324



171.4830, -12.5631, 16.2394



166.8810, 10.4117, -26.2056

Square

The Square scheme is like the rectangle color scheme, but the four colors are evenly spaced on the color wheel.



171.4830, -12.5631, 16.2394



166.7930, -2.8559, -17.3585



168.7230, 13.4476, -19.9281



173.6090, 3.1508, 16.1289

Rectangle

The Rectangle color scheme consists of four colors that form a rectangle on the color wheel.



171.4830, -12.5631, 16.2394



168.9430, -10.3249, -1.7040



168.7230, 13.4476, -19.9281



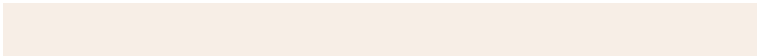
172.1710, 10.7617, 1.6040

Sweetspot

The Sweet Spot groups the original color and five complimentary colors.



171.4830, -12.5631, 16.2394



239.7790, -4.8210, 6.3328



161.7780, 3.5604, 24.7507



120.9250, -2.9210, 3.5738



252.0000, 0.0000, 0.0000



125.0000, 0.0000, 0.0000

Same Dimension

The Same Dimension uses a secret algorithm to generate beautiful new colors.



171.4830, -12.5631, 16.2394



218.0020, -19.7210, 25.4312



184.3970, -18.9297, 4.9138



90.0390, -2.4842, 3.4738



91.2670, -44.9946, 58.5248



18.0740, -8.9105, 11.3361

Inverse Universe

The Inverse Universe completely reimagines the original color for something new.



164.5170, 12.5631, -16.2394



206.9980, 19.7210, -25.4312



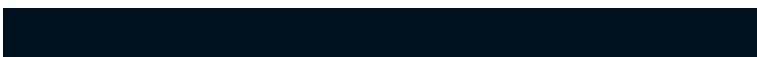
151.6030, 18.9297, -4.9138



88.9610, 2.4842, -3.4738



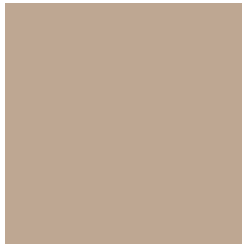
66.7330, 44.9946, -58.5248



12.9260, 8.9105, -11.3361

Previews

White Background



This preview shows how the YUV color 171.4830, -12.5631, 16.2394 looks on a white background.

Color Contrast Check

Large Text (above 18pt) WCAG AA × Fail

Any Text WCAG AA × Fail

Large Text (above 18pt) WCAG AAA × Fail

Any Text WCAG AAA × Fail

Black Background



This preview shows how the YUV color 171.4830, -12.5631, 16.2394 looks on a black background.

Color Contrast Check

Large Text (above 18pt) WCAG AA ✓ Pass

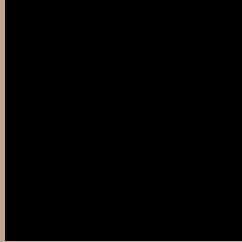
Any Text WCAG AA ✓ Pass

Large Text (above 18pt) WCAG AAA ✓ Pass

Any Text WCAG AAA ✓ Pass

If you want to check with other color combinations, try the [Color Contrast Checker](#).

YUV 171.4830, -12.5631, 16.2394 Background



This preview shows how black text looks on a background with the YUV color 171.4830, -12.5631, 16.2394.



This preview shows how white text looks on a background with the YUV color 171.4830, -12.5631, 16.2394.

Color Blindness Simulation

Color vision deficiency is a very complex topic, and I could not describe the different causes any better than Wikipedia does, so if you want to learn more, you should check out their [article about color blindness](#).

Dichromacy



Original Color

171.4830, -12.5631, 16.2394

Protanopia

170.7700, -11.2256, 7.2177

Deuteranopia

172.1030, -12.8688, 20.9577



Tritanopia

173.6370, 0.6720, 17.8584

Trichromacy



Original Color

171.4830, -12.5631, 16.2394

Protanomaly

171.2650, -11.9626, 10.2916

Deuteranomaly

172.0920, -12.8634, 19.2133

Tritanomaly

172.6710, -4.2748, 17.8285

Monochromacy



Original Color

171.4830, -12.5631, 16.2394

Achromatopsia

171.0000, 0.0000, 0.0000

Achromatomaly

171.4800, -4.6736, 5.7180

CSS Examples

Text

The CSS property to change the color of the text to YUV 171.4830, -12.5631, 16.2394 is called "color". The color property can be set on classes, ids or directly on the HTML element.

This example shows how text in the color `rgb(190, 167, 146)` looks like.

```
.text, #text, p{  
    color:rgb(190, 167, 146)  
}
```

If you want to add a text shadow in that color use the text-shadow property, you can generate a text shadow directly with our [CSS Text Shadow Generator](#).

Here you see how black text with a 4 pixel rgb(190, 167, 146) colored shadow looks like.

```
.shadow{ text-shadow: 4px 4px 2px rgb(190, 167, 146) }
```

Border

The CSS property to change the border of an element to YUV 171.4830, -12.5631, 16.2394 is called "border".

The border property can be set on classes, ids or directly on the HTML element.

This example shows the color as border, it can be applied via the CSS property "border" or "border-color".

```
.border, #border, table{ border:4px solid rgb(190, 167, 146) }
```


If only the border color should be changed use the property border-color.

```
.border{ border-color:rgb(190, 167, 146) }
```

If you want to add a box shadow in that color use:

Here you see how a box with a 4 pixel rgb(190, 167, 146) colored shadow looks like.

```
.boxshadow{ -moz-box-shadow:4px 4px 4px  
4px rgb(190, 167, 146); -webkit-box-  
shadow:4px 4px 4px 4px rgb(190, 167, 146);  
box-shadow:4px 4px 4px 4px rgb(190, 167,  
146) }
```

Background

The CSS property to change the background color of an element to YUV 171.4830, -12.5631, 16.2394 is called "background". The background property can be set on classes, ids or directly on the HTML element.

```
.background, #background, body{  
background: rgb(190, 167, 146) }
```

If only the background color should be changed can be used:

```
.background{ background-color: rgb(190,  
167, 146) }
```

This example shows the color as background, it is applied via the CSS property "background".

To optimize and compress your CSS code, you can use our [online CSS compressor and optimizer](#) based on csstidy. If you want to create a linear or radial gradient as background or border, check our [CSS Gradient Generator](#).

Hey! You found this booklet interesting? Support Converting Colors with the new Membership Option!

The pro membership hides all ads, plus gives you double the colors in the color bucket, and more awesome pro features!

[Learn more, Memberships starting at \\$2.50/m!](#)

**Follow me
on Twitter!**

@ConvertingColor