

Converting Colors

YUV(171.6150, -16.0792,
24.0166)

Have a look what the booklet for
YUV(171.6150, -16.0792, 24.0166)
contains.

YUV(171.6150, -16.0792, 24.0166)	3
<i>Conversions</i>	4
<i>Details</i>	6
<i>Harmonies</i>	12
<i>Previews</i>	24
<i>Color Blindness Simulation</i>	28
<i>CSS Examples</i>	31

Color

**YUV(171.6150, -16.0792,
24.0166)**

Conversions

Conversions Part 1

Format	Color
Hex	C7A48B
RGB	199, 164, 139
RGB Percent	78%, 64%, 55%
CMY	0.2196, 0.3569, 0.4549
CMYK	0.00, 0.18, 0.30, 0.22
HSL	25°, 35%, 66%
HSV	25°, 30%, 78%
XYZ	41.4888, 40.5571, 30.0677
YIQ	171.6150, 28.8850, -0.3550

Conversions

Conversions Part 2

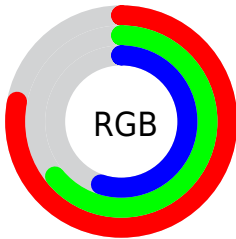
Format	Color
R _Y B	199, 182, 139
Decimal	13083787
CIE Lab	69.86, 9.18, 17.80
CIE LCh	70, 20.031, 62.719
Yxy	40.5571, 0.3701, 0.3617
Android (android.graphics.Color)	4291273867 (0xFFC7A48B)
YUV	171.6150, -16.0792, 24.0166
Hunter-Lab	63.6845, 4.8405, 16.5862

Details

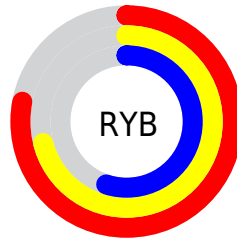
The YUV color $171.6150, -16.0792, 24.0166$ is a light color, and the websafe version is hex $CC9999$. A complement of this color would be $166.3850, 16.0792, -24.0166$, and the grayscale version is $172.0000, 0.0000, 0.0000$.

A 20% lighter version of the original color is $226.8000, -16.6634, 24.7314$, and $118.9460, -14.7634, 21.9724$ is the 20% darker color. If you saturate the color by 10%, you get $162.2910, -21.3425, 32.1938$, and if you desaturate by 10%, it is $180.9390, -10.8159, 15.8395$.

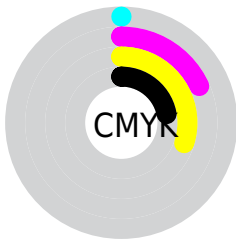
Distribution



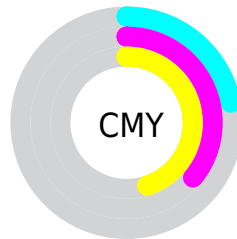
- Red (78%)
- Green (64%)
- Blue (55%)



- Red (78%)
- Yellow (71%)
- Blue (55%)



- Cyan (0%)
- Magenta (18%)
- Yellow (30%)
- Black (22%)



- Cyan (22%)
- Magenta (36%)
- Yellow (45%)

Brightness & Saturation Gradients

These gradients show how the YUV color 171.6150, -16.0792, 24.0166 changes by changing the brightness by 10 percent. The first figure shows a shift by +10% for each color and the second figure -10%.

Similar to the brightness gradients but the following saturation gradients show a change of the YUV color 171.6150, -16.0792, 24.0166 by changing the saturation by 10% instead.

■ 171.6150,
-16.0792, 24.0166

■ 171.6150,
-16.0792, 24.0166

255.0000, 0.0000,
0.0000

■ 145.0170,
-15.7844, 22.7871

■ 226.8000,
-16.6634, 24.7314

■ 118.9460,
-14.7634, 21.9724

■ 246.3140,
-12.9728, 7.6176

■ 94.3480, -14.4686,
20.7428

■ 254.3160, -2.6208,
0.5999

■ 69.9780, -13.3002,
19.3133

■ 47.4940, -12.5685,
17.9838

■ 26.3690, -12.9999,
16.3394

■ 5.9800, -2.9481,

12.2955

■ 0.0000, 0.0000,
0.0000

■ 171.6150,
-16.0792, 24.0166

■ 171.6150,
-16.0792, 24.0166

■ 162.2910,
-21.3425, 32.1938

■ 180.9390,
-10.8159, 15.8395

■ 153.5540,
-26.8951, 39.8561

■ 189.6760, -5.2633,
8.1771

■ 144.2300,
-32.1584, 48.0333

■ 199.0000, 0.0000,
0.0000

■ 135.4930,
-37.7110, 55.6956

■ 207.7370, 5.5527,
-7.6623

■ 126.1690,
-42.9743, 63.8728

■ 217.0610, 10.8159,
-15.8395

■ 116.9590,
-47.8008, 71.9500

■ 225.9290, 14.3320,
-23.6167

■ 108.2220,
-53.3534, 79.6123

■ 232.3860, 11.1487,
-29.2795

■ 238.2560, 8.2548,
-34.4275

Harmonies

Analogous

The Analogous color harmony consists of three colors that are next to each other on the color wheel.



172.8530, -10.2805, 30.8239



171.6150, -16.0792, 24.0166



169.8970, -17.2042, 11.4913

Triad

The Triadic color harmony groups three colors that are evenly spaced from another and form a triangle on the color wheel.



171.6150, -16.0792, 24.0166



163.5290, 4.1762, -32.9129



172.9800, 13.8139, 2.6485

Complementary

The Complementary color scheme is a pair of colors which are on the opposite of each other on the color wheel.



171.6150, -16.0792, 24.0166



166.3850, 16.0792, -24.0166

Split Complementary

Split-complementary colors differ from the complementary color scheme. The scheme consists of three colors, the original color and two neighbors of the complement color.



170.0100, 18.2361, -15.7948



171.6150, -16.0792, 24.0166



163.4990, 13.0650, -37.2716

Square

The Square scheme is like the rectangle color scheme, but the four colors are evenly spaced on the color wheel.



171.6150, -16.0792, 24.0166



165.6740, -5.7553, -20.7621



166.0960, 17.7007, -30.7792



173.9560, 6.9237, 19.3326

Rectangle

The Rectangle color scheme consists of four colors that form a rectangle on the color wheel.



171.6150, -16.0792, 24.0166



168.5860, -15.5719, 1.2401



166.0960, 17.7007, -30.7792



172.1040, 15.7247, -3.5992

Sweetspot

The Sweet Spot groups the original color and five complimentary colors.



171.6150, -16.0792, 24.0166



244.7470, -6.2843, 8.9919



160.9300, 6.4435, 33.3874



121.0070, -3.9475, 6.1329



0.0000, 0.0000, 0.0000



128.0000, 0.0000, 0.0000

Same Dimension

The Same Dimension uses a secret algorithm to generate beautiful new colors.



171.6150, -16.0792, 24.0166



212.8140, -24.5583, 36.9971



189.2250, -24.7609, 8.5727



95.0390, -2.4842, 3.4738



88.6530, -43.7059, 65.2023



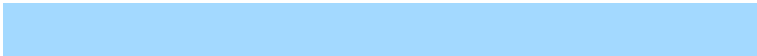
19.5690, -9.6475, 14.4100

Inverse Universe

The Inverse Universe completely reimagines the original color for something new.



166.3850, 16.0792, -24.0166



205.1860, 24.5583, -36.9971



148.7750, 24.7609, -8.5727



93.9610, 2.4842, -3.4738



74.3470, 43.7059, -65.2023



16.4310, 9.6475, -14.4100

Previews

White Background



This preview shows how the YUV color 171.6150, -16.0792, 24.0166 looks on a white background.

Color Contrast Check

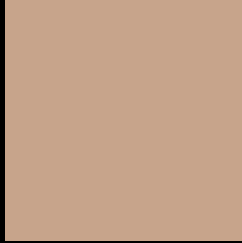
Large Text (above 18pt) WCAG AA × Fail

Any Text WCAG AA × Fail

Large Text (above 18pt) WCAG AAA × Fail

Any Text WCAG AAA × Fail

Black Background



This preview shows how the YUV color 171.6150, -16.0792, 24.0166 looks on a black background.

Color Contrast Check

Large Text (above 18pt) WCAG AA ✓ Pass

Any Text WCAG AA ✓ Pass

Large Text (above 18pt) WCAG AAA ✓ Pass

Any Text WCAG AAA ✓ Pass

If you want to check with other color combinations, try the [Color Contrast Checker](#).

YUV 171.6150, -16.0792, 24.0166

Background



This preview shows how black text looks on a background with the YUV color 171.6150, -16.0792, 24.0166.



This preview shows how white text looks on a background with the YUV color 171.6150, -16.0792, 24.0166.

Color Blindness Simulation

Color vision deficiency is a very complex topic, and I could not describe the different causes any better than Wikipedia does, so if you want to learn more, you should check out their [article about color blindness](#).

Dichromacy



Original Color

171.6150, -16.0792, 24.0166

Protanopia

170.3850, -13.9938, 8.4324

Deuteranopia

171.3160, -15.9318, 23.4019



Tritanopia

173.6380, -0.8075, 25.7505

Trichromacy



Original Color

171.6150, -16.0792, 24.0166

Protanomaly

170.6030, -14.5943, 14.3802

Deuteranomaly

171.3160, -15.9318, 23.4019

Tritanomaly

173.1450, -6.4805, 25.3058

Monochromacy



Original Color

171.6150, -16.0792, 24.0166

Achromatopsia

172.0000, 0.0000, 0.0000

Achromatomaly

171.8610, -5.8475, 8.8919

CSS Examples

Text

The CSS property to change the color of the text to YUV 171.6150, -16.0792, 24.0166 is called "color". The color property can be set on classes, ids or directly on the HTML element.

This example shows how text in the color `rgb(199, 164, 139)` looks like.

```
.text, #text, p{  
    color:rgb(199, 164, 139)  
}
```

If you want to add a text shadow in that color use the text-shadow property, you can generate a text shadow directly with our [CSS Text Shadow Generator](#).

Here you see how black text with a 4 pixel rgb(199, 164, 139) colored shadow looks like.

```
.shadow{ text-shadow: 4px 4px 2px rgb(199, 164, 139) }
```

Border

The CSS property to change the border of an element to YUV 171.6150, -16.0792, 24.0166 is called "border".

The border property can be set on classes, ids or directly on the HTML element.

This example shows the color as border, it can be applied via the CSS property "border" or "border-color".

```
.border, #border, table{ border:4px solid rgb(199, 164, 139) }
```


If only the border color should be changed use the property `border-color`.

```
.border{ border-color:rgb(199, 164, 139) }
```

If you want to add a box shadow in that color use:

Here you see how a box with a 4 pixel `rgb(199, 164, 139)` colored shadow looks like.

```
.boxshadow{ -moz-box-shadow:4px 4px 4px  
4px rgb(199, 164, 139); -webkit-box-  
shadow:4px 4px 4px 4px rgb(199, 164, 139);  
box-shadow:4px 4px 4px 4px rgb(199, 164,  
139) }
```

Background

The CSS property to change the background color of an element to YUV 171.6150, -16.0792, 24.0166 is called "background". The background property can be set on classes, ids or directly on the HTML element.

```
.background, #background, body{  
background: rgb(199, 164, 139) }
```

If only the background color should be changed can be used:

```
.background{ background-color: rgb(199,  
164, 139) }
```

This example shows the color as background, it is applied via the CSS property "background".

To optimize and compress your CSS code, you can use our [online CSS compressor and optimizer](#) based on csstidy. If you want to create a linear or radial gradient as background or border, check our [CSS Gradient Generator](#).

Hey! You found this booklet interesting? Support Converting Colors with the new Membership Option!

The pro membership hides all ads, plus gives you double the colors in the color bucket, and more awesome pro features!

[Learn more, Memberships starting at \\$2.50/m!](#)

**Follow me
on Twitter!**

@ConvertingColor