

# Converting Colors

YUV(171.7600, -2.3467,  
52.8305)

Have a look what the booklet for  
YUV(171.7600, -2.3467, 52.8305)  
contains.

<b>YUV(171.7600, -2.3467, 52.8305)</b> .....	3
<b><i>Conversions</i></b> .....	4
<b><i>Details</i></b> .....	6
<b><i>Harmonies</i></b> .....	12
<b><i>Previews</i></b> .....	24
<b><i>Color Blindness Simulation</i></b> .....	28
<b><i>CSS Examples</i></b> .....	31

# Color

**YUV(171.7600, -2.3467,  
52.8305)**

# Conversions

## Conversions Part 1

Format	Color
Hex	E88EA7
RGB	232, 142, 167
RGB Percent	91%, 56%, 65%
CMY	0.0902, 0.4431, 0.3451
CMYK	0.00, 0.39, 0.28, 0.09
HSL	343°, 66%, 73%
HSV	343°, 39%, 91%
XYZ	49.9268, 39.2918, 41.5119
YIQ	171.7600, 45.6150, 26.8550

# Conversions

## Conversions Part 2

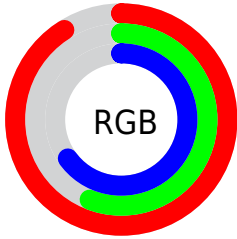
<b>Format</b>	<b>Color</b>
<b>R<sub>YB</sub></b>	232, 142, 167
Decimal	15240871
CIE <sub>Lab</sub>	68.96, 37.21, 1.46
CIE <sub>LCh</sub>	69, 37.243, 2.253
Yxy	39.2918, 0.3819, 0.3006
Android (android.graphics.Color)	4293430951 (0xFFE88EA7)
YUV	171.7600, -2.3467, 52.8305
Hunter-Lab	62.6832, 32.4785, 4.6135

# Details

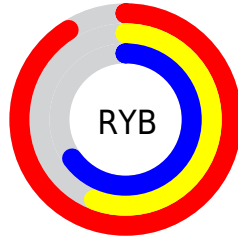
The YUV color  $171.7600, -2.3467, 52.8305$  is a light color, and the websafe version is hex  $FF99CC$ . A complement of this color would be  $202.2400, 2.3467, -52.8305$ , and the grayscale version is  $172.0000, 0.0000, 0.0000$ .

A 20% lighter version of the original color is  $217.1920, 2.3703, 33.1576$ , and  $117.9660, -1.4622, 49.1418$  is the 20% darker color. If you saturate the color by 10%, you get  $156.3210, -3.1163, 66.3705$ , and if you desaturate by 10%, it is  $187.1990, -1.5771, 39.2905$ .

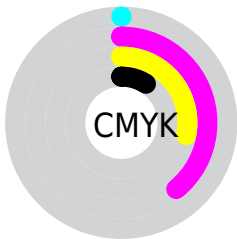
# Distribution



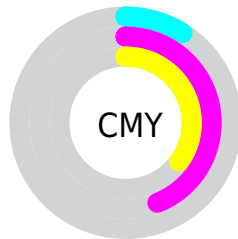
- Red (91%)
- Green (56%)
- Blue (65%)



- Red (91%)
- Yellow (56%)
- Blue (65%)



- Cyan (0%)
- Magenta (39%)
- Yellow (28%)
- Black (9%)



- Cyan (9%)
- Magenta (44%)
- Yellow (35%)

# Brightness & Saturation Gradients

These gradients show how the YUV color 171.7600, -2.3467, 52.8305 changes by changing the brightness by 10 percent. The first figure shows a shift by +10% for each color and the second figure -10%.

Similar to the brightness gradients but the following saturation gradients show a change of the YUV color 171.7600, -2.3467, 52.8305 by changing the saturation by 10% instead.




 171.7600, -2.3467,  
52.8305

 171.7600, -2.3467,  
52.8305


255.0000, 0.0000,  
0.0000

 144.8630, -1.9045,  
50.9861

 217.1920, 2.3703,  
33.1576


 117.9660, -1.4622,  
49.1418

 236.9340, 6.9345,  
15.8439

 92.1830, -0.5832,  
47.1975

254.4130, 0.2894,  
0.5148

 66.6990, 0.1484,  
45.8680

 39.6820, 2.6218,  
45.8829

 22.5840, 1.1911,  
38.0758

 13.5690, -6.1965,

27.5650

0.0000, 0.0000,  
0.0000

171.7600, -2.3467,  
52.8305

171.7600, -2.3467,  
52.8305

156.3210, -3.1163,  
66.3705

187.1990, -1.5771,  
39.2905

140.8820, -3.8858,  
79.9105

202.6380, -0.8075,  
25.7505

124.9700, -3.9292,  
93.8653

218.5500, -0.7641,  
11.7957

109.5310, -4.6988,  
107.4053

233.9890, 0.0054,  
-1.7444

94.0920, -5.4684,  
120.9453

247.6670, 1.6432,  
-13.7400

■ 78.6530, -6.2379,  
134.4853

■ 248.1230, 3.3904,  
-14.1399

■ 76.6640, -6.2434,  
136.2297

# Harmonies

## Analogous

The Analogous color harmony consists of three colors that are next to each other on the color wheel.



172.7760, 13.4214, 35.2764



171.7600, -2.3467, 52.8305



169.7590, -17.6292, 54.5854

# Triad

The Triadic color harmony groups three colors that are evenly spaced from another and form a triangle on the color wheel.



171.7600, -2.3467, 52.8305



162.1860, -25.7277, -8.0561



150.3750, 37.7761, -76.6279

# Complementary

The Complementary color scheme is a pair of colors which are on the opposite of each other on the color wheel.



171.7600, -2.3467, 52.8305



202.2400, 2.3467, -52.8305

# Split Complementary

Split-complementary colors differ from the complementary color scheme. The scheme consists of three colors, the original color and two neighbors of the complement color.



138.0160, 32.0371, -102.6230



171.7600, -2.3467, 52.8305



157.0000, -10.3530, -39.4650

# Square

The Square scheme is like the rectangle color scheme, but the four colors are evenly spaced on the color wheel.



171.7600, -2.3467, 52.8305



165.6410, -32.3610, 19.6088



148.2960, 10.7001, -72.1736



164.2430, 34.8832, -35.2931



# Rectangle

The Rectangle color scheme consists of four colors that form a rectangle on the color wheel.



171.7600, -2.3467, 52.8305



169.1250, -26.1906, 47.2484



148.2960, 10.7001, -72.1736



144.8850, 37.5247, -89.3531

# Sweetspot

The Sweet Spot groups the original color and five complimentary colors.



171.7600, -2.3467, 52.8305



234.2950, -0.6384, 18.1583



171.6950, 29.7304, 30.9625



115.9520, -0.4693, 10.5661



0.0000, 0.0000, 0.0000



128.0000, 0.0000, 0.0000



# Same Dimension

The Same Dimension uses a secret algorithm to generate beautiful new colors.



171.7600, -2.3467, 52.8305



174.6420, -3.2745, 70.4740



180.6500, -19.0544, 45.0340



106.9300, -0.4585, 7.0774



59.2210, -4.5460, 105.0462



16.8450, -1.4026, 29.9539



# Inverse Universe

The Inverse Universe completely reimagines the original color for something new.



171.7600, -2.3467, 52.8305



174.6420, -3.2745, 70.4740



193.3500, 19.0545, -45.0339



106.9300, -0.4585, 7.0774



59.2210, -4.5460, 105.0462



16.8450, -1.4026, 29.9539



# Previews

## White Background



This preview shows how the YUV color 171.7600, -2.3467, 52.8305 looks on a white background.

## Color Contrast Check

Large Text (above 18pt) WCAG AA × Fail

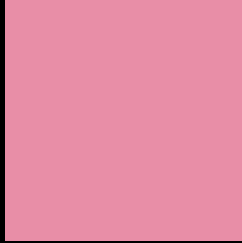
Any Text WCAG AA × Fail

Large Text (above 18pt) WCAG AAA × Fail

Any Text WCAG AAA × Fail



# Black Background



This preview shows how the YUV color 171.7600, -2.3467, 52.8305 looks on a black background.

## Color Contrast Check

Large Text (above 18pt) WCAG AA ✓ Pass

Any Text WCAG AA ✓ Pass

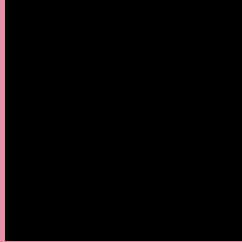
Large Text (above 18pt) WCAG AAA ✓ Pass

Any Text WCAG AAA ✓ Pass

If you want to check with other color combinations, try the [Color Contrast Checker](#).

# YUV 171.7600, -2.3467, 52.8305

## Background



This preview shows how black text looks on a background with the YUV color 171.7600, -2.3467, 52.8305.



This preview shows how white text looks on a background with the YUV color 171.7600, -2.3467,



# Color Blindness Simulation

Color vision deficiency is a very complex topic, and I could not describe the different causes any better than Wikipedia does, so if you want to learn more, you should check out their [article about color blindness](#).

## Dichromacy



### Original Color

171.7600, -2.3467, 52.8305

### Protanopia

169.5960, 6.1152, -1.3997

### Deuteranopia

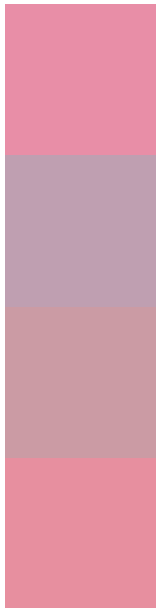
170.1760, -3.5378, 14.7546



## Tritanopia

171.2670, -8.0196, 52.3858

# Trichromacy



## Original Color

171.7600, -2.3467, 52.8305

## Protanomaly

170.6200, 3.1453, 17.8733

## Deuteranomaly

170.3780, -3.1444, 28.6095

## Tritanomaly

171.1360, -5.9830, 52.5007

# Monochromacy



## Original Color

171.7600, -2.3467, 52.8305

## Achromatopsia

172.0000, 0.0000, 0.0000

## Achromatomaly

171.8930, -0.9332, 19.3878

# CSS Examples

## Text

The CSS property to change the color of the text to YUV 171.7600, -2.3467, 52.8305 is called "color". The color property can be set on classes, ids or directly on the HTML element.

This example shows how text in the color `rgb(232, 142, 167)` looks like.

```
.text, #text, p{  
    color:rgb(232, 142, 167)  
}
```

If you want to add a text shadow in that color use the text-shadow property, you can generate a text shadow directly with our [CSS Text Shadow Generator](#).

Here you see how black text with a 4 pixel rgb(232, 142, 167) colored shadow looks like.

```
.shadow{ text-shadow: 4px 4px 2px rgb(232, 142, 167) }
```

## Border

The CSS property to change the border of an element to YUV 171.7600, -2.3467, 52.8305 is called "border". The border property can be set on classes, ids or directly on the HTML element.

This example shows the color as border, it can be applied via the CSS property "border" or "border-color".

```
.border, #border, table{ border:4px solid rgb(232, 142, 167) }
```



If only the border color should be changed use the property border-color.

```
.border{ border-color:rgb(232, 142, 167) }
```

If you want to add a box shadow in that color use:

Here you see how a box with a 4 pixel rgb(232, 142, 167) colored shadow looks like.

```
.boxshadow{ -moz-box-shadow:4px 4px 4px  
4px rgb(232, 142, 167); -webkit-box-  
shadow:4px 4px 4px 4px rgb(232, 142, 167);  
box-shadow:4px 4px 4px 4px rgb(232, 142,  
167) }
```

# Background

The CSS property to change the background color of an element to YUV 171.7600, -2.3467, 52.8305 is called "background". The background property can be set on classes, ids or directly on the HTML element.

```
.background, #background, body{  
background: rgb(232, 142, 167) }
```

If only the background color should be changed can be used:

```
.background{ background-color: rgb(232,  
142, 167) }
```

This example shows the color as background, it is applied via the CSS property "background".

To optimize and compress your CSS code, you can use our [online CSS compressor and optimizer](#) based on csstidy. If you want to create a linear or radial gradient as background or border, check our [CSS Gradient Generator](#).

Hey! You found this booklet interesting? Support Converting Colors with the new Membership Option!

The pro membership hides all ads, plus gives you double the colors in the color bucket, and more awesome pro features!

**[Learn more, Memberships starting at \\$2.50/m!](#)**

**Follow me  
on Twitter!**

@ConvertingColor