

Converting Colors

YUV(171.7910, -2.8550,
29.1243)

Have a look what the booklet for
YUV(171.7910, -2.8550, 29.1243)
contains.

YUV(171.7910, -2.8550, 29.1243)	3
<i>Conversions</i>	4
<i>Details</i>	6
<i>Harmonies</i>	12
<i>Previews</i>	24
<i>Color Blindness Simulation</i>	28
<i>CSS Examples</i>	31

Color

**YUV(171.7910, -2.8550,
29.1243)**

Conversions

Conversions Part 1

Format	Color
Hex	CD9CA6
RGB	205, 156, 166
RGB Percent	80%, 61%, 65%
CMY	0.1961, 0.3882, 0.3490
CMYK	0.00, 0.24, 0.19, 0.20
HSL	348°, 33%, 71%
HSV	348°, 24%, 80%
XYZ	43.9482, 39.5092, 41.3861
YIQ	171.7910, 25.9940, 13.4980

Conversions

Conversions Part 2

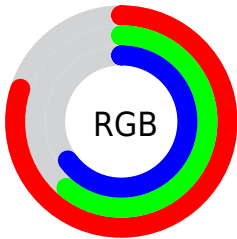
Format	Color
R _Y B	205, 156, 166
Decimal	13474982
CIE Lab	69.12, 19.75, 1.88
CIE LCh	69, 19.837, 5.440
Yxy	39.5092, 0.3520, 0.3165
Android (android.graphics.Color)	4291665062 (0xFFCD9CA6)
YUV	171.7910, -2.8550, 29.1243
Hunter-Lab	62.8564, 14.8059, 4.9615

Details

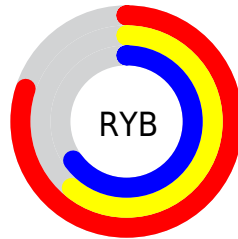
The YUV color $171.7910, -2.8550, 29.1243$ is a light color, and the websafe version is hex $CC9999$. A complement of this color would be $189.2090, 2.8550, -29.1243$, and the grayscale version is $172.0000, 0.0000, 0.0000$.

A 20% lighter version of the original color is $225.2960, -2.1179, 26.0504$, and $118.8940, -2.4127, 27.2800$ is the 20% darker color. If you saturate the color by 10%, you get $158.2270, -4.0559, 41.0199$, and if you desaturate by 10%, it is $185.9420, -1.9434, 16.7139$.

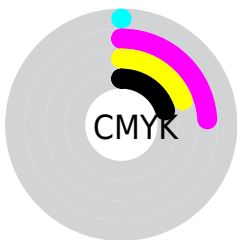
Distribution



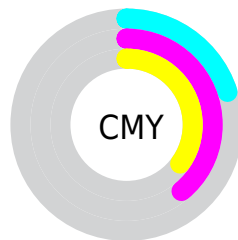
- Red (80%)
- Green (61%)
- Blue (65%)



- Red (80%)
- Yellow (61%)
- Blue (65%)



- Cyan (0%)
- Magenta (24%)
- Yellow (19%)
- Black (20%)



- Cyan (20%)
- Magenta (39%)
- Yellow (35%)

Brightness & Saturation Gradients

These gradients show how the YUV color 171.7910, -2.8550, 29.1243 changes by changing the brightness by 10 percent. The first figure shows a shift by +10% for each color and the second figure -10%.

Similar to the brightness gradients but the following saturation gradients show a change of the YUV color 171.7910, -2.8550, 29.1243 by changing the saturation by 10% instead.

■ 171.7910, -2.8550,
29.1243

■ 171.7910, -2.8550,
29.1243

■ 255.0000, 0.0000,
0.0000

■ 145.1930, -2.5601,
27.8947

■ 225.2960, -2.1179,
26.0504

■ 118.8940, -2.4127,
27.2800

■ 245.0380, 2.4463,
8.7367

■ 94.2960, -2.1179,
26.0504

■ 70.2850, -2.1125,
24.3061

■ 46.8010, -1.3809,
22.9765

■ 25.0180, -0.5019,
21.0322

■ 8.7850, -3.8380,

17.7286

■ 0.0000, 0.0000,
0.0000

■ 171.7910, -2.8550,
29.1243

■ 171.7910, -2.8550,
29.1243

■ 158.2270, -4.0559,
41.0199

■ 185.9420, -1.9434,
16.7139

■ 143.9620, -5.4043,
53.5303

■ 199.6200, -0.3057,
4.7183

■ 130.3980, -6.6052,
65.4260

■ 213.7710, 0.6059,
-7.6922

■ 116.2470, -7.5168,
77.8364

■ 227.3350, 1.8068,
-19.5878

■ 102.5690, -9.1545,
89.8320

■ 239.2520, 4.3128,
-30.0390

■ 88.4180, -10.0661,
102.2424

■ 240.0500, 7.3704,
-30.7388

■ 74.2670, -10.9776,
114.6528

■ 66.0830, -11.8729,
121.8302

Harmonies

Analogous

The Analogous color harmony consists of three colors that are next to each other on the color wheel.



172.0270, 5.9027, 20.1473



171.7910, -2.8550, 29.1243



171.0270, -10.8593, 29.7943

Triad

The Triadic color harmony groups three colors that are evenly spaced from another and form a triangle on the color wheel.



171.7910, -2.8550, 29.1243



165.5250, -13.0768, -5.7224



164.8080, 17.8427, -29.6496

Complementary

The Complementary color scheme is a pair of colors which are on the opposite of each other on the color wheel.



171.7910, -2.8550, 29.1243



189.2090, 2.8550, -29.1243

Split Complementary

Split-complementary colors differ from the complementary color scheme. The scheme consists of three colors, the original color and two neighbors of the complement color.



161.9120, 13.3544, -36.7568



171.7910, -2.8550, 29.1243



163.4890, -5.1711, -21.4769

Square

The Square scheme is like the rectangle color scheme, but the four colors are evenly spaced on the color wheel.



171.7910, -2.8550, 29.1243



167.8860, -17.1988, 9.7470



161.6430, 4.6130, -33.0129



167.9070, 17.7938, -13.9504

Rectangle

The Rectangle color scheme consists of four colors that form a rectangle on the color wheel.



171.7910, -2.8550, 29.1243



170.2670, -14.9216, 26.0758



161.6430, 4.6130, -33.0129



163.2590, 17.1273, -33.5531

Sweetspot

The Sweet Spot groups the original color and five complimentary colors.



171.7910, -2.8550, 29.1243



242.8380, -0.9061, 10.6661



172.9480, 15.8016, 18.4626



120.5170, -0.7479, 6.5626



0.0000, 0.0000, 0.0000



128.0000, 0.0000, 0.0000

Same Dimension

The Same Dimension uses a secret algorithm to generate beautiful new colors.



171.7910, -2.8550, 29.1243



204.8360, -4.3561, 43.9938



178.8690, -11.2744, 22.9169



95.2180, -0.6005, 5.9478



53.5100, -9.6184, 98.6537



12.2740, -2.1071, 22.5617

Inverse Universe

The Inverse Universe completely reimagines the original color for something new.



171.7910, -2.8550, 29.1243



204.8360, -4.3561, 43.9938



182.1310, 11.2744, -22.9169



95.2180, -0.6005, 5.9478



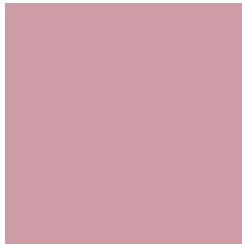
53.5100, -9.6184, 98.6537



12.2740, -2.1071, 22.5617

Previews

White Background



This preview shows how the YUV color 171.7910, -2.8550, 29.1243 looks on a white background.

Color Contrast Check

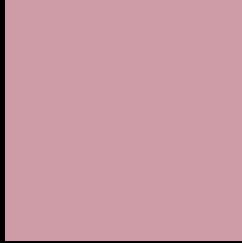
Large Text (above 18pt) WCAG AA × Fail

Any Text WCAG AA × Fail

Large Text (above 18pt) WCAG AAA × Fail

Any Text WCAG AAA × Fail

Black Background



This preview shows how the YUV color 171.7910, -2.8550, 29.1243 looks on a black background.

Color Contrast Check

Large Text (above 18pt) WCAG AA ✓ Pass

Any Text WCAG AA ✓ Pass

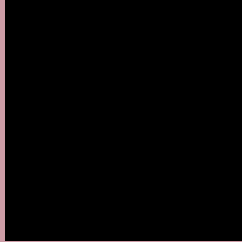
Large Text (above 18pt) WCAG AAA ✓ Pass

Any Text WCAG AAA ✓ Pass

If you want to check with other color combinations, try the [Color Contrast Checker](#).

YUV 171.7910, -2.8550, 29.1243

Background



This preview shows how black text looks on a background with the YUV color 171.7910, -2.8550, 29.1243.



This preview shows how white text looks on a background with the YUV color 171.7910, -2.8550,

Color Blindness Simulation

Color vision deficiency is a very complex topic, and I could not describe the different causes any better than Wikipedia does, so if you want to learn more, you should check out their [article about color blindness](#).

Dichromacy



Original Color

171.7910, -2.8550, 29.1243

Protanopia

169.4670, 1.7418, 1.3444

Deuteranopia

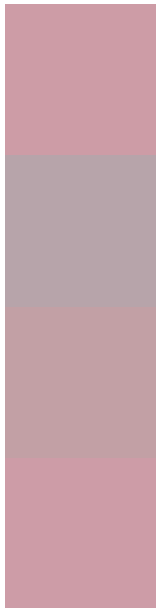
170.4040, -2.6642, 14.5547



Tritanopia

172.0190, -1.9814, 28.9243

Trichromacy



Original Color

171.7910, -2.8550, 29.1243

Protanomaly

170.3650, -0.1799, 11.0809

Deuteranomaly

170.7360, -2.8278, 20.4025

Tritanomaly

171.9050, -2.4182, 29.0243

Monochromacy



Original Color

171.7910, -2.8550, 29.1243

Achromatopsia

172.0000, 0.0000, 0.0000

Achromatomaly

171.8380, -0.9061, 10.6661

CSS Examples

Text

The CSS property to change the color of the text to YUV 171.7910, -2.8550, 29.1243 is called "color". The color property can be set on classes, ids or directly on the HTML element.

This example shows how text in the color `rgb(205, 156, 166)` looks like.

```
.text, #text, p{  
    color:rgb(205, 156, 166)  
}
```

If you want to add a text shadow in that color use the text-shadow property, you can generate a text shadow directly with our [CSS Text Shadow Generator](#).

Here you see how black text with a 4 pixel rgb(205, 156, 166) colored shadow looks like.

```
.shadow{ text-shadow: 4px 4px 2px rgb(205, 156, 166) }
```

Border

The CSS property to change the border of an element to YUV 171.7910, -2.8550, 29.1243 is called "border". The border property can be set on classes, ids or directly on the HTML element.

This example shows the color as border, it can be applied via the CSS property "border" or "border-color".

```
.border, #border, table{ border:4px solid rgb(205, 156, 166) }
```


If only the border color should be changed use the property `border-color`.

```
.border{ border-color:rgb(205, 156, 166) }
```

If you want to add a box shadow in that color use:

Here you see how a box with a 4 pixel `rgb(205, 156, 166)` colored shadow looks like.

```
.boxshadow{ -moz-box-shadow:4px 4px 4px  
4px rgb(205, 156, 166); -webkit-box-  
shadow:4px 4px 4px 4px rgb(205, 156, 166);  
box-shadow:4px 4px 4px 4px rgb(205, 156,  
166) }
```

Background

The CSS property to change the background color of an element to YUV 171.7910, -2.8550, 29.1243 is called "background". The background property can be set on classes, ids or directly on the HTML element.

```
.background, #background, body{  
background: rgb(205, 156, 166) }
```

If only the background color should be changed can be used:

```
.background{ background-color: rgb(205,  
156, 166) }
```

This example shows the color as background, it is applied via the CSS property "background".

To optimize and compress your CSS code, you can use our [online CSS compressor and optimizer](#) based on csstidy. If you want to create a linear or radial gradient as background or border, check our [CSS Gradient Generator](#).

Hey! You found this booklet interesting? Support Converting Colors with the new Membership Option!

The pro membership hides all ads, plus gives you double the colors in the color bucket, and more awesome pro features!

[Learn more, Memberships starting at \\$2.50/m!](#)

**Follow me
on Twitter!**

@ConvertingColor