

Converting Colors

YUV(171.9520, 1.9957,
-127.1229)

Have a look what the booklet for
YUV(171.9520, 1.9957, -127.1229)
contains.

YUV(171.9520, 1.9957, -127.1229)	3
<i>Conversions</i>	4
<i>Details</i>	6
<i>Harmonies</i>	12
<i>Previews</i>	24
<i>Color Blindness Simulation</i>	28
<i>CSS Examples</i>	31

Color

**YUV(171.9520, 1.9957,
-127.1229)**

Conversions

Conversions Part 1

Format	Color
Hex	1BF5B0
RGB	27, 245, 176
RGB Percent	11%, 96%, 69%
CMY	0.8941, 0.0392, 0.3098
CMYK	0.89, 0.00, 0.28, 0.04
HSL	161°, 92%, 53%
HSV	161°, 89%, 96%
XYZ	40.9409, 68.6724, 52.1716
YIQ	171.9520, -107.7790, -67.6750

Conversions

Conversions Part 2

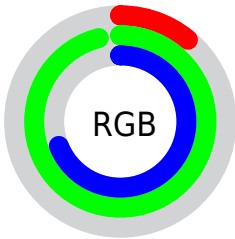
Format	Color
R_{YB}	27, 156, 245
Decimal	1832368
CIE _{Lab}	86.34, -63.52, 19.95
CIE _{LCh}	86, 66.577, 162.565
Yxy	68.6724, 0.2531, 0.4245
Android (android.graphics.Color)	4280022448 (0xFF1BF5B0)
YUV	171.9520, 1.9957, -127.1229
Hunter-Lab	82.8688, -56.8335, 20.6811

Details

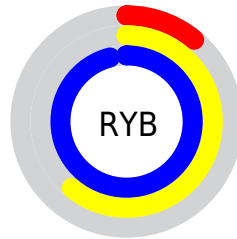
The YUV color **171.9520, 1.9957, -127.1229** is a light color, and the websafe version is hex **00FFCC**. The color can be described as light washed spring green. A complement of this color would be **100.0480, -1.9957, 127.1229**, and the grayscale version is **172.0000, 0.0000, 0.0000**.

A 20% lighter version of the original color is **211.4150, 10.1484, -81.9250**, and **123.7910, -0.3900, -108.5647** is the 20% darker color. If you saturate the color by 10%, you get **163.5650, 2.1865, -141.6925**, and if you desaturate by 10%, it is **180.0400, 1.9523, -113.1681**.

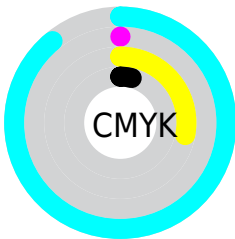
Distribution



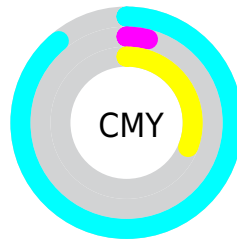
- Red (11%)
- Green (96%)
- Blue (69%)



- Red (11%)
- Yellow (61%)
- Blue (96%)



- Cyan (89%)
- Magenta (0%)
- Yellow (28%)
- Black (4%)



- Cyan (89%)
- Magenta (4%)
- Yellow (31%)

Brightness & Saturation Gradients

These gradients show how the YUV color 171.9520, 1.9957, -127.1229 changes by changing the brightness by 10 percent. The first figure shows a shift by +10% for each color and the second figure -10%.

Similar to the brightness gradients but the following saturation gradients show a change of the YUV color 171.9520, 1.9957, -127.1229 by changing the saturation by 10% instead.

171.9520, 1.9957,
-127.1229

171.9520, 1.9957,
-127.1229

255.0000, 0.0000,
0.0000

143.7780, 2.5744,
-126.0933

211.4150, 10.1484,
-81.9250

123.7910, -0.3900,
-108.5647

224.2030, 15.1829,
-63.3220

104.5050, -3.2070,
-91.6509

233.7710, 10.4659,
-43.6492

85.9200, -5.8766,
-75.3518

243.3390, 5.7489,
-23.9763

68.0360, -8.3987,
-59.6676

252.9070, 1.0318,
-4.3034

50.2660, -10.4841,
-44.0833

33.5560, -13.5851,

-29.4286

■ 17.6100, -8.6817,
-15.4440

■ 0.0000, 0.0000,
0.0000

■ 171.9520, 1.9957,
-127.1229

■ 171.9520, 1.9957,
-127.1229

■ 163.5650, 2.1865,
-141.6925

■ 180.0400, 1.9523,
-113.1681

■ 162.8530, 2.0445,
-142.8221

■ 188.4270, 1.7615,
-98.5985

■ 196.4010, 1.2813,
-84.5437

■ 204.7880, 1.0905,
-69.9741

■ 213.1750, 0.8997,
-55.4045

■ 221.2630, 0.8563,
-41.4497

■ 229.5360, 0.2288,
-26.7801

■ 237.6240, 0.1854,
-12.8252

■ 245.7120, 0.1420,
1.1296

Harmonies

Analogous

The Analogous color harmony consists of three colors that are next to each other on the color wheel.



199.0410, -39.4602, -36.8700



171.9520, 1.9957, -127.1229



173.1640, 33.9361, -151.8648

Triad

The Triadic color harmony groups three colors that are evenly spaced from another and form a triangle on the color wheel.



171.9520, 1.9957, -127.1229



200.4350, 26.9005, -41.6005



194.7190, -30.4275, 52.8664

Complementary

The Complementary color scheme is a pair of colors which are on the opposite of each other on the color wheel.



171.9520, 1.9957, -127.1229



100.0480, -1.9957, 127.1229

Split Complementary

Split-complementary colors differ from the complementary color scheme. The scheme consists of three colors, the original color and two neighbors of the complement color.



192.6400, -0.3155, 54.6897



171.9520, 1.9957, -127.1229



216.2580, 19.0998, 33.9767

Square

The Square scheme is like the rectangle color scheme, but the four colors are evenly spaced on the color wheel.



171.9520, 1.9957, -127.1229



165.8410, 43.9554, -145.4426



203.3440, 25.4664, 45.3023



203.6600, -54.5554, 45.0252

Rectangle

The Rectangle color scheme consists of four colors that form a rectangle on the color wheel.



171.9520, 1.9957, -127.1229



173.4720, 40.1933, -152.1349



203.3440, 25.4664, 45.3023



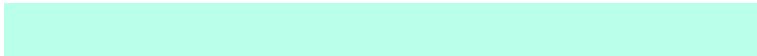
192.7760, -20.1026, 54.5704

Sweetspot

The Sweet Spot groups the original color and five complimentary colors.



171.9520, 1.9957, -127.1229



231.8610, 0.5615, -40.2201



175.5970, -73.2583, -69.8066



114.2590, 0.3653, -23.9061



0.0000, 0.0000, 0.0000



128.0000, 0.0000, 0.0000

Same Dimension

The Same Dimension uses a secret algorithm to generate beautiful new colors.



171.9520, 1.9957, -127.1229



169.5210, 2.2081, -148.6699



156.3380, 43.7104, -113.4294



118.0700, 0.4585, -7.0774



123.6600, 1.6466, -108.4498



39.1930, 0.3979, -34.3723

Inverse Universe

The Inverse Universe completely reimagines the original color for something new.



100.0480, -1.9957, 127.1229



85.4790, -2.2081, 148.6699



115.6620, -43.7104, 113.4294



114.0440, -0.0217, 6.9774



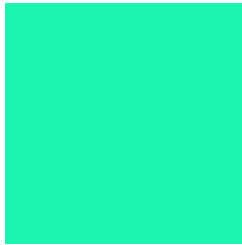
62.3400, -1.6466, 108.4498



19.8070, -0.3979, 34.3723

Previews

White Background



This preview shows how the YUV color 171.9520, 1.9957, -127.1229 looks on a white background.

Color Contrast Check

Large Text (above 18pt) WCAG AA × Fail

Any Text WCAG AA × Fail

Large Text (above 18pt) WCAG AAA × Fail

Any Text WCAG AAA × Fail

Black Background



This preview shows how the YUV color 171.9520, 1.9957, -127.1229 looks on a black background.

Color Contrast Check

Large Text (above 18pt) WCAG AA ✓ Pass

Any Text WCAG AA ✓ Pass

Large Text (above 18pt) WCAG AAA ✓ Pass

Any Text WCAG AAA ✓ Pass

If you want to check with other color combinations, try the [Color Contrast Checker](#).

YUV 171.9520, 1.9957, -127.1229

Background



This preview shows how black text looks on a background with the YUV color 171.9520, 1.9957, -127.1229.



This preview shows how white text looks on a background with the YUV color 171.9520, 1.9957, -127.1229.

Color Blindness Simulation

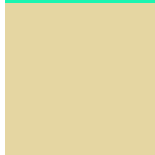
Color vision deficiency is a very complex topic, and I could not describe the different causes any better than Wikipedia does, so if you want to learn more, you should check out their [article about color blindness](#).

Dichromacy



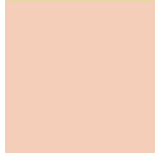
Original Color

171.9520, 1.9957, -127.1229



Protanopia

212.5570, -24.9246, 14.4205



Deuteranopia

215.2670, -14.9216, 26.0758



Tritanopia

192.0170, 30.5576, -94.7309

Trichromacy



Original Color

171.9520, 1.9957, -127.1229



Protanomaly

197.7570, -15.1632, -36.6209



Deuteranomaly

199.5220, -8.6383, -29.3988



Tritanomaly

184.8940, 20.2653, -106.9010

Monochromacy



Original Color

171.9520, 1.9957, -127.1229



Achromatopsia

172.0000, 0.0000, 0.0000



Achromatomaly

172.1160, 0.4358, -46.5827

CSS Examples

Text

The CSS property to change the color of the text to YUV 171.9520, 1.9957, -127.1229 is called "color". The color property can be set on classes, ids or directly on the HTML element.

This example shows how text in the color `rgb(27, 245, 176)` looks like.

```
.text, #text, p{  
    color:rgb(27, 245, 176)  
}
```

If you want to add a text shadow in that color use the text-shadow property, you can generate a text shadow directly with our [CSS Text Shadow Generator](#).

Here you see how black text with a 4 pixel rgb(27, 245, 176) colored shadow looks like.

```
.shadow{ text-shadow: 4px 4px 2px rgb(27, 245, 176) }
```

Border

The CSS property to change the border of an element to YUV 171.9520, 1.9957, -127.1229 is called "border".

The border property can be set on classes, ids or directly on the HTML element.

This example shows the color as border, it can be applied via the CSS property "border" or "border-color".

```
.border, #border, table{ border:4px solid rgb(27, 245, 176) }
```


If only the border color should be changed use the property `border-color`.

```
.border{ border-color:rgb(27, 245, 176) }
```

If you want to add a box shadow in that color use:

Here you see how a box with a 4 pixel `rgb(27, 245, 176)` colored shadow looks like.

```
.boxshadow{ -moz-box-shadow:4px 4px 4px  
4px rgb(27, 245, 176); -webkit-box-  
shadow:4px 4px 4px 4px rgb(27, 245, 176);  
box-shadow:4px 4px 4px 4px rgb(27, 245,  
176) }
```

Background

The CSS property to change the background color of an element to YUV 171.9520, 1.9957, -127.1229 is called "background". The background property can be set on classes, ids or directly on the HTML element.

```
.background, #background, body{  
background: rgb(27, 245, 176) }
```

If only the background color should be changed can be used:

```
.background{ background-color: rgb(27, 245,  
176) }
```

This example shows the color as background, it is applied via the CSS property "background".

To optimize and compress your CSS code, you can use our [online CSS compressor and optimizer](#) based on csstidy. If you want to create a linear or radial gradient as background or border, check our [CSS Gradient Generator](#).

Hey! You found this booklet interesting? Support Converting Colors with the new Membership Option!

The pro membership hides all ads, plus gives you double the colors in the color bucket, and more awesome pro features!

[Learn more, Memberships starting at \\$2.50/m!](#)

**Follow me
on Twitter!**

@ConvertingColor