

Converting Colors

YUV(171.9600, -5.8963,
24.5911)

Have a look what the booklet for
YUV(171.9600, -5.8963, 24.5911)
contains.

YUV(171.9600, -5.8963, 24.5911)	3
<i>Conversions</i>	4
<i>Details</i>	6
<i>Harmonies</i>	12
<i>Previews</i>	24
<i>Color Blindness Simulation</i>	28
<i>CSS Examples</i>	31

Color

**YUV(171.9600, -5.8963,
24.5911)**

Conversions

Conversions Part 1

Format	Color
Hex	C8A0A0
RGB	200, 160, 160
RGB Percent	78%, 63%, 63%
CMY	0.2157, 0.3725, 0.3725
CMYK	0.00, 0.20, 0.20, 0.22
HSL	0°, 27%, 71%
HSV	0°, 20%, 78%
XYZ	42.7354, 39.9590, 38.7182
YIQ	171.9600, 23.8400, 8.4800

Conversions

Conversions Part 2

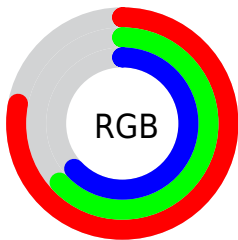
Format	Color
R_{YB}	200, 160, 160
Decimal	13148320
CIE _{Lab}	69.44, 14.77, 5.62
CIE _{LCh}	69, 15.803, 20.824
Yxy	39.9590, 0.3520, 0.3291
Android (android.graphics.Color)	4291338400 (0xFFC8A0A0)
YUV	171.9600, -5.8963, 24.5911
Hunter-Lab	63.2132, 10.0523, 7.9340

Details

The YUV color $171.9600, -5.8963, 24.5911$ is a light color, and the websafe version is hex $CC9999$. A complement of this color would be $188.0400, 5.8963, -24.5911$, and the grayscale version is $172.0000, 0.0000, 0.0000$.

A 20% lighter version of the original color is $226.9600, -5.8963, 24.5911$, and $119.1770, -5.0173, 22.6468$ is the 20% darker color. If you saturate the color by 10%, you get $157.9400, -8.8444, 36.8866$, and if you desaturate by 10%, it is $185.9800, -2.9481, 12.2955$.

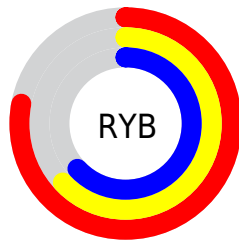
Distribution



Red (78%)

Green (63%)

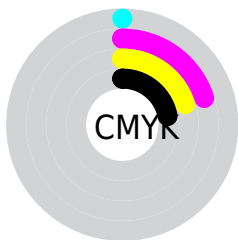
Blue (63%)



Red (78%)

Yellow (63%)

Blue (63%)

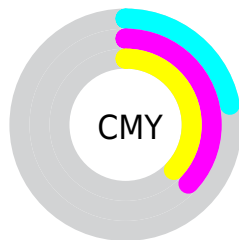


Cyan (0%)

Magenta (20%)

Yellow (20%)

Black (22%)



Cyan (22%)

Magenta (37%)

Yellow (37%)

Brightness & Saturation Gradients

These gradients show how the YUV color 171.9600, -5.8963, 24.5911 changes by changing the brightness by 10 percent. The first figure shows a shift by +10% for each color and the second figure -10%.

Similar to the brightness gradients but the following saturation gradients show a change of the YUV color 171.9600, -5.8963, 24.5911 by changing the saturation by 10% instead.

■ 171.9600, -5.8963,
24.5911

■ 171.9600, -5.8963,
24.5911

255.0000, 0.0000,
0.0000

■ 145.3620, -5.6015,
23.3615

■ 226.9600, -5.8963,
24.5911

■ 119.1770, -5.0173,
22.6468

■ 246.5880, -1.7689,
7.3773

■ 94.4650, -5.1592,
21.5172

■ 70.8670, -4.8644,
20.2876

■ 47.6820, -4.2802,
19.5729

■ 26.4860, -3.6906,
17.1138

■ 7.5890, -3.2484,

15.2694

■ 0.0000, 0.0000,
0.0000

■ 171.9600, -5.8963,
24.5911

■ 171.9600, -5.8963,
24.5911

■ 157.9400, -8.8444,
36.8866

■ 185.9800, -2.9481,
12.2955

■ 143.9200,
-11.7926, 49.1822

■ 200.0000, 0.0000,
0.0000

■ 129.9000,
-14.7407, 61.4777

■ 214.0200, 2.9481,
-12.2955

■ 115.8800,
-17.6888, 73.7732

■ 228.0400, 5.8963,
-24.5911

■ 101.8600,
-20.6370, 86.0688

■ 238.5550, 8.1074,
-33.8127

■ 87.8400, -23.5851,
98.3643

■ 73.8200, -26.5333,
110.6599

■ 59.8000, -29.4814,
122.9554

Harmonies

Analogous

The Analogous color harmony consists of three colors that are next to each other on the color wheel.



172.4740, 1.2453, 20.6323



171.9600, -5.8963, 24.5911



171.1570, -11.4164, 21.7873

Triad

The Triadic color harmony groups three colors that are evenly spaced from another and form a triangle on the color wheel.



171.9600, -5.8963, 24.5911



166.5720, -7.6770, -11.0256



167.6740, 14.4577, -17.2541

Complementary

The Complementary color scheme is a pair of colors which are on the opposite of each other on the color wheel.



171.9600, -5.8963, 24.5911



188.0400, 5.8963, -24.5911

Split Complementary

Split-complementary colors differ from the complementary color scheme. The scheme consists of three colors, the original color and two neighbors of the complement color.



165.4510, 12.5957, -26.7055



171.9600, -5.8963, 24.5911



165.1560, -0.0769, -22.0618

Square

The Square scheme is like the rectangle color scheme, but the four colors are evenly spaced on the color wheel.



171.9600, -5.8963, 24.5911



168.0960, -12.3723, 1.6698



164.3600, 7.2175, -28.3797



170.3060, 12.6671, -2.8994

Rectangle

The Rectangle color scheme consists of four colors that form a rectangle on the color wheel.



171.9600, -5.8963, 24.5911



170.2550, -13.4367, 16.4394



164.3600, 7.2175, -28.3797



167.2390, 14.1792, -21.2576

Sweetspot

The Sweet Spot groups the original color and five complimentary colors.



171.9600, -5.8963, 24.5911



244.4850, -2.2111, 9.2217



176.5200, 11.5756, 20.5920



121.6910, -1.3267, 5.5330



0.0000, 0.0000, 0.0000



128.0000, 0.0000, 0.0000

Same Dimension

The Same Dimension uses a secret algorithm to generate beautiful new colors.



171.9600, -5.8963, 24.5911



212.2390, -8.9918, 37.5014



183.7000, -11.6841, 14.2951



92.6910, -1.3267, 5.5330



48.7370, -24.0273, 100.2087



10.7640, -5.3067, 22.1320

Inverse Universe

The Inverse Universe completely reimagines the original color for something new.



188.0400, 5.8963, -24.5911



236.7610, 8.9918, -37.5014



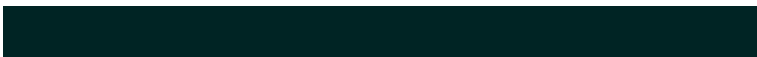
176.3000, 11.6841, -14.2951



96.3090, 1.3267, -5.5330



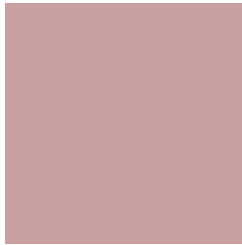
114.2630, 24.0273, -100.2087



25.2360, 5.3067, -22.1320

Previews

White Background



This preview shows how the YUV color 171.9600, -5.8963, 24.5911 looks on a white background.

Color Contrast Check

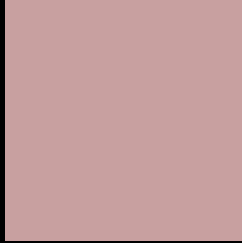
Large Text (above 18pt) WCAG AA × Fail

Any Text WCAG AA × Fail

Large Text (above 18pt) WCAG AAA × Fail

Any Text WCAG AAA × Fail

Black Background



This preview shows how the YUV color 171.9600, -5.8963, 24.5911 looks on a black background.

Color Contrast Check

Large Text (above 18pt) WCAG AA ✓ Pass

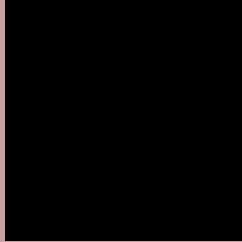
Any Text WCAG AA ✓ Pass

Large Text (above 18pt) WCAG AAA ✓ Pass

Any Text WCAG AAA ✓ Pass

If you want to check with other color combinations, try the [Color Contrast Checker](#).

YUV 171.9600, -5.8963, 24.5911 Background



This preview shows how black text looks on a background with the YUV color 171.9600, -5.8963, 24.5911.



This preview shows how white text looks on a background with the YUV color 171.9600, -5.8963,

Color Blindness Simulation

Color vision deficiency is a very complex topic, and I could not describe the different causes any better than Wikipedia does, so if you want to learn more, you should check out their [article about color blindness](#).

Dichromacy



Original Color

171.9600, -5.8963, 24.5911

Protanopia

170.0390, -2.4842, 3.4738

Deuteranopia

171.2040, -6.0166, 16.4841



Tritanopia

172.3390, -0.6601, 25.1357

Trichromacy



Original Color

171.9600, -5.8963, 24.5911

Protanomaly

170.7410, -3.8163, 10.7511

Deuteranomaly

171.8130, -6.3168, 19.4580

Tritanomaly

172.4700, -2.6967, 25.0208

Monochromacy



Original Color

171.9600, -5.8963, 24.5911

Achromatopsia

172.0000, 0.0000, 0.0000

Achromatomaly

172.1860, -2.0637, 8.6069

CSS Examples

Text

The CSS property to change the color of the text to YUV 171.9600, -5.8963, 24.5911 is called "color". The color property can be set on classes, ids or directly on the HTML element.

This example shows how text in the color `rgb(200, 160, 160)` looks like.

```
.text, #text, p{  
    color:rgb(200, 160, 160)  
}
```

If you want to add a text shadow in that color use the text-shadow property, you can generate a text shadow directly with our [CSS Text Shadow Generator](#).

Here you see how black text with a 4 pixel rgb(200, 160, 160) colored shadow looks like.

```
.shadow{ text-shadow: 4px 4px 2px rgb(200, 160, 160) }
```

Border

The CSS property to change the border of an element to YUV 171.9600, -5.8963, 24.5911 is called "border". The border property can be set on classes, ids or directly on the HTML element.

This example shows the color as border, it can be applied via the CSS property "border" or "border-color".

```
.border, #border, table{ border:4px solid rgb(200, 160, 160) }
```


If only the border color should be changed use the property `border-color`.

```
.border{ border-color:rgb(200, 160, 160) }
```

If you want to add a box shadow in that color use:

Here you see how a box with a 4 pixel `rgb(200, 160, 160)` colored shadow looks like.

```
.boxshadow{ -moz-box-shadow:4px 4px 4px  
4px rgb(200, 160, 160); -webkit-box-  
shadow:4px 4px 4px 4px rgb(200, 160, 160);  
box-shadow:4px 4px 4px 4px rgb(200, 160,  
160) }
```

Background

The CSS property to change the background color of an element to YUV 171.9600, -5.8963, 24.5911 is called "background". The background property can be set on classes, ids or directly on the HTML element.

```
.background, #background, body{  
background: rgb(200, 160, 160) }
```

If only the background color should be changed can be used:

```
.background{ background-color: rgb(200,  
160, 160) }
```

This example shows the color as background, it is applied via the CSS property "background".

To optimize and compress your CSS code, you can use our [online CSS compressor and optimizer](#) based on csstidy. If you want to create a linear or radial gradient as background or border, check our [CSS Gradient Generator](#).

Hey! You found this booklet interesting? Support Converting Colors with the new Membership Option!

The pro membership hides all ads, plus gives you double the colors in the color bucket, and more awesome pro features!

[Learn more, Memberships starting at \\$2.50/m!](#)

**Follow me
on Twitter!**

@ConvertingColor