

Converting Colors

YUV(172.2150, -6.0220,
18.2284)

Have a look what the booklet for
YUV(172.2150, -6.0220, 18.2284)
contains.

YUV(172.2150, -6.0220, 18.2284)	3
<i>Conversions</i>	4
<i>Details</i>	6
<i>Harmonies</i>	12
<i>Previews</i>	24
<i>Color Blindness Simulation</i>	28
<i>CSS Examples</i>	31

Color

**YUV(172.2150, -6.0220,
18.2284)**

Conversions

Conversions Part 1

Format	Color
Hex	C1A4A0
RGB	193, 164, 160
RGB Percent	76%, 64%, 63%
CMY	0.2431, 0.3569, 0.3725
CMYK	0.00, 0.15, 0.17, 0.24
HSL	7°, 21%, 69%
HSV	7°, 17%, 76%
XYZ	41.6129, 40.4264, 38.8676
YIQ	172.2150, 18.5680, 4.9040

Conversions

Conversions Part 2

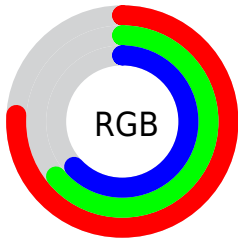
Format	Color
RYB	193, 165, 160
Decimal	12690592
CIELab	69.77, 9.96, 6.01
CIElCh	70, 11.629, 31.108
Yxy	40.4264, 0.3442, 0.3344
Android (android.graphics.Color)	4290880672 (0xFFC1A4A0)
YUV	172.2150, -6.0220, 18.2284
Hunter-Lab	63.5818, 5.5564, 8.2633

Details

The YUV color **172.2150, -6.0220, 18.2284** is a light color, and the websafe version is hex **CC9999**. A complement of this color would be **180.7850, 6.0220, -18.2284**, and the grayscale version is **172.0000, 0.0000, 0.0000**.

A 20% lighter version of the original color is **227.8130, -6.3168, 19.4580**, and **119.7310, -5.2904, 16.8989** is the 20% darker color. If you saturate the color by 10%, you get **160.0700, -9.4015, 28.8796**, and if you desaturate by 10%, it is **184.3600, -2.6425, 7.5773**.

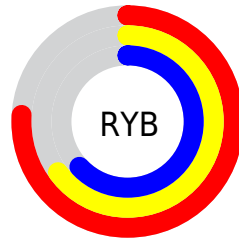
Distribution



Red (76%)

Green (64%)

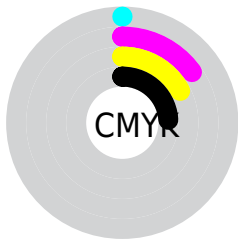
Blue (63%)



Red (76%)

Yellow (65%)

Blue (63%)

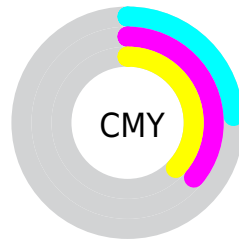


Cyan (0%)

Magenta (15%)

Yellow (17%)

Black (24%)



Cyan (24%)

Magenta (36%)

Yellow (37%)

Brightness & Saturation Gradients

These gradients show how the YUV color 172.2150, -6.0220, 18.2284 changes by changing the brightness by 10 percent. The first figure shows a shift by +10% for each color and the second figure -10%.

Similar to the brightness gradients but the following saturation gradients show a change of the YUV color 172.2150, -6.0220, 18.2284 by changing the saturation by 10% instead.

■ 172.2150, -6.0220,
18.2284

■ 172.2150, -6.0220,
18.2284

255.0000, 0.0000,
0.0000

■ 145.9160, -5.8746,
17.6137

■ 227.8130, -6.3168,
19.4580

■ 119.7310, -5.2904,
16.8989

■ 248.9360, -2.9264,
5.3181

■ 95.0190, -5.4324,
15.7693

■ 70.8340, -4.8482,
15.0546

■ 48.5350, -4.7008,
14.4398

■ 27.6380, -4.2585,
12.5955

■ 5.9800, -2.9481,

12.2955

0.0000, 0.0000,
0.0000

172.2150, -6.0220,
18.2284

172.2150, -6.0220,
18.2284

160.0700, -9.4015,
28.8796

184.3600, -2.6425,
7.5773

147.8110,
-13.2178, 39.6308

196.6190, 1.1738,
-3.1739

135.6660,
-16.5973, 50.2819

208.7640, 4.5533,
-13.8250

123.5210,
-19.9769, 60.9331

220.9090, 7.9329,
-24.4762

111.2620,
-23.7932, 71.6842

232.9400, 10.8756,
-35.0274

■ 99.1170, -27.1727,
82.3354

■ 236.4620, 9.1392,
-38.1162

■ 86.9720, -30.5522,
92.9866

■ 74.8270, -33.9317,
103.6377

■ 71.2080, -35.1055,
106.8116

Harmonies

Analogous

The Analogous color harmony consists of three colors that are next to each other on the color wheel.



172.4690, -1.2172, 17.1287



172.2150, -6.0220, 18.2284



170.9820, -9.3581, 14.9248

Triad

The Triadic color harmony groups three colors that are evenly spaced from another and form a triangle on the color wheel.



172.2150, -6.0220, 18.2284



167.8970, -3.8932, -11.3107



169.9910, 10.3574, -8.7621

Complementary

The Complementary color scheme is a pair of colors which are on the opposite of each other on the color wheel.



172.2150, -6.0220, 18.2284



180.7850, 6.0220, -18.2284

Split Complementary

Split-complementary colors differ from the complementary color scheme. The scheme consists of three colors, the original color and two neighbors of the complement color.



168.2350, 10.2371, -16.8691



172.2150, -6.0220, 18.2284



166.9330, 1.5120, -18.3582

Square

The Square scheme is like the rectangle color scheme, but the four colors are evenly spaced on the color wheel.



172.2150, -6.0220, 18.2284



168.8120, -8.2883, -1.5891



167.0020, 6.9010, -20.1728



171.7750, 7.9989, 1.0743

Rectangle

The Rectangle color scheme consists of four colors that form a rectangle on the color wheel.



172.2150, -6.0220, 18.2284



170.7210, -10.2155, 9.8917



167.0020, 6.9010, -20.1728



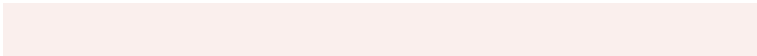
169.3820, 10.6577, -11.7360

Sweetspot

The Sweet Spot groups the original color and five complimentary colors.



172.2150, -6.0220, 18.2284



242.0610, -2.4951, 6.9625



173.1730, 7.8027, 17.3883



119.9790, -1.4686, 4.4034



252.0000, 0.0000, 0.0000



125.0000, 0.0000, 0.0000

Same Dimension

The Same Dimension uses a secret algorithm to generate beautiful new colors.



172.2150, -6.0220, 18.2284



216.9560, -9.8383, 28.9796



181.6070, -10.6523, 9.9917



90.5770, -1.7635, 5.6330



59.2920, -29.2310, 89.1979



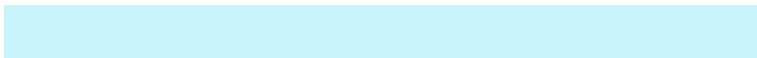
12.2150, -6.0220, 18.2284

Inverse Universe

The Inverse Universe completely reimagines the original color for something new.



180.7850, 6.0220, -18.2284



230.6310, 9.5489, -29.4944



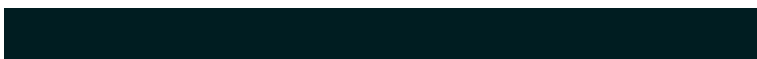
171.3930, 10.6523, -9.9917



93.4230, 1.7635, -5.6330



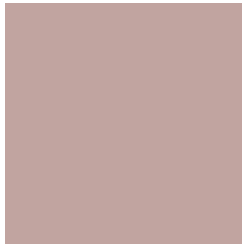
101.1210, 29.5203, -88.6831



20.7850, 6.0220, -18.2284

Previews

White Background



This preview shows how the YUV color 172.2150, -6.0220, 18.2284 looks on a white background.

Color Contrast Check

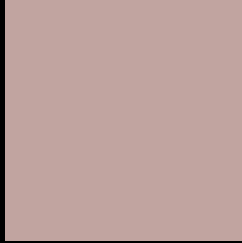
Large Text (above 18pt) WCAG AA × Fail

Any Text WCAG AA × Fail

Large Text (above 18pt) WCAG AAA × Fail

Any Text WCAG AAA × Fail

Black Background



This preview shows how the YUV color 172.2150, -6.0220, 18.2284 looks on a black background.

Color Contrast Check

Large Text (above 18pt) WCAG AA ✓ Pass

Any Text WCAG AA ✓ Pass

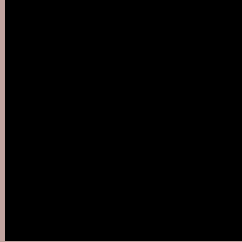
Large Text (above 18pt) WCAG AAA ✓ Pass

Any Text WCAG AAA ✓ Pass

If you want to check with other color combinations, try the [Color Contrast Checker](#).

YUV 172.2150, -6.0220, 18.2284

Background



This preview shows how black text looks on a background with the YUV color 172.2150, -6.0220, 18.2284.



This preview shows how white text looks on a background with the YUV color 172.2150, -6.0220,

Color Blindness Simulation

Color vision deficiency is a very complex topic, and I could not describe the different causes any better than Wikipedia does, so if you want to learn more, you should check out their [article about color blindness](#).

Dichromacy



Original Color

172.2150, -6.0220, 18.2284

Protanopia

170.6970, -3.7946, 3.7737

Deuteranopia

172.2040, -6.0166, 16.4841



Tritanopia

173.2350, 0.3771, 19.0879

Trichromacy



Original Color

172.2150, -6.0220, 18.2284

Protanomaly

171.5020, -4.6845, 9.2067

Deuteranomaly

172.5030, -6.1640, 17.0989

Tritanomaly

172.9530, -1.9488, 18.4582

Monochromacy



Original Color

172.2150, -6.0220, 18.2284

Achromatopsia

172.0000, 0.0000, 0.0000

Achromatomaly

172.1750, -2.0583, 6.8625

CSS Examples

Text

The CSS property to change the color of the text to YUV 172.2150, -6.0220, 18.2284 is called "color". The color property can be set on classes, ids or directly on the HTML element.

This example shows how text in the color `rgb(193, 164, 160)` looks like.

```
.text, #text, p{  
    color:rgb(193, 164, 160)  
}
```

If you want to add a text shadow in that color use the text-shadow property, you can generate a text shadow directly with our [CSS Text Shadow Generator](#).

Here you see how black text with a 4 pixel rgb(193, 164, 160) colored shadow looks like.

```
.shadow{ text-shadow: 4px 4px 2px rgb(193, 164, 160) }
```

Border

The CSS property to change the border of an element to YUV 172.2150, -6.0220, 18.2284 is called "border". The border property can be set on classes, ids or directly on the HTML element.

This example shows the color as border, it can be applied via the CSS property "border" or "border-color".

```
.border, #border, table{ border:4px solid rgb(193, 164, 160) }
```


If only the border color should be changed use the property `border-color`.

```
.border{ border-color:rgb(193, 164, 160) }
```

If you want to add a box shadow in that color use:

Here you see how a box with a 4 pixel `rgb(193, 164, 160)` colored shadow looks like.

```
.boxshadow{ -moz-box-shadow:4px 4px 4px  
4px rgb(193, 164, 160); -webkit-box-  
shadow:4px 4px 4px 4px rgb(193, 164, 160);  
box-shadow:4px 4px 4px 4px rgb(193, 164,  
160) }
```

Background

The CSS property to change the background color of an element to YUV 172.2150, -6.0220, 18.2284 is called "background". The background property can be set on classes, ids or directly on the HTML element.

```
.background, #background, body{  
background: rgb(193, 164, 160) }
```

If only the background color should be changed can be used:

```
.background{ background-color: rgb(193,  
164, 160) }
```

This example shows the color as background, it is applied via the CSS property "background".

To optimize and compress your CSS code, you can use our [online CSS compressor and optimizer](#) based on csstidy. If you want to create a linear or radial gradient as background or border, check our [CSS Gradient Generator](#).

Hey! You found this booklet interesting? Support Converting Colors with the new Membership Option!

The pro membership hides all ads, plus gives you double the colors in the color bucket, and more awesome pro features!

[Learn more, Memberships starting at \\$2.50/m!](#)

**Follow me
on Twitter!**

@ConvertingColor