

# Converting Colors

YUV(172.5560, -9.6411,  
59.1484)

Have a look what the booklet for  
YUV(172.5560, -9.6411, 59.1484)  
contains.

<b>YUV(172.5560, -9.6411, 59.1484)</b> .....	3
<b><i>Conversions</i></b> .....	4
<b><i>Details</i></b> .....	6
<b><i>Harmonies</i></b> .....	12
<b><i>Previews</i></b> .....	24
<b><i>Color Blindness Simulation</i></b> .....	28
<b><i>CSS Examples</i></b> .....	31

# Color

**YUV(172.5560, -9.6411,  
59.1484)**

# Conversions

## Conversions Part 1

<b>Format</b>	<b>Color</b>
Hex	F08E99
RGB	240, 142, 153
RGB Percent	94%, 56%, 60%
CMY	0.0588, 0.4431, 0.4000
CMYK	0.00, 0.41, 0.36, 0.06
HSL	353°, 77%, 75%
HSV	353°, 41%, 94%
XYZ	51.3580, 40.1712, 35.1839
YIQ	172.5560, 54.8770, 24.1970

# Conversions

## Conversions Part 2

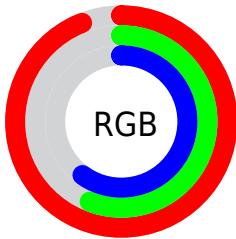
Format	Color
R <sub>Y</sub> B	240, 142, 153
Decimal	15765145
CIE Lab	69.59, 38.32, 10.33
CIE LCh	70, 39.688, 15.083
Yxy	40.1712, 0.4053, 0.3170
Android (android.graphics.Color)	4293955225 (0xFFFF08E99)
YUV	172.5560, -9.6411, 59.1484
Hunter-Lab	63.3807, 33.7238, 11.4534

# Details

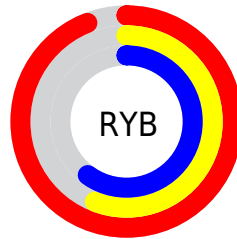
The YUV color **172.5560, -9.6411, 59.1484** is a light color, and the websafe version is hex **FF9999**. A complement of this color would be **209.4440, 9.6411, -59.1484**, and the grayscale version is **173.0000, 0.0000, 0.0000**.

A 20% lighter version of the original color is **215.4820, -4.1816, 34.6573**, and **118.5770, -8.1725, 54.7450** is the 20% darker color. If you saturate the color by 10%, you get **156.0740, -11.8685, 73.6031**, and if you desaturate by 10%, it is **189.0380, -7.4137, 44.6937**.

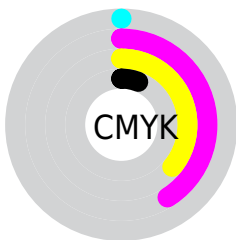
# Distribution



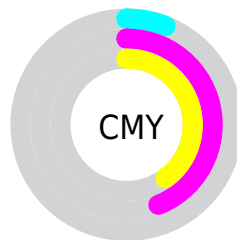
- Red (94%)
- Green (56%)
- Blue (60%)



- Red (94%)
- Yellow (56%)
- Blue (60%)



- Cyan (0%)
- Magenta (41%)
- Yellow (36%)
- Black (6%)



- Cyan (6%)
- Magenta (44%)
- Yellow (40%)

# Brightness & Saturation Gradients

These gradients show how the YUV color 172.5560, -9.6411, 59.1484 changes by changing the brightness by 10 percent. The first figure shows a shift by +10% for each color and the second figure -10%.

Similar to the brightness gradients but the following saturation gradients show a change of the YUV color 172.5560, -9.6411, 59.1484 by changing the saturation by 10% instead.



 172.5560, -9.6411,  
59.1484


 172.5560, -9.6411,  
59.1484

255.0000, 0.0000,  
0.0000

 145.3600, -9.0515,  
56.6893


 215.4820, -4.1816,  
34.6573


 118.5770, -8.1725,  
54.7450

 235.1100, -0.0542,  
17.4435

 92.2070, -7.0041,  
53.3155

254.4130, 0.2894,  
0.5148

 66.6520, -5.2514,  
51.1712

 38.7490, -2.3413,  
51.0861

 22.5970, -5.2243,  
42.4494

 14.2810, -6.0545,

28.6946

■ 0.0000, 0.0000,  
0.0000

■ 172.5560, -9.6411,  
59.1484

■ 172.5560, -9.6411,  
59.1484

■ 156.0740,  
-11.8685, 73.6031

■ 189.0380, -7.4137,  
44.6937

■ 139.4780,  
-14.5327, 88.1578

■ 205.6340, -4.7496,  
30.1390

■ 122.9960,  
-16.7600, 102.6125

■ 222.1160, -2.5222,  
15.6843

■ 106.5140,  
-18.9874, 117.0672

■ 238.5980, -0.2948,  
1.2296

■ 89.9180, -21.6516,  
131.6219

■ 250.5150, 2.2111,  
-9.2217

■ 74.8380, -23.5841,  
144.8471

# Harmonies

## Analogous

The Analogous color harmony consists of three colors that are next to each other on the color wheel.



174.5450, 7.1263, 47.7570



172.5560, -9.6411, 59.1484



170.6250, -24.4651, 53.8259

# Triad

The Triadic color harmony groups three colors that are evenly spaced from another and form a triangle on the color wheel.



172.5560, -9.6411, 59.1484



161.2380, -21.3163, -23.0107



156.8370, 40.5064, -65.6320

# Complementary

The Complementary color scheme is a pair of colors which are on the opposite of each other on the color wheel.



172.5560, -9.6411, 59.1484



209.4440, 9.6411, -59.1484

# Split Complementary

Split-complementary colors differ from the complementary color scheme. The scheme consists of three colors, the original color and two neighbors of the complement color.



134.2620, 42.2688, -117.7478



172.5560, -9.6411, 59.1484



153.7680, -1.8576, -57.6785

# Square

The Square scheme is like the rectangle color scheme, but the four colors are evenly spaced on the color wheel.



172.5560, -9.6411, 59.1484



165.7490, -32.9073, 8.1131



137.3440, 24.4804, -105.5417



169.2280, 34.3976, -19.4940



# Rectangle

The Rectangle color scheme consists of four colors that form a rectangle on the color wheel.



172.5560, -9.6411, 59.1484



169.3110, -31.7053, 42.7003



137.3440, 24.4804, -105.5417



150.2540, 41.2868, -82.6608

# Sweetspot

The Sweet Spot groups the original color and five complimentary colors.



172.5560, -9.6411, 59.1484



233.7250, -2.8224, 18.6582



179.1850, 29.9818, 43.6878



115.6100, -1.7797, 10.8660



0.0000, 0.0000, 0.0000



128.0000, 0.0000, 0.0000



# Same Dimension

The Same Dimension uses a secret algorithm to generate beautiful new colors.



172.5560, -9.6411, 59.1484



168.9710, -12.3107, 75.4474



193.6080, -25.4427, 40.6858



111.7020, -1.3321, 7.2773



57.4100, -17.9501, 111.0194



17.4280, -5.6340, 33.8276



# Inverse Universe

The Inverse Universe completely reimagines the original color for something new.



172.5560, -9.6411, 59.1484



168.9710, -12.3107, 75.4474



188.3920, 25.4427, -40.6858



111.7020, -1.3321, 7.2773



57.4100, -17.9501, 111.0194



17.4280, -5.6340, 33.8276



# Previews

## White Background



This preview shows how the YUV color 172.5560, -9.6411, 59.1484 looks on a white background.

## Color Contrast Check

Large Text (above 18pt) WCAG AA × Fail

Any Text WCAG AA × Fail

Large Text (above 18pt) WCAG AAA × Fail

Any Text WCAG AAA × Fail



# Black Background



This preview shows how the YUV color 172.5560, -9.6411, 59.1484 looks on a black background.

## Color Contrast Check

Large Text (above 18pt) WCAG AA ✓ Pass

Any Text WCAG AA ✓ Pass

Large Text (above 18pt) WCAG AAA ✓ Pass

Any Text WCAG AAA ✓ Pass

If you want to check with other color combinations, try the [Color Contrast Checker](#).

# YUV 172.5560, -9.6411, 59.1484 Background



This preview shows how black text looks on a background with the YUV color 172.5560, -9.6411, 59.1484.



This preview shows how white text looks on a background with the YUV color 172.5560, -9.6411,



# Color Blindness Simulation

Color vision deficiency is a very complex topic, and I could not describe the different causes any better than Wikipedia does, so if you want to learn more, you should check out their [article about color blindness](#).

## Dichromacy



### Original Color

172.5560, -9.6411, 59.1484

### Protanopia

170.9680, -1.4632, 2.6591

### Deuteranopia

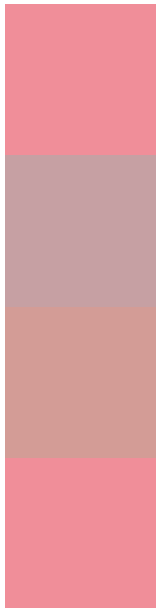
171.5590, -11.1216, 20.5578



## Tritanopia

172.5560, -9.6411, 59.1484

# Trichromacy



## Original Color

172.5560, -9.6411, 59.1484

## Protanomaly

171.7040, -4.2911, 23.0616

## Deuteranomaly

171.7610, -10.7282, 34.4126

## Tritanomaly

172.5560, -9.6411, 59.1484

# Monochromacy



## Original Color

172.5560, -9.6411, 59.1484

## Achromatopsia

173.0000, 0.0000, 0.0000

## Achromatomaly

172.9210, -3.4121, 21.1173

# CSS Examples

## Text

The CSS property to change the color of the text to YUV 172.5560, -9.6411, 59.1484 is called "color". The color property can be set on classes, ids or directly on the HTML element.

This example shows how text in the color `rgb(240, 142, 153)` looks like.

```
.text, #text, p{  
    color:rgb(240, 142, 153)  
}
```

If you want to add a text shadow in that color use the text-shadow property, you can generate a text shadow directly with our [CSS Text Shadow Generator](#).

Here you see how black text with a 4 pixel rgb(240, 142, 153) colored shadow looks like.

```
.shadow{ text-shadow: 4px 4px 2px rgb(240, 142, 153) }
```

## Border

The CSS property to change the border of an element to YUV 172.5560, -9.6411, 59.1484 is called "border". The border property can be set on classes, ids or directly on the HTML element.

This example shows the color as border, it can be applied via the CSS property "border" or "border-color".

```
.border, #border, table{ border:4px solid rgb(240, 142, 153) }
```



If only the border color should be changed use the property `border-color`.

```
.border{ border-color:rgb(240, 142, 153) }
```

If you want to add a box shadow in that color use:

Here you see how a box with a 4 pixel `rgb(240, 142, 153)` colored shadow looks like.

```
.boxshadow{ -moz-box-shadow:4px 4px 4px  
4px rgb(240, 142, 153); -webkit-box-  
shadow:4px 4px 4px 4px rgb(240, 142, 153);  
box-shadow:4px 4px 4px 4px rgb(240, 142,  
153) }
```

# Background

The CSS property to change the background color of an element to YUV 172.5560, -9.6411, 59.1484 is called "background". The background property can be set on classes, ids or directly on the HTML element.

```
.background, #background, body{  
background: rgb(240, 142, 153) }
```

If only the background color should be changed can be used:

```
.background{ background-color: rgb(240,  
142, 153) }
```

This example shows the color as background, it is applied via the CSS property "background".

To optimize and compress your CSS code, you can use our [online CSS compressor and optimizer](#) based on csstidy. If you want to create a linear or radial gradient as background or border, check our [CSS Gradient Generator](#).

Hey! You found this booklet interesting? Support Converting Colors with the new Membership Option!

The pro membership hides all ads, plus gives you double the colors in the color bucket, and more awesome pro features!

**[Learn more, Memberships starting at \\$2.50/m!](#)**

**Follow me  
on Twitter!**

@ConvertingColor