

Converting Colors

YUV(172.6710, -4.2748,
17.8285)

Have a look what the booklet for
YUV(172.6710, -4.2748, 17.8285)
contains.

YUV(172.6710, -4.2748, 17.8285)	3
<i>Conversions</i>	4
<i>Details</i>	6
<i>Harmonies</i>	12
<i>Previews</i>	24
<i>Color Blindness Simulation</i>	28
<i>CSS Examples</i>	31

Color

**YUV(172.6710, -4.2748,
17.8285)**

Conversions

Conversions Part 1

Format	Color
Hex	C1A4A4
RGB	193, 164, 164
RGB Percent	76%, 64%, 64%
CMY	0.2431, 0.3569, 0.3569
CMYK	0.00, 0.15, 0.15, 0.24
HSL	0°, 19%, 70%
HSV	0°, 15%, 76%
XYZ	41.9686, 40.5687, 40.7405
YIQ	172.6710, 17.2840, 6.1480

Conversions

Conversions Part 2

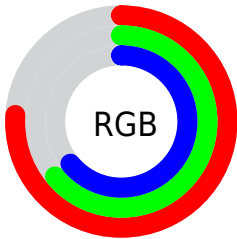
Format	Color
R _Y B	193, 164, 164
Decimal	12690596
CIE Lab	69.87, 10.60, 3.94
CIE LCh	70, 11.310, 20.377
Yxy	40.5687, 0.3404, 0.3291
Android (android.graphics.Color)	4290880676 (0xFFC1A4A4)
YUV	172.6710, -4.2748, 17.8285
Hunter-Lab	63.6936, 6.1525, 6.6617

Details

The YUV color $172.6710, -4.2748, 17.8285$ is a light color, and the websafe version is hex $CC9999$. A complement of this color would be $184.3290, 4.2748, -17.8285$, and the grayscale version is $173.0000, 0.0000, 0.0000$.

A 20% lighter version of the original color is $228.2690, -4.5696, 19.0581$, and $120.0730, -3.9800, 16.5990$ is the 20% darker color. If you saturate the color by 10%, you get $159.3520, -7.0755, 29.5093$, and if you desaturate by 10%, it is $185.9900, -1.4741, 6.1478$.

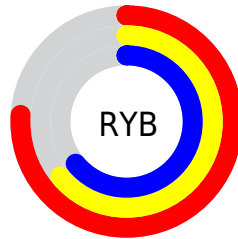
Distribution



Red (76%)

Green (64%)

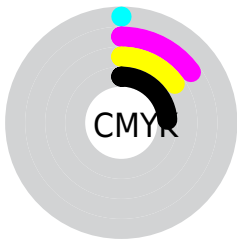
Blue (64%)



Red (76%)

Yellow (64%)

Blue (64%)

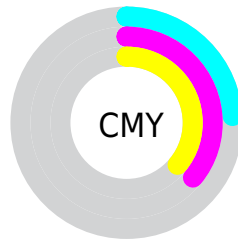


Cyan (0%)

Magenta (15%)

Yellow (15%)

Black (24%)



Cyan (24%)

Magenta (36%)

Yellow (36%)

Brightness & Saturation Gradients

These gradients show how the YUV color 172.6710, -4.2748, 17.8285 changes by changing the brightness by 10 percent. The first figure shows a shift by +10% for each color and the second figure -10%.

Similar to the brightness gradients but the following saturation gradients show a change of the YUV color 172.6710, -4.2748, 17.8285 by changing the saturation by 10% instead.

■ 172.6710, -4.2748,
17.8285

■ 172.6710, -4.2748,
17.8285

255.0000, 0.0000,
0.0000

■ 146.3720, -4.1274,
17.2138

■ 228.2690, -4.5696,
19.0581

■ 120.0730, -3.9800,
16.5990

■ 249.9790, -1.4686,
4.4034

■ 95.4750, -3.6852,
15.3694

■ 71.5890, -3.2484,
15.2694

■ 48.9910, -2.9536,
14.0399

■ 27.9800, -2.9481,
12.2955

■ 6.5780, -3.2430,

13.5251

■ 0.0000, 0.0000,
0.0000

■ 172.6710, -4.2748,
17.8285

■ 172.6710, -4.2748,
17.8285

■ 159.3520, -7.0755,
29.5093

■ 185.9900, -1.4741,
6.1478

■ 145.3320,
-10.0237, 41.8048

■ 200.0100, 1.4741,
-6.1478

■ 132.0130,
-12.8244, 53.4856

■ 213.3290, 4.2748,
-17.8285

■ 118.6940,
-15.6251, 65.1664

■ 226.6480, 7.0755,
-29.5093

■ 105.3750,
-18.4259, 76.8471

■ 236.4620, 9.1392,
-38.1162

■ 91.3550, -21.3740,
89.1427

■ 78.0360, -24.1747,
100.8234

■ 64.7170, -26.9755,
112.5042

■ 57.7070, -28.4496,
118.6520

Harmonies

Analogous

The Analogous color harmony consists of three colors that are next to each other on the color wheel.



172.9140, 0.5354, 14.9844



172.6710, -4.2748, 17.8285



171.9220, -8.3425, 15.8544

Triad

The Triadic color harmony groups three colors that are evenly spaced from another and form a triangle on the color wheel.



172.6710, -4.2748, 17.8285



168.4630, -5.6513, -7.4221



169.9690, 10.3683, -12.2508

Complementary

The Complementary color scheme is a pair of colors which are on the opposite of each other on the color wheel.



172.6710, -4.2748, 17.8285



184.3290, 4.2748, -17.8285

Split Complementary

Split-complementary colors differ from the complementary color scheme. The scheme consists of three colors, the original color and two neighbors of the complement color.



167.8820, 8.9322, -18.3135



172.6710, -4.2748, 17.8285



167.7870, -0.3880, -15.5992

Square

The Square scheme is like the rectangle color scheme, but the four colors are evenly spaced on the color wheel.



172.6710, -4.2748, 17.8285



169.6060, -9.1728, 2.0995



167.4320, 4.7170, -19.6729



171.3940, 9.1728, -2.0995

Rectangle

The Rectangle color scheme consists of four colors that form a rectangle on the color wheel.



172.6710, -4.2748, 17.8285



171.5580, -9.6421, 12.6656



167.4320, 4.7170, -19.6729



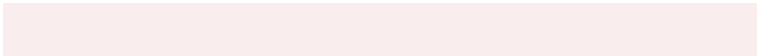
169.5450, 10.0843, -14.5100

Sweetspot

The Sweet Spot groups the original color and five complimentary colors.



172.6710, -4.2748, 17.8285



240.8870, -1.9163, 7.9921



175.9770, 8.3923, 14.9292



119.3920, -1.1793, 4.9182



252.0000, 0.0000, 0.0000



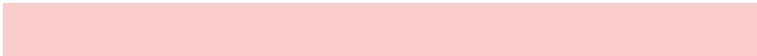
125.0000, 0.0000, 0.0000

Same Dimension

The Same Dimension uses a secret algorithm to generate beautiful new colors.



172.6710, -4.2748, 17.8285



218.4550, -6.6333, 27.6650



181.4760, -8.6157, 10.1065



89.9900, -1.4741, 6.1478



48.1390, -23.7325, 98.9791



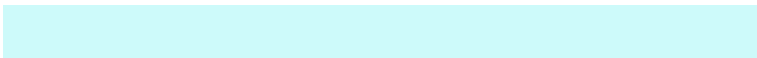
9.8670, -4.8644, 20.2876

Inverse Universe

The Inverse Universe completely reimagines the original color for something new.



184.3290, 4.2748, -17.8285



236.5450, 6.6333, -27.6650



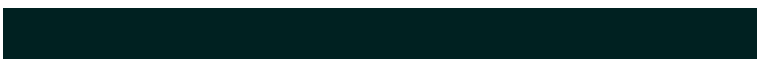
176.1110, 8.3263, -10.6213



94.0100, 1.4741, -6.1478



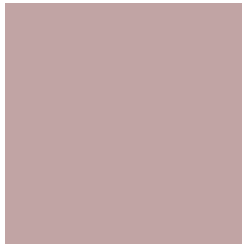
112.8610, 23.7325, -98.9791



23.1330, 4.8644, -20.2876

Previews

White Background



This preview shows how the YUV color 172.6710, -4.2748, 17.8285 looks on a white background.

Color Contrast Check

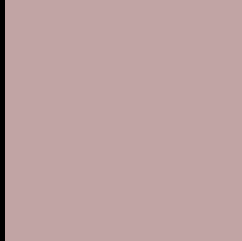
Large Text (above 18pt) WCAG AA × Fail

Any Text WCAG AA × Fail

Large Text (above 18pt) WCAG AAA × Fail

Any Text WCAG AAA × Fail

Black Background



This preview shows how the YUV color 172.6710, -4.2748, 17.8285 looks on a black background.

Color Contrast Check

Large Text (above 18pt) WCAG AA ✓ Pass

Any Text WCAG AA ✓ Pass

Large Text (above 18pt) WCAG AAA ✓ Pass

Any Text WCAG AAA ✓ Pass

If you want to check with other color combinations, try the [Color Contrast Checker](#).

YUV 172.6710, -4.2748, 17.8285

Background



This preview shows how black text looks on a background with the YUV color 172.6710, -4.2748, 17.8285.



This preview shows how white text looks on a background with the YUV color 172.6710, -4.2748,

Color Blindness Simulation

Color vision deficiency is a very complex topic, and I could not describe the different causes any better than Wikipedia does, so if you want to learn more, you should check out their [article about color blindness](#).

Dichromacy



Original Color

172.6710, -4.2748, 17.8285

Protanopia

171.1530, -2.0474, 3.3738

Deuteranopia

172.3610, -4.1220, 15.4694



Tritanopia

173.0500, 0.9614, 18.3732

Trichromacy



Original Color

172.6710, -4.2748, 17.8285

Protanomaly

171.9580, -2.9373, 8.8068

Deuteranomaly

172.6600, -4.2694, 16.0842

Tritanomaly

173.1810, -1.0752, 18.2583

Monochromacy



Original Color

172.6710, -4.2748, 17.8285

Achromatopsia

173.0000, 0.0000, 0.0000

Achromatomaly

172.9900, -1.4741, 6.1478

CSS Examples

Text

The CSS property to change the color of the text to YUV 172.6710, -4.2748, 17.8285 is called "color". The color property can be set on classes, ids or directly on the HTML element.

This example shows how text in the color `rgb(193, 164, 164)` looks like.

```
.text, #text, p{  
    color:rgb(193, 164, 164)  
}
```

If you want to add a text shadow in that color use the text-shadow property, you can generate a text shadow directly with our [CSS Text Shadow Generator](#).

Here you see how black text with a 4 pixel rgb(193, 164, 164) colored shadow looks like.

```
.shadow{ text-shadow: 4px 4px 2px rgb(193, 164, 164) }
```

Border

The CSS property to change the border of an element to YUV 172.6710, -4.2748, 17.8285 is called "border". The border property can be set on classes, ids or directly on the HTML element.

This example shows the color as border, it can be applied via the CSS property "border" or "border-color".

```
.border, #border, table{ border:4px solid rgb(193, 164, 164) }
```


If only the border color should be changed use the property `border-color`.

```
.border{ border-color:rgb(193, 164, 164) }
```

If you want to add a box shadow in that color use:

Here you see how a box with a 4 pixel `rgb(193, 164, 164)` colored shadow looks like.

```
.boxshadow{ -moz-box-shadow:4px 4px 4px  
4px rgb(193, 164, 164); -webkit-box-  
shadow:4px 4px 4px 4px rgb(193, 164, 164);  
box-shadow:4px 4px 4px 4px rgb(193, 164,  
164) }
```

Background

The CSS property to change the background color of an element to YUV 172.6710, -4.2748, 17.8285 is called "background". The background property can be set on classes, ids or directly on the HTML element.

```
.background, #background, body{  
background: rgb(193, 164, 164) }
```

If only the background color should be changed can be used:

```
.background{ background-color: rgb(193,  
164, 164) }
```

This example shows the color as background, it is applied via the CSS property "background".

To optimize and compress your CSS code, you can use our [online CSS compressor and optimizer](#) based on csstidy. If you want to create a linear or radial gradient as background or border, check our [CSS Gradient Generator](#).

Hey! You found this booklet interesting? Support Converting Colors with the new Membership Option!

The pro membership hides all ads, plus gives you double the colors in the color bucket, and more awesome pro features!

[Learn more, Memberships starting at \\$2.50/m!](#)

**Follow me
on Twitter!**

@ConvertingColor