

# Converting Colors

YUV(172.9090, -15.2381,  
34.2828)

Have a look what the booklet for  
YUV(172.9090, -15.2381, 34.2828)  
contains.

<b>YUV(172.9090, -15.2381, 34.2828)</b> .....	3
<b><i>Conversions</i></b> .....	4
<b><i>Details</i></b> .....	6
<b><i>Harmonies</i></b> .....	12
<b><i>Previews</i></b> .....	24
<b><i>Color Blindness Simulation</i></b> .....	28
<b><i>CSS Examples</i></b> .....	31

# Color

**YUV(172.9090, -15.2381,  
34.2828)**

# Conversions

## Conversions Part 1

Format	Color
Hex	D49F8E
RGB	212, 159, 142
RGB Percent	83%, 62%, 56%
CMY	0.1686, 0.3765, 0.4431
CMYK	0.00, 0.25, 0.33, 0.17
HSL	15°, 45%, 69%
HSV	15°, 33%, 83%
XYZ	44.4320, 40.7463, 31.1142
YIQ	172.9090, 37.0450, 5.9490

# Conversions

## Conversions Part 2

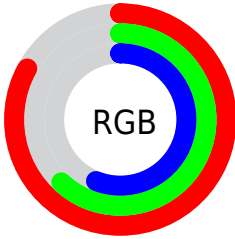
Format	Color
R <sub>Y</sub> B	212, 164, 142
Decimal	13934478
CIE Lab	70.00, 17.37, 16.54
CIE LCh	70, 23.985, 43.594
Yxy	40.7463, 0.3821, 0.3504
Android (android.graphics.Color)	4292124558 (0xFFD49F8E)
YUV	172.9090, -15.2381, 34.2828
Hunter-Lab	63.8328, 12.5407, 15.7831

# Details

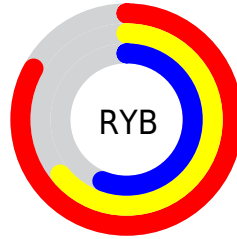
The YUV color **172.9090, -15.2381, 34.2828** is a light color, and the websafe version is hex **CC9999**. A complement of this color would be **181.0910, 15.2381, -34.2828**, and the grayscale version is **173.0000, 0.0000, 0.0000**.

A 20% lighter version of the original color is **224.2070, -13.9061, 27.0055**, and **119.9410, -13.7749, 31.6237** is the 20% darker color. If you saturate the color by 10%, you get **161.1230, -19.7806, 44.6191**, and if you desaturate by 10%, it is **184.6950, -10.6956, 23.9465**.

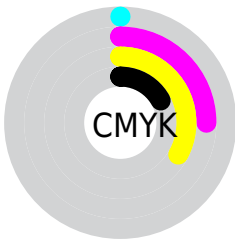
# Distribution



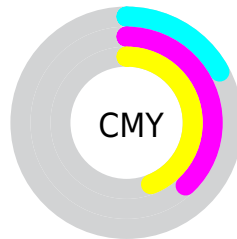
- Red (83%)
- Green (62%)
- Blue (56%)



- Red (83%)
- Yellow (64%)
- Blue (56%)



- Cyan (0%)
- Magenta (25%)
- Yellow (33%)
- Black (17%)



- Cyan (17%)
- Magenta (38%)
- Yellow (44%)

# Brightness & Saturation Gradients

These gradients show how the YUV color 172.9090, -15.2381, 34.2828 changes by changing the brightness by 10 percent. The first figure shows a shift by +10% for each color and the second figure -10%.

Similar to the brightness gradients but the following saturation gradients show a change of the YUV color 172.9090, -15.2381, 34.2828 by changing the saturation by 10% instead.



■ 172.9090,  
-15.2381, 34.2828

■ 172.9090,  
-15.2381, 34.2828

255.0000, 0.0000,  
0.0000

■ 146.3110,  
-14.9433, 33.0533

■ 224.2070,  
-13.9061, 27.0055

■ 119.9410,  
-13.7749, 31.6237

■ 243.8350, -9.7787,  
9.7917

■ 95.0440, -13.3327,  
29.7794

■ 254.6580, -1.3104,  
0.2999

■ 71.2610, -12.4537,  
27.8351

■ 47.5920, -11.1379,  
25.7908

■ 25.2390, -12.4428,  
24.3464

■ 9.3830, -4.1328,

18.9581

■ 0.0000, 0.0000,  
0.0000

■ 172.9090,  
-15.2381, 34.2828

■ 172.9090,  
-15.2381, 34.2828

■ 161.1230,  
-19.7806, 44.6191

■ 184.6950,  
-10.6956, 23.9465

■ 149.3370,  
-24.3231, 54.9555

■ 196.4810, -6.1531,  
13.6102

■ 137.4370,  
-29.3024, 65.3918

■ 208.3810, -1.1738,  
3.1739

■ 125.6510,  
-33.8449, 75.7281

■ 220.1670, 3.3687,  
-7.1625

■ 113.8650,  
-38.3874, 86.0644

■ 231.9530, 7.9112,  
-17.4988

■ 102.0790,  
-42.9299, 96.4007

■ 242.1430, 6.3385,  
-26.4354

■ 93.3250, -46.0092,  
104.0780

# Harmonies

## Analogous

The Analogous color harmony consists of three colors that are next to each other on the color wheel.



174.6240, -6.2236, 36.2868



172.9090, -15.2381, 34.2828



171.4640, -20.4418, 23.2721

# Triad

The Triadic color harmony groups three colors that are evenly spaced from another and form a triangle on the color wheel.



172.9090, -15.2381, 34.2828



163.7050, -2.8126, -31.3133



171.3140, 20.5512, -11.6764

# Complementary

The Complementary color scheme is a pair of colors which are on the opposite of each other on the color wheel.



172.9090, -15.2381, 34.2828



181.0910, 15.2381, -34.2828

# Split Complementary

Split-complementary colors differ from the complementary color scheme. The scheme consists of three colors, the original color and two neighbors of the complement color.



166.6380, 22.3635, -33.0085



172.9090, -15.2381, 34.2828



161.1300, 9.3029, -43.9640

# Square

The Square scheme is like the rectangle color scheme, but the four colors are evenly spaced on the color wheel.



172.9090, -15.2381, 34.2828



166.3670, -13.4919, -12.5999



161.9370, 18.7651, -45.5487



174.1490, 14.2235, 11.2703



# Rectangle

The Rectangle color scheme consists of four colors that form a rectangle on the color wheel.



172.9090, -15.2381, 34.2828



169.6970, -20.5566, 13.4207



161.9370, 18.7651, -45.5487



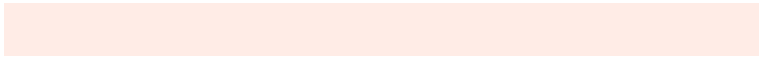
169.6120, 21.8833, -18.9537

# Sweetspot

The Sweet Spot groups the original color and five complimentary colors.



172.9090, -15.2381, 34.2828



240.9970, -5.4215, 12.2806



169.0860, 13.2686, 37.6356



119.1320, -3.5161, 7.7772



0.0000, 0.0000, 0.0000



128.0000, 0.0000, 0.0000



# Same Dimension

The Same Dimension uses a secret algorithm to generate beautiful new colors.



172.9090, -15.2381, 34.2828



198.1730, -22.2703, 49.8373



192.8670, -25.0774, 16.7796



101.0500, -2.4896, 5.2182



75.1960, -37.0716, 84.0201



19.3140, -9.5218, 20.7726



# Inverse Universe

The Inverse Universe completely reimagines the original color for something new.



181.0910, 15.2381, -34.2828



209.8270, 22.2703, -49.8373



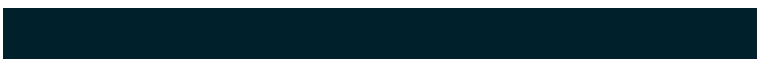
161.1330, 25.0774, -16.7796



101.9500, 2.4897, -5.2181



95.2170, 37.3610, -83.5053



24.2730, 9.2324, -21.2874



# Previews

## White Background



This preview shows how the YUV color 172.9090, -15.2381, 34.2828 looks on a white background.

## Color Contrast Check

Large Text (above 18pt) WCAG AA × Fail

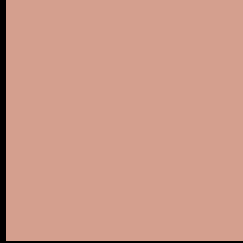
Any Text WCAG AA × Fail

Large Text (above 18pt) WCAG AAA × Fail

Any Text WCAG AAA × Fail



# Black Background



This preview shows how the YUV color 172.9090, -15.2381, 34.2828 looks on a black background.

## Color Contrast Check

Large Text (above 18pt) WCAG AA ✓ Pass

Any Text WCAG AA ✓ Pass

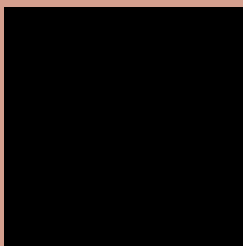
Large Text (above 18pt) WCAG AAA ✓ Pass

Any Text WCAG AAA ✓ Pass

If you want to check with other color combinations, try the [Color Contrast Checker](#).

# YUV 172.9090, -15.2381, 34.2828

## Background



This preview shows how black text looks on a background with the YUV color 172.9090, -15.2381, 34.2828.



This preview shows how white text looks on a background with the YUV color 172.9090, -15.2381, 34.2828.

34.2828.

# Color Blindness Simulation

Color vision deficiency is a very complex topic, and I could not describe the different causes any better than Wikipedia does, so if you want to learn more, you should check out their [article about color blindness](#).

## Dichromacy



### Original Color

172.9090, -15.2381, 34.2828

### Protanopia

171.0690, -11.3730, 7.8325

### Deuteranopia

172.4300, -15.4950, 23.3019



## Tritanopia

174.3080, -3.6028, 35.6869

# Trichromacy



## Original Color

172.9090, -15.2381, 34.2828

## Protanomaly

172.0810, -12.8579, 17.4690

## Deuteranomaly

172.7510, -15.6532, 27.4054

## Tritanomaly

173.5700, -7.6760, 35.4571

# Monochromacy



## Original Color

172.9090, -15.2381, 34.2828

## Achromatopsia

173.0000, 0.0000, 0.0000

## Achromatomaly

172.9970, -5.4215, 12.2806

# CSS Examples

## Text

The CSS property to change the color of the text to YUV 172.9090, -15.2381, 34.2828 is called "color". The color property can be set on classes, ids or directly on the HTML element.

This example shows how text in the color `rgb(212, 159, 142)` looks like.

```
.text, #text, p{  
    color:rgb(212, 159, 142)  
}
```

If you want to add a text shadow in that color use the text-shadow property, you can generate a text shadow directly with our [CSS Text Shadow Generator](#).

Here you see how black text with a 4 pixel rgb(212, 159, 142) colored shadow looks like.

```
.shadow{ text-shadow: 4px 4px 2px rgb(212, 159, 142) }
```

## Border

The CSS property to change the border of an element to YUV 172.9090, -15.2381, 34.2828 is called "border".

The border property can be set on classes, ids or directly on the HTML element.

This example shows the color as border, it can be applied via the CSS property "border" or "border-color".

```
.border, #border, table{ border:4px solid rgb(212, 159, 142) }
```



If only the border color should be changed use the property `border-color`.

```
.border{ border-color:rgb(212, 159, 142) }
```

If you want to add a box shadow in that color use:

Here you see how a box with a 4 pixel `rgb(212, 159, 142)` colored shadow looks like.

```
.boxshadow{ -moz-box-shadow:4px 4px 4px  
4px rgb(212, 159, 142); -webkit-box-  
shadow:4px 4px 4px 4px rgb(212, 159, 142);  
box-shadow:4px 4px 4px 4px rgb(212, 159,  
142) }
```

# Background

The CSS property to change the background color of an element to YUV 172.9090, -15.2381, 34.2828 is called "background". The background property can be set on classes, ids or directly on the HTML element.

```
.background, #background, body{  
background: rgb(212, 159, 142) }
```

If only the background color should be changed can be used:

```
.background{ background-color: rgb(212,  
159, 142) }
```

This example shows the color as background, it is applied via the CSS property "background".

To optimize and compress your CSS code, you can use our [online CSS compressor and optimizer](#) based on csstidy. If you want to create a linear or radial gradient as background or border, check our [CSS Gradient Generator](#).

Hey! You found this booklet interesting? Support Converting Colors with the new Membership Option!

The pro membership hides all ads, plus gives you double the colors in the color bucket, and more awesome pro features!

**[Learn more, Memberships starting at \\$2.50/m!](#)**

**Follow me  
on Twitter!**

@ConvertingColor