

Converting Colors

YUV(173.0240, -2.9698,
19.2730)

Have a look what the booklet for
YUV(173.0240, -2.9698, 19.2730)
contains.

YUV(173.0240, -2.9698, 19.2730)	3
<i>Conversions</i>	4
<i>Details</i>	6
<i>Harmonies</i>	12
<i>Previews</i>	24
<i>Color Blindness Simulation</i>	28
<i>CSS Examples</i>	31

Color

**YUV(173.0240, -2.9698,
19.2730)**

Conversions

Conversions Part 1

Format	Color
Hex	C3A3A7
RGB	195, 163, 167
RGB Percent	76%, 64%, 65%
CMY	0.2353, 0.3608, 0.3451
CMYK	0.00, 0.16, 0.14, 0.24
HSL	352°, 21%, 70%
HSV	352°, 16%, 76%
XYZ	42.5779, 40.5865, 42.1491
YIQ	173.0240, 17.7880, 8.0280

Conversions

Conversions Part 2

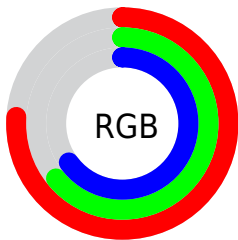
Format	Color
R_{YB}	195, 163, 167
Decimal	12821415
CIE _{Lab}	69.89, 12.38, 2.32
CIE _{LCh}	70, 12.597, 10.602
Yxy	40.5865, 0.3398, 0.3239
Android (android.graphics.Color)	4291011495 (0xFFC3A3A7)
YUV	173.0240, -2.9698, 19.2730
Hunter-Lab	63.7075, 7.8094, 5.3688

Details

The YUV color $173.0240, -2.9698, 19.2730$ is a light color, and the websafe version is hex $CC9999$. A complement of this color would be $184.9760, 2.9698, -19.2730$, and the grayscale version is $173.0000, 0.0000, 0.0000$.

A 20% lighter version of the original color is $228.6220, -3.2646, 20.5025$, and $120.4260, -2.6750, 18.0434$ is the 20% darker color. If you saturate the color by 10%, you get $159.9330, -4.8970, 30.7538$, and if you desaturate by 10%, it is $186.7020, -1.3321, 7.2773$.

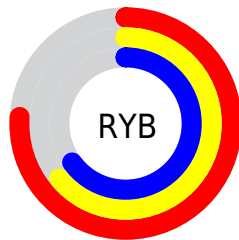
Distribution



Red (76%)

Green (64%)

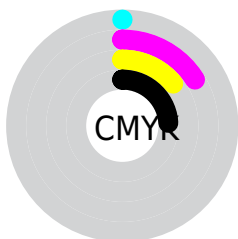
Blue (65%)



Red (76%)

Yellow (64%)

Blue (65%)

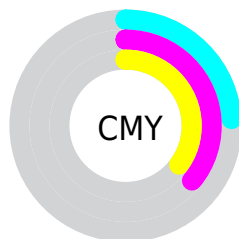


Cyan (0%)

Magenta (16%)

Yellow (14%)

Black (24%)



Cyan (24%)

Magenta (36%)

Yellow (35%)

Brightness & Saturation Gradients

These gradients show how the YUV color 173.0240, -2.9698, 19.2730 changes by changing the brightness by 10 percent. The first figure shows a shift by +10% for each color and the second figure -10%.

Similar to the brightness gradients but the following saturation gradients show a change of the YUV color 173.0240, -2.9698, 19.2730 by changing the saturation by 10% instead.

■ 173.0240, -2.9698,
19.2730

■ 173.0240, -2.9698,
19.2730

255.0000, 0.0000,
0.0000

■ 146.7250, -2.8224,
18.6582

■ 228.6220, -3.2646,
20.5025

■ 120.4260, -2.6750,
18.0434

■ 249.2610, 0.8573,
5.0331

■ 95.8280, -2.3802,
16.8138

■ 71.5290, -2.2328,
16.1991

■ 48.9310, -1.9380,
14.9695

■ 27.7460, -1.3538,
14.2548

■ 7.2900, -3.1010,

14.6547

■ 0.0000, 0.0000,
0.0000

■ 173.0240, -2.9698,
19.2730

■ 173.0240, -2.9698,
19.2730

■ 159.9330, -4.8970,
30.7538

■ 186.7020, -1.3321,
7.2773

■ 146.2550, -6.5347,
42.7494

■ 199.7930, 0.5951,
-4.2035

■ 133.1640, -8.4619,
54.2302

■ 212.8840, 2.5222,
-15.6843

■ 119.4860,
-10.0996, 66.2258

■ 226.5620, 4.1599,
-27.6799

■ 106.3950,
-12.0267, 77.7066

■ 236.7180, 7.5340,
-36.5867

■ 92.7170, -13.6645,
89.7022

■ 237.0600, 8.8444,
-36.8866

■ 79.0390, -15.3022,
101.6978

■ 65.8340, -17.6662,
113.2786

■ 61.0410, -18.2612,
117.4820

Harmonies

Analogous

The Analogous color harmony consists of three colors that are next to each other on the color wheel.



173.1850, 2.8668, 13.8698



173.0240, -2.9698, 19.2730



172.0580, -7.9166, 19.2431

Triad

The Triadic color harmony groups three colors that are evenly spaced from another and form a triangle on the color wheel.



173.0240, -2.9698, 19.2730



168.9040, -7.8407, -5.1778



168.8760, 11.4001, -16.5543

Complementary

The Complementary color scheme is a pair of colors which are on the opposite of each other on the color wheel.



173.0240, -2.9698, 19.2730



184.9760, 2.9698, -19.2730

Split Complementary

Split-complementary colors differ from the complementary color scheme. The scheme consists of three colors, the original color and two neighbors of the complement color.



167.7460, 8.5062, -21.7022



173.0240, -2.9698, 19.2730



167.6300, -2.2826, -14.5845

Square

The Square scheme is like the rectangle color scheme, but the four colors are evenly spaced on the color wheel.



173.0240, -2.9698, 19.2730



169.8730, -10.7834, 5.3734



167.1930, 3.8489, -21.2173



170.8280, 10.9308, -5.9882

Rectangle

The Rectangle color scheme consists of four colors that form a rectangle on the color wheel.



173.0240, -2.9698, 19.2730



171.4660, -10.0897, 16.2543



167.1930, 3.8489, -21.2173



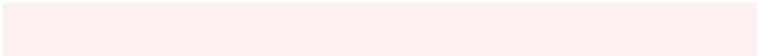
168.3380, 10.6794, -18.7134

Sweetspot

The Sweet Spot groups the original color and five complimentary colors.



173.0240, -2.9698, 19.2730



243.7020, -1.3321, 7.2773



175.0200, 9.8501, 14.0145



122.5060, -0.7425, 4.8182



0.0000, 0.0000, 0.0000



128.0000, 0.0000, 0.0000

Same Dimension

The Same Dimension uses a secret algorithm to generate beautiful new colors.



173.0240, -2.9698, 19.2730



217.6340, -4.7496, 30.1390



179.6120, -8.1897, 13.4953



90.1040, -1.0373, 6.0478



50.4190, -14.9966, 96.9795



10.3230, -3.1172, 19.8877

Inverse Universe

The Inverse Universe completely reimagines the original color for something new.



173.0240, -2.9698, 19.2730



217.6340, -4.7496, 30.1390



178.3880, 8.1897, -13.4953



90.1040, -1.0373, 6.0478



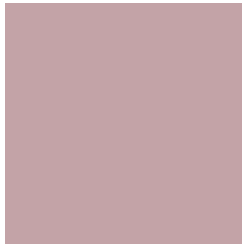
50.4190, -14.9966, 96.9795



10.3230, -3.1172, 19.8877

Previews

White Background



This preview shows how the YUV color 173.0240, -2.9698, 19.2730 looks on a white background.

Color Contrast Check

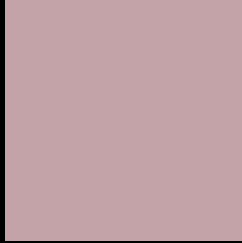
Large Text (above 18pt) WCAG AA × Fail

Any Text WCAG AA × Fail

Large Text (above 18pt) WCAG AAA × Fail

Any Text WCAG AAA × Fail

Black Background



This preview shows how the YUV color 173.0240, -2.9698, 19.2730 looks on a black background.

Color Contrast Check

Large Text (above 18pt) WCAG AA ✓ Pass

Any Text WCAG AA ✓ Pass

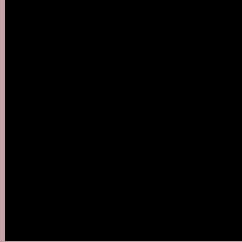
Large Text (above 18pt) WCAG AAA ✓ Pass

Any Text WCAG AAA ✓ Pass

If you want to check with other color combinations, try the [Color Contrast Checker](#).

YUV 173.0240, -2.9698, 19.2730

Background



This preview shows how black text looks on a background with the YUV color 173.0240, -2.9698, 19.2730.



This preview shows how white text looks on a background with the YUV color 173.0240, -2.9698,

Color Blindness Simulation

Color vision deficiency is a very complex topic, and I could not describe the different causes any better than Wikipedia does, so if you want to learn more, you should check out their [article about color blindness](#).

Dichromacy



Original Color

173.0240, -2.9698, 19.2730

Protanopia

171.3100, -0.1528, 2.3591

Deuteranopia

172.4040, -2.6642, 14.5547



Tritanopia

173.5340, 0.2297, 19.7027

Trichromacy



Original Color

173.0240, -2.9698, 19.2730

Protanomaly

171.8270, -0.9007, 8.9217

Deuteranomaly

172.4150, -2.6696, 16.2990

Tritanomaly

173.1920, -1.0807, 20.0026

Monochromacy



Original Color

173.0240, -2.9698, 19.2730

Achromatopsia

173.0000, 0.0000, 0.0000

Achromatomaly

172.8160, -0.8953, 7.1774

CSS Examples

Text

The CSS property to change the color of the text to YUV 173.0240, -2.9698, 19.2730 is called "color". The color property can be set on classes, ids or directly on the HTML element.

This example shows how text in the color `rgb(195, 163, 167)` looks like.

```
.text, #text, p{  
    color:rgb(195, 163, 167)  
}
```

If you want to add a text shadow in that color use the text-shadow property, you can generate a text shadow directly with our [CSS Text Shadow Generator](#).

Here you see how black text with a 4 pixel rgb(195, 163, 167) colored shadow looks like.

```
.shadow{ text-shadow: 4px 4px 2px rgb(195, 163, 167) }
```

Border

The CSS property to change the border of an element to YUV 173.0240, -2.9698, 19.2730 is called "border". The border property can be set on classes, ids or directly on the HTML element.

This example shows the color as border, it can be applied via the CSS property "border" or "border-color".

```
.border, #border, table{ border:4px solid rgb(195, 163, 167) }
```


If only the border color should be changed use the property `border-color`.

```
.border{ border-color:rgb(195, 163, 167) }
```

If you want to add a box shadow in that color use:

Here you see how a box with a 4 pixel `rgb(195, 163, 167)` colored shadow looks like.

```
.boxshadow{ -moz-box-shadow:4px 4px 4px  
4px rgb(195, 163, 167); -webkit-box-  
shadow:4px 4px 4px 4px rgb(195, 163, 167);  
box-shadow:4px 4px 4px 4px rgb(195, 163,  
167) }
```

Background

The CSS property to change the background color of an element to YUV 173.0240, -2.9698, 19.2730 is called "background". The background property can be set on classes, ids or directly on the HTML element.

```
.background, #background, body{  
background: rgb(195, 163, 167) }
```

If only the background color should be changed can be used:

```
.background{ background-color: rgb(195,  
163, 167) }
```

This example shows the color as background, it is applied via the CSS property "background".

To optimize and compress your CSS code, you can use our [online CSS compressor and optimizer](#) based on csstidy. If you want to create a linear or radial gradient as background or border, check our [CSS Gradient Generator](#).

Hey! You found this booklet interesting? Support Converting Colors with the new Membership Option!

The pro membership hides all ads, plus gives you double the colors in the color bucket, and more awesome pro features!

[Learn more, Memberships starting at \\$2.50/m!](#)

**Follow me
on Twitter!**

@ConvertingColor