

Converting Colors

YUV(173.0290, -6.9163,
71.8886)

Have a look what the booklet for
YUV(173.0290, -6.9163, 71.8886)
contains.

YUV(173.0290, -6.9163, 71.8886)	3
<i>Conversions</i>	4
<i>Details</i>	6
<i>Harmonies</i>	12
<i>Previews</i>	24
<i>Color Blindness Simulation</i>	28
<i>CSS Examples</i>	31

Color

**YUV(173.0290, -6.9163,
71.8886)**

Conversions

Conversions Part 1

Format	Color
Hex	FF869F
RGB	255, 134, 159
RGB Percent	100%, 53%, 62%
CMY	0.0000, 0.4745, 0.3765
CMYK	0.00, 0.47, 0.38, 0.00
HSL	348°, 100%, 76%
HSV	348°, 47%, 100%
XYZ	56.0231, 40.8134, 37.7259
YIQ	173.0290, 64.0910, 33.4270

Conversions

Conversions Part 2

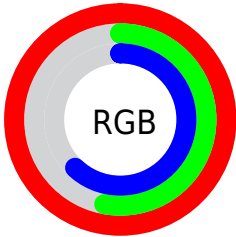
Format	Color
R_{YB}	255, 134, 159
Decimal	16746143
CIE _{Lab}	70.04, 48.34, 7.88
CIE _{LCh}	70, 48.979, 9.260
Yxy	40.8134, 0.4163, 0.3033
Android (android.graphics.Color)	4294936223 (0xFFFF869F)
YUV	173.0290, -6.9163, 71.8886
Hunter-Lab	63.8854, 44.7329, 9.7075

Details

The YUV color **173.0290, -6.9163, 71.8886** is a light color, and the websafe version is hex **FF9999**. A complement of this color would be **215.9710, 6.9163, -71.8886**, and the grayscale version is **173.0000, 0.0000, 0.0000**.

A 20% lighter version of the original color is **212.1710, 0.9017, 37.5610**, and **117.5770, -4.7215, 67.9000** is the 20% darker color. If you saturate the color by 10%, you get **156.0740, -8.4175, 86.7581**, and if you desaturate by 10%, it is **190.5710, -5.7045, 56.5042**.

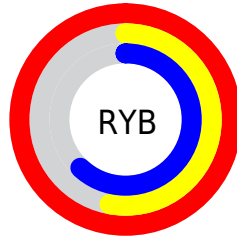
Distribution



Red (100%)

Green (53%)

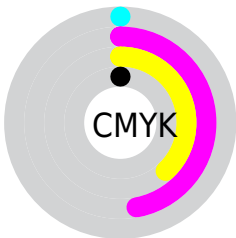
Blue (62%)



Red (100%)

Yellow (53%)

Blue (62%)

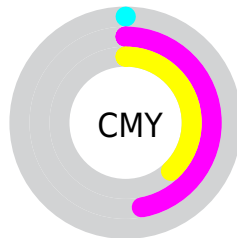


Cyan (0%)

Magenta (47%)

Yellow (38%)

Black (0%)



Cyan (0%)

Magenta (47%)

Yellow (38%)

Brightness & Saturation Gradients

These gradients show how the YUV color 173.0290, -6.9163, 71.8886 changes by changing the brightness by 10 percent. The first figure shows a shift by +10% for each color and the second figure -10%.

Similar to the brightness gradients but the following saturation gradients show a change of the YUV color 173.0290, -6.9163, 71.8886 by changing the saturation by 10% instead.

173.0290, -6.9163,
71.8886

173.0290, -6.9163,
71.8886

255.0000, 0.0000,
0.0000

145.2460, -6.0373,
69.9443

212.1710, 0.9017,
37.5610

117.5770, -4.7215,
67.9000

231.7990, 5.0291,
20.3473

90.3210, -3.1163,
66.3705

250.3040, 2.3151,
4.1184

61.4180, -0.2061,
66.2854

36.7380, 1.1152,
62.4968

26.3850, -3.6408,
47.8974

16.9720, -7.3812,

34.2276

■ 4.1860, -2.0637,
8.6069

■ 0.0000, 0.0000,
0.0000

■ 173.0290, -6.9163,
71.8886

■ 173.0290, -6.9163,
71.8886

■ 156.0740, -8.4175,
86.7581

■ 190.5710, -5.7045,
56.5042

■ 138.5320, -9.6293,
102.1424

■ 207.5260, -4.2033,
41.6347

■ 121.4630,
-11.5673, 117.1119

■ 225.1820, -2.5547,
26.1504

■ 103.9210,
-12.7791, 132.4963

■ 242.1370, -1.0535,
11.2809

■ 86.9660, -14.2802, 255.0000, 0.0000,
147.3658 0.0000

■ 82.2870, -14.4385,
151.4693

Harmonies

Analogous

The Analogous color harmony consists of three colors that are next to each other on the color wheel.



175.7120, 13.9460, 53.7496



173.0290, -6.9163, 71.8886



171.1430, -26.6925, 68.2806

Triad

The Triadic color harmony groups three colors that are evenly spaced from another and form a triangle on the color wheel.



173.0290, -6.9163, 71.8886



160.9580, -30.0523, -21.0112



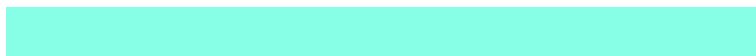
136.9640, 57.6987, -120.1174

Complementary

The Complementary color scheme is a pair of colors which are on the opposite of each other on the color wheel.



173.0290, -6.9163, 71.8886



215.9710, 6.9163, -71.8886

Split Complementary

Split-complementary colors differ from the complementary color scheme. The scheme consists of three colors, the original color and two neighbors of the complement color.



138.4680, 43.1533, -121.4364



173.0290, -6.9163, 71.8886



150.2630, -6.0457, -67.7597

Square

The Square scheme is like the rectangle color scheme, but the four colors are evenly spaced on the color wheel.



173.0290, -6.9163, 71.8886



165.9860, -42.3911, 16.6753



134.8540, 24.2290, -118.2670



165.9250, 43.9140, -38.5222

Rectangle

The Rectangle color scheme consists of four colors that form a rectangle on the color wheel.



173.0290, -6.9163, 71.8886



170.0200, -36.9849, 56.1105



134.8540, 24.2290, -118.2670



137.9270, 53.7730, -120.9620

Sweetspot

The Sweet Spot groups the original color and five complimentary colors.



173.0290, -6.9163, 71.8886



230.6760, -1.8123, 21.3321



176.1990, 38.8489, 46.3065



113.0340, -1.4958, 13.1252



0.0000, 0.0000, 0.0000



128.0000, 0.0000, 0.0000

Same Dimension

The Same Dimension uses a secret algorithm to generate beautiful new colors.



173.0290, -6.9163, 71.8886



156.7750, -8.2701, 86.1433



190.1370, -27.6755, 56.8849



119.1150, -1.0427, 7.7921



61.6690, -10.6828, 113.4233



20.6180, -3.7557, 38.0460

Inverse Universe

The Inverse Universe completely reimagines the original color for something new.



173.0290, -6.9163, 71.8886



156.7750, -8.2701, 86.1433



198.8630, 27.6755, -56.8849



119.1150, -1.0427, 7.7921



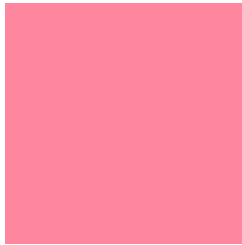
61.6690, -10.6828, 113.4233



20.6180, -3.7557, 38.0460

Previews

White Background



This preview shows how the YUV color 173.0290, -6.9163, 71.8886 looks on a white background.

Color Contrast Check

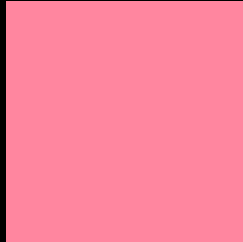
Large Text (above 18pt) WCAG AA × Fail

Any Text WCAG AA × Fail

Large Text (above 18pt) WCAG AAA × Fail

Any Text WCAG AAA × Fail

Black Background



This preview shows how the YUV color 173.0290, -6.9163, 71.8886 looks on a black background.

Color Contrast Check

Large Text (above 18pt) WCAG AA ✓ Pass

Any Text WCAG AA ✓ Pass

Large Text (above 18pt) WCAG AAA ✓ Pass

Any Text WCAG AAA ✓ Pass

If you want to check with other color combinations, try the [Color Contrast Checker](#).

YUV 173.0290, -6.9163, 71.8886

Background



This preview shows how black text looks on a background with the YUV color 173.0290, -6.9163, 71.8886.



This preview shows how white text looks on a background with the YUV color 173.0290, -6.9163,

71.8886.

Color Blindness Simulation

Color vision deficiency is a very complex topic, and I could not describe the different causes any better than Wikipedia does, so if you want to learn more, you should check out their [article about color blindness](#).

Dichromacy



Original Color

173.0290, -6.9163, 71.8886

Protanopia

172.3250, 3.7838, -0.2850

Deuteranopia

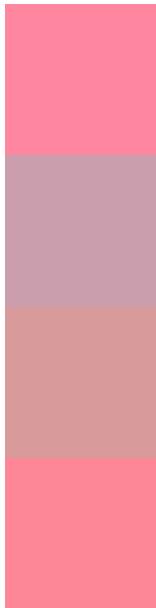
172.7160, -9.2270, 19.5431



Tritanopia

172.4220, -13.0260, 71.5439

Trichromacy



Original Color

173.0290, -6.9163, 71.8886

Protanomaly

172.7520, -0.3707, 25.6505

Deuteranomaly

173.0650, -8.4130, 38.5310

Tritanomaly

172.4050, -10.5527, 71.5588

Monochromacy



Original Color

173.0290, -6.9163, 71.8886

Achromatopsia

173.0000, 0.0000, 0.0000

Achromatomaly

173.1820, -2.5547, 26.1504

CSS Examples

Text

The CSS property to change the color of the text to YUV 173.0290, -6.9163, 71.8886 is called "color". The color property can be set on classes, ids or directly on the HTML element.

This example shows how text in the color `rgb(255, 134, 159)` looks like.

```
.text, #text, p{  
    color:rgb(255, 134, 159)  
}
```

If you want to add a text shadow in that color use the text-shadow property, you can generate a text shadow directly with our [CSS Text Shadow Generator](#).

Here you see how black text with a 4 pixel rgb(255, 134, 159) colored shadow looks like.

```
.shadow{ text-shadow: 4px 4px 2px rgb(255, 134, 159) }
```

Border

The CSS property to change the border of an element to YUV 173.0290, -6.9163, 71.8886 is called "border". The border property can be set on classes, ids or directly on the HTML element.

This example shows the color as border, it can be applied via the CSS property "border" or "border-color".

```
.border, #border, table{ border:4px solid rgb(255, 134, 159) }
```


If only the border color should be changed use the property `border-color`.

```
.border{ border-color:rgb(255, 134, 159) }
```

If you want to add a box shadow in that color use:

Here you see how a box with a 4 pixel `rgb(255, 134, 159)` colored shadow looks like.

```
.boxshadow{ -moz-box-shadow:4px 4px 4px  
4px rgb(255, 134, 159); -webkit-box-  
shadow:4px 4px 4px 4px rgb(255, 134, 159);  
box-shadow:4px 4px 4px 4px rgb(255, 134,  
159) }
```

Background

The CSS property to change the background color of an element to YUV 173.0290, -6.9163, 71.8886 is called "background". The background property can be set on classes, ids or directly on the HTML element.

```
.background, #background, body{  
background: rgb(255, 134, 159) }
```

If only the background color should be changed can be used:

```
.background{ background-color: rgb(255,  
134, 159) }
```

This example shows the color as background, it is applied via the CSS property "background".

To optimize and compress your CSS code, you can use our [online CSS compressor and optimizer](#) based on csstidy. If you want to create a linear or radial gradient as background or border, check our [CSS Gradient Generator](#).

Hey! You found this booklet interesting? Support Converting Colors with the new Membership Option!

The pro membership hides all ads, plus gives you double the colors in the color bucket, and more awesome pro features!

[Learn more, Memberships starting at \\$2.50/m!](#)

**Follow me
on Twitter!**

@ConvertingColor