

Converting Colors

YUV(173.6710, -17.5858,
40.6305)

Have a look what the booklet for
YUV(173.6710, -17.5858, 40.6305)
contains.

YUV(173.6710, -17.5858, 40.6305)	3
<i>Conversions</i>	4
<i>Details</i>	6
<i>Harmonies</i>	12
<i>Previews</i>	24
<i>Color Blindness Simulation</i>	28
<i>CSS Examples</i>	31

Color

**YUV(173.6710, -17.5858,
40.6305)**

Conversions

Conversions Part 1

Format	Color
Hex	DC9D8A
RGB	220, 157, 138
RGB Percent	86%, 62%, 54%
CMY	0.1373, 0.3843, 0.4588
CMYK	0.00, 0.29, 0.37, 0.14
HSL	14°, 54%, 70%
HSV	14°, 37%, 86%
XYZ	46.1596, 41.1646, 29.5574
YIQ	173.6710, 43.6470, 7.4470

Conversions

Conversions Part 2

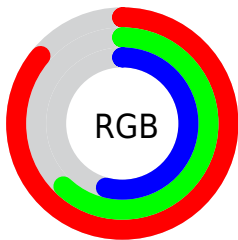
Format	Color
R _Y B	220, 163, 138
Decimal	14458250
CIE Lab	70.29, 21.07, 19.28
CIE LCh	70, 28.561, 42.455
Yxy	41.1646, 0.3949, 0.3522
Android (android.graphics.Color)	4292648330 (0xFFDC9D8A)
YUV	173.6710, -17.5858, 40.6305
Hunter-Lab	64.1596, 16.1424, 17.5977

Details

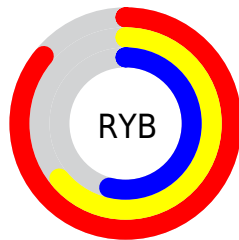
The YUV color $173.6710, -17.5858, 40.6305$ is a light color, and the websafe version is hex $CC9999$. A complement of this color would be $184.3290, 17.5858, -40.6305$, and the grayscale version is $174.0000, 0.0000, 0.0000$.

A 20% lighter version of the original color is $222.4630, -15.5113, 28.5349$, and $120.4040, -15.9752, 37.3567$ is the 20% darker color. If you saturate the color by 10%, you get $161.1840, -22.2757, 51.5816$, and if you desaturate by 10%, it is $186.1580, -12.8959, 29.6794$.

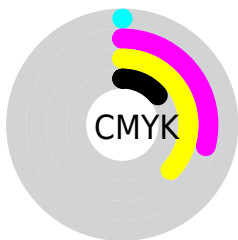
Distribution



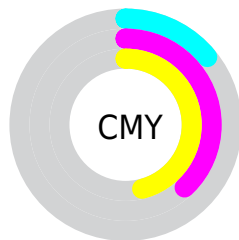
- Red (86%)
- Green (62%)
- Blue (54%)



- Red (86%)
- Yellow (64%)
- Blue (54%)



- Cyan (0%)
- Magenta (29%)
- Yellow (37%)
- Black (14%)



- Cyan (14%)
- Magenta (38%)
- Yellow (46%)

Brightness & Saturation Gradients

These gradients show how the YUV color 173.6710, -17.5858, 40.6305 changes by changing the brightness by 10 percent. The first figure shows a shift by +10% for each color and the second figure -10%.

Similar to the brightness gradients but the following saturation gradients show a change of the YUV color 173.6710, -17.5858, 40.6305 by changing the saturation by 10% instead.

■ 173.6710,
-17.5858, 40.6305

■ 173.6710,
-17.5858, 40.6305

■ 255.0000, 0.0000,
0.0000

■ 146.8880,
-16.7068, 38.6862

■ 222.4630,
-15.5113, 28.5349

■ 120.4040,
-15.9752, 37.3567

■ 242.0910,
-11.3839, 11.3212

■ 95.6210, -15.0962,
35.4124

■ 254.2020, -3.0576,
0.6998

■ 70.8380, -14.2171,
33.4681

■ 47.5710, -12.6065,
30.1942

■ 24.9730, -12.3117,
28.9647

■ 10.5790, -4.7224,

21.4172

0.0000, 0.0000,
0.0000

173.6710,
-17.5858, 40.6305

173.6710,
-17.5858, 40.6305

161.1840,
-22.2757, 51.5816

186.1580,
-12.8959, 29.6794

148.6970,
-26.9656, 62.5327

198.6450, -8.2060,
18.7283

136.2100,
-31.6555, 73.4838

211.1320, -3.5161,
7.7772

123.7230,
-36.3454, 84.4349

223.6190, 1.1738,
-3.1739

111.2360,
-41.0353, 95.3860

236.1060, 5.8637,
-14.1250

■ 99.3360, -46.0146,
105.8223

■ 244.5350, 5.1592,
-21.5172

■ 95.7170, -47.1885,
108.9962

Harmonies

Analogous

The Analogous color harmony consists of three colors that are next to each other on the color wheel.



175.2550, -6.5347, 42.7494



173.6710, -17.5858, 40.6305



171.8730, -24.0944, 28.1754

Triad

The Triadic color harmony groups three colors that are evenly spaced from another and form a triangle on the color wheel.



173.6710, -17.5858, 40.6305



162.4440, -3.6699, -36.3464



171.7310, 24.7826, -15.5501

Complementary

The Complementary color scheme is a pair of colors which are on the opposite of each other on the color wheel.



173.6710, -17.5858, 40.6305



184.3290, 17.5858, -40.6305

Split Complementary

Split-complementary colors differ from the complementary color scheme. The scheme consists of three colors, the original color and two neighbors of the complement color.



165.2500, 27.4847, -42.3152



173.6710, -17.5858, 40.6305



158.9330, 11.3720, -54.3152

Square

The Square scheme is like the rectangle color scheme, but the four colors are evenly spaced on the color wheel.



173.6710, -17.5858, 40.6305



166.2590, -16.3967, -14.2591



159.2990, 23.0236, -58.1442



174.9580, 17.2757, 12.3148

Rectangle

The Rectangle color scheme consists of four colors that form a rectangle on the color wheel.



173.6710, -17.5858, 40.6305



170.2690, -24.7826, 15.5501



159.2990, 23.0236, -58.1442



170.0180, 26.1201, -24.5718

Sweetspot

The Sweet Spot groups the original color and five complimentary colors.



173.6710, -17.5858, 40.6305



238.8940, -5.8637, 14.1250



169.8140, 15.8677, 44.0131



118.4310, -3.6635, 8.3920



0.0000, 0.0000, 0.0000



128.0000, 0.0000, 0.0000

Same Dimension

The Same Dimension uses a secret algorithm to generate beautiful new colors.



173.6710, -17.5858, 40.6305



190.2340, -24.7654, 56.7998



197.1510, -29.1614, 20.0386



103.4630, -2.2003, 5.7329



75.2070, -37.0771, 85.7645



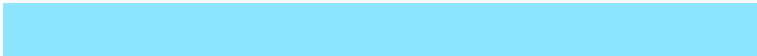
20.2110, -9.9640, 22.6170

Inverse Universe

The Inverse Universe completely reimagines the original color for something new.



184.3290, 17.5858, -40.6305



204.7660, 24.7654, -56.7998



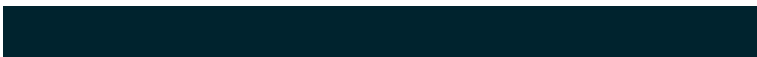
160.8490, 29.1614, -20.0386



104.9500, 2.4896, -5.2182



97.7930, 37.0771, -85.7645



25.7890, 9.9640, -22.6170

Previews

White Background



This preview shows how the YUV color 173.6710, -17.5858, 40.6305 looks on a white background.

Color Contrast Check

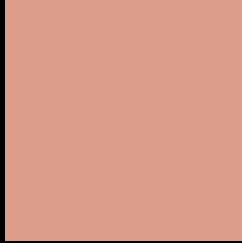
Large Text (above 18pt) WCAG AA × Fail

Any Text WCAG AA × Fail

Large Text (above 18pt) WCAG AAA × Fail

Any Text WCAG AAA × Fail

Black Background



This preview shows how the YUV color 173.6710, -17.5858, 40.6305 looks on a black background.

Color Contrast Check

Large Text (above 18pt) WCAG AA ✓ Pass

Any Text WCAG AA ✓ Pass

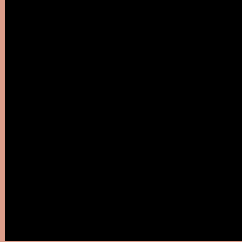
Large Text (above 18pt) WCAG AAA ✓ Pass

Any Text WCAG AAA ✓ Pass

If you want to check with other color combinations, try the [Color Contrast Checker](#).

YUV 173.6710, -17.5858, 40.6305

Background



This preview shows how black text looks on a background with the YUV color 173.6710, -17.5858, 40.6305.



This preview shows how white text looks on a background with the YUV color 173.6710, -17.5858,

Color Blindness Simulation

Color vision deficiency is a very complex topic, and I could not describe the different causes any better than Wikipedia does, so if you want to learn more, you should check out their [article about color blindness](#).

Dichromacy



Original Color

173.6710, -17.5858, 40.6305

Protanopia

171.6130, -13.1202, 8.2324

Deuteranopia

172.4580, -17.9738, 25.0313



Tritanopia

175.2980, -5.0769, 41.8347

Trichromacy



Original Color

173.6710, -17.5858, 40.6305

Protanomaly

172.5220, -15.0473, 19.7132

Deuteranomaly

172.9040, -17.7007, 30.7792

Tritanomaly

174.4460, -9.5869, 41.7049

Monochromacy



Original Color

173.6710, -17.5858, 40.6305

Achromatopsia

174.0000, 0.0000, 0.0000

Achromatomaly

174.0790, -6.4479, 14.8397

CSS Examples

Text

The CSS property to change the color of the text to YUV 173.6710, -17.5858, 40.6305 is called "color". The color property can be set on classes, ids or directly on the HTML element.

This example shows how text in the color `rgb(220, 157, 138)` looks like.

```
.text, #text, p{  
    color:rgb(220, 157, 138)  
}
```

If you want to add a text shadow in that color use the text-shadow property, you can generate a text shadow directly with our [CSS Text Shadow Generator](#).

Here you see how black text with a 4 pixel rgb(220, 157, 138) colored shadow looks like.

```
.shadow{ text-shadow: 4px 4px 2px rgb(220, 157, 138) }
```

Border

The CSS property to change the border of an element to YUV 173.6710, -17.5858, 40.6305 is called "border".

The border property can be set on classes, ids or directly on the HTML element.

This example shows the color as border, it can be applied via the CSS property "border" or "border-color".

```
.border, #border, table{ border:4px solid rgb(220, 157, 138) }
```


If only the border color should be changed use the property `border-color`.

```
.border{ border-color:rgb(220, 157, 138) }
```

If you want to add a box shadow in that color use:

Here you see how a box with a 4 pixel `rgb(220, 157, 138)` colored shadow looks like.

```
.boxshadow{ -moz-box-shadow:4px 4px 4px  
4px rgb(220, 157, 138); -webkit-box-  
shadow:4px 4px 4px 4px rgb(220, 157, 138);  
box-shadow:4px 4px 4px 4px rgb(220, 157,  
138) }
```

Background

The CSS property to change the background color of an element to YUV 173.6710, -17.5858, 40.6305 is called "background". The background property can be set on classes, ids or directly on the HTML element.

```
.background, #background, body{  
background: rgb(220, 157, 138) }
```

If only the background color should be changed can be used:

```
.background{ background-color: rgb(220,  
157, 138) }
```

This example shows the color as background, it is applied via the CSS property "background".

To optimize and compress your CSS code, you can use our [online CSS compressor and optimizer](#) based on csstidy. If you want to create a linear or radial gradient as background or border, check our [CSS Gradient Generator](#).

Hey! You found this booklet interesting? Support Converting Colors with the new Membership Option!

The pro membership hides all ads, plus gives you double the colors in the color bucket, and more awesome pro features!

[Learn more, Memberships starting at \\$2.50/m!](#)

**Follow me
on Twitter!**

@ConvertingColor